

Frederick Livestock Sales

Frederick, Md.

Monday, Feb. 22, 1988

Report Supplied by Auction

BUTCHER COWS STEADY WITH LAST WEEK GOOD 49 00-52 00, STANDARD & UTILITY 44 00-48 00, CANNERS 40 00-43 00, SHELLY 39.00 DOWN BULLS- GOOD 54.00-54.75; STEERS- SELECT 58 00-59 50; STANDARD 53 00-57 00, HEIFERS- 50 CENTS LOWER GOOD 51.00-53 00, MEDIUM 48 00-49 50, BUTCHER HOGS- 240-260 LBS 43 50-44 00, 270-335 LBS. 41.00-43.00 SOWS- 300-600 LBS 34 50-38.50,

HEAVY BOARS- 550-690 LB 28 00-28 75, VEAL CALVES- MOSTLY STEADY PRICES GOOD-CHOICE 95 00-101.00; STANDARD 90.00-94 00, STOCKY & THIN 85 00-90 00, LIGHT CALVES 88 00 96 00, WEAK & ROUGH 87 00-DOWN

CALVES RETURNING TO FARM- DEMAND WEAKER 5 00-12 00 LOWER.

HOLSTEIN HEIFERS- 90-120 LBS 102 00-117.00.

HOLSTEIN BULLS- 90-100 LBS 105 00-135 00; 105-115 LBS 121 00-139 00

LAMBS- GOOD 76 00-78 00, GOATS LARGE 60 00-70 00, MEDIUM 35 00-52 00

STOCK CATTLE- LIGHT RUN- STEADY PRICES. STEERS- MED TO GOOD 700-800 LBS. 58.00-59 50, HEIFERS- CHOICE 75 00-80 00 G SPRINGING HEIFERS & FRESH HEIFERS- 750 00-850.00.

PIGS & SHOATS- STEADY PRICES BY THE HEAD- 25-30 LBS 24 00-25 00; BY THE LB - STOCK BOAR 195 LBS AT 34 00

Eighty-Four Livestock Auction
Eighty-Four, Pa.

Mon., February 22, 1988

CATTLE 282 .PDA .Couple High Choice sl. steers 71 50 & 74.25, Choice 67-70 50, few Select 60-64 50, few Standard 56 00-60, Utility 49 00-54 00 Select sl heifers 58 50-61, few Standard 55 00-58, Utility 47-52 00 Breaking Utility & Commercial sl. cows 48 00-51, Cutter &

Bon. Utility 45.00-49, Canner & Low Cutter 40-45 50, Shells down to 27 00 Yield Grade No 1, 1300/2185 lbs sl bulls 55 00-63, few No 2, 1200/2000 lbs 49 00-52 00 Feeder Cattle- Medium & Large Frame No. 1, 400/500 lbs steers 75 00-90, few 300 lbs up to 101 00, few 600/800 lbs 72 00-83 00. Medium & Large Frame No 1, 400/575 lbs. heifers 74.00-88 50, 500/600 lbs. 65 00-75.00 Medium Frame No. 1, 300/500 lbs. bulls 79 00-92, few Large #2, 680 lbs. at 55 00

CALVES 208 Few Choice vealers 110 00-118, few Good 100 00-106, Standard and Good 90/120 lbs 80 00-97, 60/85 lbs 70 00-84, few Utility 50/80 lbs 45 00-64 00. Farm Calves Holstein bulls 90/120 lbs 110 00-115 50; few Beef cross bulls & heifers 85/130 lbs 85.00-130 00

HOGS 139 One Lot US No 1-2 245 lbs. barrows and gilts 45.50, 1-3 210/250 lbs 43 50-44 50, lot 2-3 206 lbs 43 00, lot 1-3 198 lbs. 40.00 US No 1-3 350/580 lbs sows 38 00-41 00, 2-3 350/650 lbs 32 00-36 00 Few Boars 26 00-28 00

FEEDER PIGS 9 Few US No 1-3 45/58 lbs feeder pigs 37 00 40 00 -- all per head

SHEEP 41 Few Choice 55/65 lbs new crop lambs 90 00-91, few Good 60/65 lbs feeder lambs 75 00-78 00 Slaughter sheep 20 00-26 00

GOATS 8 .Few Large 48 00-58 00, few Medium 21 00-34 00 --- all per head

COMMON VEAL 70 00-93 00. CHOICE STEERS 66 00-71 50. SELECT STEERS 60.00-67 00. COMMON STEERS 53 00-59.00. COMMERCIAL COWS 47.00-53 00 CANNERS-CUTTERS 43 00-48 00. SHELLS 38.00-42.00. CHOICE HEIFERS 62 00-66 00 SELECT HEIFERS 58 00-61 00. COMMON HEIFERS 50 00-57 00 GOOD FEEDERS 80 00-94.00. COMMON FEEDERS 40 00-79.00. BULLS 53 00-63.50. GOOD HOGS 43 00-45 10 SOWS 30 00-32 75 ROUGHS 26 00-28 50

North Jersey Livestock

Hackettstown, NJ

Tues., Feb. 23, 1988

Report supplied by auction

CALVES .31-1.47% COWS .39% -.53. EASY COWS .20-.49% . HEIFERS .46% -.56% BULLS .42% -.65% STEERS 49-.61% . HOGS .28-.39. ROASTING PIGS, EACH 12 00-26 00 BOARS 33 00-37 00 SOWS 26-31, SHEEP 09-90. LAMBS, EACH 10 00-81 00 LAMBS, PER LB. 35-1.35. GOATS, EACH 28 00-82 00 KIDS, EACH 8.00-52 00. HIDES, EACH 45 00 EA. TOTAL 1115 LDS

Peoria Cattle

Peoria, Ill.

Tues., February 23, 1988

SHEEP. 75 TRADING MODERATE COMPARED WITH LAST TUESDAY SLAUGHTER LAMBS MOSTLY 2 00 TO 4 00 LOWER, EXCEPT PACKAGE OF FALL LAMBS 2.00 HIGHER. NOT ENOUGH SLAUGHTER EWES FOR A MARKET TEST.

SHORN SLAUGHTER LAMBS WITH #1 & 2 PELTS- CHOICE 100-125 LBS 78 00-80 00

WOOLED SLAUGHTER LAMBS (INCLUDES SOME FALL LAMBS) CHOICE 95-125 LBS 78 00-82 00.

Paradise Tobacco Auction

Paradise, Pa.

Week of Feb. 22, 1988

Report Supplied by Auction GOOD MIDDLES- .95-1 10, MOSTLY 1 00

GOOD TIPS 90-100 GOOD BOTTOMS 40- 81 OUT-GRADES- 05- 35. TOTAL POUNDS SOLD 248,868

Jersey Shore Livestock Market, Inc.

Auction every Thursday

at 4:00 p.m.

Jersey Shore, Pa.

Report supplied by Auction

Thursday, Feb. 25, 1988

RLIURN TO FARM CALVES

100 00-160 00

GOOD VEAL 95 00-110 00

BAGGED PEANUT HULLS

At \$68/Ton Delivered*

LESTER SMUCKER
215-445-6019

* Cash and quantity discount included Delivery within 30 miles of New Holland



ATTENTION FARMERS

The New Way To Market Your Livestock

HATFIELD MOYER
PACKING CO. AND PACKING CO.

Will Receive Hogs Will Receive Cattle

At The

BLAIR-BEDFORD BUYING STATION

RD 1 Martinsburg, Pa

MONDAYS - Hogs 8 AM to 11:30 AM
Cattle & Calves 8 AM to 3 PM

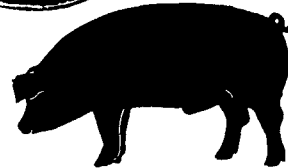
THURSDAYS - Cattle & Calves
8 AM to 3 PM

- No commission or yardage fees deducted from check
- Livestock weighed and paid for immediately
- You may call our office sale day for prices

DALE R. HOOVER - Owner
Business 814-793-3077
Residence 814-793-2657



GWALTNEY of SMITHFIELD, LTD.



RECEIVING HOGS:

LANCASTER COUNTY FARMERS

MONDAYS McCoy's Branch Office, Bareville
WEDNESDAYS (Next to Bawells Butcher Shop)
& **FRIDAYS** on Butler Rd 717-656-9668

TUESDAYS B & R Cattle
THURSDAYS Marietta

717-426-3258

YORK COUNTY FARMERS

MONDAYS Stewartstown
717-993-2564

TUESDAYS Thomasville
717-792-2248 or 9836

Contact for information

Ed Herrmann, 717-284-3203
or Charlie Kauffman, 215-593-5674
Future forward contracts available

MARKET RISK

A Farming Option



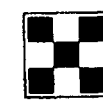
Talk To Us About:

- Earnings - Free Of Market Fluctuations
- Removing Feed Cost Fluctuations - Based On Production Levels
- Boar, Sow, And Pig Ownership In 5 Years
- Replacement Boars And Gilts Provided
- On Farm Computer With Production And Financial Records
- Comprehensive Farm Management And Financial Management Guidance
- Complete Project Management And Guidance

Call: 800-873-5300

Purina Mills, Inc.

Serving The Needs Of Agriculture



* Trade Mark Ralston Purina Co

ATTENTION CATTLE FEEDERS

Load Of 500 To 600 Head Light Calves For Our Friday, March 4th Sale, 11 AM

Walter M. Dunlap and Sons
Lancaster Stockyards Tel. (717) 397-5136
An Old Line Commission Firm Keeping Abreast With The Times