

35 TRUCKS & TRAILERS

13' Stoltzfus Lime Spreader, hyd. driven, hyd lift booms Also has spinners, good cond, \$4,000 301-898-5855 after 8pm

1963 C60 Chevrolet cattle truck, new brakes, good tires, 14' bed, 2-speed rear end, \$800 717-530-1214

1965 12' Stake body truck w/good liftgate, sides on, 36,000 original miles, excellent shape, asking \$1995 215-488-7167

1965 IH Dump truck, 26,000 lb GVW, 345 V8, 5+2 trans, \$3,250, good condition 814-667-2445

1970 Chevy C70, new cab, 2 yr old Eby alum grain & feed body, cross auger & feed blower 717-567-6059

'85 Chevy C10 1/2 ton 4x4, 305 auto, PB, PS, AM-FM, 6,100 GVW, \$7,950 717-733-2873

'85 Chevy C20 1/2 ton pickup, 305 4 spd, PS, PB, AM-FM, 52,000 miles, excellent condition, \$6,950 717-733-2873

'85 Chevy C10, HD 1/2 ton, 305 auto, PB, PS, AM-FM, 6,100 GVW, 2 tone paint, \$6,450. 717-733-2873

'85 Ford F350, dual whl, cab & chassis, 460 4 spd, PS, PB, 10,000 GVW, 60" CA, 31,000 miles, new radials, \$8,600 717-733-2873

'86 Chevy C20, 1/2 ton, 305 auto, PB, PS, AM-FM, 7,200 GVW, new radials, excellent condition, \$7,950 717-733-2873

'86 Ford F150 HD, 1/2 ton, 300 6 cyl, 3 spd overdrive, PS, PB, 6,250 GVW, 11,000 miles, like new, \$7,800 717-733-2873

'87 Chevy C20 HD 1/2 ton, 4x4, 350 Fl, auto, PB, PS, AM-FM, 8,600 GVW, 17,000 miles, like new, \$12,700 717-733-2873

'87 Ford XL E350, 15 passenger club wagon, 351 auto, PB, PS, cruise, tilt, dual air & heat, AM-FM, 17,000 miles, blue & white, like new, \$14,500 717-733-2873

Baughman 12' Spreader Body w/ground wheel drive & Stoltzfus spreader booms. \$800 703-837-1305

74 Int dump truck, 2070A Fleetstar diesel, 29,000 GVW, very good condition, 67 Chev C-50 flatbed, 17,000 GVW, good condition 717-665-6033 between 8 00 and 5 00 Mon thru Fri

'79 F-250 1/2 ton pickup, gross weight 9,000 lbs, 400 engine, auto, PS, PB, running boards, deflector shields, 48,000 miles, new paint, 2 tone green, new tire, excellent condition 717-436-9317

'79 Ford F250, 4WD, runs good but needs work on box, \$2,700 717-942-6119

'68 DM Mack T/A Dump, 237 20 spd, 55 rears, '80 Ford L/N 700, 370 V2, 5 spd, 2 spd, PS, AB, C/C, 24,000 GVW, \$5,500, '81 GMC 6500, 366 5 spd, 2 spd., PS, AB, C/C, 27,000 GVW, \$5,500 215-944-9871 after 6 pm

68 IH C04000, S/A, 238 DD, 5+2, 10 00x20, farm tags, \$1,500, 2000 lb Tuckaway lift gate \$500, platform scales \$85 717-367-0321

72 IH cabover, \$2800 obo 27' Fruehauf Trailer, \$900 obo 65 Chevy Truck, C10, \$1100 717-267-3752

1974 IH Pickup, new engine, rack body, 4WD, \$950 201-439-2430

46 Int. dump truck, runs, dump works, grain body 301-348-5421

YES!! ENGLE FORD DOES MAKE IT EASIER!!

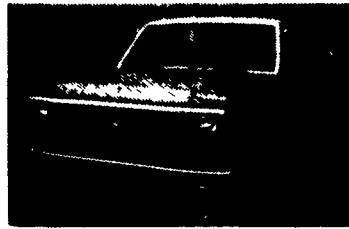
Over 100 New & Used Trucks, Vans & 4x4's

- 88 F350 4WD C/C 7.3 Diesel, 5 Spd. Transmission.
 - 87 Ford F350 Crew Cab, DRW, 4x4, Centurion Conversion
 - 86 Ford F150 Pickup, V8, AOD, PS, PB, AC, XLT Lariat, Loaded, 1 Owner
 - 86 Ford Bronco V8, AT, Low Mileage
 - 86 Ford Bronco II V6, AT, PS, PB, AC, Eddie Bauer, Only 15,000 Miles
 - 84 Ford F150 V8 AT, PS, PB, AC, XLT Pkg. Much, Much More. Low Miles
 - 83 Ford Bronco V8, AT, PS, PB, AC, Custom Stripe, Real Sharp
 - 83 Chev Beauville Van with Air
 - 79 Ford LN 7000 Diesel, 5 Spd, 2 Spd Axle, Cube Body, Heavy Hauler.
 - 78 Ford LN8000, Cab & Chassis, 3208 Dsl, 5 Spd, 2 Spd. Axle, Low Miles
- Large Selection Used 4x4's In Stock

ENGLE FORD, INC.

Rt. 147 North
Millersburg, PA 17061
In PA The Call's On Us 1-800-242-8075
Out of State Call 1-717-692-4841

USED TRUCKS



'83 Ford F-250, Heavy Duty, XLT, 460, Auto, PS, PB, AC, Tilt Wheel, Cruise, Dual Fuel Tank, Rear Sliding Window, 35,000 Miles. \$8,900



'87 Ford F-150 Supercab, 6 cyl, fuel injection, PS, PB, auto, 2 fuel tanks, rear sliding window, under 10,000 miles. \$10,500

MARTIN'S AUTO SALES

725 E. Main St., New Holland, PA 17557
(717) 354-9967



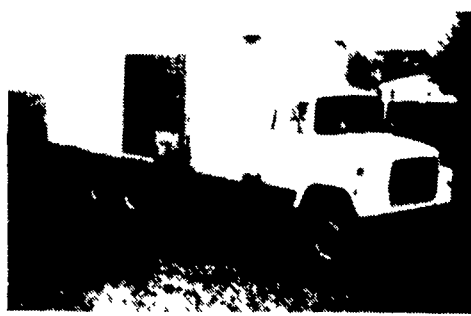
1985 DODGE MAXI CARGO 360, AT, PS, PB, 33,000 Miles, 8,900 GVW Stock #417



1985 FORD E350 ECONOLINE CARGO 300 AT, PS, PB, AC, 52,000 Miles, 9,200 GVW, Stock #368

FOUR WAY AUTO SALES

P.O. Box 444, R.D. #3
New Holland, PA 17557
(717) 354-3199



1979 FORD L8000 Tandem with 22' Van Body, Side Door, 3208 Cat, P.S., 5 Speed w/3 Speed Axle, 10.00-20, 50,000 GVW \$17,500.00

- (1) 1975 FORD F700 Single Axle Dump, 3208 CAT, 5x2 \$9,500.00
- 1975 GMC 7500 S/A Cab & Chassis, 33,000 GVW, \$9,500.00
- 1979 FORD L9000 S/A Cab & Chassis, 33,000 GVW, \$14,500.00
- 1978 IHC 1750 Loadstar S/A Cab & Chassis, \$7,500.00

AS IS SPECIAL: 1980 GMC Tandem Cab & Chassis V-6 Detroit, \$3,000.00



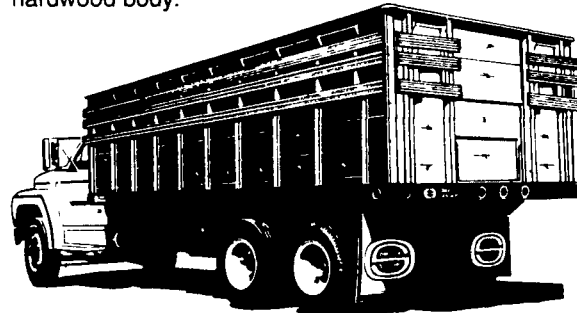
Curry Supply Co.

CURRYVILLE, PENNSYLVANIA 16631
PHONE (814) 793-2829
(814) 793-4481

Grain & Livestock Bodies

Bigger than ever, Better than ever. A full 96" wide...

We've built rugged truck bodies for more than 60 years and today we're continuing that tradition. That's the reason you can't make a better investment than an Omaha Standard steel, stakeless steel, aluminum or hardwood body.



Steel and Hardwood Farm Bodies

- One-piece roll formed steel sides with built-in tarp rail Available in 28", 40" and 52" heights. All with maximum corrugation for maximum strength
- 40", 48" and 54" hardwood sides also available the truck body Omaha Standard built its reputation on
- Maximum legal width of 96" increases payload
- The toughest platform in the business — laminated wood, smooth steel, treadplate or steel over wood
- Easy-conversion fold down stock racks
- Full line of rugged gates. engineered to make your job easier.

Omaha Standard Hoists

Select a job-matched, precision-engineered Omaha Standard hoist for your Omaha Standard body Available in fourteen models — scissor or the stabilized "Olympic" telescopic line Capacities from 5 to 52 tons

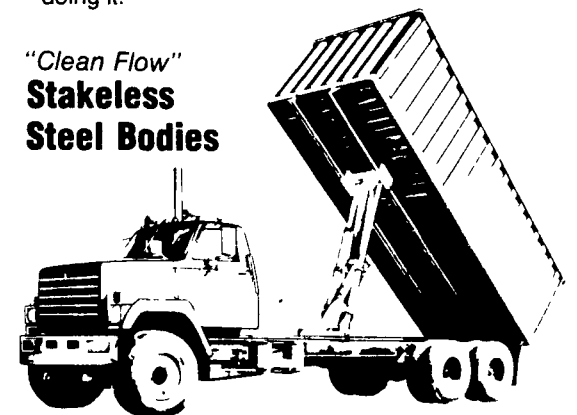


"Clean Flow" Aluminum Bodies

- All-aluminum construction . . . splice-free 60" or 72" high stakeless sides . . . extruded outtrail and tarp rail cap... "I" beam cross sills
- "Clean Flow" design of the extra deep 30° sidewall corrugations allows complete emptying with no sharp corners for grain to hang up
- Standard three-section full opening rear doors and swing-out header
- Greater inside dimensions and light weight give you more hauling capacity and let you save fuel while doing it.

"Clean Flow" Stakeless Steel Bodies

- 52" or 60" heavy gauge sides give you more hauling capacity for grain, sugar beets and other commodities
- "Clean Flow" design of the extra deep 30° sidewall corrugations allows complete emptying with no sharp corners for grain to hang up
- Greater inside width and length make this an ideal body for hauling bagged or palletized products.
- Standard three section full opening rear doors and swing-out header



We've been a part of successful farming and ranching for more than 60 years.

Available at

FARMERSVILLE EQUIPMENT INC.

RD 4, East Farmersville Road, Ephrata, PA 17522
Located in the Village of Farmersville, Lancaster County

717-354-2150

Omaha Standard