

Ida's Notebook

Ida Risser



You have all heard of our need for more landfills because of our "throw-away" society. There is a constant debate as to the need for giant incinerators and their impact on our environment.

One solution might be to use and reuse what we have. I'm probably doing my part by storing my trash at home. There are bags of newspaper clippings and many photos of an Ida Eby family that I'd be glad to give to her relatives.

When I get a big cardboard box, I do not burn it but rather store it in

the basement for later use. When I get a small cardboard box, I store it in the attic and fill it with cookies for Christmas gifts.

I'm using my mother's envelopes that need to have the flaps pried loose as they had become glued fast. And, when a chair needed new armrest covers I did not buy new material, but rather hunted an old skirt with heavy fabric and used it. I have so many clothes in garment bags that fit no one. However, it is a good thing to have when I need a particular color for a rug. Even as I write, an old sweater has become my lap robe.

I can use a toothpick to test more than "one" cake, and the tiny soap scraps are cut into slivers for the

washing machine. Even pot holders get mended rather than replaced with new ones.

Yes, I launder plastic bags and use bread wrappers to store my empty freezer boxes. I did not steal these saving ways but rather I inherited them from a long line of savers.

Now it isn't that I never spend large sums of money. I bought a big car last year, a fur coat a few years ago and even paid several hundred dollars to have my living-room repapered when it was not really necessary.

It seems that I save a nickel here and there so that I can splurge occasionally.

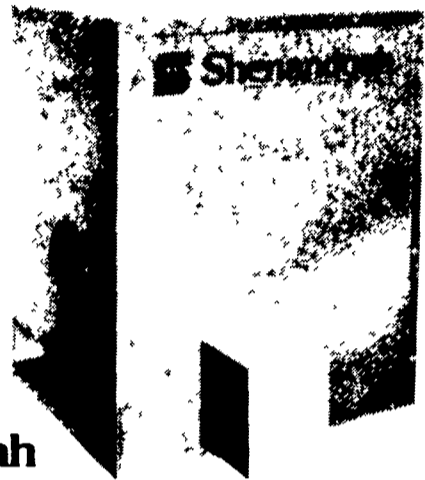
The Shenandoah Space Heater.

Proven Efficiency, Shenandoah Quality.

Shenandoah's new direct gas fired circulating space heater (SSH) has an out put of 170,000 BTUH. One space heater is equivalent to 5 or 6 conventional brooders. Fewer heaters require less thermostat adjustment and maintenance.

The space heater, when suspended the recommended 42" off the floor, will gain increased floor space as well as more even heating and improved visibility.

Shenandoah's space heaters are crafted from durable stainless steel and come factory assembled for ease of installation. The two speed fan with a fully enclosed motor produces 780 cfm of output on high speed. The fan continues to circulate air when on a low speed setting.



COMPLETE SYSTEMS & EQUIPMENT SALES FOR CATTLE, HOGS, & POULTRY



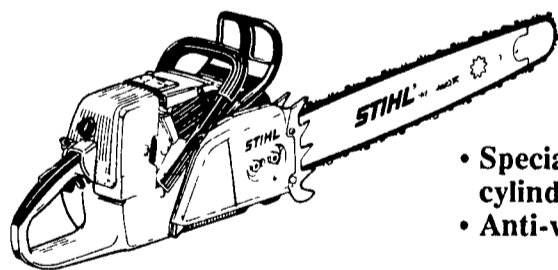
RD 4, East Farmersville Rd., Ephrata, PA 17522
(717) 354-6520

Hours: Mon.-Fri.: 7:30 AM - 4:30 PM

STIHL®

NUMBER ONE WORLDWIDE

**Tough Enough for the Big Jobs
More Features. Less Weight.**



- New, exclusive side-access chain tensioning
- Stihl Quickstop™ Inertia Chain Brake

- Special "long life" chrome impregnated cylinder
- Anti-vibration system

084AVEQ

Adapts 21"-60" Bar
7.44 Cu. In., 19.3 Lbs.

064AVEQ

Adapts 20"-36" Bar
5.19 Cu. In., 14.1 Lbs.

034AVEQ

w/16" Bar,
3.4 Cu. In., 11.5 Lbs.

Call Your Stihl Dealer
Today And Arrange For
A **FREE** Demonstration

BAR & CHAIN OIL

Reg. \$5.79 Gal.

NOW \$3.99 Gal.



A & B SALES & SERVICE
2 Miles South of Rt. 23 Along 772
Thru Monterey - RD 1 Ronke, PA
BOMBERGER'S STORE, INC.
658 W. Newport Rd., Elm, PA
717-685-2407

GAP POWER EQUIPMENT
Corner of Rt. 30 & Rt. 897, Gap, PA
717-442-8970

WALKER MOWER & EQUIPMENT
1523 New Holland Rd., Reading, PA
215-777-5643

HOLLINGER'S LAWN & GARDEN EQUIP.
Ephrata, PA 717-738-1131
Hershey, PA 717-533-4060
Lancaster, PA 717-656-2710

EBLING LAWN & GARDEN SERVICE
688 E. Lincoln Ave.
Myerstown, PA
717-866-6720

BOWERS LAWN & GARDEN
Lyons Rd., Bowers, PA
215-682-7716

SHARTLESVILLE FARM SERVICE
RD 1 Box 1392, Hamburg, PA
215-488-1025

HERR'S REPAIR SHOP
RD 2 Box 115, Palmyra, PA
717-838-1549

MARTIN HARDWARE & EQUIPMENT CO.
Rt. 501, 1/4 Miles South of Schaefferstown, PA
717-949-6817

OXFORD GREENLINE, INC.
1100 Limestone Rd., Oxford, PA
215-932-2753

WES STAUFFER ENGINES & EQUIPMENT
RD 3, Ephrata, PA
717-738-4215

PASSMORE SERVICE CENTER, INC.
RD 1, Rt. 100, Bechtelville, PA
215-367-9084



FEEDTHRU SELFLOCK WITH NORBCO "DROP-PIN" QUICK RELEASE FOR DOWN COWS



FEEDTHRU SELFLOCKS

— FEATURING —

- Down cows immediately released by lifting pin and removing neck bar -no tools required
- Adjustable neck spaces
- Individual animals can be retained when group is released
- Rugged 2" square tubing top and bottom rail
- Steel bearing on pivoting neck bar for long wear
- Cow, heifer, and calf sizes
- Custom lengths available

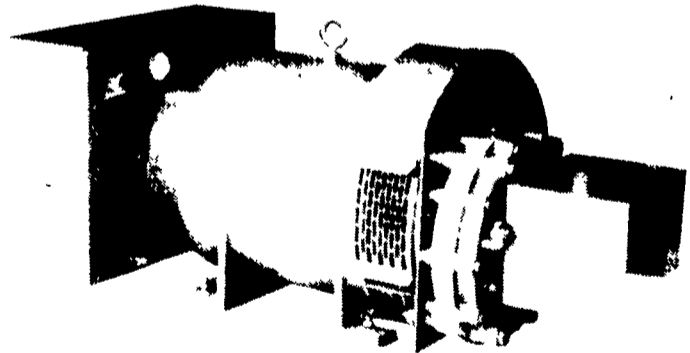
DEALER INQUIRIES INVITED

NORBCO EQUIPMENT

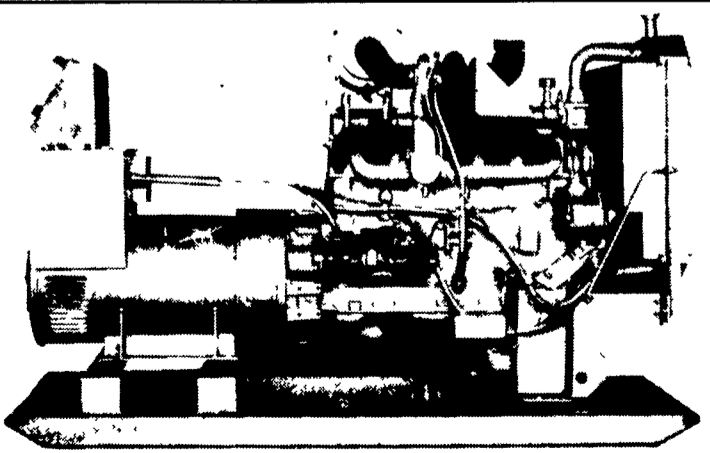
CORNER RT. 233 & SOUTH ST
P O BOX 267, WESTMORELAND, NY 13490

TEL. 315/853-3936

STANDBY GENERATORS



PTO Driven



Automatic Systems

LEONARD MARTIN COMPANY

330 Fonderwhite Rd. Lebanon, PA 17042

24 Hr. Service (717) 273-4544 Radio Dispatch