

Public Auction Register

Closing Date Monday 5 00 P M
of each week's publication

SAT. APR. 2 - 9 30AM
Inventory Reduction Sale,
Farms - Industrial - Lawn &
Garden Tractors & Equip-
ment New & Used Mar-
shall Machinery, Inc., Rt
652, midway between
Indian Orchard & Beach
Lake, RD4, Honesdale, PA
18431 717-729-7117

SAT APR 2 - 10AM
Wheeler, NY, Bath area
Charles Butts Dispersal of
meticulously kept grain
farm machinery Pirrung
Aucts Inc

SAT APR 2 - 10AM Farm
Machinery, Bldg., Pig
Equip, Various small items
Summer Rd 1/2 mi N off of
Rt 202, (Turn by Jesco
Equip) 5 mi East of Fle-
mington, NJ Farm Sold!
William Hultz (Pork Chop
Farm), Owner Col Fred R
Daniel Aucts Inc

MON APR 4 - 8 30AM
Three Tractors, Farm &
Orchard Equipment, Step
Van, Lumber, Tools,
Household Goods, Etc

Located 3 Miles North Of
York Springs On Route #15
To County Line Road Or 8
Miles South Of Dillsburg On
Route #15 To Same County
Line Road Thence Turning
West 1/2 Mile To Sale In
Adams County, Pa (Watch
For Sale Signs) Wolf
Brothers Clair R Slay-
baugh, Auct

THURS APR 7-9AM Anti-
ques, HH, Lawn Mower,
Garden & Carpenter Tools,
etc Rt 74, 5 mis N of York
turn W onto Davidsburg
Rd 1 mi, take Admire Rd
1/4 mi in York Co., PA A
Franklin Lauer, Owner
Clair R Slaybaugh, Auct

FRI APR 8 - Friday
1 30PM State Graded
Feeder Pig Sale Grading
7 30 Until 11 30AM Carl-
isle Livestock Market, Inc
Exit 12 Off I-81 Phone
717-249-4511 Evenings
Jim 249-2359

FRI APR 8 - 7PM Horse
Sale at New Holland Sales
Stables Inc., New Holland,
PA

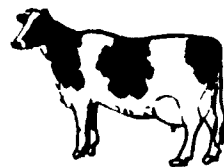
Complete Dairy Dispersal

SATURDAY, MARCH 5, 1988 - 11:30 A.M. SHARP!

Selling at Kling's Dairy Barn, located on route 74, 15 miles North of Carlisle, 2 1/2 miles N.E. of Landisburg, Perry Co., Pa.



"70 REGISTERED HOLSTEINS 70"



50 Milking & Mature Animals; 8 Bred Heifers (several close to calving-balance summer & fall); 8 Breeding-age Heifers; Balance Yearlings & Calves.

DHIA ROLLING HERD AVERAGE - 17,981m 3.60 649f (and going up!) Certified & Accredited - Majority Calftood Vaccinated - Vacc. of Lepto & IBR (All but 2 Animals selling born and raised on the farm)

Herd has not been classified for 3 years; 40 Younger animals never scored. All Mature Animals have been professionally mated for the past 3 years!

Selling 20 Head fresh between December 1 & Sale Date: Several Springing!

Large Group of Young Cows due July, August & September!

Sires of Mature Animals selling include - Tony, Jet Stream, Milestone, Ira, Chairman, Glendell, Mil-Nor, Very, Wilceda, Cavalier, Spirit, Diamond S Chief, Lord, Jemini, Arlinda Cinnamon, Willowvation, Marvex.

Sires of Younger Animals selling include - Ned Boy, Steady, Ira, Hager, Lord, Tony, Valiant Sammy, Melvin, Chief Stewart, Apollo Fawn Honor, Nite Train, Den-K Kirk Boy and More.

Service Sires being used now include - Beautician, Steady, Lekker Royalty, Ned Boy, Cletus, Chairman, Banner, Glenview Joe, Bell Troy.

Some features include -

An 84 pt. Glendell with several records over 20,000m and 800 fat; due May 15 to Steady - 170,000m lifetime & going strong! Her 3 Yr. old Daughter by Chairman (never scored) sells fresh in January - Milking right at 80 lbs. - 2 yr. old record of 15,893m 3.6 578f. A Fancy 2 yr. old Tony from the Glendell - due at sale time.

Also from the same Family - A 3 yr. old Milestone; her dam an 84 pt. Creek daughter of the Glendell - She sells fresh; milking 80 lbs. and bred to Beautician - made 18,522m 563f as a 2 yr. old. Her January '88 Daughter of Carnation Glenview Joe also sells.

A 4 yr. old Chairman from a VG Indian Hills Senator Flame with 2 records of over 16,000m - due Feb. 4 with 3rd calf - Bred to Cassanova; Her daughter by Art-Acres Hager also sells.

AUCTIONEER'S NOTE - This is one of the BEST HERD OF COWS THAT I will have the opportunity to sell this year - GOOD UDDERS - TOP SIRES - GREAT RECORDS!

Sale Managed by-
KLING'S AUCTION SERVICE
Landisburg, PA. Lic. #500
717-789-3883
Dale Hoover, Pedigrees

Owner-
RAY E. WINGERT
2915 Grand Point Rd., Chambersburg, PA
717-264-7630

PUBLIC AUCTION

Friday, February 26, 1988

— 10:00 A.M.

Located in Snyder County, 3 miles west of Selinsgrove, along Pinebrook Road. Follow direction signs off Rt. 522 at the Light Barn, midway between Kreamer and Selinsgrove.

Hi-Grade Holstein Dairy Herd Dispersal

Herd consists of 35 mature milking animals, all in different stages of lactation. 1 bred heifer, 7-15 month old heifers open, 2-6 month old heifers, 7-2 to 3 month old heifer calves. All animals sell AI sired by ABS bulls.

Charts ★ Pregnancy Examined

Modern Farm Machinery

M.F. 165 dsl. w.f. good tire; M.F. 414 3 pt. plow; M.F. 3x16" 3 pt. plow; M.F. 15 portable grinder/mixer; M.F. roto-bar rake; Zimmerman 32 ft. bale elevator; Hesston PT10 9 ft. haybine; N.H. 510 manure spreader; N.H. Super 23 forage blower; 6" blower pipe with neck; Brillion 12 ft. transport harrow; Brillion 12 ft. cultipacker; Little Giant 135 bu. gravity wagon; T.S. 300 gal. pull type field sprayer with PTO pump; J.D. 494A 4 row conventional planter; Vicon 3 pt. fertilizer spreader; 2 row 3 pt. cultivator; 16 ft. flatbed wagon; Grove belt unload forage wagon with Badger tandem axle chassis; 2-Shultz flail choppers; bale wagon with heavy duty wide track chassis; M.F. 50 lb. front mount tractor weights; 175 and 275 gal. fuel tanks with hand pump; 2 wheeled trailer; barn fan; few farm related items.

Approx. 10 ton ear corn, 100 ton corn silage, 7,000 bales alfalfa and mixed hay; 1,000 bales straw.

Milking System

Universal 3 h.p. vacuum pump; 4 Universal vacuum pulsation milking units; approx. 75 ft. 1 1/2 inch glass line; galv. air line; 350 gal. Mojonnier bulk tank; Klensate auto. tank washer with 3 h.p. compressor; quick recovery hot water heater.

Kawasaki KM 100, Yamaha GT80; Amana deep freeze; poplar corner cupboard; single 2 pane door, 2 doors below.

1200 bu. round wire corn crib; Allensville 9 stall calf hutch.

Farm Machinery & Related Items, 10 A.M. Milking Equipment & Cows 12 Noon.

TERMS: CASH OR GOOD CHECK

Leroy and Rebecca Hostetler,

Owners

RD 3, Selinsgrove, PA 17870

Phone: 717-374-1634

Lyster, Clerks

Bryan D. Imes, Auctioneer

Phone 717-527-2449

AU 001656-L

Not Responsible For Accidents

LUNCH

LARGE

PUBLIC SALE

SATURDAY, MARCH 12, 1988

9:00 A.M.

FARM EQUIPMENT- HAY- STRAW- GRAIN

5 TRACTORS, 802 UNI-SYSTEM, 62 HEAD BEEF CATTLE

LOCATED: 962 CHAPEL RD. NEWMANSTOWN, R.D.#1, 3 MILES EAST OF SCHAEFFERSTOWN TAKE RT. 897 TO KLEINFELTERSVILLE. TURN LEFT ON ALBRIGHT RD TO CHAPEL RD — RIGHT ON CHAPEL RD LEBANON CO PA (LOOK FOR SIGNS)

28 HEAD BEEF COWS (some w/Calves by sale day) 2 BULLS

34 HEAD FEEDER CATTLE (Vaccinated-Approx. Weight 500 Lb.)

802 N.I. UNI-SYSTEM: 737 Husking Bed; 730 Snapping roll head (wide row) 4500 FORD (D) w/backhoe & loader; 2840 J.D. Tractor (D); 135 M.F. w/loader (gas); A.C.G w/corn planter & culti. M.F. 92 Combine w/12 ft. grain head & grain trailer. J.D. 7000 4-Row Cornplanter; J.D. 8200 Grain Drill (18 Disc); 849 N.H. Round Baler; J.D. 336 Baler w/thrower; J.D. #5 Mower, N.H. 451 3-pt. Mower; 640 J.D. Hay rake; 1209 J.D. Haybine; Zimmerman 40' elevator; Little Giant corn drag; Two 7 T. Hi-side hay wagons; #216 J.D. & 115 J.D. Unloading Wagons; 2 Flat Wagons; J.D. round bale carrier; J.D. 3 pt. 3 B. 16" Hyd. Plow; 3-pt. Mohawk 7-tooth chisel, Brady Harrow; 252 Hydro. Oliver Disc; J.D. trans. disc; 3-pt. cultivator; 12' Brillion cultipacker; 10' lg. roll cultipacker; 3-pt. weeder; J.D. 35 Harvester; J.D. Chopper; Fox Blower & A.C. blower; hay tedder, N.H. & #54 J.D. Manure Spreaders; Vicon 3-pt. fert. spreader, 3010 JD Tractor (G).

Pittsburg 12 ft. disc; Pittsburg rollerharrow; 3B-16" Ford Plow; J.D. Bale ejector; Ford wh. weights.

30 T. HAY— 25 T. STRAW— 180 ROLLS FODDER—

140 T. CORN— BARLEY— OATS (Approx.)

FORD C600 TRUCK w/GRAIN BOX & DUMP— '71 INT. SEMI-TRUCK TRACTOR

J.D. 212 Lawn Mower w/culti. & scorer; baler twine; chicken coops; 8500 Tob. lath, Tob. press; 3-pt. dump scoop, shovel harrow, hook plow, walking plow, Winpower Generator, Lincoln Welder; Steam Jenny; saw buck; air compressor, Acetylene torch; Silage cart, platform scales, hydro jacks, elec. space heater; oil barrels w/pumps; Tractor & Truck chains, Vice; anvil; wire, drill, fence posts, scrap iron, hay ropes, digging irons, shovels, shop tools, saddle, harness, horse blanket, etc.

H.H. GOODS & ANTIQUES: Outone Hardman Upright Grand Player Piano & piano Rolls; Hammond 13 Pedal draw bar, double keyboard Organ, Round back sleigh, Blanket Chest, Singer sewing machine, 20 gal. crocks, Butcher furnace, 50 MILK CANS: meat slicer, Antique Stereo TV in Cab. (good cond.) Maytag wringer washer, Kitchen cabinets, 2 and 3-pc. Living Room Suites; Sofa bed, Massage cushion, Three bedroom suites, 3 single beds, 3 desks, Ormour, Stereo, 3 Vac. cleaners, Mirrors Tables, freezer, GE. elec. stove, Picnic Table, Small safe, Pole light Canning jars, picture frames, add machine plus many many useful items not listed.

Reason for selling- Due to death in family, Farm was sold.

ORDER OF SALE- SM. ITEMS on wagon, H.H. GOODS, EQUIP & CATTLE.

NO OUT OF STATE CHECKS UNLESS KNOWN BY OWNER OR AUCT.

WOLGEMUTH AUCTION SERVICE

MANHEIM, R. 2, Pa.

PH. 717-665-5664

Clyde H. #1036

Bob #1535

Dennis #2357

Sale By

ANNA G. OBER

Roy S. Ober, Deceased

LUNCH BY FARM WOMEN GROUP #9