

(Continued from Page A7)

CHICAGO (MAR) WHEAT 3.27 3/4 DN 3 1/4 2.77.  
 (MAR) CORN 2.01 3/4 UP 3 1/2 1.44 1/4.  
 (MAR) SOYBEANS 6.33 1/2 UP 13 4 85 1/4.  
 EXPORT: BARGE OR RAIL, PORT OF NEW ORLEANS OR NORTH TEXAS GULF. NO. 1 HARD RED WINTER WHEAT ORDINARY PROTEIN 3.54 DN 4-5 3.04 1/4-3 05 1/4 NO. 2 SOFT RED WINTER WHEAT 3.33-3 38 DN 3-UP 2 3 12-3.14 NO. 2 YELLOW CORN 2 23-2 25 UP 4-6 1.60 1/4-1.63 1/4 NO. 2 YELLOW SORGHUM 3.77-3.86 UP 7 2 98-3.05 NO. 2 YELLOW SOYBEANS 6 58-6 64 UP 10-16 5.05-5.06.

**Green Dragon Hay**

Ephrata, Pa.  
 Friday, Feb. 12, 1988  
 Report Supplied by Auction  
 TOTAL LOADS: 56.  
 ALFALFA: 70.00-146.00.  
 MIXED HAY: 66.00-145.00.  
 TIMOTHY: 70.00-135.00.  
 CORN: 89.00.  
 STRAW: 59.00-85.00  
 WOOD: 27.00 LD.

**North Jersey Market**

Hackettstown, N.J.  
 Tues., Feb. 16, 1988  
 Hay—Straw & Grain Report  
 ALFALFA HAY 3 30 BALE.  
 MIXED 2.00 BALE.  
 CLOVER 2.25 BALE.  
 STRAW WHEAT 2 00 BALE; 1 80 LOW

**Keister's Hay**

Middleburg, Pa  
 Tuesday, Feb. 16  
 Report supplied by auction  
 50 LOADS.  
 ALFALFA, 105.00-135.00; MIXED HAY, 50.00-132.50; TIMOTHY, 75.00.  
 OATS: 9 LOADS 2.00-2.10 BU.; EAR CORN: 7 LOADS 65.00-80.00; STRAW 8 LOADS 57.50-75.00.

**Frederick Co. Hay**

Buckeystown, Md.  
 Thursday, Feb. 18, 1988  
 Report Supplied by Auction  
 TOTAL LOADS: 91. MARKET ABOUT STEADY ON THE BETTER TO FANCY GRADES; LOWER ON THE POORER GRADES; STRAW PRICES LOWER.  
 ALFALFA: 7 GOOD OR BETTER, 90.00-130.00, 11 FAIR, 67.00-80.00, 8 DARK OR DAMAGED, 30.00-65.00.  
 MIXED HAY: 14 FAIR, SOME DAMAGED, 35.00-75.00.  
 TIMOTHY: 8 GOOD, 82.00-95.00, 10 FAIR TO GOOD, 60.00-77.00, 10 DARK OR DAMAGED, SOME BIG BALES, 30.00-58.00.  
 GRASS HAY: MOSTLY BIG BALES, 19.00-50.00.  
 STRAW: 14 LOADS, NO FANCY, 40.00-75.00.  
 WOOD: 5 LOADS SPLIT OAK, 52.00-56.00 CORD, 1 LD. SLAB, 38.00 CORD, 1 LD. ROUND, 52.00-CORD.

**King's Hay**

Kirkwood, Pa.  
 Tuesday, Feb. 16, 1988  
 Report Supplied by Auction  
 TOTAL LOADS: 53.  
 ALFALFA: 61.00-123.00.  
 ALFALFA MIX: 86.00-127.00.  
 CLOVER & MIXED HAY: 3 LOADS AT 81.00; 1 LOAD AT 79.00.  
 TIMOTHY AND TIMOTHY MIX: 70.00-99.00.  
 EAR CORN: 75.00.  
 GRASS HAY: 67.00-100.00.  
 STUBBLE HAY: 57.00-81.00.  
 STRAW: 59.00-95.00.  
 FIREWOOD: 50.00 PER PICK-UP LOAD.

**Belleville Hay**

Belleville, PA  
 Wednesday, Feb. 17  
 Report Supplied by Auction  
 76 LOADS HAY.  
 ALFALFA, 80.00-115.00, MIXED HAY, 50.00-85.00; OATS, 3 LOADS, 2 25-2 30 BU.; EAR CORN, 1 LOAD, 77.50; STRAW, 19 LOADS, 60.00-70.00

**Leinbach's Hay**

Shippensburg, PA  
 Feb. 13 & 16  
 Report supplied by Auction  
 TOTAL LOADS. 89.  
 ALFALFA: 61.00-152.00.  
 MIXED HAY: 44.00-95.00  
 TIMOTHY: 61.00-86.00  
 CLOVER: 67.00-79.00.  
 OATS: 2 20-2.30 BU.  
 EAR CORN: 86.00-92.00  
 CORN FODDER: 30.00  
 GRASS: 60.00-77.00.  
 STRAW: 45.00-72.00.  
 WOOD 26.00-52.00 LD

**Roth Hay**

Kirkwood, PA  
 Thurs., Feb. 18  
 Report Supplied by Auction  
 8 LOADS.  
 ALFALFA, 30.00-61.00; ALFALFA GRASS MIX, 95.00-101.00; MIXED HAY, 82.00; TIMOTHY, 78.00; TIMOTHY CLOVER MIX, 69.00

**Westminster Hay**

Westminster, Md.  
 Friday, Feb. 12, 1988  
 Report Supplied by Auction  
 TOTAL LOADS 41.  
 ALFALFA: VERY GOOD, 96.00-120.00, 2.10 BALE; GOOD, 80.00-95.00; FAIR 60.00-67.50  
 ALFALFA MIX, 1.20 BALE, 70.00-115.00 TON. TIMOTHY: 1.20 BALE, 50.00-82.00 TON. TIMOTHY MIX .95 BALE; 2ND CUTTING 82.00 TON.  
 OATS: KENTUCKY FESUE: 1.00 BALE, GRASS RND BALES, 27.00 BALE.  
 WHEAT: 1.00 BALE, 71.00 TON, OAT. 1.05 BALE, 65.00 AND 70.00 TON, BARLEY 79.00 TON  
 WOOD: HARDWOOD 76.00 CORD MIXED: 30.00 CORD.

**Hackettstown Poultry & Egg**

Hackettstown, N.J.  
 Tuesday, Feb. 16, 1988  
 Report Supplied by Auction  
 HEAVY FOWL 40-55  
 LEGHORN FOWL .10-.30.  
 ROASTERS 85-1.10  
 BATAMS .70-1.40.  
 ROOSTERS 45-1.25  
 DUCKS .30-.60  
 RABBITS 65-1.60.  
 PIGEONS 1.60  
 GUINEAS 1.40-1.75.

**EGGS GRADE A WHITE**

JUMBO X LGE. .37-.65; LARGE .32-.55; MEDIUM .29-.50  
**BROWN**  
 JUMBO X LGE. .37-.59, LARGE .33-.45, MEDIUM 25-.33; SMALL .15.

**Garden Spot Tobacco Auction**

New Holland, Pa.  
 Week of Feb. 15, 1988  
 Report Supplied by Auction  
 GOOD MIDDLES .90-1.05.  
 GOOD TOPS .90-1.00.  
 GOOD BOTTOMS .35-.65.  
 OUT-GRADES .05-.40.

**Paradise Tobacco Auction**

Paradise, Pa.  
 Week of Feb. 15, 1988  
 Report Supplied By Auction  
 MIDDLES .90-1.02  
 TIPS: .90-1.00.  
 GOOD BOTTOMS .35-.70  
 OUT-GRADES .05-.35.  
 TOTAL POUNDS SOLD. 198,523

**Keister's Middleburg Livestock Auction**

Middleburg, Pa.  
 Tuesday, February 16, 1988  
 Report Supplied by PDA  
 CATTLE 366...RDA...Compard with last weeks market: Slaughter steers and cows about steady. Choice 1100/1475 lbs. slaughter steers 65.75-70.75, Select 60.00-65, Choice holsteins 63-65.35, Select 59-62.75, few Standard 58-62.25. Few High Choice & Prime sl. heifers 67.75-69, Choice 64.50-68.50, few Select 60.00-64.00. Breaking Utility & Commercial sl. cows 48.00-53.10, couple to 55.10, Cutter & Boning Utility 47.00-52, Canner & Low Cutter 44.00-47, Shells down to 42.50. Few Yield Grade No. 1, 1220/1720 lbs. sl. bulls 58.00-69.75. Feeder Cattle: Medium Frame No. 1, 350/750 lbs. steers and bulls 65.00-82.00. Few Medium Frame No. 1, heifers 400/625 lbs. 65.00-75.00.  
 CALVES 193...Few Choice vealers 105.00-116, Standard and Good 70/100 lbs. 90.00-98, Utility 60/80 lbs. 75.00-88.00. Farm Calves: Holstein Bulls 90/130 lbs. 110.00-161, mostly 125.00-155.00, Hol. Heifers 90/115 lbs. 98.00-112.00.  
 HOGS 634...Barrows and gilts .50 to .75 higher. US No. 1-2 210/245 lbs. 49.00-50, No. 1, 215/240 lbs. 50-51.50, 2-3 200/250 lbs. 48.00-49, 2-4 200/270 lbs. 46.00-48.00. US No. 1-3 300/650 lbs. sows 35.00-39, few light weights 42.00, 2-3 275/575 lbs. 30.00-35.00. Boars 29.00-32.50.  
 FEEDER PIGS 395...US No. 1-3 20/35 lbs. feeder pigs 28.00-38, 35/50 lbs 36.00-46, 50/65 lbs. 45.00-54.00 --- all per head.  
 SHEEP 21...Choice 70/130 lbs wool slaughter lambs 81.00-91.00 Slaughter ewes 19.00-45.00.  
 GOATS 14...Large 42.00-81.00 - per head.

**Peoria Cattle**

Peoria, Illinois  
 Wednesday, February 17, 1988  
 FEDERAL-STATE OPENING, MID-SESSION AND CLOSE CATTLE: 150 NOT ENOUGH SALES OF ANY CLASS FOR AN ADEQUATE MARKET TEST LOWER UNDERTONE NOTED

**MARKET RISK**

**A Farming Option**



Building New?  
 On Contract Now?  
 Thinking About Expanding?  
 Investment Opportunities

**Talk To Us About:**

- Earnings - Free Of Market Fluctuations
- Removing Feed Cost Fluctuations - Based On Production Levels
- Boar, Sow, And Pig Ownership In 5 Years
- Replacement Boars And Gilts Provided
- On Farm Computer With Production And Financial Records
- Comprehensive Farm Management And Financial Management Guidance
- Complete Project Management And Guidance

Call: 800-873-5300

**Purina Mills, Inc.**

Serving The Needs Of Agriculture



Trade Mark Ralston Purina Co

**\$ SAVE \$**

- \* DRIP IRRIGATION & SUPPLIES (Full Line)
  - \* MULCH LAYER MANUFACTURING Raised Bed & Flat Bed Buy Direct & Save (Lower than Last Yr.)
  - \* PLASTIC MULCHES (1 1/4 mil & 1 mil)
- We Try To Sell The Best & Leave The Rest

JOHN W. ZIMMERMAN IRRIGATION  
 R#1 Box 358, East Earl, Pa. 17514  
 (215) 445-6976

**FASTRACK Micro Feeds**

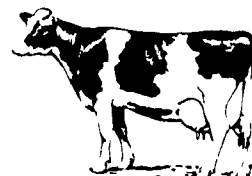
**Livestock Managers: Keep costs down, profits up**

FASTRACK™ Micro Feeds assure a consistent supply of lactic acid bacteria and digestive enzymes in your herd's food supply. By helping digestion and giving the highest possible nutrient value from feed, FASTRACK naturally increases the efficiency of your feed program and gives you a better return on your investment.

With LS4000, its unique blend of beneficial microorganisms, yeast and enzymes, FASTRACK is designed to improve survival rates, increase weight gain and improve feed efficiency.

To find out more contact: **FASTRACK** Setting the pace in livestock management.

Arn Supply Inc.  
 860 Hickory Lane  
 Middletown, PA 17057  
 (717) 944-6100



CONCLIN