

STITZEL FARM EQUIPMENT, INC.

East Windsor St. & Krick Lane **Hamburg, PA 19526**
Phone Bus. 215-562-8377 Home 215-562-7451 or 215-562-5740

TRACTORS:

J.D. New 2950 w/R.G., Used JD 4850 C.A. P.S., MFWD, Full Equip. w/42" Duals, Very Nice; JD 4650 C.A. P.S., MFWD, Very Nice; JD 4450 C.A., Q.R., Real Nice; Used JD 2950 C.A., Like New; JD 4640 C.A., P.S., Nice; 4440 C.A.P.S. - Real Nice; JD 4440 C.A. P.S.; JD 4440 C.A. Q.R., 20.8x38 Tires, JD 4240 C.A.P.S.; JD 4240 Q.R., ROPS, JD 2940 w/F.W.D. (81) 6620 S.H., 1300 hrs., Dial-A-Matic w/215 Flex. JD '81 Model, 6620 LL, w/215 flex, real nice JD '81 Model 6620 LL w/216 Flex, very nice. JD (81) 6620 Side Hill w/700 hrs., looks like new JD (81) 4420, low hrs., very nice

1976 JD 7700, real nice JD '81, 7720, Cab, Air, Turbo, Hydro w/220 Flex JD 6620 S.H., 800 Hrs., real nice, ~~\$36,000~~ \$33,500 JD 6620 LL, 1 owner, nice, ~~\$27,500~~ \$25,500

(75) 6600 D Rotary Screen good

1977 JD 4400 D., C.A. w/23x26 tires, \$11,500

55 Sq B w/Cab-Good w/2 Heads, \$3,250, 55 C.S. Sq Back w/Cab

IH (Used) 1460 Axial Flow - 800 Hrs., 863 C.H. & 15' grain for, ~~\$38,500~~ \$36,500

MF 550 D., C.A., low hrs (77) IH 815 D., C.A. Hydro, 4WD w/810 Grain & 4R Corn.

(76) Gleaner L Corn & Soybean Special, D., C.A. Hydro w/16' Flex & 630 Corn.

IH 715 Gas w/Cab & 810 grain for \$4,850, IH 82 Pull Combine, (75) 510 D Hydro w/Cab; NH TR70 C.A. Hydro, Gleaner (76) FD. w/C.A. - Nice; IH 105 w/Cab & 10' Grain, nice; IH 205 Combine w/Cab & 10' Grain.

NI 702 & 705 Uni-Systems w/Full Eq., NI 702 Uni w/727 Bed, 729A Sheller & C.H.; NI 702 D w/727 bed & 3R C.H.; 767 Super Chopper; NI 727 Husking Beds; NI 737 Husking Beds; NI 729A Shellers; NI Uni 740 Feeder House

CORNHEADS: J.D. 843 LP, 643 LP, 643, 444 LP, 444 (SOLD), 443, 343, 244, 243, 205 (40) 234, 435, JD 454 Row Crop Head IH 863, 844, 843, 833, 744, 227

AC GL 440, C440, A438 Black, A630 Black, L2, L438, M430, Gleaner C430 C.H., F335.

MF 1163, 1144, 1143, 63, 44, 33, 43, 24, 222, 422, 44-\$900 & Up

NI 846 N 6R C.H.; 743, 730, 734, 725, 723, 762, 763, Ford 4-30'; Case (404); NH 962 4RW, 4RN, 6RN Corn Head.

NH 924, 4RW; NH 974 6R; White 706N; Oliver White 4N.

GRAIN HEADS: J.D. Used 12'-15' Incl. 213 & 215 & (2) JD 216 Flex; 213 & 215 Rigid.

I.H. 810-13' Thru 16.5' w/Reg or Floating; New 820, 1 ~~SOLD~~ Flex, \$5,500.

MF 10'-16' Reg. or Floating Bar, A.C. E10', G15'.

NI 713 Flex Or Rigid NH 972, 20' Flex; NH 960, 13'

Original; 656 Gas & Diesel, 656 D. Hi-Clear; IH 1026 Hydro w/Cab, As Is; 826 D. Hydro; 1206, Nice, Farmall 806 Dsl., WF, FH, 38" Tires, Nice, 706 D. - W.F.E. - 3 pt. - \$5,000; F706D, WFE, 3 pt.; 706 Gas T/A, W.F.E.; IH 240 Utility; IH B275 Dsl., WFE, 3 Pt.; F560 D., WF, FH; F560 D w/Fast Hitch, IH 460 U Gas, FH, PS & Shuttle; F450 Gas, Tri., F.H.; F560 Gas; F450 D.; F504D.; F400 Gas; Farmall 200, Farmall M; IH H w/Loader; ~~SOLD~~ H; Farmall Super C w/FH, Super A w/Sickle Mower, Plow & Cultivator; Farmall A w/Plow, Farmall Super A w/Wagner Hyd. Loader w/Blade & Plow.

New AC 8050 C.A., P.S., rad tires, fully eq

AC New AC 6080, Used AC 6080 w/ROPS, AC 7060 C.A. w/Duals, AC 7060 C.A. Duals, One Owner, 7045 C.A., 20SP, 7040 C.A.P.S., Like New, AC 7000 C.A., PS, Original, AC 200 D original, AC 220, real nice, XT190D w/3 pt.; AC CA, WF w/Cult

CASE Case 1594, P Shift, low hrs., like new, Case 2590, CA, PS, 1600 hours; 1370 C.A.P.S. Factory Duals; 2090 CAPS, \$14,800; 930D, WF 3 pt.; 830 Gas, WF, 3 pt.; Case 730 D., WF, 3 Pt.

MISC. Versatile 500, 4WD, 3 pt. & PTO; (81) Deutz DX 160 CA, Very Nice, M.M. Vista G1000, Long 460 Dsl., 4WD, w/Loader.

Tractors & Equip. Just Traded

JD 4450 ROPS, PS, MFWD 500 Hrs., Like New; JD 950 w/P. Steering, Ford 5000 Gas, SOS w/727 Ldr.; NH 451 Sickle Mower; JD 444 C.H.; Case IH #90 Ldr., Like New; Bearcat 14' Cultimulcher, Excellent, Ansel Cab w/Air For JD 30 Series; New JD Roll Guard For 2440, Etc.; IH 50 4R Shredder; 4R S Tine Cultivator; Ferguson 11' Chisel; Bush Hog 7' Chisel, JD 400 Rotary Hoe, IH (77) 915 D Combine w/863 C.H.; Tibben 12' Auto Reset Ripper Chisel, JD 500 Rd Baler, JD 555 Crawler Loader, 1983 Butler Batch Dryer, AC 653 Crawler w/6 Way Blade, IH 80 Pull Combine

CORN PICKERS (5) (Used)

325-2RN w/12 Roll Husker, Shellers & Super Shellers, NI 325 w/8 Roll Bed, (4) (Used) 324-2RW w/12 Roll Huskers, Shellers & Super Shellers, (2) NI 323, 1R Picker, \$2450-\$2750

New NI 329 Super Sheller List \$6700.00, Special \$3,550, NI 330 - 3 RN w/Supershellers, 325 2RN w/Grinder.

HAY PU.

(2) GEHL 600 w/2R. Hesston 7020 Chopper w/1R & Hay PU.

FORAGE HEADS: N.H. 717-S Direct-Cut for 770 & S717; 890 EN-2RN Snapper Head; 770-1R Snapper Head; NH 822 Silage Head; 1, 2, & 3R Silage Head; NH 880W PU, NH 880 S Direct Cut Head; NH 890 N3 3R Corn Head; Incomplete.

J.D. 1, 2 & 3R Snapper Heads; 2 & 3 R Silage Heads, New & Used 5 1/2' Hay Pickups; JD 243 C.H. w/adaptor plate; 3 JD C.H. harvester adaptor plates; JD 8' Direct Cut Head, JD 4R 30" Stalker Head, Like New, JD 7' Hay PU

IH 2 R N Silage For 550-650

FOX 984, 4R Silage Head, 2 CSB 2RW - Snapper Head, 263-2 RW, 215-109 Hay Pickup, 476 - 7' Hay Pickup

GEHL HA 400 Pickup.

FLAIL CHOPPERS Used NH 38 & 36, Bearcat 72A Flail Chopper, NI 4 R Shredders

HAY EQ.: BALERS: JD 337 Baler w/Thrower, used 2 seasons; JD 466; JD 346 Wire w/Thrower.

NH 315 Baler ~~SOLD~~ Thrower, NH 315 Baler, NH 275 w/Thrower, NH 282 Baler w/Thrower, NH 282 No Thrower, NH 280 Baler, NI 456 Round Baler; NH 851 Rd Baler, MF 124 Baler w/Thrower; Vermeer 706 Round Baler, Ford 509 Baler.

RAKES Used NH 258 Rake, Hyd Drive & Dolly Wheel J.D. 660 w/Dolly Wheel; IH 3 Pt 5 Bar Rake, Used Grim 17' Hay tedder, New Pequea hay tedder, \$1,285

HAYBINES: NH 1495 D Hydro w/Half Cab; 478, IH 1190 Haybine, JD 1380 Hydro Swing Haybine; JD 1219 Haybine, like new, IH 990 haybine, Hesston PT10 Haybine

(Used) M.C. 7E, NI 279 Cud-tioner; (2) NI 272 Cud-tioner; NH 1034 Stack Wagon

PLANTERS JD 7000, 12R Front Fold Planter, Dry Fert w/No-till, full equipment, JD 7000, 8R 38", Full Equipment; (2) JD 7000, 8R 30" Liq. Fert., Full Equipment, JD 7000, 8R 30" Dry Fert., Full Equipment, (2) JD 7000, 6R Dry Fert., Fully Equipped, JD 7000, 4R, (Used) 7000-6R Cons Liquid w/No Till, 7000-4R Dry & Liquid, JD 4R Cons. w/Dry Fert. & Insect; (2) JD 7000, 4R Dry Fert., Full Equipment, JD 7000, 4R 36" Plate, Dry Fert., Full Equipment; JD 1240 plateless, nice; JD 1240, 4R Planter w/Monitor; IH 800, 8R Liq. Fert.; IH 800, 6R Dry Fert.; IH 400, 6R Dry Fert. w/No-Till, IH 400, 6R Liq. Fert.; IH 56, 4R Planter; Hiniker 4R Econotill Planter, No-till, w/Kinze Units.

DRILLS: JD 8300 (Like New) 100 Acres; 21x7 D.D. w/Soybean Att.; JD 8300, 21x7 DD w/Press Wheels, JD 8300 23x7 Drill; JD 8350, 23x7 w/Fert & Seed

IH 5100 21x7 Drill; JD 8250 Drill w/Seed, 21x7 SD; Tye 13' No-Till Drill, Brillion 8' & 10' Seeder; New Gandy 1011A Fert. Spreader; Brillion SS 1201 10' Transport Seeder.

GRINDERS/MIXERS: IH 1150, nice; Gehl 115 grinder mixer; NH 352 Grinder Mixer.

BLOWERS: Gehl 99, nice; JD 65.

TILLAGE EQ.: PLOWS JD 2 #845 Rollover; IH 420 3X Plow; Ford 142, 4X Plow; JD 2500 4x18 Reset; JD 4X 16" Semi Mount Plow; IH 710, 4X 18 Spring Reset; IH. 5x16 Semi-Mount w/Spring Reset; IH 540, 4X; IH 720, 5X Toggle Trip; OLIVER 546-5x16 Spring Reset; White 508, 5X Reset; White 508, 6X Reset; I.H. 700- 6x16 Spring Reset; JD 2500 5X Reset; JD 2800 5X Vary Width Reset, JD 3200, 6X Reset, JD 2450, 6X On Land, Oliver 6X Reset, WHITE 549-7X Sp Reset; J.D. 7X, M.F. 6X On Land Hitch; JD 2700 8X On Land Hitch Plow, Real Nice, IH 800 10X Flex Spring Reset.

CHISEL PLOWS Brillion 10', IH. 55-12'; (2) 7' 3 pt. chisel plows; Bush Hog 10' Chisel Plow w/Buster Bar, Brillion 12' Chisel Plow w/Buster Bar, Brady Model 1000 10 & 14' Chisel Plows

DISCS: JD ~~SOLD~~ Disk w/Transport; White 252, 12' Disk w/Gandy Seeder & Harrow; White 281, 12' offset Disk; Miller 14' Offset Disk, like new; JD 210 Disk; JD 310 Disk; JD 230, 18 & 20' Hydraulic Fold

MULCH TILLERS Willbeck 13'; Glenco SS18 Fold Soil Saver, Glenco SS13 Hyd Fold Soil Saver, (2) JD 1710 - 11'.

CULTIMULCHERS. New Dunham Lehr 13' at dealers cost; JD & Brillion 10', 12', 13' & 15' cultimulchers, JD 10' Roller Harrow.

CULTIVATORS IH 80 2R Front Mount, JD 2R Cultivator; JD 4R Front Mount Cultivator, (4) JD RG 4 Cultivators; JD & IH 6R 3 pt cultivators; MF 6R S Fine Cultivator; J.D.

1000-25' - Hyd. Fold; Brillion 14' Field Cult. w/Midwest Harrow; IH 68, 6R Front Mount Cultivator; New IH 4500, 18' Vibra Shank; Brillion 22' Hyd. Fold Cultimulcher.

MISC: IH. #2 & 7 Shank V-Rippers; Glenco Soil-Finisher 12'9" - Like New; (2) Howard 13' Rotavator; Knowles 16' wing trans. harrow, used 4 acres; JD Transport Wing Harrow; Brillion & JD 20' Wing Harrows.

New JD 28' Hyd. Rotary Hoe Under Dealer Cost; Used 400-15'.

INDUSTRIAL CRAWLER LOADERS Oliver OC48; JD 840 Self Loading Scraper, Case 584 D Fork Lift.

SKID LOADERS NH L445 D Skid Loader w/Backhoe Attach, NH L35, Ford CL40 1978 Case 580C Dsl. L.B. ROPS, Cab w/Heat, AC 715B L & B, IH 3514 Loader Backhoe, MF 302 LB, Cletrac crawler w/blade, IH TD14, Ankle Blade, \$3,995, IH TD9 Dozer

LOADERS & BLADES JD 45, 48, 58, 145, 148, IH 1850 2000 2050, 2350 MF 246 Loader, ~~SOLD~~ ~~SOLD~~ er for Case 730, Schwartz 1400 loader Atswhy HD loader for 4WD, (New) J.D. & IH Buckels, JD 8' Dozer Blade For 4430, Etc., JD 155, 9' Heavy Blade w/Hydraulics

LAWN & GARDEN JD 850 D w/Belly mow er, Satoh D w/3PT Tiller, Cub 185 Loboy w/Mower & 3 Pt, Sears 24 HP w/Ldr, 3 Pt, Cadet 782, Cadet 1250 & 1450 128, J.D. 4300 & 318, 317, 314, 300 214 212, 210, 160 130 like new, 111 AC 716 AC 620 w/3 Pt & Mower Economy 14HP w/Mower & Blade (New) Johnson Loader For Cub Loader Loader For JD 400 Satoh 650 w/3 Pt As Is, Kwikway Loader For Cub Loboy

1975 Model Ford LTD Landau, One Owner, Fully Equipped

Rotary Cutters Used Brillion 12, Used FMC 13', Woods D80 Rotary Cutters, New NH 463 Disk Mower, Woods S106 Ditch Bank Mower

SICKLE MOWERS IH 1300 3 Pt Sickle Mower, Ford 501 3 Pt, IH 1100 Pull Type, IH 115 Side Mount JD #10 Side Mount

Manure Spreaders Martin S-1678 Tandem Axle ~~SOLD~~ Spreader, NI 206, Hedund Martin S1263 Scavenger, NI 12A, Excellent, JD 54 Spreader NI 218 Tandem Axle Manure Spreader

Trailer load of (New) Kilbros Bins & Running Gears, Used Kil Bros 375 Bin w/Auger, New EZ Trail 10T Running Gear, Oliver 6T Running Gear, Dan-huser Post Hole Digger, Hobbs 1030 95 Ft Irrigation Reel w/Nelson Big Gun Used One Day, Farmite 500 gal Sprayer, New Demco 500 gal Sprayer, Rex 400 Gallon Sprayer, Arts way 850A Wagon w/Scales, Gehl BF190 Feed Wagon, Badger Liq Tank, like new, Field Queen 1408 Side Dump Wagon, Mel Cam 410 Rock Picker, Bestand Rock Picker, McKee 720, 84" 3 Pt. Snow Blower, (New) McKee Snow Blower Front Mount, JD Quick Couplers, JD 42' Cast Wheels and Tires, IH Flat Top Fenders For 706-1466, IH 66 Series Cabs, Ansel ROPS Cab For JD 2640, Etc., (New) Full Vision Cabs For MF 275 & 285, Cab For Case 70 Series, Damaged IH 86 Series Cab, J.D. & IH Front & Rear Wls., JD 243 Corn Head w/Adaptor Plate

IH Loadstar C01800 w/Grove Rollback, Ford Cabover w/Rollback, \$3,850 As Is

Muv All 30 Hyd Implement Trailer

JD Roll Guards, Fast Hitch for 560 & 450, JD belly mowers for JD 850 & 950 etc

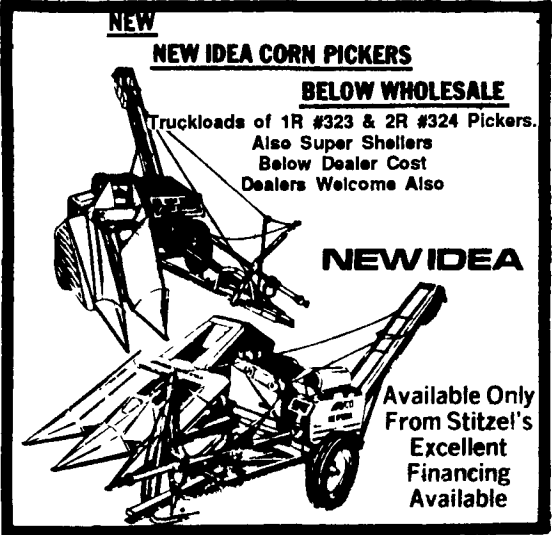
STRAW CHOPPERS For JD 4400 6600 6820, 7700, MF 510

MECHANICS SPECIALS TRACTORS 4020 TI

IH 1256 Motorwork, \$3 950

CASE 1410 Needs Motor

AC XT190, clutch, \$3,950, JD 4520 w/Cab, \$6 950, Farmall 1566 w/fre damage cab



New NI Corn Picker Parts: 323, 324, 325 Beater Units, H.D. PTO's, Elevator Extensions, Mechanical Lift Levers and Elevators

M.F. 2705 C.A., 24SP, Duals, real nice, 1155 C.A.M.P. - \$8,500, 1135 C.A.M.P., 1977 MF 1135 CA, Duals; MF 1085 Dsl.; MF 175D, MF 165 U Gas, MF 1130, MF 1130 (Needs Motor-work), MF 40 Industrial Loader, Gas w/Half Cab, Ferguson 35 Dsl

FORD TW 35, used 150 hrs., local trade, like new, Ford 7700 DP w/Cab; Ford 6700 w/Dual Power & Ldr.; Ford 6700 CA, DP, w/Ldr. & 3 Pt. Forklift; Burnt JD 3960 Chopper w/2R Corn Head.

N.H. 892 w/Elec. Controls, 2R & Hay PU; N.H. S717; NH 782 w/heads; NH 770 w/heads; (3) NH Super 717 w/1R C.H. \$975 to \$1,400, NH 707 Chopper w/1R Corn Head; NH open end hay pickup heads, 6'; NH 890 w/2 or 3R C.H.; NH 890, 2R Super Head; NH 890 direct cut head.

IH 720 Chopper w/2R C.H. & Hay PU & Elec. Controls. Gehl 1200 Chopper w/Elec Controls, 3 RW C.H. &

PICKER: IH 1PR Picker; NI 319 Mtd. Picker

FORAGE EQUIP.: Forage Harvesters w/Choice of Heads.

JD 5820 Chopper, C.A., Hydro, 4WD, Full Equip., Very Nice

5200 S/P, C.A., Hydro, 4WD, real nice; JD 4R 30" Stalker Head, Like New.

JD 3940 Chopper w/Elec. Controls, real nice; JD 3800 w/Elec. controls; JD 34 Chopper w/1R C.H.; Burnt JD 3960 Chopper w/2R Corn Head.

N.H. 892 w/Elec. Controls, 2R & Hay PU; N.H. S717; NH 782 w/heads; NH 770 w/heads; (3) NH Super 717 w/1R C.H. \$975 to \$1,400, NH 707 Chopper w/1R Corn Head; NH open end hay pickup heads, 6'; NH 890 w/2 or 3R C.H.; NH 890, 2R Super Head; NH 890 direct cut head.

IH 720 Chopper w/2R C.H. & Hay PU & Elec. Controls. Gehl 1200 Chopper w/Elec Controls, 3 RW C.H. &

FEBRUARY SPECIALS

TRACTORS	Price
JD A w/227 Mtd Picker	\$ 950
JD 5020 w/Duals, as is	\$ 4,500
JD 4020 D., P.S.	\$ 5,450
JD 4020 D	\$ 5,850
JD 4010 D	\$ 4,750
JD 3020 D Tricycle	\$ 4,950
JD 4620 w/Cab, Good Cond	\$ 9,500
JD 6030 Cab & Air, (175 HP), Nice	\$12,950
JD 2940 w/Hi-Lo, 2 Post R/G	\$12,500
IH 706 Gas, Tri., F.H.	\$ 3,250
IH 706 D, WFE, 3 pt	\$ 4,850
IH 1206 WFE	\$ 5,950
Case 1976, 1370 C.A.P.S., Duals	\$ 9,750
MF 1100 Diesel w/Multi-Power	\$ 3,500
COMBINES	
1973 JD 8800 D. C.A. w/Grain Head (Needs Work)	\$ 4,750
JD 3300 G w/Cab & 244 Corn	\$ 5,400
IH '76, 915 D, Cab & Air, Turbo Hydro w/15' grain	\$ 9,850
IH 815 D C.A. Hydro w/810 Grain	\$ 8,850
MF 510 Diesel w/Cab & Q.T. Grain	\$ 4,440
TILLAGE EQ.	
New Landoll 2' Hyd Fold Chisel List 11,000 SOLD	\$ 7,450
New DMI 12' Chisel, Pull Type	\$ 2,350
Glenco 13' Chisel	\$ 1,250
Ford 142, 6x Spring Reset Plow	\$ 1,750
IH 700 6x Spring Reset	\$ 1,975
MISC.	
NH 850 Rd SOLD er	\$ 2,150
JD 410 Round Baler	\$ 2,950
IH 5 Bar 3 Pt Rake	\$ 350
Fox 2000 Chopper w/3 Heads	\$ 950
NH #8 Forage Wagon	\$ 1,150
New JD 8300, 16x10 DD Drill	\$ 3,500

Largest Selection Of Farm Equipment In The East