



Livestock market and auction news

Virginia Weekly

Richmond, Va.
Thursday, February 11, 1988

WEEKLY REVIEW IN VIRGINIA MARKETS IN REVIEW: FEB. 4-10, 1988: FEEDER STEERS AND HEIFERS IN VIRGINIA AUCTIONS SOLD STEADY TO \$3.00 HIGHER WHILE MIDWEST PRICES WERE STEADY TO \$3.00 HIGHER.

SLAUGHTER STEERS AND HEIFERS WERE HIGHER AT VIRGINIA AUCTIONS THIS WEEK WHILE MIDWEST MARKETS WERE STEADY TO

\$2.00 HIGHER. BOXED BEEF PRICES WERE \$4.90 LOWER LAST WEEK AS THE BOXED BEEF CUT-OUT VALUE REACHED \$101.04/CWT. TUESDAY.

COWS AND BULLS IN VIRGINIA AUCTIONS WERE STEADY TO \$2.00 HIGHER WHILE MIDWEST PRICES WERE STEADY TO \$4.00 HIGHER. BEEF PRODUCTION LAST WEEK WAS 5 PERCENT BELOW THE PREVIOUS WEEK AND 3 PERCENT BELOW A YEAR AGO. AVERAGE DRESSED WEIGHTS WERE 14 LBS. HEAVIER THAN LAST YEAR.

VEAL AND CALF PRICES IN VIRGI-

NIA AUCTIONS WERE STEADY LAST WEEK, FOLLOWING MIDWEST PRICES WHICH WERE WEAK TO \$4.00 LOWER. SLAUGHTER WAS 4 PERCENT ABOVE A YEAR AGO AND 6 PERCENT BELOW A YEAR AGO AS AVERAGE WEIGHTS WERE 6 LBS. LIGHTER THAN A YEAR AGO.

LAMB PRICES AT VIRGINIA AUCTIONS WERE STEADY TO \$2.00 LOWER LAST WEEK AS MIDWEST PRICES WERE STEADY. SLAUGHTER LAST WEEK WAS 1 PERCENT ABOVE THE PREVIOUS WEEK AND 6 PERCENT ABOVE A YEAR AGO. AVERAGE WEIGHTS WERE 1 LB. HEAVIER

THAN LAST YEAR.

HOG PRICES IN VIRGINIA AUCTIONS WERE STEADY TO \$2.00 HIGHER THIS WEEK. PORK PRICES WERE MIXED DURING THE WEEK. PORK PRODUCTION LAST WEEK WAS 3 PERCENT BELOW THE PREVIOUS WEEK AND 3 PERCENT ABOVE A YEAR AGO. AVERAGE WEIGHTS WERE 3 LBS. LIGHTER THAN LAST YEAR.

THE RICHMOND HOG MARKET NO REPORT.

THE SOUTHEAST VIRGINIA HOG MARKET CLOSED STEADY THAN LAST WEDNESDAY WITH BARROWS AND GILTS US 1-4 200-240 LBS \$45.00-46.00 PER CWT. TOTAL RECEIPTS FOR THE WEEK 13,077 HEAD.

AT HARRISONBURG, LYNCHBURG AND TAPPAHANNOCK HOG PRICES WERE STEADY TO \$1.00 HIGHER THAN LAST WEDNESDAY AT \$42.00-46.50. SOWS RANGED \$30.00-34.00 AND BOARS \$23.00 PER CWT.

SLAUGHTER STEERS AND HEIFERS 1%, SLAUGHTER COWS 18%, SLAUGHTER BULLS 1%, SLAUGHTER CALVES AND VEALERS 2%, FEEDER CATTLE UNDER 600 LBS 59%, OVER 600 LBS 19%.

PRICE RANGES FOR VIRGINIA AUCTIONS

SLAUGHTER CATTLE CHOICE STEERS 2-3 1000-1150 LBS 63.50-65.00 CHOICE STEERS 2-3 1150-1300 LBS 64.00-65.85 CHOICE STEERS 2-3 1300 LBS & OVER 65.00-66.00 CHOICE HEIFERS 2-3 900-1000 LBS 64.00 CHOICE HEIFERS 2-3 1000-1150 LBS 60.35-65.50 UTILITY & COMMERCIAL COWS 40.00-52.25 BULLS 1-2 900-1300 LBS 45.00-58.75 1-2 1300-1600 LBS 52.00-60.75 1-2 1600 LBS & OVER 52.00-64.00 SLAUGHTER CALVES AND VEALERS VEALERS - HIGH CHOICE AND PRIME 100-250 LBS 89.00-105.00 GOOD AND CHOICE 100-250 LBS 81.00-94.00 CALVES - GOOD AND CHOICE 250-500 LBS 70.00-85.00 SLAUGHTER LAMBS HIGH CHOICE & PRIME 95-125 LBS 80.00-83.00; SPRING 83.50-84.50 SLAUGHTER HOGS US 2-4 200-250 LBS 43.75-46.50 SOWS US 1-3 300-500 LBS 30.00-38.25; 500 LBS & OVER 32.00-39.25 FEEDER CATTLE FEED-

ERS: MEDIUM 1 300-500 LBS 92.00-105.00 500-700 LBS 81.00-92.00 HEIFERS; MEDIUM 1 300-500 LBS 74.00-86.00 FEW 90.00 500-700 LBS 64.00-79.00 FEW 82.00.

Southwest Virginia Area Livestock Summary

Wytheville, Va.

Tuesday, February 9, 1988

ALL TRENDS COMPARED TO LAST TUESDAY.

SLAUGHTER HOGS 12 HEAD - NO TRENDS REPORTED. SOWS US 1-3 300-500 LBS 35.00 500 LBS & OVER 33.00-33.50.

SLAUGHTER CATTLE 104 HEAD - SLAUGHTER COWS STEADY TO 2.00 HIGHER. SLAUGHTER BULLS STEADY.

SLAUGHTER COWS 97 HEAD CUTTER & BNG.UT. 1-3 44.00-50.00 BRKG.UT. & COMM. 2-4 43.75-49.50 CANNER & LOW CUTTER 1-2 36.00-43.25.

SLAUGHTER BULLS 7 HEAD; 1-2 900-1300 LBS 48.00-53.75 1-2 1300-1600 LBS 54.75-58.75 1-2 1600 LBS & OVER 53.75.

LAMBS 64 HEAD - SLAUGHTER LAMBS 2.00 LOWER. HIGH CHOICE AND PRIME 95-125 LBS 82.00 CHOICE 85-125 LBS 75.00 FEEDER LAMBS CHOICE AND FANCY 70-85 LBS 82.00 SLAUGHTER EWES ALL GRADES 22.00-30.50 SLAUGHTER RAMS ALL GRADES 25.00.

FEEDER CATTLE 101 HEAD - NO TRENDS REPORTED. STEERS; MEDIUM 1 MED.&LARGE 2 300-400 --- 116.00 400-500 --- 91.50 500-600 84.50-85.00.

HEIFERS; MEDIUM 1 MED.&LARGE 2 300-400 79.00-84.00 81.00-88.00 400-500 --- 75.50 500-600 75.50 --- 600-700 70.00-71.00 --- BABY CALVES RETURNED TO FARMS 25 HEAD NEWBORN TO 4 WK OLD 70.00-102.50 PER HEAD.

CRIPPLED AND DISABLED

Cows, Steers & Bulls For Slaughter Under USDA Inspection

Call Wayne Taylor

717-866-6289

215-286-9400

Lebanon, Berks, Lancaster & Chester Counties

ATTENTION FARMERS

The New Way To Market Your Livestock
HATFIELD AND MOYER
PACKING CO. AND PACKING CO.
Will Receive Hogs Will Receive Cattle

At The

BLAIR-BEDFORD
BUYING STATION
RD 1 Martinsburg, Pa

MONDAYS - Hogs 8 AM to 11:30 AM
Cattle & Calves 8 AM to 3 PM

THURSDAYS - Cattle & Calves
8 AM to 3 PM

- No commission or yardage fees deducted from check
- Livestock weighed and paid for immediately
- You may call our office sale day for prices

DALE R. HOOVER - Owner

Business 814-793-3077
Residence 814-793-2657



ATTENTION FARMERS

EVERY MONDAY
HATFIELD PACKING CO. and
MOYER PACKING CO.

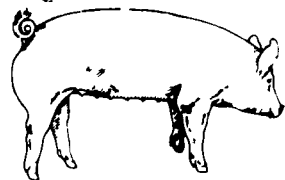
Will Receive Your
Hogs and Cattle at the
DANVILLE LIVESTOCK MARKET

RD 4, Danville, PA

- We will receive your hogs from 8 AM to 12 Noon every Monday. Your hogs will be weighed and paid for immediately.
- We will also accept your sows & boars.
- Your cattle will be received from 12:30 to 5 P.M. We will either pay you for your cattle immediately or you may sell them dressed weight.
- There will not be a commission or yardage fee deducted from your check.
- You may call our office Monday morning and we will be able to tell you the base price for hogs for the day.

MELVIN M. LEHMAN - Owner
Danville Buying Station

Phone: 717-275-2880



EMERY'S BUYING STATION

OPEN TO RECEIVE
YOUR MARKET HOGS

AT THE GREEN DRAGON MARKET
RD 4, EPHRATA, PA 17522
1 MILE NORTH OF EPHRATA
ON NORTH STATE STREET.

HOURS: MONDAY, TUESDAY, and
WEDNESDAY 7:00 A.M. to 11:30 A.M.

215-458-5677 Residence
717-733-9648 Office

215-458-5677 Residence
717-733-9648 Office

YOU ARE PAID FOR YOUR
HOGS IMMEDIATELY

Ken & Lois Emery, Proprietors

SWINE PRODUCTION SALES AND SERVICE

Feeding Programs
And Services To
Meet Your Individual
Needs

Computerized
Record Keeping
System

Grain Purchasing
And Exchange

Supplying Farm Fresh
Feeder Pigs

Marketing and Hedging
Services

Marketing of Genesis
Breeding Stock

Developing Individual
Financial Programs



Quality Products And Services - Working For YOU

419 West High Street
Elizabethtown, PA 17022

Elizabethtown
(717) 367-1525

PA Toll Free
1-800-468-5524

Shippensburg
(717) 532-7845

PLEASE NOTE!

Change of Location to Home Farm
On Hill Rd. in Heated Shed

FRIDAY, MAR. 11 - 1:00 PM
ON THE FARM MONTHLY

BRED GILT SALE

Sale To Start Promptly Every 4 Weeks
Snow Date

Following Tuesday same time.

Located 4 miles east of former location, 1 mile off 472 midway between Quarryville & Oxford, PA, 1 mile south of Kirkwood, turn west off 472 at Union Church (Street Rd.) 1 mile to crossroad turn left, 2nd farm on right. Hill Road. Watch for sale signs.

Validated Brucellosis
Free Herd #169
Qualified Pseudorabies
Free Herd #55

50 to 60 Head
WHITE DIAMOND GILTS
Large White & Landrace, first
generation true F-1 gilts.
Parent stock originated from
Lieske Bros. Minnesota. Very
productive in litter size
and feed conversion.

Vaccinated for Lepto, Erysipias,
Rhinitis, E'Coll, Pasteueralla

Hand mated with Breeding Dates
Local Truck Available
No Hogs Sold On Commission

JOHN B. STOLTZFUS
R.D. 1, Kirkwood, Pa.
Abe Diefenbach, Auctioneer AU225L
NEXT SALE FRI., APRIL 8, 1:00 P.M.



STRIKE
IT
RICH!

SELL
IT
WITH
A

LANCASTER
FARMING
CLASSIFIED



HAY & STRAW

AUCTION
EVERY
THURSDAY
AT 1 PM

VINTAGE SALES
STABLES, INC.

10 miles East of Lan-
caster on Rt. 30,
Paradise, PA

717-442-4181 or
768-8204
L. Robert Frame, Mgr.

HAY & STRAW SALE

12:00 Noon
Every Wednesday
Westend of Avondale
at the intersection of
Baltimore Pike and
Route 41.

Harvey Z. Martin
215-268-3604
(Office)
215-445-5303
(Residence)