

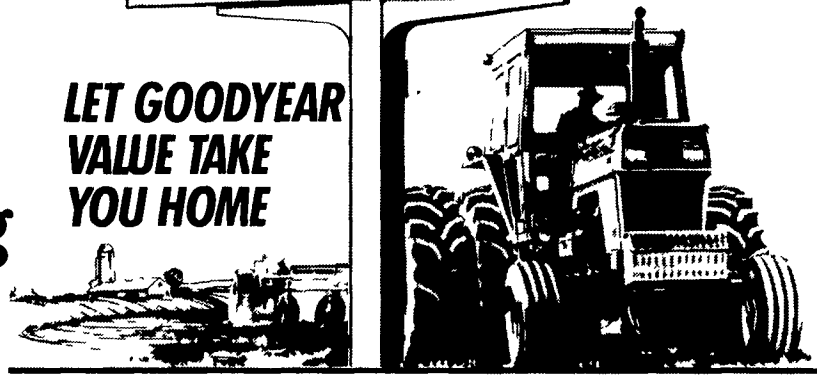


# The American Farmer & Goodyear

## The Partnership Continues Growing



LET GOODYEAR  
VALUE TAKE  
YOU HOME



112-24 4 Ply  
\$119.00

112-28 4 Ply  
\$129.00

124-28 4 Ply  
\$147.00

136-28 4 Ply  
\$163.00

155-38 6 Ply  
\$235.00

169-38 6 Ply  
\$310.00

184-34 6 Ply  
\$319.00

184-38 6 Ply  
\$359.00

184-38 8 Ply  
\$389.00

208-38 8 Ply  
\$519.00

The Hard-Working,  
Hard-Pulling Tractor Rear  
**DYNA TORQUE II**

- Excellent drawbar pull with long-bar, short-bar lugs for improved traction
- Designed for improved stability and roadability, plus reduced vibration
- Strong angle-braced lugs have self-cleaning design
- High-strength polyester cord body, and heavy duty rim shield protects tire from damage



Get the pull of your life with Dyna Torque Radial rears

### DYNA TORQUE RADIAL

- Revolutionary 3-lug per pitch design improves traction and ride
  - Computer designed "natural" shape casing improves tire body life
  - Radial construction provides better traction, lower fuel and overall costs
- 169R38 ★ \$439.00  
184R34 ★ \$418.00  
184R38 ★ \$488.00  
208R38 ★ \$668.00



We'll fix it in the field!  
Gold Star Pit Stop Service

On-farm tire service when you need us. Just give us a call and we'll be right there. You'll be back on the job in a flash!



**DYNA TORQUE RADIAL NO RISK OFFER**

Buy a pair of Dyna Torque radials now. If, after 90 days from day of mounting you are not completely satisfied with the performance of these tires, we will remove them and replace them with new Goodyear Dyna Torque bias ply tires of like size and ply rating and will credit you for the difference.

### FRONT TRACTOR

#### 3 Rib

- 600-16 4 Ply TT \$39.00  
600-16 6 Ply TT \$44.00  
650-16 4 Ply TT \$45.00  
650-16 6 Ply TT \$49.00

#### 4 Rib

- 750-16 6 Ply TT \$56.00  
95L15 6 Ply TT \$61.00  
11L15 6 Ply TT \$75.00  
11L15 8 Ply TT \$79.00  
1000-16 6 Ply TT \$79.00  
1000-16 8 Ply TT \$84.00  
1100-16 6 Ply TT \$98.00  
1100-16 8 Ply TT \$100.00

#### Dyna Rib Premium

- 14L-161 6 Ply TL \$194.00  
14L-161 10 Ply TL \$215.00

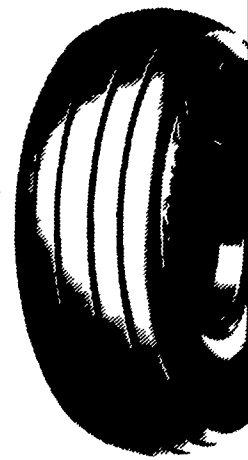
#### Our Newest Introduction In The R-4 Line INDUSTRIAL TORQUE RADIAL

- 175LR24 2 ★ TL \$356  
195LR24 2 ★ TL \$429



### Strong, Long Wearing FARM UTILITY TIRE FOR THE WAGON

- High flotation
- Heavy load capacity
- Rugged 3-T cord body



Size	Ply	Sale Price
96L14	TT 6	\$ 43.00
95L14	TT 8	\$ 47.00
95L14	TT 6	\$ 49.00
95L14	TL 8	\$ 51.00
760-15	TT 6	\$ 39.00
760-15	TT 8	\$ 43.00
760-15	TL 6	\$ 46.00
760-15	TL 8	\$ 48.00
95L15	TT 6	\$ 45.00
95L15	TT 8	\$ 48.00
95L15	TL 6	\$ 49.00
95L15	TL 8	\$ 52.00
11L15	TT 6	\$ 47.00
11L15	TT 8	\$ 49.00
11L15	TL 6	\$ 51.00
11L15	TL 8	\$ 53.00
12.5Lx15	TT 8	\$ 59.00
12.5Lx15	TT 10	\$ 69.00
12.5Lx15	TL 8	\$ 65.00
12.5Lx15	TL 10	\$ 75.00

See Your Independent Dealer For His Price And Credit Terms. Price And Credit Terms As Shown At Goodyear Commercial Tire Centers In All Communities Served By This Newspaper.

<b>Goodyear Commercial Tire Center</b> 165 Keystone Rd. Chester, PA 215-494-2160	<b>Horiacher &amp; Sherwood</b> 153 E. Tioga Tunkhannock, PA 717-836-1116	<b>Henry Tire Service</b> 3108 W. Mkt. St. York, PA 717-792-9779	<b>Automotive Service</b> 1350 Schuylkill Ave. Reading, PA 215-374-3414	<b>Goodyear Commercial Tire Center</b> I-81, Rt. 39 Harrisburg, PA 717-657-1005	<b>Goodyear Auto Service Center</b> 260 W. Hamilton Ave. State College, PA 814-238-4955	<b>P. Lebzelter</b> Rt. 72 & Lausch La. Lancaster, PA 717-569-3776	<b>Dices Tire Shop</b> 1421 Lincoln Way Chambersburg, PA 717-264-9312	<b>Martins Service</b> W. Main St. Waynesboro, PA 717-762-5913	<b>Sunbury Frame</b> 5th & Arch Sts Sunbury, PA 717-286-4921
<b>Melini Bros.</b> 3rd & Wood Sts. Vineland, NJ 609-691-3600	<b>Kirkwood Tires, Inc.</b> 1929 Kirkwood Hwy. Newark, DE 302-737-2460	<b>Klingerman Bros.</b> 555 E. 7th St. Bloomsburg, PA 717-784-4285	<b>Yoder Tire Service</b> RD #1 Towanda, PA 717-265-3635	<b>Troy Motor Co.</b> R 13-15 Canton St Troy, PA 717-297-3674	<b>Zimmerman Farm Service</b> School Rd Bethel, PA 717-933-4114	<b>Lebanon Valley Imp. Co.</b> 700 E. Linden St. Richland, PA 717-866-7518	<b>BHM Farm Equipment</b> RD 1 Rt 934 North Annville, PA 717-867-2211	<b>Shueys Sales &amp; Service</b> Jonestown Road Ono, PA 717-865-4915	<b>Umbergers of Fontana</b> RD #4 Lebanon, PA 717-867-5161