

**32 MISCELLANEOUS**

D69U oil clutch, good running condition, poor undercarriage, \$3,500. D7 pan tractor w/cable control unit, good running condition, undercarriage 80%, \$6,000. D717A, engine just majored, new steer clutches & brake, undercarriage 70%, Fleco cleaning cab, straight blade, Hyster wench, \$18,000. Ferguson 35 ton rubber tire roller, Detroit powered, good running condition, bad diff, \$4,500 215-869-8971

1956 utility Ford truck; 1971 Travelall V8, 1974 Int engine, 8 cylinder, 345 gas Make Offers 215-566-0967

600 Gal Tanker, \$700; 300 GPM Stowe Water Pump, Three 50' Nylon Hoses, One Suction Hose Evenings after 6 p.m. 717-627-2207

**HALF PRICE!** Flashing arrow signs, \$299! Lighted, non-arrow, \$289! Unlighted \$249! Free letters! Warranty See locally

Factory direct  
**1 (800) 423-0163**  
anytime.

**FOR SALE**

150 New Browning 4Q3V60 pulley - 4 groove \$3.50 each; 25 new Browning 6Q3V60 - 6 groove pulley \$4.75 each; 25 new - 2 BK47H Browning pulley - 2 groove - \$6.75 each; 40 new Browning AS-44-1/2 pulley - single groove \$2.75 each; 104 pcs. 3 1/2" O.D.x3/8" wall seamless steel tubing x 8 1/2" long \$1.25 each; 3 pcs. 3 1/2" O.D.x3/8" wall seamless steel tubing x 20' long \$3.25 per ft.; 12 pcs. 3 1/2" O.D. x 1/8" wall x 20' long aluminum pipe \$1.25 per ft.; 4 - Pierce-All H.D. 3 1/2" C-frame uninitialized tooling holders - 12" throat \$100.00 each; Heavy 1" wide strapping unit w/tools & cart \$75.00. Custom shearing to 3/8"x10' custom forming to 225 ton, custom punching to 120 ton. Machine and lathe work and fabrication.

**FARM-BILT MACHINE**  
68 South Weavertown Road  
Ronks, Pennsylvania 17572

**34 AUTOS**

For Sale 1968 Benz, 250S, body good Needs some repair 6 cyl, gas, \$500 717-286-9380, Northumberland Co

For Sale 1957 Plymouth Belvedere 2 door, hardtop, V-8, good body, engine, \$600 OBO 717-286-0825, Northumberland Co

- 1977 Chevy Corvette, loaded, \$9,000
- 1984 Chevy Silverado Truck, loaded, \$6,500
- 1987 Chevy Camaro, \$8,500
- 1981 Mercury Lynx, \$1,200
- Single Axle Dump Truck, \$1,000

**YOUR AUTO AUCTION, INC.**  
Public & Dealers Welcome  
Every Thursday Night - 7 P.M.  
For more info. call **717-865-4145**

**35 TRUCKS & TRAILERS**

Heavy duty trailer, all steel, 8' wide, 16' long, electric brakes, 4 1/2 - 5 ton capacity, 2-axle, ready to go 215-593-5754

1978 Chev C60, V8, PS, 5 speed, has new 14' grain dump body, extra clean, \$6,500 Wayne Co 717-253-4606

1979 Ford F250 3/4 ton pickup, \$3,250. Martin Hardware & Equipment Co 717-949-6817

Baughman 12' Spreader Body w/ground wheel drive & Stoltzius spreader booms, \$800 703-837-1305

Complete wetline kit, air shift \$700, 17' grain bed \$550 814-793-2339

For Sale Transfer Trailers, all sizes, Demolition Dumps, Used trucks, dumps, grain dumps, roll-backs & log trailers. Keith walking floors, sold & serviced 814-623-9696 or 814-623-8696

**Meat Band Saws, Grinders, Slicers and Tenderizers. Also New Splitting Saws for only \$249.00. Gerry Grundy Doyleburg, PA on Rt. 75 at Rt. 274. Open Sat. & Sun. 10 A.M. - 4 P.M. (717) 349-7654 or eve call (215) 549-7584**

12' S.S. double sink w/ sprayer  
2 Formica counters  
Cash register  
Small walk-in cooler  
48' continuous Pinna-cle case  
20' chicken/Fish Case  
24' Hill Self Serve Freezer  
5 Rod Barbecue Chick-en Machine  
(2) Kelvinator Ice Cream Freezers  
Butcher Boy 17" Meat Saw  
SS Globe Meat Slicer  
12' SS Table  
(4) Hobart Electronic Scales  
For more information call  
**215-298-2888**

**33 RECREATIONAL VEHICLES**

'87 Suzuki 250 quad racer, excellent condition, never raced Reasonably priced After 5PM, 717-437-2750

For Sale. Honda MC CR125, like new, never raced 215-932-5014 after 6

Wanted to Buy A motor home with low mileage Call 717-367-2362

**35 TRUCKS & TRAILERS**



**USED GOOSENECK TRAILERS**

- 1986 Eby - 24'x8'x6'6" Hydraulic Brakes
- 1986 Eby 18'x8'x7' Hydraulic Brakes
- 1983 Eby 30'x8'x6'6" Hydraulic Brakes, Tandem Duals
- 1979 Eby 24'x8'x6'6" Electric Brakes

**3 NICE STEEL TRAILERS**

- 1983 Montz 16'x7'x6'
- 1981 Valley 18'x6'6" x6'
- 1977 Cherokee 18'x6'6" x6'

**USED EBY ALUMINUM LIVESTOCK BODIES SALE**



- 8' Hewey Aluminum 6' Height, 56" C A
- 22' Wilson Aluminum 6'6" Height
- 26' Eby Aluminum 7' Height Deck Rail 1/2 Decking
- 27' Eby Aluminum 8' Height Full Deck, Ramps

M.H. EBY, INC.  
P.O. Box 127  
Blue Ball, PA  
17506  
(717) 354-4971

**35 TRUCKS & TRAILERS**

ENGINE Cummins PT 270 dsl complete, one set tandem pulling rears w/5.88 ratio 703-338-6028

For Sale 14'6" flatbed with grain sides and cattle sides 301-329-6757

'87 Chevy C20 HD 3/4 ton, 4x4, 350 FI, auto, PB, PS, AM-FM, 8,600 GVW, 17,000 miles, like new, \$12,700 717-733-2873

'68 DM Mack T/A Dump, 237 20 spd, 55 rears, '80 Ford L/N 700, 370 V2, 5 spd, 2 spd, PS, AB, C/C, 24,000 GVW, \$5,500.; '81 GMC 6500, 366 5 spd., 2 spd., PS, AB, C/C, 27,000 GVW, \$5,500 215-944-9871 after 6 p.m.

'68 Ford F700, 16' grain dump, good condition \$3800 814-793-2339

'87 Ford XLT Lanat F250, 4x4 Super Cab, 6.9 diesel, 4 spd, PS, PB, PW, PDL, cruise, tilt, air, AM-FM cassette stereo, dual tanks, lock out hubs, 8,800 GVW, 7,000 miles, blue & silver, \$16,500 717-733-2873



1975 White Road Boss  
290 Cummins, 10 speed, T/A, runs excellent  
1970 Fruehauf 28' alum. dump trailer  
**609-466-1069**

**USED TRUCKS**



'83 Ford F-250, Heavy Duty, XLT, 460, Auto, PS, PB, AC, Tilt Wheel, Cruise, Dual Fuel Tank, Rear Sliding Window, 35,000 Miles. \$8,900

**MARTIN'S AUTO SALES**

725 E. Main St., New Holland, PA 17557  
**(717) 354-9967**

'86 Ford F150 Super Cab pickup, 300 6 cylinder auto, PB, PS, air, cruise, AM-FM, dual tanks, excellent condition, \$8,950 717-733-2873

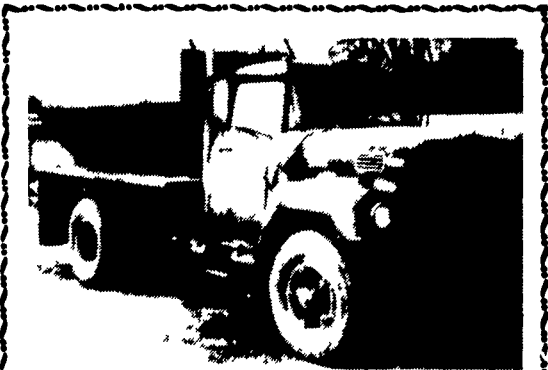
New 454 & 366 Chevy motors, \$1,500 each 717-762-7940

Rollback 1977 Int cabover, gas, 21', 5-2, 26,000 GVW, nice \$10,000 OBO Would consider part trade 717-369-4765

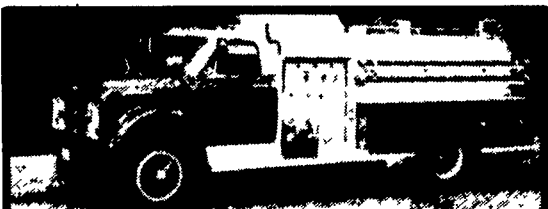
'86 Chevy C30 w/8' Omaha standard dump, 350 4 spd, PS, PB, 11,000 miles, excellent condition, \$13,500 717-733-2873

'86 Chevy C20, 3/4 ton, 305 auto, PB, PS, AM-FM, 7,200 GVW, new radials, excellent condition, \$7,950 717-733-2873

'86 Ford F150 HD, 3/4 ton, 300 6 cyl, 3 spd overdrive, PS, PB, 6,250 GVW, 11,000 miles, like new, \$7,800 717-733-2873

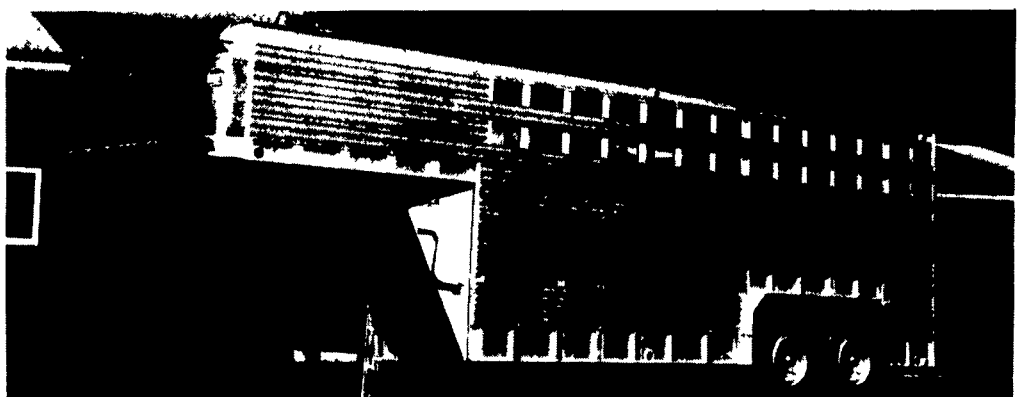


**For Sale:**  
2000 Int. with 238 Detroit engine with 12 foot new leader lime spreader, working condition.  
Price: \$3,500.00  
Call **717-624-2233**



**FOR SALE BY SEALED BID**  
1970 Chevrolet High-Pressure Fire Truck. Could be used for washing down hog & chicken houses. 14,600 original road miles. Bids accepted til April 1, 1988. Write For Bid Sheets:  
**Keystone Fire Co.**  
c/o John Brown III  
11 1/2 W. Carpenter Ave.  
Myerstown, Pa. 17067  
Call after 5 P.M. for info:  
**717-866-4110.**

**EBY ALUMINUM GOOSENECK TRAILERS**



**20' Gooseneck Trailer**

A versatile, lightweight, Eby aluminum stock trailer is built to provide years of maintenance free service. An Eby trailer is custom built to fit your individual hauling needs - No mass production! We use only quality components and strong alloy aluminum to manufacture what may be the last trailer you'll ever buy

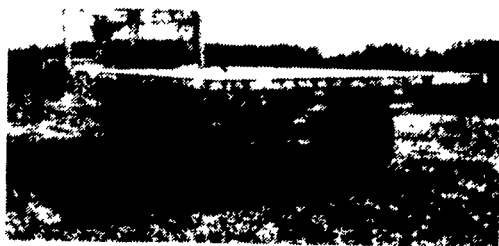


**IN STOCK NEW**

- (1) 20'Lx8"Wx6'9"
- (1) 18'Lx8"Wx6'9"
- (1) 16'Lx7 1/2"Wx6'9"

All Wrangler Models w/Electric Brakes

- **LIGHTWEIGHT** - Eby stock trailers are 25-35% lighter than comparable steel trailers. Less weight means better fuel mileage or **increased** payload.
- **MAINTENANCE** - Eby aluminum trailers won't rust. Welding and painting can cost you dollars in down time and repairs
- **DURABILITY** - Eby trailers are built tough. Quality components and 6061 alloy aluminum provide the ruggedness required in a livestock trailer



20' Gooseneck Trailer With 6000# Winch \$2,600.00 With 3 Axle.  
**301-833-9091**

**M.H. EBY, INC.**  
Box 127, Blue Ball, PA 17506

717-354-4971