



HAY MARKETS

Pa. Grain

Monday, Feb. 8, 1988

Report supplied by PDA

COMPARED WITH LAST MONDAY'S MARKET FOR SOUTHEASTERN, CENTRAL AND SOUTH CENTRAL PA.: CORN MOSTLY STEADY TO .08 HIGHER; WHEAT UNEVEN, MOSTLY STEADY TO WEAK; BARLEY STEADY; OATS, AND EAR CORN STEADY TO STRONG.

SOUTHEASTERN PENNSYLVANIA

CORN NO. 2-Y RANGE 2.15-2.35, AVERAGE 2.25; *CONTRACT FOR HARVEST 2.08-2.34; @WHEAT NO. 2 RANGE 3.20-3.55, AVERAGE 3.37; *CONTRACT FOR HARVEST 3.10-3.34; BARLEY NO. 3 RANGE 1.70-1.85, FEW REPORTED 1.40, AVERAGE 1.71; *CONTRACT FOR HARVEST 1.30-1.50; OATS NO. 2 RANGE 2.00-2.35, AVERAGE 2.15; *CONTRACT FOR HARVEST 1.20; SOYBEANS NO. 1 RANGE 5.95-6.23, AVERAGE 6.04; *CONTRACT FOR HARVEST 6.00-6.23; *GR. SORGHUM #2 RANGE 1.90, AVERAGE 1.90; *CONTRACT FOR HARVEST 1.90; #EAR CORN RANGE 55.00-76.00, AVERAGE 63.00.

CENTRAL PENNSYLVANIA

CORN NO. 2-Y RANGE 2.00-2.20, AVERAGE 2.14; @WHEAT NO. 2 RANGE 2.80-3.50, FEW REPORTED 2.55, AVERAGE 3.00; BARLEY NO. 3

RANGE 1.30-1.75, AVERAGE 1.36; OATS NO. 2 RANGE 1.80-2.10, AVERAGE 1.96; SOYBEANS NO. 1 RANGE 5.50-6.30, AVERAGE 5.93; *GR. SORGHUM #2 RANGE 1.90, AVERAGE 1.90; #EAR CORN RANGE 51.00-63.00, AVERAGE 57.10.

SOUTH CENTRAL PENNSYLVANIA

CORN NO. 2-Y RANGE 2.00-2.35, AVERAGE 2.20; @WHEAT NO. 2 RANGE 2.60-3.40, AVERAGE 2.86; BARLEY NO. 3 RANGE 1.45-1.85, AVERAGE 1.67; OATS NO. 2 RANGE 1.70-2.20, AVERAGE 1.98; *SOYBEANS NO. 1 RANGE 5.60-6.00, AVERAGE 5.80; *EAR CORN RANGE 55.00-70.00, FEW REPORTED 80.00, AVERAGE 66.00.

WESTERN PENNSYLVANIA

CORN NO. 2-Y RANGE 1.80-2.10, AVERAGE 1.99; @WHEAT NO. 2 RANGE 2.40-3.30, AVERAGE 2.93; OATS NO. 2 RANGE 1.75-2.10, AVERAGE 1.94; SOYBEANS NO. 1 RANGE 5.90; *EAR CORN RANGE 55.00, AVERAGE 55.00.

SOUTHEASTERN, CENTRAL & SOUTH CENTRAL SUMMARY

CORN NO. 2-Y RANGE 2.00-2.35, AVERAGE 2.20; @WHEAT NO. 2-Y RANGE 2.70-3.55, AVERAGE 3.08; BARLEY NO. 3 RANGE 1.40-1.85, AVERAGE 1.64; OATS NO. 2 RANGE 1.80-2.25, AVERAGE 2.03; SOYBEANS

NO. 1 RANGE 5.60-6.30, AVERAGE 5.97; *EAR CORN RANGE 53.00-76.00, AVERAGE 61.73.

MONTH AGO

CORN NO. 2-Y RANGE 2.12; @WHEAT NO. 2-Y RANGE 3.06; BARLEY NO. 3 RANGE 1.64; OATS NO. 2 RANGE 2.00; SOYBEANS NO. 1 RANGE 5.87; *EAR CORN 59.26.

YEAR AGO

CORN NO. 2-Y AVERAGE 1.78; @WHEAT NO. 2-Y AVERAGE 2.69; BARLEY NO. 3 AVERAGE 1.45; OATS NO. 2 AVERAGE 1.59; SOYBEANS NO. 1 AVERAGE 4.77; *EAR CORN AVERAGE 52.46.

Regional Hay

February 8, 1988

Eastern, Pa.

On-Farm Sales

HAY & STRAW MARKET FOR EASTERN PA. (ALL HAY NO. 2 AND BETTER, PRICES PAID BY DEALERS AT THE FARM & PER TON.) HAY AND STRAW SLOW, STEADY TO WEAK. ALFALFA 80.00-110.00; MIXED HAY 60.00-90.00; TIMOTHY HAY 70.00-85.00; STRAW 55.00-80.00; MULCH 30.00-45.00.

LANCASTER CO. AUCTIONS

SUMMARY OF LANCASTER CO. HAY AUCTIONS FOR WEEK ENDING 2/5/88. PRICES PER TON: LOADS: 274 HAY, 98 STRAW, AND 33 EAR CORN. ALFALFA 84.00-142.00; MIXED HAY 69.00-145.00; TIMOTHY HAY

69.00-145.00; STRAW 71.00-103.00; EAR CORN 70.00-85.00.

CENTRAL PA. HAY AUCTIONS

SUMMARY OF CENTRAL PA. HAY AUCTIONS FOR WEEK ENDING 2/5/88. PRICES PER TON: LOADS: 216 HAY, 64 STRAW AND 8 EAR CORN. ALFALFA 75.00-135.00; MIXED HAY 50.00-110.00; TIMOTHY HAY 60.00-92.50; STRAW 52.00-85.00; EAR CORN 67.50-80.00.

Westminster Hay

Westminster, Md.

Tuesday, Feb. 9, 1988

Report Supplied by Auction

75 LOADS. MARKET PRICES SEEMED TO BE LOWER. STRAW, STEADY.

ALFALFA, GOOD TO VERY GOOD, 91.00-125.00; FAIR TO GOOD, 62.00-89.00; FAIR, 45.00-55.00; WITH MOLD, 35.00-38.00.

ALFALFA MIX, 68.00-95.00, 1.40 BALE; TIMOTHY HAY, 50.00-90.00, .60-.75 BALE; TIMOTHY MIX, 50.00-66.00, 60-1.10 BALE; STRAW, 52.00-71.00, SOME BY THE BALE FROM .75-1.35.

GRASS HAY, 51.00-62.00, BIG ROUND BALES, 40.00-41.00.

OATS, GRAIN, 2.00-BU.; WOOD, HARDWOOD, 68.00-71.00 CORD; MIXED WOOD, 31.00-46.00 CORD.

Green Dragon Hay

Ephrata, Pa.

Friday, Feb. 5, 1988

Report Supplied by Auction

160 LOADS. MIXED HAY, 69.00-135.00; TIMOTHY, 69.00-125.00; ALFALFA, 59.00-149.00; CLOVER, 76.00; ORCHARD GRASS, 75.00-103.00; CORN, 61.00-86.00; STRAW, 61.00-86.00; OATS, 1.90-2.40 BU. WOOD, 40.00 LD.

New Holland Hay

New Holland, PA

Monday, Feb. 8

Report Supplied by Auction

254 LOADS. ALFALFA, 77.00-136.00, 1 AT 142.00, 1 AT 160.00; MIXED HAY, 72.00-135.00, 1 AT 140.00; TIMOTHY, 70.00-124.00, 1 AT 130.00 AND 1 AT 177.00.

CLOVER, 75.00-85.00; ORCHARD GRASS, 84.00; STRAW, 74.00-88.00; EAR CORN, 60.00-85.00; OATS, 2.50 BU.

Belleville Hay

Wednesday, Feb. 10

Belleville, PA

Report Supplied by Auction

72 LOADS HAY. ALFALFA, 77.50-122.50; MIXED HAY, 42.50-75.00; 20 LOADS STRAW, 55.00-85.00. ONE LOAD EAR CORN, 70.00.

HOSTETTER PORK



Wanted To Buy Crippled and Disabled Sows and Boars

Hogs Slaughtered For Federal Inspection
PHONE 717-274-7609

Seeking Profits In Commodities Trading?

- Hedging
- Speculating
- Managed Account
- Commodity Options

Call Forney Longenecker, Commodities Investment Executive, At (717) 295-8914

SHEARSON LEHMAN BROTHERS
29 E. King St.
Lancaster, PA 17603



HERE TO STAY!

MAKE 1988 THE YEAR TO GET ACQUAINTED WITH NEW HOLLAND SALES STABLES, INC. - THE ACTION AUCTION

MONDAY

FAT HOGS



EARLY BIRD HOG SALE

7:30 AM
For Your Protection Your Hogs Must Be Identified

10:00 AM

HORSES MULES



11:00 AM



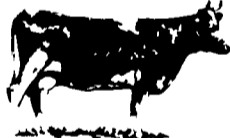
HAY
STRAW
GRAIN



1:30 PM
BEEF SALE
CALF, SHEEP,
GOATS

WEDNESDAY

DAIRY COWS



HEIFERS, BULLS

NEW HOLLAND SALES STABLES, Inc.

12 Miles East of Lancaster
on Route 23, New Holland, Penna

The Action Auction
717-354-4341

Mgr - Abe Diffenbach - 717-393-4464
Norman Kolb - 717-397-5538

Field Representatives
Alan Diffenbach 717-656-9806
Luke Eberly 215-267-6608 - 738-1865

WEDNESDAY - 1:30 P.M. FEEDER PIG SALE



THURSDAY

10:00 AM

BULLS -



STEERS -
BEEF COWS

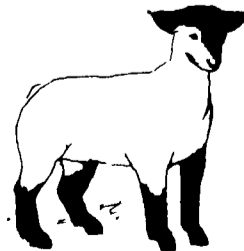


1:30 P.M.

CALVES



SHEEP
GOATS



We endeavor to keep our barns cleaner than yours. State graded until 12 Noon

Market your livestock thru New Holland Sales, your neighbor does
Pick-up your check before you leave