

Chester Co. DHIA



Monthly Report

Dec. 1987

The cow with high fat was owned by Dunwood Farm.
The cow with high milk was owned by Samuel K. Stoltzfus.

Rolling Herd Average

Name	Brd.	No. Cows	%-Days In Milk	Milk Lbs.	3 X	Fat Lbs.
Melwood Farm	3	40.0	87.5	25,138	0	943
Dunwood Farm	3	59.4	85.6	21,422	0	830
Chris&Ches Stoltzfus	3	53.0	89.7	21,157	0	825
Ardrossan Farms	1	124.3	88.1	19,741	0	823
H&R Mason	3	145.9	88.7	21,108	0	808
Richard Hostetter	B3	42.8	86.9	21,822	0	790
New Bolton Ctr Unit4	B3	43.0	85.1	20,888	0	786
John S Stoltzfus	3	72.2	89.0	20,053	0	781
Vernon Guest & Son	B3	91.9	87.2	19,656	0	772
David K Stoltzfus	B3	45.7	86.6	20,265	0	767
J Harold Bare	3	72.1	87.3	20,367	0	762
Ken+Marilyn Umble	3	57.5	89.9	20,506	0	762
Harold J Ranck	3	57.3	86.0	19,682	0	761
Mark&Melody Stoltzfs	B3	57.5	85.5	20,361	0	755
Calvin + Tim Kurtz	B3	83.2	86.1	21,261	0	752
Glen H Freese	3	65.8	85.3	21,082	0	751
Robert E Pepple	3	65.9	87.5	19,793	0	751
Joseph Lusby	3	62.9	84.1	20,186	0	749
Pei-Valley Farm	B3	84.1	89.0	19,164	0	746
Ben Beiler & T Barlow	3	89.8	88.1	19,499	0	745

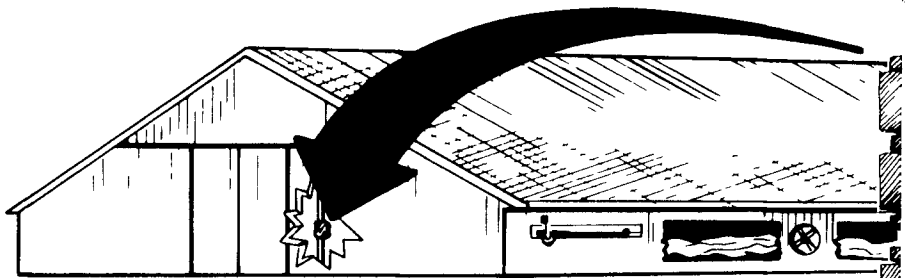
Breck-A-De Farm	3	85.2	86.5	20,490	0	739
Donald Hostetter Jr	3	86.9	87.8	19,839	0	738
Maplesway Farm	3	68.6	88.6	19,972	0	738
Gerald L Kulp	B3	85.7	88.5	20,387	0	737
Thomas C Kearns	B3	40.8	87.8	19,810	0	735
Timberview Farm	3	57.3	88.4	18,188	0	735
Ridglea Farm	3	92.3	86.2	18,295	0	735
Paul King	3	59.9	87.8	19,431	0	733
Paul Martin	B3	62.7	86.2	21,906	0	730
George P Lamborn	3	36.0	89.3	20,213	0	729
Arthur+Dwane Hershey	3	53.3	84.0	20,620	0	726
David F King	B3	57.5	88.1	19,907	0	722
Joy-Wil Farms	B3	123.8	85.3	19,600	0	721
Mrs John B Hannom	B3	92.7	87.5	20,298	0	721
Star Point Holsteins	B3	68.8	90.0	20,285	0	718
Dale Hostetter	3	51.0	87.0	20,038	0	717
Daniel R Stoltzfus	B3	37.4	86.8	20,021	0	716
Samuel K Stoltzfus	3	45.4	88.3	19,361	0	716
Herman Stoltzfus	3	54.4	86.9	19,966	0	716
Kevin Stahlnecker	B8	43.9	82.5	18,402	0	714
Landis S Reid	B3	65.1	85.2	19,899	0	714
Roy+Ruth Ann Bender	B3	63.7	83.2	20,246	0	713
Spring Aqua Farm	3	87.1	89.1	19,726	0	712
Charles-Don Gable	1	72.4	84.0	16,252	0	706
Merle J King	B3	104.5	84.6	19,535	0	705
J Elvin Ranck	B3	30.9	87.8	19,873	0	705
William L Stoltzfus	3	53.0	88.2	18,908	0	704
Duane&Carolyn Eberly	B3	63.2	89.5	19,176	0	703
Benjamin K Kaufman	B3	44.3	90.8	19,380	0	703
Carl+Darlene Eberly	G3	37.2	88.2	19,265	0	702
Lester Eby	3	64.5	83.7	19,123	0	702
Floyd Miller & Sons	B3	69.9	88.4	18,757	0	698
Jesse E Lair	G3	82.4	85.0	19,644	0	698

Lancaster Farming, Saturday, February 13, 1988-E7

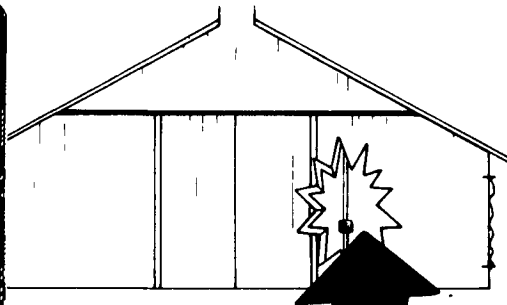
Rocky-Side Farm	3	67.4	86.8	18,143	0	696
Susan Weaver	3	93.3	85.7	18,029	0	694
Sam+Marian Stoltzfus	B3	37.5	87.2	19,461	0	694
Daniel M Stoltzfus	B3	50.6	83.4	18,425	0	693
David&Dawn Windle	3	56.1	85.0	18,744	0	693
John K Kauffman	B3	37.3	86.3	19,476	0	692
Lloyd Mast & Sons	3	128.1	86.7	17,899	0	691
Elvin R + Carol Mast	B3	92.6	87.4	17,972	0	689
Meadow Oak Farm	B3	49.5	86.4	18,865	0	687
Mast Stoltzfus	3	51.1	88.1	18,148	0	684
David Bartram	B3	118.1	87.5	18,634	0	683
Amos K Kauffman	3	42.5	86.8	19,489	0	678
Donald M Horning	B3	53.6	84.9	19,005	0	676
Walmoore #3	B3	144.3	89.4	17,917	0	674
Amos J Stoltzfus	3	48.8	82.2	17,949	0	674
J Elmer Lapp	3	39.0	86.9	18,671	0	672
Leon D Kurtz	3	41.1	84.8	19,134	0	667
Calvin R Blank	B3	56.8	89.4	18,463	0	664
George Strutyanski	B3	90.6	85.7	17,221	0	662
Jonas K King	B3	48.6	86.1	19,093	0	661
Richard Hoover	B3	124.2	86.0	17,214	0	659
E Kent High	G3	137.6	91.1	18,324	0	656
Harold R Kulp	B3	77.5	86.9	17,756	0	655
Wye Brooke Farm	B8	63.4	81.9	17,787	0	654
Abner R King	B3	37.7	84.4	17,133	0	653
Dennis Bush	G3	124.2	86.2	17,241	0	651

Dunwood Farm	Jenny	3	5-5	305	26,725	4.7	1258
	Melody	3	5-10	305	27,143	3.8	1044
	Lynn	3	3-7	305	19,650	4.4	882
	Marble	3	2-7	305	23,796	3.4	815
Joseph Lusby	Pansy	3	5-4	305	28,222	4.0	1136
	Segis	3	7-2	305	25,160	3.7	940
Harold J Ranck	Regal	3	7-4	305	27,088	4.1	1135

(Turn to Page E10)



Total environment control for *new* and *existing* barns . . .



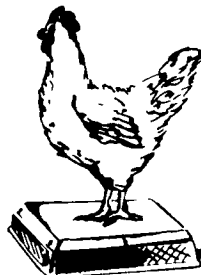
began four years ago in our facilities. Our poultry research team

began by testing the Zone Station environmental control system under actual operating conditions on our birds.

The Zone Station has proved to be a reliable unit. It is equipped with the necessary safeguards, automatic alarms and backups to provide safe and effective control for your investment - your birds.

Designed to be easy to operate in the barn, the Zone Station System provides complete control and monitoring of your flock's vital statistics. Easily adapted to work with your current environmental control system, it is designed to work in your existing structures. And it can be tied into our Total Environment Plus system for complete barn management.

For a limited time, we are making a special introductory offer of PAL-TECH's new Zone Station System. For more information about this special offer or an information kit, please call Larry Pluta in Lancaster, PA at 717-394-7567.



Roost Scale

PAL-TECH™

369 County Road 5 S.W.
W. Hwy. 12, Box 753
Willmar, Minnesota 56201