

Visit The
Agri-Equipment
Booth At:

KEYSTONE PORK CONGRESS

TUESDAY, FEBRUARY 16, 1988

We Can Help In Designing Your Hog Unit, Whether You're
Planning A New Project Or Updating Your Existing Unit

FLEX AUGER

CHORE-TIME FEED DELIVERY SYSTEM

Highly energy-efficient, extremely long wearing and trouble-free — that's how FLEX-AUGER systems are known the world over.

For most livestock and poultry feeding installations, plus for moving high or low moisture grain, FLEX-AUGER is the ideal choice.



5 MODELS
AVAILABLE
FROM
15 LBS./MIN.
TO
220 LBS./MIN.

CHORE-TIME

Combats Corrosion



RLX Fan

The fan to choose where long fan life is desired. Tough, dense RLX housing is made of multi-layer, laminated material (same as truck fenders and canoes are made of). Can't corrode. Won't splinter like fiberglass, even in sub-zero weather.

Available In:
8", 14", 18", 24"
Diameters

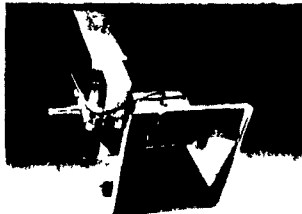
FILTER-EEZE® D2700 DELUXE SOW SLAT

- 10 year guarantee (5 unconditional and 5 pro-rated)
- 2" thick
- 27% opening - 3/8" wide slot openings
- Polypropylene - will not conduct heat or cold
- 12"x24" size - 2 sq. ft.
- Support every 24"
- Wt. 5 lbs. per section

D3700 DELUXE NURSERY SLAT

- 10 year guarantee (5 unconditional and 5 pro-rated)
- 2" thick
- 37% opening - 7/16" wide slot openings
- Polypropylene - will not conduct heat or cold
- 12"x24" size - 2 sq. ft.
- Support every 24". Wt. 4 lbs. per section

SBM INFRARED HEATING, INC.

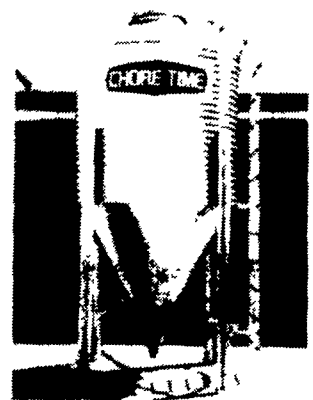


LP GAS HOG BROODERS

5 Models To
Choose From...
2,200 BTU
to
14,000 BTU

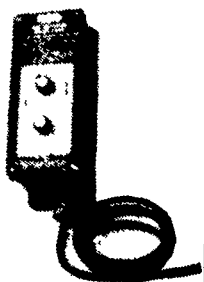
Save Energy With
These Efficient
Radiant Heat Brooders

CHORE-TIME

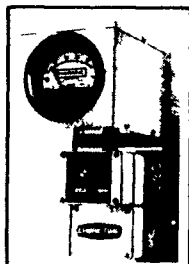


Completely Galvanized,
Weatherproof Bins
SUPER FEEDING
Starts With The Bin

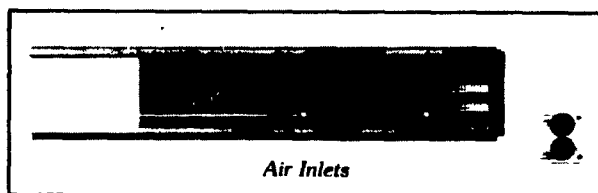
advanced
ventilation
systems



Model 730
Fan Control



Inlet Control



Air Inlets

Chore-Time's Advanced Air Systems offer you a fully automatic static pressure system for controlled environment houses. A complete Chore-Time system includes fans, automatic fan controls, self-adjusting air inlets, and inlet control mechanism.

AGRI-EQUIPMENT ALSO OFFERS THE FOLLOWING EQUIPMENT:

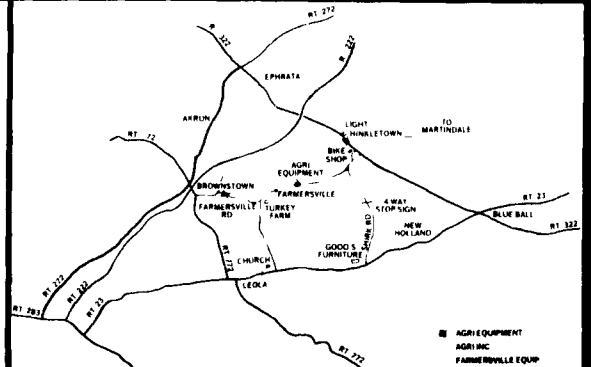
- Chore-Time Air Systems
- Chore-Time Flex-Augers & Bins
- Shenandoah Hog Feeders
- Modern Ag Hog Feeders
- Chore-Time Sow Auto. Drop Feeding System
- Hurst Galv. Fencing & Stalls
- Scraper Systems
- SBM Infrared Brooders
- Woven Wire Flooring
- Filter-Eeze Flooring
- Chemilizer Medicators
- Nipple Waterers

Authorized Chore-Time Distributor

AGRI-EQUIPMENT, INC.

RD 4, East Farmersville Rd., Ephrata, PA 17522
(Lancaster County)

717-354-6520



AGRI-EQUIPMENT
AGRI-INC
FARMERSVILLE EQUIP

COMPLETE SYSTEMS
& EQUIPMENT SALES
FOR CATTLE, HOGS
& POULTRY

HOURS:
7:30 AM - 4:30 PM