

4-H Chick Project Hatches New Life, New Behavior

BY HERBERT C. JORDAN
Associate Professor
Of Poultry Science
Penn State

Hatching chicks in the classroom is an amazingly winning project, say parents and teachers who've experienced it. Now, 27,309 students and 780 teachers participate in Embryology projects yearly in Pennsylvania.

While watching new life make its appearance in the world, the students alter their own life patterns. Imagine an 11-year-old completing a 21-day project in the classroom that improves the child's attitude, behavior and scholarly endeavor.

Teachers report that when a class finishes the 4-H embryology project, 10 percent to 20 percent of

the students have improved their behavior. Teachers observe, during the course of the project, that troublesome children stop fighting and become cooperative; bullies settle down and behave as model students, giving attention to the teacher; children with excess energy spent in mischief turn to work in school; youngsters with criminal records begin to behave and look forward to the care of the fragile, young embryos as the eggs are turned three or five times (necessarily an odd number) a day in the incubator.

Further, teachers note that slow learners, mentally retarded or emotionally withdrawn children begin to share and participate in class. School nurses notice less child illness and fewer absentee-

ism among all students when chicks are about to hatch.

All students pay attention to the needs of the young lives in the incubator, and school work becomes enjoyable. Parents, teachers and students begin to share the excitement of chick-hatching day when they will see the awesome wonder of new life that grew 155,000 times its original weight in 21 days, from fertilized egg cell to chick.

Four primary requirements for the classroom project include:

1. An incubator that functions and hatches well.
2. A source of normal, clean, fertile eggs from a healthy, blood-tested flock of breeder chickens, such as Single Comb White Leghorns, that produce vigorous chicks.

A hatchery list is available through your County Extension Office.

3. A competent, well-trained person who will manage the incubator, care adequately for the eggs and chicks, and who will be observant to problems if they should occur.

4. A number of students that can be managed, educated and handled easily.

If the above requirements are

met, the only remaining need is a creative teacher who will enroll 4-H members in this project and complete a lesson plan of knowledge to be learned and experiences gained from hatching eggs.

The 4-H agent at your County Agricultural Extension Service Office can provide more information, and an embryology leader will instruct teachers in project details.

New Nitrogen Additive Protects Groundwater

SHAKOPEE, MN. — Conklin Company, Inc. is introducing Guardian™, a product revolutionary for the nitrogen fertilizer market. Guardian is a nitrogen fertilizer additive containing 66% nitrogen in a slow-release form, which will help curb groundwater contamination while increasing yields.

Groundwater contamination may be the most significant issue of the decade related to agricultural production. Applied nitrogen can leach out of the soil and cause nitrate contamination in ground-

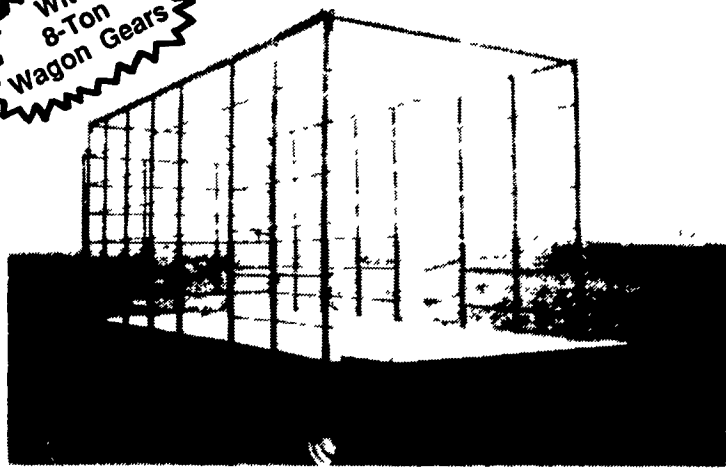
water supplies. A growing number of cities in southwestern Minnesota have nitrate contamination in their municipal water supplies. Public concern is rising over possible health effects of nitrates in groundwater.

Packaged in 50-pound bags, crystalline Guardian can be mixed with either liquid nitrogen solutions, suspensions or liquid manure, and can be applied in the fall or spring. It is the only product of its kind currently available direct to farmers for on-farm use.

HAY WAGONS FOR SALE

STEEL SIDES

With 8-Ton Wagon Gears



3 Sizes Available...16', 18', 20' with or without running gear

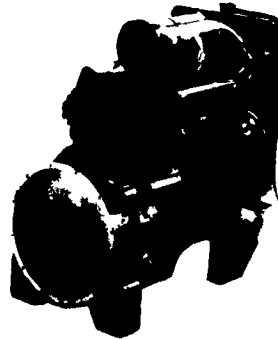
• Also will fit sides onto your flat wagon

MFD. BY: **STOLTZFUS WOODWORK**

Rt. 897 North — Gap, PA 17527
717-442-8972

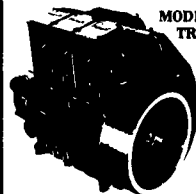


THE FRONT LINE IN DIESEL POWER



THE COMMANDERS

NEW WATER-COOLED DIESELS
34 to 132 H.P. in 3, 4 and 6 Cylinders



Air Cooled 2 & 3 Cylinders



GIVE US A TRY! CHECK OUR PRICES
DIESELS OUR SPECIALTY
Let Us Know Your Service Problems

AUTHORIZED LISTER-PETTER DISTRIBUTOR
HOOVER DIESEL SERVICE

Main Location
(717) 656-3322
(717) 295-1729
255 Mascot Rd.
Ronks, PA 17572

Branch Location
(717) 786-2173
313 Furnace Rd.
Quarryville, PA 17566



See Us For The FINEST QUALITY SEEDS At The BEST PRICES

ALFALFAS

WL 316	Big Ten	Vernal
WL 320	Edge	Buffalo

CLOVERS

Arlington	Medium Red
-----------	------------

HAY MIXES TO ORDER

SOYBEANS

Williams 82
Amcor Pella

OATS

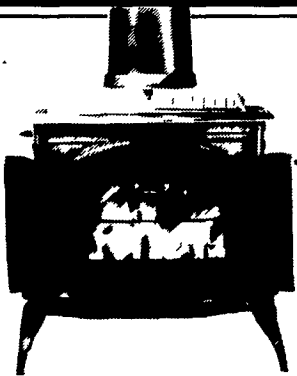
Ogle
Noble

FREE MIX AND INOCULATION FOR CLOVER AND ALFALFA

REIST SEED COMPANY

Finest Seeds (Since 1925)
Mount Joy, PA (717) 53-4121

A CURE FOR THE COMMON COLD



Winter is easy to forget, once its over. But it won't be long before cold weather sets in again. This year, don't be left out in the cold. Break the spell of winter with a FirePlace by Vermont Castings. There's nothing quite like the pleasure and comfort you'll get from the soothing warmth of a crackling fire in a handsome cast iron Vermont Castings' FirePlace. It's a sure cure for the common cold. Stop by today and see our complete line of Vermont Castings' products:

MOST MODELS IN STOCK
WE DELIVER & INSTALL
WINTER PROMOTION

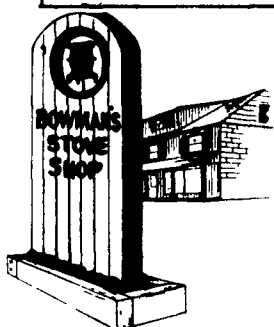
\$75-\$150 OFF On Most Models
Offer Expires Feb. 29

BOWMAN'S STOVE SHOP

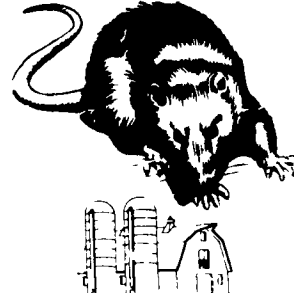
906 E. Main St., Ephrata, PA 17522

(717) 733-4973

Tues. & Wed. 10-6; Thurs. & Fri. 10-8; Sat. 10-4
1 Mile East of Ephrata on Rt. 322



ATTENTION FARMERS...
FREE ESTIMATES ON RODENT CONTROL



RODENTS carry diseases which can endanger the health of your poultry flocks. Your business is raising them. Ours is protecting them.

We Specialize In Sanitizing And Disinfecting Poultry Houses



Since 1928
Pest control is too important to trust to anyone else

Lancaster, PA
397-3721

Lewistown, PA
248-0983

State College, PA
237-7607

EAR CORN

Paying Top Prices For Good Quality Ear Corn

- Wet or Dry
- No Quantity too large or too small
- Fast Unloading - Dump on Pile & Go
- Easy access - 2.2 miles off 283 bypass-Manheim, Mt. Joy exit
- Daily Receiving 7:30 A.M. to 5 P.M. - unloading evenings & Saturdays by appt.
- Trucks available for pick up at your farm.

Call Anytime For Price
717-665-4785

JAMES E. NOLL GRAIN