

**3 SILOS AND UNLOADERS**

Harvestore (2080) & Goliath. \$17,500. 717-299-6180.

Three concrete stave silos: 20x60 Ribstone, 16x50 Ribstone, 16x60 Fickes. Including unloaders and fill pipes. Chester Co. 215-793-1345.

20 x 60 Lancaster silo with Clay unloader, lightning rod, silage diverter at bottom of chute, manual distributor in top. You move, \$5,000. Montour County, 717-437-2566.

**3 SILOS AND UNLOADERS**

For Sale: 25x80 Harvestore w/Goliath unloader & 20x70 Harvestore w/Hercules unloader. 717-284-4796

**New Silos**  
Val metal ring - drive silo unloaders  
T.M.R. mixers  
Berg tumbler mixer  
Rissler forage - Blender  
Hydrostatic feed - cart - with scales  
Berg and Farmway - barn cleaners  
cow mats and - gutter guards.  
Pole buildings  
General hauling

Serving Two Locations  
717-933-4616  
717-776-5270

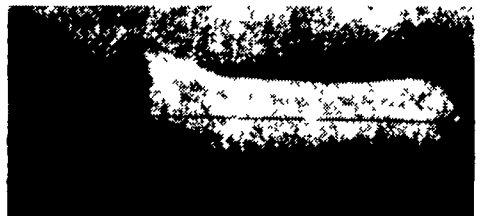


**A.I.A. Industries, Inc.**  
**Silage Bags & Hay Bags**  
An economical system for making and storing excellent silage.

**We Have Silage Bags and Hay Bags To Fit All Baggers at Direct Manufacturer's Prices**

**SPRING DISCOUNTS**

until May 31, 1988.  
Check Our New Pricing!



- LOW CAPITAL INVESTMENT
- EXCELLENT FEED
- CONVENIENT STORAGE
- DURABLE AND DEPENDABLE

- ECONOMICAL
- VERSATILE AND ADAPTABLE

**Silawrap THE NEW ROUND BALE WRAPPER SYSTEM**

An Economical Efficient Method Of Making Silage



This is the Silawrap system:

- The lift-arm places the bale on the turn table.
- Silawrap film is then attached to one of the bale strings.
- As the turn table is rotating, the rollers will slowly turn the bale.
- The Silawrap film is stretched around the bale overlapping 2-3-4 or 5 times according to the setting of the gears.
- The film is cut, film end secured and bale tipped off.

**NEW AND USED MACHINES AVAILABLE**



Dealerships Available & Salesmen Wanted East of Mississippi River

Lease Or Buy An 8', 9', 10' or 12' Bagger At Special Spring Price Call For Details

- Regional Manager - Frank Walters**  
**DISTRICT REPRESENTATIVES**
- MAC McELROY Brownstown, PA PH: 717-295-2562
  - BRUCE SHAFFER Acme, PA PH: 412-423-4768
  - RICHARD KOONTZ Bedford, PA PH: 814-847-2402
  - SYLVAN PEIGHT Shireysburg, Pa PH: 814-542-4256

**A.I.A. Industries, Inc.**  
P.O. Box 473 Schaefferstown, Pa. 17088 (717) 949-6511

**S & S SILO REPAIR WE DO**

- \* Most Any Kind of Stave Silo Work
  - \* Tear Down & Rebuild Stave Silos
  - \* Shotcrete Relining
  - \* New & Used Extensions
  - \* New & Used Roofs & Chutes
  - \* Unloaders
  - \* Wooden Calf Hutches
  - \* Fibreglas Feed & Silage Carts
  - \* Install Silage Distributors & Fill Pipes
  - \* Repair Level Flo Silage Distributors
  - \* Silo Doors - Most Any Kind
- We Buy Some Stave Silos

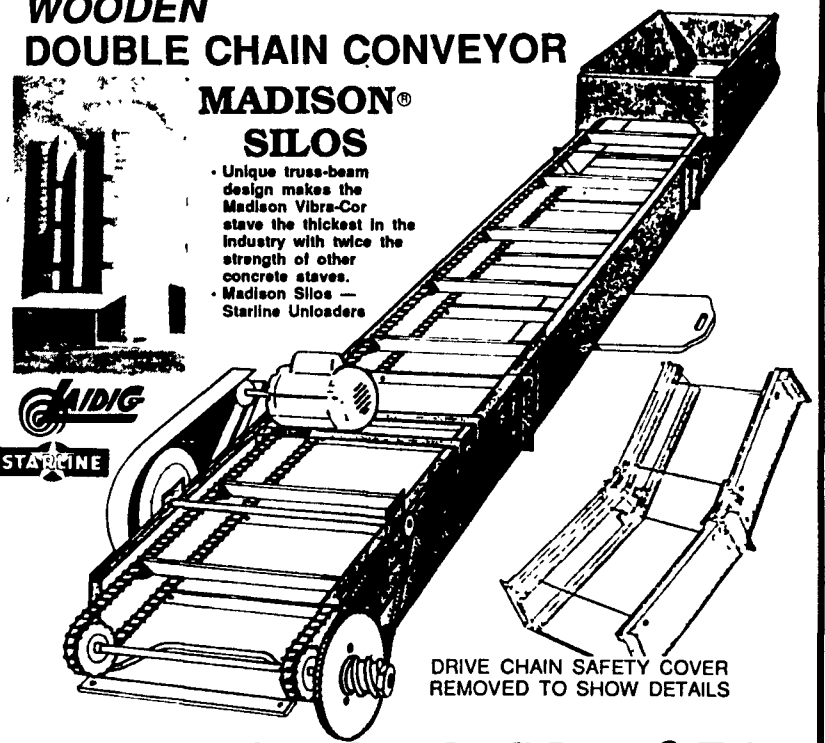
**SHOTCRETE RELINING**  
Repair Holes & Rough Silo Interiors. Make Your Old Silo Look Like New On The Inside.

We Cover A Wide Area  
RD 2, Box 91A Honey Brook., PA 19344  
215-273-3993  
215-273-9211

**WOODEN DOUBLE CHAIN CONVEYOR**

**MADISON® SILOS**

- Unique truss-beam design makes the Madison Vibra-Cor stave the thickest in the industry with twice the strength of other concrete staves.
- Madison Silos — Starline Unloaders



DRIVE CHAIN SAFETY COVER REMOVED TO SHOW DETAILS

**MADISON SILO CO. of PA**  
Ephrata, PA Phone: 717-733-1206



**Solid Ways To Improve Your Farm**

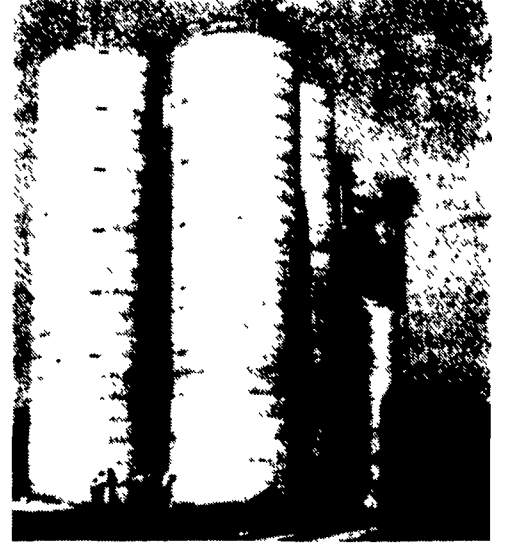
Consider The Many Advantages Of Concrete



**MANURE STORAGE SYSTEMS**



- Manure Storage Systems For The Small Herd - or The 400 Cow Herds And Larger.
- Systems Adaptable To Any Type Equipment
- SCS Approved
- Circular Tanks Poured-In-Place Above Ground - In Ground - Or Uneven Backfill.
- Pre-Cast Concrete panels Delivered And Set On Your Prepared Site.



Sollenberger Silos Corp.  
Box N, Chambersburg, PA 17201

- Please send information on:
- 1. Bottom Unloading Concrete Silos
  - 2. Top Unloading Concrete Silos
  - 3. Upright Bunker Silos
  - 4. Manure Pits
  - 5. Feed Bunks
  - 6. Cattleguards
  - 7. Hog Slats
  - 8. Industrial Silos/Tanks



**Sollenberger Silos Corp.**

A Nitterhouse Company  
Box N Chambersburg, PA 17201 (717) 264-9588

SINCE BEFORE 1910

Office Number - 717-264-9588

For Upright Silos Call  
Bob Francis  
717-532-6848

For Bunker Silos & Manure Systems  
Call Mike Hair  
717-263-0792

Name \_\_\_\_\_  
Address \_\_\_\_\_  
City/State \_\_\_\_\_  
Zip \_\_\_\_\_ Phone \_\_\_\_\_  
Best Time To Call \_\_\_\_\_