



Virginia Weekly
Richmond, Va.

Thursday, February 4, 1988
WEEKLY REVIEW IN VIRGINIA
MARKETS IN REVIEW; JAN. 28-FEB. 3,
1988. FEEDER STEERS AND HEIFERS
IN VIRGINIA AUCTIONS SOLD
STEADY TO \$3.00 HIGHER WHILE
MIDWEST PRICES WERE STEADY TO
\$3.00 HIGHER ALSO.

SLAUGHTER STEERS AND HEIF-

ERS WERE LOWER AT VIRGINIA
AUCTIONS THIS WEEK WHILE MID-
WEST MARKETS WERE STEADY TO
\$1.00 LOWER. BOXED BEEF PRICES
WERE \$4.90 LOWER LAST WEEK AS
THE BOXED BEEF CUT-OUT VALUE
REACHED \$101.04/CWT. TUESDAY.
COWS AND BULLS IN VIRGINIA
AUCTIONS WERE STEADY TO \$2.00
HIGHER WHILE MIDWEST PRICES
WERE STEADY TO \$2.00 HIGHER.
BEEF PRODUCTION LAST WEEK

WAS 4 PERCENT BELOW THE PREVI-
OUS WEEK AND 3 PERCENT ABOVE A
YEAR AGO. AVERAGE DRESSED
WEIGHTS WERE 13 LBS. HEAVIER
THAN LAST YEAR.

VEAL AND CALF PRICES IN VIRGI-
NIA AUCTIONS WERE STEADY LAST
WEEK, FOLLOWING MIDWEST
PRICES WHICH WERE FIRM.
SLAUGHTER WAS 4 PERCENT
BELOW A WEEK AGO AND 9 PER-
CENT BELOW A YEAR AGO AS AVER-
AGE WEIGHTS WERE 3 LBS. LIGHT-
ER THAN A YEAR AGO.

LAMB PRICES AT VIRGINIA AUC-
TIONS WERE STEADY TO \$1.00 LOW-
ER LAST WEEK AS MIDWEST PRICES
WERE STEADY TO \$3.00 HIGHER.
SLAUGHTER LAST WEEK WAS 4 PER-
CENT ABOVE THE PREVIOUS WEEK
AND 8 PERCENT ABOVE A YEAR
AGO. AVERAGE WEIGHTS WERE 1
LB. HEAVIER THAN LAST YEAR.

HOG PRICES IN VIRGINIA AUC-
TIONS WERE STEADY TO \$1.00 LOW-
ER THIS WEEK. PORK PRICES WERE
MIXED DURING THE WEEK. PORK
PRODUCTION LAST WEEK WAS 4
PERCENT BELOW THE PREVIOUS
WEEK AND 11 PERCENT BELOW A
YEAR AGO. AVERAGE WEIGHTS
WERE 3 LBS HEAVIER THAN LAST
YEAR.

THE RICHMOND HOG MARKET
CLOSED 50 CENT HIGHER THAN
LAST WEDNESDAY WITH BARROWS
AND GILTS US 1-4 200-240 LBS
\$43.50-44.50 PER CWT. TOTAL
RECEIPTS FOR THE WEEK 137 HEAD.

THE SOUTHEAST VIRGINIA HOG
MARKET CLOSED 50 CENT HIGHER
THAN LAST WEDNESDAY WITH
BARROWS AND GILTS US 1-4 200-240
LBS \$45.00-46.00 PER CWT. TOTAL
RECEIPTS FOR THE WEEK 18,712
HEAD.

AT HARRISONBURG, LYNCHBURG
AND TAPPAHANNOCK HOG PRICES
WERE STEADY TO \$1.50 LOWER
THAN LAST WEDNESDAY AT
\$42.00-45.50. SOWS RANGED
\$28.00-33.00 AND BOARS \$22.00 PER
CWT.

SLAUGHTER STEERS AND HEIF-
ERS 4%, SLAUGHTER COWS 22%,
SLAUGHTER BULLS 1%, SLAUGHTER
CALVES AND VEALERS 3%, FEEDER
CATTLE UNDER 600 LBS 62%, OVER
600 LBS 8%.

PRICE RANGES FOR VIRGINIA
AUCTIONS SLAUGHTER CATTLE
CHOICE STEERS 2-3 1000-1300 LBS
62.00-64.90 CHOICE STEERS 2-3 1300
LBS & OVER 62.50-64.80 CHOICE
HEIFERS 2-3 900-1100 LBS 59.90
CHOICE HEIFERS 2-3 1100 LBS &
OVER 61.50-63.00 UTILITY & COM-
MERCIAL COWS 42.00-53.00 BULLS -
1-2 900-1300 LBS 48.00-54.00 FEW 61.00
1-2 1300-1600 LBS 47.50-59.60 1-2 1600
LBS & OVER 53.75-61.00 SLAUGHTER
CALVES AND VEALERS VEALERS -
HIGH CHOICE AND PRIME 100-250
LBS 85.00-95.00 FEW 100.00 GOOD
AND CHOICE 100-250 LBS 70.00-88.00
CALVES - GOOD AND CHOICE
250-500 LBS 70.00-85.00 SLAUGHTER
LAMBS HIGH CHOICE & PRIME
95-125 LBS 80.00-84.00; BUCKS 77.00
SLAUGHTER HOGS US 2-4 200-250
LBS 41.75-46.70 SOWS US 1-3 300-500
LBS 30.00-37.00; 500 LBS & OVER
32.00-36.00 FEEDER CATTLE STEERS;
MEDIUM 1 300-500 LBS 86.00-99.00
FEW 106.00 500-700 LBS 80.00-90.00
FEW 75.00 HEIFERS; MEDIUM 1
300-500 LBS 75.00-88.00 500-700 LBS
69.50-80.00.

ALL TRENDS COMPARED TO LAST
TUESDAY.

SLAUGHTER HOGS 37 HEAD - NO
TRENDS REPORTED. BARROWS AND
GILTS US 2-4 200-250 LBS 46.70.

SLAUGHTER CATTLE 447 HEAD -
SLAUGHTER COWS STEADY.

SLAUGHTER STEERS AND HEIF-
ERS 235 HEAD SOLD STATE GRADED.

STEERS; (*DENOTES STATE
GRADED) *CHOICE 1000-1300 LBS
62.00-64.90 *CHOICE 1300 LBS &
OVER 62.50-64.80.

HEIFERS; *CHOICE 2-3 950-1100
LBS 59.90 *CHOICE 2-3 1100 LBS &
OVER 61.50-63.00.

SLAUGHTER COWS 200 HEAD
CUTTER & BNG.UT. 1-3 38.00-46.25
BRKG.UT. & COMM. 2-4 43.00-49.50
CANNER & LOW CUTTER 1-2
37.00-45.75.

SLAUGHTER BULLS 5 HEAD; 1-2
900-1300 LBS 52.50 1-2 1300-1600 LBS
54.75 1-2 1600 LBS & OVER 59.25-61.00.

SLAUGHTER CALVES AND
VEALERS 7 HEAD VEALERS - HIGH
CHOICE AND PRIME 100-250 LBS FEW
79.00-105.00.

LAMBS 65 HEAD - SLAUGHTER
LAMBS 50 CENT LOWER. HIGH
CHOICE AND PRIME 95-125 LBS 81.50
FEEDER LAMBS CHOICE AND FAN-
CY 70-85 LBS 94.50 SLAUGHTER
EWES ALL GRADES 20.00-25.00.

FEEDER CATTLE 340 HEAD - NO
TRENDS REPORTED. STEERS;
MEDIUM 1 MED.&LARGE 2 200-300
90.00-104.50 --- 300-400 99.50-107.00
FEW 82.00 --- 400-500 81.00-94.50 79.00
500-600 77.00-81.00 --- 600-700
82.00-83.00 79.50 700-800 80.00 ---
900-1100 72.00 ---

HEIFERS; MEDIUM 1 LARGE 1 SMALL
1 200-300 89.50 --- --- 300-400
73.00-86.50 --- 78.00-79.50 400-500 75.50
80.00 --- 500-600 70.00-79.00 --- ---
600-700 70.00-75.00 --- --- FEEDER
BULLS; MED. 1 SMALL 1
MED.&LARGE 2 300-500 LBS 83.00
86.50 --- 500-700 LBS 74.00-76.50 --- ---
700-900 LBS --- --- 66.75 BABY CALVES
RETURNED TO FARMS 39 HEAD
NEWBORN TO 4 WK OLD 60.00-127.00
PER HEAD. OVER 100 LBS 70.00-135.00
PER CWT.

Westminster Hay

Westminster, Md.

Tuesday, Feb. 2, 1988

Report Supplied by Auction

32 LOADS.
ALFALFA, RND. BALES, 30.00-37.00,
GOOD ALFALFA, 102.00, REG. ALFAL-
FA, 60.00-86.00.
ALFALFA MIX, 75.00 AND 76.00;
CLOVER, 47.50; TIMOTHY, 83.00;
TIMOTHY MIX, 55.00-74.00; GRASS,
50.00-80.00.
ORCHARD GRASS, 60.00; STRAW,
WHEAT, 66.00-73.00, OAT, 70.00, 1.15
BALE; OATS, 2.40 BU.; WOOD,
62.00-65.00 CORD.

Dewart Hay

Dewart, PA.

Monday, Feb. 1, 1988

Report Supplied by Auction

HAY, 24 LOADS, 51.00-135.00;
STRAW, 2 LOADS, 61.00-75.00; 18
LOADS WOOD, 25.00-58.00; OATS, 1.85
BU.

Northern Virginia Area Livestock Summary

Marshall (Fauquier) And
Staunton Union, Va.

Tuesday, February 2, 1988

OUR BUSINESS IS SERVICE TO FARMERS

Let us help you build a
successful marketing program!

Call:

717-761-2740
800-382-1356



Grains & Livestock

• Forward Contracting • Hedging Services

CFS PFA COMMODITY FUTURES SERVICE, INC.

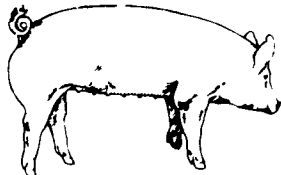
Livestock market and auction news

CRIPPLED AND DISABLED

Cows, Steers & Bulls
For Slaughter Under
USDA Inspection

Call Wayne Taylor
717-866-6289
215-286-9400

Lebanon, Berks,
Lancaster & Chester
Counties



EMERY'S
BUYING
STATION

OPEN TO RECEIVE
YOUR MARKET HOGS

AT THE GREEN DRAGON MARKET
RD 4, EPHRATA, PA 17522
1 MILE NORTH OF EPHRATA
ON NORTH STATE STREET.

HOURS: MONDAY, TUESDAY, and
WEDNESDAY 7:00 A.M. to 11:30 A.M.
215-458-5677 Residence
717-733-9648 Office

215-458-5677 Residence
717-733-9648 Office

YOU ARE PAID FOR YOUR
HOGS IMMEDIATELY

Ken & Lois Emery, Proprietors



ATTENTION FARMERS

EVERY MONDAY
HATFIELD PACKING CO. and
MOYER PACKING CO.

Will Receive Your
Hogs and Cattle at the
DANVILLE LIVESTOCK MARKET

RD 4, Danville, PA

- We will receive your hogs from 8 AM to 12 Noon every Monday. Your hogs will be weighed and paid for immediately.
- We will also accept your sows & boars.
- Your cattle will be received from 12:30 to 5 P.M. We will either pay you for your cattle immediately or you may sell them dressed weight.
- There will not be a commission or yardage fee deducted from your check.
- You may call our office Monday morning and we will be able to tell you the base price for hogs for the day.

MELVIN M. LEHMAN - Owner
Danville Buying Station

Phone: 717-275-2880

ATTENTION FARMERS

The New Way To Market Your Livestock

HATFIELD AND MOYER
PACKING CO. AND PACKING CO.
Will Receive Hogs Will Receive Cattle

At The

BLAIR-BEDFORD
BUYING STATION
RD 1 Martinsburg, Pa

MONDAYS - Hogs 8 AM to 11:30 AM
Cattle & Calves 8 AM to 3 PM

THURSDAYS - Cattle & Calves
8 AM to 3 PM

- No commission or yardage fees deducted from check
- Livestock weighed and paid for immediately
- You may call our office sale day for prices

DALE R. HOOVER - Owner

Business 814-793-3077
Residence 814-793-2657

SWINE PRODUCTION SALES AND SERVICE

Feeding Programs
And Services To
Meet Your Individual
Needs

Computerized
Record Keeping
System



Supplying Farm Fresh
Feeder Pigs

Marketing and Hedging
Services

Marketing of Genesis
Breeding Stock

Grain Purchasing
And Exchange

Developing Individual
Financial Programs

Quality Products And Services - Working For YOU

419 West High Street
Elizabethtown, PA 17022

Elizabethtown
(717) 367-1525

PA Toll Free
1-800-468-5524

Shippensburg
(717) 532-7845