

## NEW & USED TRAILERS

- Used 12 Ft. 3-Ton Gooseneck Utility Trailer w/Stake Sides ..... Was \$2,395 **NOW \$1,987**
- Used 5'x8' Trailer With Wire Mesh Ramp (Green) ..... Was \$750 **NOW \$500**
- New 5'x10' Single Axle Tilt Trailer 15" Tires On White Spokes..... **\$695**
- New 6'4" Wide x 16' Long Utility Trailer. You Will Like This Good Looking Workhorse With Bright Colors And 15" White Spokes **\$1,495**
- New 16 Ft. Multi-Purpose/Car Hauler With Ramps. When Not Hauling Cars This Unit Likes To Haul Anything..... **\$1,675**
- New 9 Ton Lo-Boy Equip. Trailer With Beavertail & Ramps..... **\$3,690**
- New 12 Ton Lo-Boy Equip. Trailer With Beavertail & Ramps..... **\$4,290**
- 7'x16' Enclosed Cargo Trailer, Tandem Axles And Side Door..... **\$3,100**
- 8'x32' Hillsboro Gooseneck Flatbed, Tandem Duals - Vac. Hyd. Brakes - Deck Over Neck ..... **\$228** per month to qualified buyer

**Hostetler Truck Bodies & Trailers**  
Rt. 322 Milroy, PA 17063  
717-667-3921

## 35 TRUCKS & TRAILERS

1975 Morman, cab over, 318 Detroit, tandem axle, 13 spd., 12,000 miles since overhaul, inspectable, \$3,800. 717-933-4151



1987 GMC 7500 truck w/alum. flat bed and 5th wheel, air brakes, 5,700 miles. Also 42'x12' high alum. stock trailer, never used. Lycoming Co.

Call 717-398-0477

1967 Int. 1700, 5&2, 392, for parts \$500. 215-932-5270.

15' Stoltzfus stainless steel spreader body with hyd. controls. 215-273-3095.

18' steel deck stake body w/rear lift gate. Will separate. S. Northumberland Co. 717-425-2437

1968 White 4000 tandem w/Prentice G log loader, good condition. 717-286-1064.

1969 Int. 1890, 392, 5&2, PS, air brakes, 10' dump. 3300 GVW \$3500. 215-932-5270.

1972 GMC w/16' alum. van-type bulk feed body and hoist \$3,200. 201-359-5934 eves.

1973 IH Loadstar grain truck, 44,000 GVW, telescopic hydraulic dump, 2 speed rear, Detroit diesel, air brakes, good rubber, many new or rebuilt parts including engine and trans Chester Co. 215-388-6501.

1973 Kenworth COE tandem axle, air ride. Also 28' Gilmore dump trailer w/tarp, A1 condition. 717-927-6004 after 5 p.m.

**C-700 FORD**  
20 Ft.  
TILT BED  
TRUCK  
**\$3,000**  
717-933-4114



### 1980 Ford L9000

350 Cummins w/Jake brake 13 speed, PS, AC, w/10 ft. alum. Stauffer lime spreader body and 3 axle air slide dry lime trailer. Entire unit w/hauling or will separate.

(215) 445-6914

### Custom Built Truck Bodies

Steel & aluminum, hoist installation, sales & service, frame lengthening & straightening.

### Wayne's Welding Service

Worton, MD 21678  
Business 301-778-6646  
Home 301-778-1373



## Over 400 New and Used Trucks In Stock For Immediate Delivery

### 1978 Ford F-700



V8, 5 Spd., 2 Spd. Rear, 27,000 GVW, 16 Ft. Steel Platform Body, 10x20 Tires Stock #7922-A  
Was \$7,995 **Now \$6,495**

### 1986 Ford Bronco



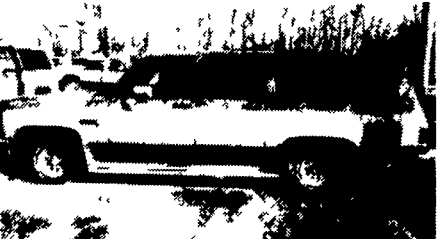
6 Cyl., 4 Spd., Stock No. 7516A  
Was \$12,995 **NOW \$11,995**

### 1986 Chev. K Blazer



Silverado, 6.2 Diesel, AT, Air, Loaded, Stock No. 5501C  
Was \$15,995 **NOW \$14,895**

### 1985 GMC Suburban



Diesel, Loaded, Stock No. 7116A  
Was \$12,995 **NOW \$11,995**

### 1977 Chev Crew Cab



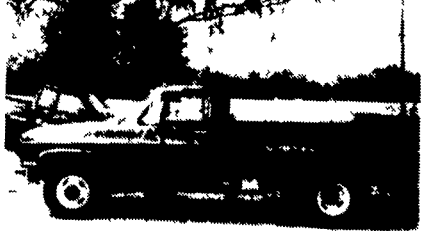
Silverado, '454', AT, AC, Stock No. 8370A  
**NOW \$3,995**

### 1987 Chev. C10



V6, 3 Spd., Like New, Stock No. 9415A  
Was \$8,995 **NOW \$7,995**

### New 1987 Chev Dump



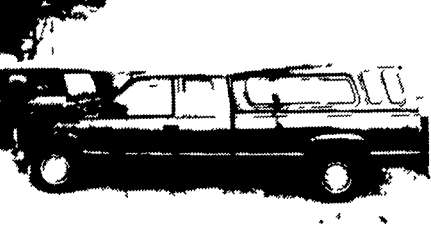
1 Ton V8, 4 Spd., w/8 Ft. Dump Body Stock No. 7337  
Was \$17,995 **NOW \$14,895**

### S10 EL Pickup



4 Cyl., 4 Spd., w/Air. ST #8202.  
\$7,995 Now w/Rebate **\$7,495**

### 1988 Pickups



Over 125 In Stock  
Starting As Low As  
**\$9,795**

- 1983 Grand Prix, Many Extras
- 1986 Yugo 4 Spd, 15,000 Miles
- 1981 VW Rabbit, 4 Door, Diesel
- 1984 Honda 4 Door, AT, Many Extras

- 1981 Chevette 4 Door AT
- 1982 Pontiac T-1000
- 1983 Dodge Ram
- 1979 Ford Mustang 2 Door Like New
- 1979 Chev Blazer
- 1977 Chev 1/2 Ton
- 1977 Suburban
- 1976 Jeep Wagoneer

### Frey's Used Cars

Hartman Bridge Rd.  
Ronks, PA 17572  
717/687-0611 &  
717/687-0363



1985 DODGE MAXI CARGO  
360, AT, PS, PB, 33,000 Miles, 8,900 GVW Stock #417



1985 FORD E350 ECONO-LINE CARGO 300 AT, PS, PB, AC, 52,000 Miles, 9,200 GVW, Stock #368

### FOUR WAY AUTO SALES

P.O. Box 444, R.D. #3  
New Holland, PA 17557  
(717) 354-3199

**NOBODY BUT NOBODY UNDERSELLS...**

## LARRY MURPHY CHEVROLET

(TRUCK CENTER)

1 Mile South of Park City, Old Harrisburg Pike, Lancaster, PA  
717-397-0601 717-397-0601