

The **SWEETEST** Flex-Wing Disc
You Can Buy...

K Krause

**4900
SERIES**

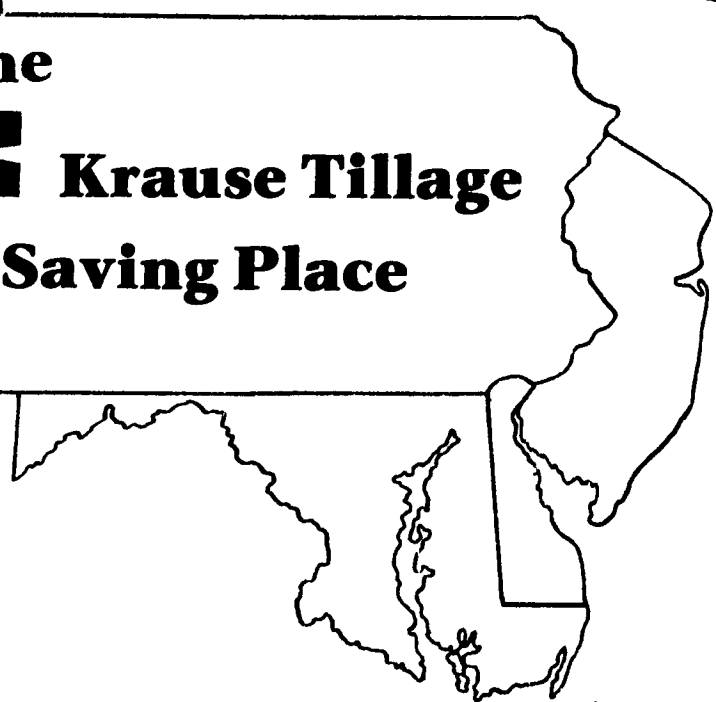


The



Krause Tillage

Saving Place



**THESE DISCS
LOVE ROCKS!**

Rockflex Models to Choose From:

- 4921.....18'1" Cut, 8400 lbs.
- 4924.....20'11" Cut, 9200 lbs.
- 4926.....22'5" Cut, 9675 lbs.
- 4927.....25'2" Cut, 13,750 lbs.

**Ask A Neighbor Who Owns One:
KRAUSE Should Be Your Next Disc Harrow!**

A KRAUSE TILLAGE MACHINE FROM HOOBER
IS A SAVING TO YOU
WHEN YOU BUY IT, WHEN YOU USE IT, WHEN YOU TRADE OR SELL IT.
HAVEN'T YOU WAITED LONG ENOUGH?



KRAUSE 2200 ROCKFLEX DISC
The Pennsylvania Rock Workhorse
... 12'3" or 13'7" Cutting Widths
... 110 lbs. per blade. .9" Spacing

If Farming Is Your Living

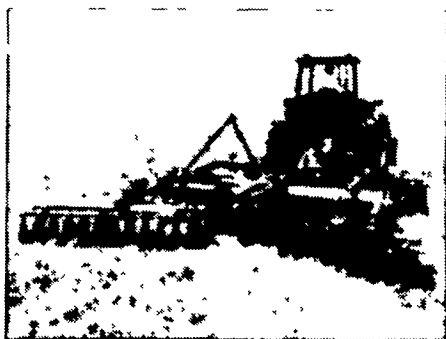


**Can Solve Your Tillage
Problems With**

KRAUSE



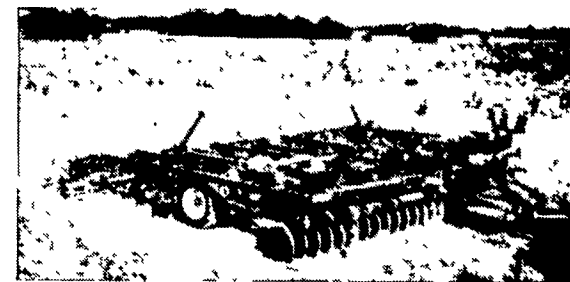
KRAUSE 2400 ROCKFLEX DISC
Plow Or Finish With This Disc
19', 23', 25' Cutting Width - 13'6" Transport
225 lbs Per Blade, 24" Blade



KRAUSE 1580 ROCKFLEX DISC
Single-Wing, Fold w/12' Transport
... 16'3" & 18'1" Cutting Width
... Hydraulic Swing Hitch



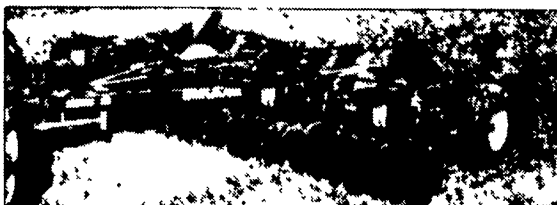
KRAUSE 5213 NO-TILL DRILL
... 21 Openers, 7 1/2" Spacing
... Easy Depth Adjustment
... Infinite Seed Cup Adjustments
... Close Coulter to Opener Placement
... 7400 lbs. Total Weight



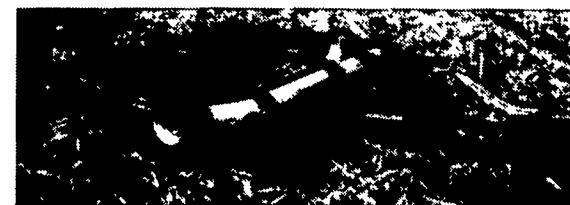
KRAUSE 3100 LANDSMAN
One Trip Conservation Finishing Tool
... 12'-36' Working Widths - 400 lb. Per Ft.
... 20" Disc Blades, Choice of Shanks &
Leveling Attachments



**KRAUSE 3600 LANDKING
SUBSOILER**
Combines action of disc, chisel & subsoiler
... 9, 11, or 13 Shanks - Spring Reset
... Combination Subsoiler & Chisel



**KRAUSE 4500 FLEX-WING SLICER
CHISEL**
Features Spring Mounted Bearing Arms
... 17'4" to 25'4"
... Folded Width - 10' to 13'



KRAUSE 2880 SLICER CHISEL
Heavy Duty - None Compares
... 7, 9 or 11 Shank
... Hydraulic Controlled Slicer Depth
... Spring Reset Shanks 30", 32" or 36"