

New Holland Vegetable Day Set

The Adult Farmer Program of the Eastern Lancaster County School District will conduct an all-day program for vegetable growers at the Summit Valley Elementary School on Monday, February 15, 1988. The program will begin at 9:15 a.m. with coffee, donuts, and visiting exhibits. The morning program will include presentations

on fertilizing vegetable crops, irrigation management, getting familiar with pesticides used with produce, and vegetable marketing featuring a new marketing concept.

The afternoon sessions will consist of individual meetings for specific vegetable crops. Several sessions will be held concurrently in different rooms featuring individu-

al sessions on: cantaloupes and watermelons; cole crops; sweet corn and ornamental corn; tomatoes; peppers; strawberries; asparagus, peas and snap beans; and beets, spinach, and lettuce. Producers may want to bring more than one member of the family in order to attend sessions going on at the same time.

Credit toward pesticide recertification will be awarded to those with Private Applicator Licenses.

Presenters on the program will include Ed Kee, Univ. of Delaware Extension Vegetable Specialist; Dean Cotton, Agway Vegetable Research Farm; George Perry, Schuylkill Co. Extension Agent; area irrigation dealers and pesticide dealers; Larry Yeager, Extension Marketing Specialist; local buyers; and representatives from Brubaker's Agronomic Service.

The Summit Valley Elementary School is located on Eastern School Rd., one and one-half miles south of New Holland between Brimmer and Kinzer Aves. The meeting will be in the all-purpose room on the east side of the building. Car and team parking available. Lunch will be available at a nominal fee. The program should end around 3:15 p.m.

All area vegetable producers are invited. For more information contact Don Robinson at the Adult Farmer Office at 354-4525.

Lancaster County Teens

(Continued from Page D14)

one place for the shooting. We all got stepped on a few times."

Except for the wait, Weaver says the whole experience was a lot of fun. His favorite part of the day was during the filming of the softball scene. "We put on brand-new uniforms, then they told us to get dirty," he says. "They wetted third base down and we all slid into the mud."

Ciba-Geigy contacted the youth through their 4-H and Future Farmers of America (FFA) clubs last summer. Try-out interviews were held during August, several taking place at various club meetings and one all-day session was conducted on a Saturday at the Historic Strasburg Inn.

As the commercial seeks to communicate, the three teenagers interviewed want to continue to work in agriculture and live in

Lancaster County.

"My dad often says he hopes I'll take over the farm someday," Carper says. Her family operates a large chicken farm. "I'd like to leave for awhile, maybe travel or go on to college, and then I'd like to come back so I can really appreciate all that I have now."

Weaver's family has a livestock and grain farm. "I think I'll keep my foot in agriculture somehow," he says. "I'd like to stay in the cattle business."

Rush's grandfather farms about 100 acres of land. The land has historical significance: it was bought by his great-great grandfather from William Eckman, who bought the land from William Penn.

Rush intends to return to his home and rural lifestyle. He says, "My dream is to someday come back to Lancaster County, be a veterinarian here and farm my grandfather's land."



Wanda Carper of Ronks participated in a 30-second commercial for Ciba-Geigy.

Garden Spot Dairy Day

The Eastern Lancaster County Adult Farmer Program will conduct a Garden Spot Dairy Day meeting on Wednesday, February 24, 1988, at the Martindale Fire Hall. The time frame for this day session is 9:45-3:00. All family members/hired help, or anyone involved with the care and feeding of dairy, are invited. A buffet luncheon will be served.

Glenn Shirk, Lancaster County Dairy Extension Agent, will be discussing Causes and Effects of Somatic Cell Count Scores (SCC) on Milk Quality and Energy Balance in Dairy. Dr. Joe Hlubik, Penn State Dairy Specialist, will address Feeding to Maintain a Healthy Rumen Fermentation to Achieve High Milk and Fat Production, plus he will also discuss Feed Additives and Protein Sources and their Impact on Production and Feed Costs.

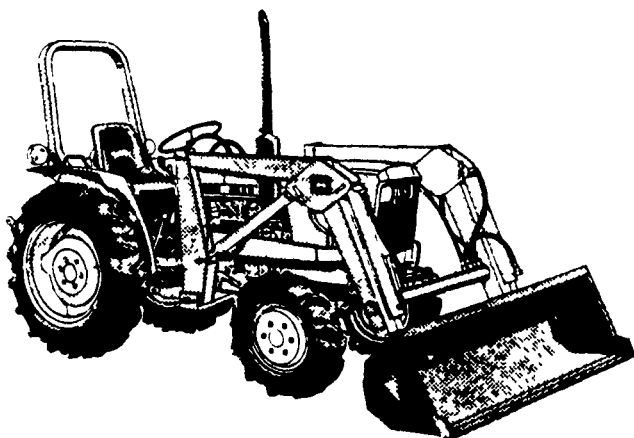
Local veterinarian, Dr. Keith Olin, will be highlighting Practical

On-farm Management Tips to Increase Profits, including herd health and mastitis prevention/control. Sid Barnard, Penn State Food Science Specialist, will present information relating to Goals & Procedures for Producing Good Quality Milk. He will also discuss Causes of Milkfat Variations & Depressions and Correction Procedures, as well as, Predicted Changes in the Dairy Industry by Year 1995.

Pre-registration is necessary to allow for luncheon preparation. Please call the Adult Farmer Office (354-4525) by February 15 to pre-register or for additional information. Cost will be \$4.75 per person for lunch and refreshments, payable at the meeting.

Martindale Fire Hall is located 50 yards north of the intersection of Lancaster Ave. and Grist Mill Road in Martindale. (Look for a Fire Hall sign located at the intersection.) Parking is limited at the Fire Hall.

John Deere Diesel Headquarters Winter Clearance



20 H.P.
J.D. 750 4 WD
AG TIRES

\$6995

Implements
Extra

Limited Stock Available

J.D. 950 4 WD
Ag Tires

\$9295

29 H.P.
Implements
Extra



Nothing Runs Like a Deere®

717
665-2407

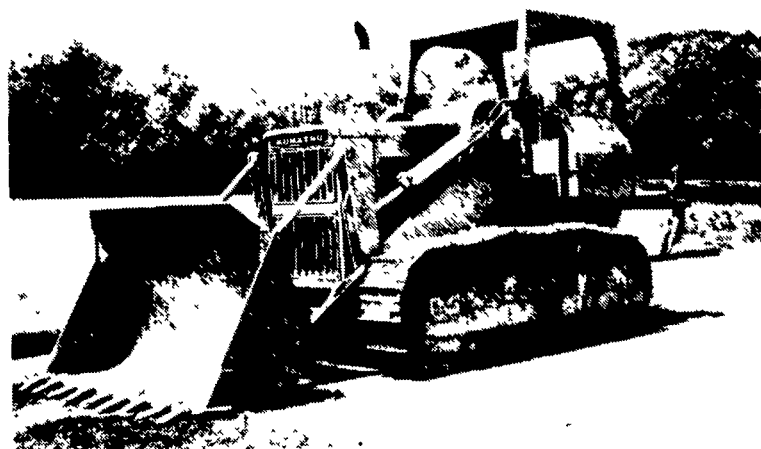
ELM, PA

Bomberger's

Mon., Thurs. & Fri. till 9:00 • Tues. & Wed till 6:00 • Sat till 5:00

FARM DRAINAGE and SOIL CONSERVATION

We Specialize In Soil Conservation
And Land Improvement Work



NOW AVAILABLE...

**LARGE TRACK LOADER w/BUCKET
CAPACITY OVER 3 YARDS**

We're Equipped With:
Dozers, Pans And Excavators to Handle Any
Excavating Jobs, Such As Terraces, Waterways,
Divisions, Ponds, Etc.



COCALICO EQUIPMENT CO.

Farm Drainage & Excavating
RD #4, Box 317 Denver, PA 17517
(215) 267-3808 (717) 738-3794

