

Early SPRING CLEARANCE
on leftover stock

UEBLER CARTS

- 810 30 Bushel Gas Hydrostatic Cart, List \$4480... **SALE \$3175**
- 812 43 Bushel Gas Hydrostatic Cart, List \$4680... **SALE \$3445**
- 808 27 Bushel Gas Hydrostatic Cart, List \$3850... **SALE \$2750**

K & S, Inc.

1302 Lancaster Pike, Quarryville, PA 17566
(717) 284-3111

New Deutz-Allis 8010 Tractor
107 hp, 4 WD, Cab/heater, air, maintenance free battery, dual remotes, dual fuel tanks, luxury seat, 540/1000 RPM PTO, non spln front axle, 16.9x26 10 ply front tires, 20.8-38 8 ply radial rear tires, 10 front weights, coolant heater, stadium lights.

List Price \$61,705.00
Less discounts - 23,905.00

No Trade
No Fancy Financing **\$37,800.00**
Springs Equipment Inc.
Rt. 669 S. Springs, Pa. 15562
814-662-2222

USED TRACTOR PARTS
SAVE \$\$\$ WITH USED PARTS

- AC B, C, WC, WD, D14, D17, 170
- Belarus 250, 420, 520, 820
- Case VAC thru 1070, 310 Crawler
- Cockshutt 30, 40, 570
- David Brown 880, 990, 995, 1200, 1210
- Ford 9N thru 6000
- IH A thru 806
- JD A thru 3020
- Kubota L260, L175
- Long 900 & 1100
- MF 35, 50, 65, 85, 135, 180, 1150
- MH 30, 33, 44, 101, Pony Nuffield 4-60
- Oliver 55, 66, 77, 88, 1800, 1850

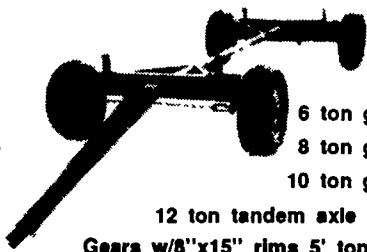
Plus several other makes and models

SPECIALS

- WFE Off MF 180, \$450
- WFE Off Farmall H, \$350
- WFE Off Ford 6000, \$450
- WFE Off Ford 5000, \$500
- JD Big Wheel Weight \$100 Pair
- IHC 1 Pc. Wheel Weights \$50 Pair
- IHC Fast Hitch Assembl. for 240, 340, 300, 400, 460, 560, \$350 Each
- 540 and 1000 PTO unit complete for 706 and up, \$685
- Original JD 4020 Top Links \$75
- Nationwide Parts Locator System
- "The Most Difficult Parts Found If They're Out There"
- Dealers For Tisco, Hershell, Swartz and Uebler.

Ed Goodrich Jr's Tractor Parts Company
Newark Valley, NY
607-642-8688

WAGON GEARS



6 ton gear \$390
8 ton gear \$440
10 ton gear \$575
12 ton tandem axle gear \$875
Gears w/8"x15" rims 5' tongue 5'-7" Adj.
Tongue \$30 extra; 11L Tires w/Tube \$50 ea.
Oak Wagon Flats, 8'x16'-18' \$175-\$190

AARON M. WENGER

Box 752 R.D. #3
New Holland, PA 17557
717-656-9876

Financing Available Thru Agri Credit Corp.

35 Used Combines To Choose From

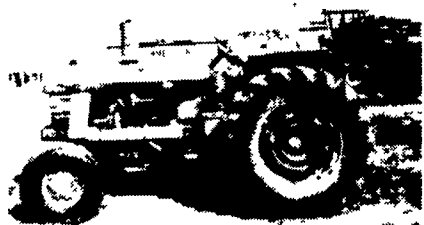
1984 MF 850 Hydro	\$48,000
1984 MF 850 Hydro	\$34,000
1980 New Idea Uni 801 Hydro 4 Wheel Drive	\$26,000
1980 New Idea 844 4 Row 30" Corn Head	\$4,500
1978 MF 760 Hydro 4 Wheel Drive	\$22,000
1978 MF 760 Hydro 960 Hrs.	\$22,000
1978 MF 750 Hydro	\$19,000
1978 MF 760 Hydro	\$18,000
1978 MF 760 Hydro	\$17,000
1978 JD 7700 Hydro	\$18,000
1978 JD 7700 Hydro	\$17,000
1977 MF 750 Hydro	\$15,000
1977 MF 750 Hydro	\$15,000
1977 MF 750 Gear Drive	\$18,000
1977 MF 760 Hydro	\$15,000
1977 MF 750 Gear Drive	\$14,000
1976 MF 760 Hydro	\$11,000
1974 MF 760 Hydro	\$12,000
1973 MF 510 Gear Drive	\$5,500
1971 MF 510 Gear Drive	\$3,000
1969 MF 510 Hydro	\$7,500
1969 MF 300 Gas	\$3,000
1969 JD 6600 Gas	\$3,500
1968 MF 510 Gear Drive	\$2,500
1968 MF 300 Gas	\$3,000
1966 MF 510 Gear Drive	\$2,500
1965 MF 410 Gas	\$2,000

1956 MF 82	\$700
IH 91 w/Com & Grain Head	\$1,200
Gleaner E w/Com & Grain Head	\$1,500
MF 43 & 1143, 4R 30" Quik Tach Corn Head	

USED EQUIPMENT

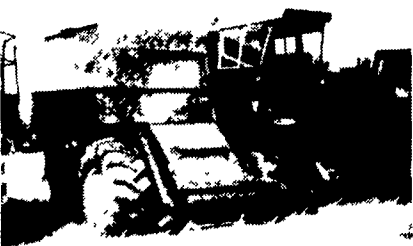
Tye 10 Ft. No-Till Grain Drill	\$8,000
Glenco 12 Ft. Transport Disc	\$6,200
Glenco 9 Tooth Soil Saver	\$4,900
Glenco 7 Tooth Soil Saver	\$3,900
MF 351 1 1/4 ft. Soil Finisher	\$5,200
Landoll 10 ft. Soil Finisher	\$3,200
Danuser Post Driver	\$1,650
Danuser Post Hole Digger	\$640
Danuser Wood Splitter	\$780
Ford 3 Pt. 3-16 Plow	\$600
MF 82, 3-16 Plow	\$600
MF 880 Hyd. Reset 6-16 Plow	\$4,650
MF 345 Spring Reset 3-16 Plow	\$2,500
MF 82 Spring Trp Plow	\$1,200
MF 41 3 pt. Sickle Bar Mower	\$2,400
EZ Trail 6 Ton Running Gear	\$550
EZ 475 Bu. Self Unloading Grain Cart	\$6,400
McCurty 12 Ton Running Gear	\$1,200
Ford 2-14 Plow	\$150
MF 66 Spring Trip Plow	\$450
MF 820 Hyd. 19 ft. Wing Disc	\$8,500
MF 233 10 ft. Disc Harrow	\$4,100
MF 120 Baler	\$1,200
MF 124 Baler	\$1,500
E-Z Trail Gravity Bin Wagon	
6' Rotary Cutter	\$525
New 8' Myer Snow Plow to fit Farm Tractor	\$1,400
New 3 Pt. 6' Hookup Snow Blower	In Stock

USED TRACTORS



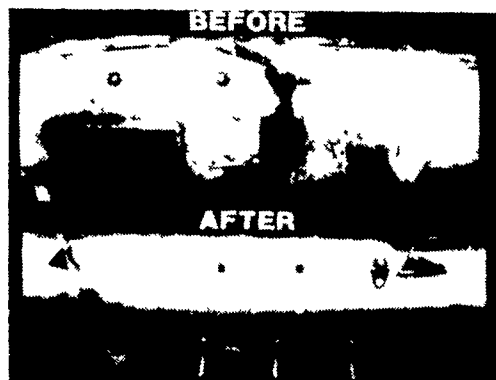
MF 50 Backhoe & Loader	\$12,000
MF 285 w/New Tires & Overhaul	\$8,500
MF 1080	\$5,500
MF 1650 Garden Tractor w/Mower	\$1,850
MF 245	\$5,800
MF 175	\$3,200
MF 165 Gas	\$2,900
JD 3010 Gas	\$2,900
JD 420 Crawler Loader	\$2,500
MF 85 Gas w/Loader	\$4,200
MF 375	\$13,500
JD 4320 w/Cab	\$7,500
JD 5010	\$4,500

1980 Uni System, Only 1200 Hrs.



801 4 Wheel Drive Unit.....\$26,000
844N 4 Row 30" Corn Head \$4,500
15' Grain Head.....\$1,500

We Are Ready To Deal
We Will Consider Any Offers



SCHMIDT "HEAVY DUTY REBUILT TABLE AUGER"

Get Your Table Auger Repaired For Your Combine. Replace Complete Section. Same As New. All Makes And Models. Why Buy New, Get Your Auger Repaired SAVE!!!

Call Now For Appointment
And Price Quotation To
Have Your Auger Repaired

3 SILOS AND UNLOADERS

3 SILOS AND UNLOADERS

MARTIN'S SILO REPAIR

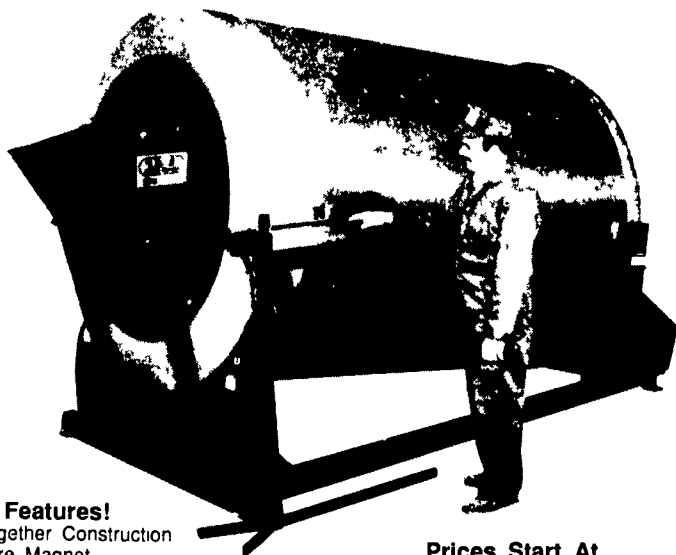
Moving Concrete Stave Silos
Also

- New & Used Extensions
- Replastering
- Fill Pipes
- Distributors
- Roofs
- General Repair

Rt. 1 Box 315
Denver, PA 17517
215-484-2517



TMR MIXERS - 10 SIZES!



- Features!**
- Bolt Together Construction
 - Hardware Magnet
 - Easy Maintenance and Lubrication
 - Fewer Moving Parts Than Any Other Mixer
 - Plastic Auger Tube Liner
 - Reliable Mechanical Beam Scale System
 - Standardized Component Parts

Prices Start At
\$3,950

Up To \$12,000 Depending
On Model

ZIMMERMAN'S FARM SERVICE

1/2 Mile West Off Rt. 501 On School Road, Bethel, PA
Phone 717-933-4114



M.M. WEAVER & SONS, INC.

Leola, PA 17540

(717) 656-2321

Located 4 miles West of New Holland on Route 23, 1 1/2 miles Northeast of Leola on the North Groffdale Road, 1 mile on the right, opposite Groffdale Mennonite Church