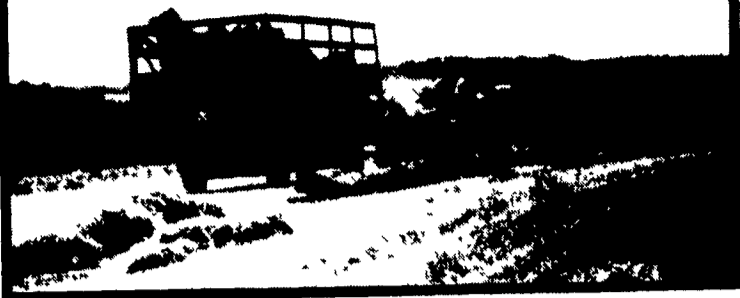


HAY MARKETS



Pa. Grain

Monday, January 25, 1988
Report supplied by PDA
COMPARED WITH LAST MONDAY'S MARKET FOR SOUTHEASTERN, CENTRAL AND SOUTH CENTRAL PA. CORN, WHEAT, AND EAR CORN MOSTLY STEADY; BARLEY AND OATS STEADY; SOYBEANS STEADY TO .10 HIGHER

SOUTHEASTERN PENNSYLVANIA
CORN NO. 2-Y RANGE 2.10-2.33, AVERAGE 2.21, *CONTRACT FOR HARVEST 2.11-2.33, @WHEAT NO. 2 RANGE 3.10-3.53, AVERAGE 3.36, *CONTRACT FOR HARVEST 3.05-3.26, BARLEY NO. 3 RANGE 1.40-1.85, AVERAGE 1.69, *CONTRACT FOR HARVEST 1.10-1.50, OATS NO. 2 RANGE 2.00-2.30, AVERAGE 2.13, *CONTRACT FOR HARVEST 1.27, SOYBEANS NO. 1 RANGE 6.00-6.28, AVERAGE 6.15, *CONTRACT FOR HARVEST 6.20-6.38; *GR SORGHUM #2 RANGE 1.85, AVERAGE 1.85, *CONTRACT FOR HARVEST 1.90, #EAR CORN RANGE 53.00-75.00, AVERAGE 62.00

CENTRAL PENNSYLVANIA
CORN NO. 2-Y RANGE 2.00-2.20, AVERAGE 2.10; @WHEAT NO. 2 RANGE 2.80-3.40, FEW REPORTED

2.55, AVERAGE 2.98, BARLEY NO. 3 RANGE 1.30-1.65, AVERAGE 1.49, OATS NO. 2 RANGE 1.75-2.05, AVERAGE 1.91, SOYBEANS NO. 1 RANGE 5.50-6.25, AVERAGE 5.91, *GR SORGHUM #2 RANGE 1.90, AVERAGE 1.90, #EAR CORN RANGE 50.00-56.00, FEW REPORTED 63.00, AVERAGE 55.60

SOUTH CENTRAL PENNSYLVANIA
CORN NO. 2-Y RANGE 1.95-2.30, AVERAGE 2.16; @WHEAT NO. 2 RANGE 2.55-3.10, FEW REPORTED 3.40, AVERAGE 2.88, BARLEY NO. 3 RANGE 1.45-1.85, AVERAGE 1.71; OATS NO. 2 RANGE 1.70-2.20, AVERAGE 1.98, *SOYBEANS NO. 1 RANGE 5.60-6.00, AVERAGE 5.80, *EAR CORN RANGE 60.00-70.00, AVERAGE 63.29

WESTERN PENNSYLVANIA
CORN NO. 2-Y RANGE 1.85-2.20, AVERAGE 1.98; @WHEAT NO. 2 RANGE 3.00-3.25, AVERAGE 3.11, OATS NO. 2 RANGE 1.75-2.10, AVERAGE 1.92, SOYBEANS NO. 1 RANGE 5.90, AVERAGE 5.90, *EAR CORN RANGE 50.00-58.00, AVERAGE 54.33

SOUTHEASTERN, CENTRAL & SOUTH CENTRAL SUMMARY

CORN NO. 2-Y RANGE 2.00-2.33, AVERAGE 2.16, @WHEAT NO. 2-Y RANGE 2.75-3.53, AVERAGE 3.09, BARLEY NO. 3 RANGE 1.40-1.85, AVERAGE 1.63, OATS NO. 2 RANGE

1.75-2.25, AVERAGE 2.01; SOYBEANS NO. 1 RANGE 5.60-6.28, AVERAGE 6.02; *EAR CORN RANGE 50.00-75.00, AVERAGE 60.17.

MONTH AGO

CORN NO. 2-Y RANGE 2.11; @WHEAT NO. 2-Y RANGE 3.04; BARLEY NO. 3 RANGE 1.63; OATS NO. 2 RANGE 1.95; SOYBEANS NO. 1 RANGE 5.74, *EAR CORN 56.97.

YEAR AGO

CORN NO. 2-Y AVERAGE 1.79; @WHEAT NO. 2-Y AVERAGE 2.70, BARLEY NO. 3 AVERAGE 1.42, OATS NO. 2 AVERAGE 1.49; SOYBEANS NO. 1 AVERAGE 4.73; *EAR CORN AVERAGE 51.18.

Regional Hay

January 25, 1988
Eastern, Pa.
On-Farm Sales

HAY & STRAW MARKET FOR EASTERN PA. (ALL HAY NO. 2 AND BETTER, PRICES PAID BY DEALERS AT THE FARM & PER TON.) HAY AND STRAW STEADY; MOVEMENT SLOW
ALFALFA 85.00-110.00, MIXED HAY 65.00-95.00, TIMOTHY HAY 70.00-90.00; STRAW 60.00-80.00, MULCH 30.00-50.00

LANCASTER CO. AUCTIONS

SUMMARY OF LANCASTER CO HAY AUCTIONS FOR WEEK ENDING 1/22/88. PRICES PER TON: LOADS. 313 HAY, 122 STRAW, AND 25 EAR CORN
ALFALFA 88.00-143.00; MIXED HAY

61.00-130.00; TIMOTHY HAY 73.00-110.00; STRAW 57.00-100.00; EAR CORN 62.00-81.00.

CENTRAL PA. HAY AUCTIONS

SUMMARY OF CENTRAL PA. HAY AUCTIONS FOR WEEK ENDING 1/22/88. PRICES PER TON: LOADS: 217 HAY, 74 STRAW AND 4 EAR CORN.
ALFALFA 85.00-129.00; MIXED HAY 60.00-110.00; TIMOTHY HAY 63.00-87.50; STRAW 49.00-85.00; EAR CORN 70.00-86.00.

Frederick Co. Hay

Buckeystown, Md.
Thursday, Jan. 28, 1988

Report Supplied by Auction
71 LOADS. MARKET STEADY TO LOWER ON ALL GRADES HAY AND STRAW DEMAND SLOW.
ALFALFA, 7 LOADS FAIR TO GOOD, 80.00-122.00, 6 FAIR, SOME DAMAGED, 60.00-77.00, ALFALFA, MIX, 5 LOADS FAIR TO GOOD, 72.00-107.00, 2 DARK 52.00-61.00, ONE FANCY, 135.00.
TIMOTHY HAY, 7 LOADS FAIR TO GOOD, 80.00-112.00, 4 DARK OR DAMAGED, 53.00-77.00, MIXED HAY, 13 LOADS, SOME DAMAGED, SOME BIG BALES DAMAGED, 25.00-112.00, STRAW, 6 BRIGHT, 77.00-86.00, 7

LOADS, SOME BIG BALES DARK AND DAMAGED, 20.00-72.00.
FIREWOOD, 9 LOADS GOOD SPLIT OAK, 70.00-81.00 CORD, 2 LOADS MIXED, 60.00-65.00 CORD.

Leinbach's Hay

Shippensburg, PA
Jan. 23 & 26

Report supplied by Auction
61 LOADS.
ALFALFA, 66.00-127.00; MIXED HAY, 60.00-75.00; TIMOTHY, 62.50-80.00; GRASS, 65.00-81.00.
STRAW, 50.00-60.00; OATS, 1.75-2.30 BU.
WOOD, 31.00-51.50 LD.

New Holland Hay

New Holland, PA
Monday, Jan. 25

Report Supplied by Auction
192 LOADS
ALFALFA, 70.00-142.00, TIMOTHY, 60.00-100.00; MIXED HAY, 60.00-130.00; STRAW, 42.00-100.00, CORN, 80.00

Vintage Hay

Paradise, Pa.

Thursday, Jan. 28, 1987

Report Supplied by Auction
ALFALFA HAY, 77.00-123.00, MIXED HAY, 99.00-101.00, ORCHARD GRASS, 79.00-86.00, EAR CORN, 72.00; STRAW, 72.00-105.00

HOSTETTER PORK



Wanted To Buy
Crippled and
Disabled Sows
and Boars

Hogs Slaughtered For
Federal Inspection
PHONE 717-274-7609

Seeking Profits In Commodities Trading?

- Hedging
- Speculating
- Managed Account
- Commodity Options

Call Forney Longenecker,
Commodities Investment Executive,
At (717) 295-8914

SHEARSON
LEHMAN BROTHERS
29 E. King St.
Lancaster, PA 17603



HERE TO STAY!

MAKE 1988 THE YEAR TO GET ACQUAINTED WITH
NEW HOLLAND SALES STABLES, INC. - THE ACTION AUCTION

MONDAY

FAT HOGS



EARLY BIRD HOG SALE

7:30 AM
For Your Protection Your Hogs Must
Be Identified

10:00 AM

HORSES MULES



11:00 AM



HAY
STRAW
GRAIN



1:30 PM
BEEF SALE
CALF, SHEEP,
GOATS

WEDNESDAY

DAIRY 11:00 A.M. COWS



HEIFERS, BULLS

NEW HOLLAND SALES STABLES, Inc.

12 Miles East of Lancaster
on Route 23, New Holland, Penna

The Action Auction
717-354-4341

Mgr - Abe Diffenbach - 717-393-4464
Norman Kolb - 717-397-5538

Field Representatives
Alan Diffenbach 717-656-9806
Luke Eberly 215-267-6608 - 738-1865

WEDNESDAY - 1:30 P.M. FEEDER PIG SALE



We endeavor to keep our barns cleaner
than yours. State graded until 12 Noon

THURSDAY

10:00 AM

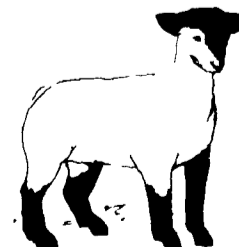
BULLS -



STEERS -
BEEF COWS

1:30 P.M.

CALVES



SHEEP
GOATS

Market your livestock thru New Holland Sales. your neighbor does
Pick-up your check before you leave