

## Deadline Nears For PA's Holstein Convention

LANCASTER — Tuesday, February 2, is the deadline for reservations for the 1988 Pennsylvania Holstein Convention, being held February 23, 24 and 25 at the Willow Valley Family Resort and Convention Center at Willow Street.

Room reservation must be made in writing to Willow Valley at 2416 Willow Street Pike, Lancaster, Pa. 17602.

Tickets for the various events of the three-day convention can be purchased from Jed and Sue Beshore, 396 Old York Road, New Cumberland, Pa. 17070.

Host Day will be Tuesday, featuring tours of the People's Place in Intercourse; Atlantic Breeders Cooperative and Ford New Holland. In the evening the convention sale will be held at Willow Valley, with a pre-sale on-your-own buf-

fet. Ray Owen, an entertainer from Gettysburg, will provide pre-sale entertainment. About 50 of the top cows in the state will be offered for sale.

Wednesday will be the business meeting of the Association, and Dr. John McCormack, columnist for Hoard's Dairyman, will speak

in the morning. The ladies will have their own luncheon at the Treadway Resort Inn, featuring a fashion show by Watt and Shand, and a presentation on herbs by Mrs. Bertha Reppert, owner of The Rosemary House in Mechanicsburg.

Wednesday night's banquet will feature entertainment by Re Creation, a nationally known singing group, and following the banquet will be the first-ever auction to benefit the youth scholarship. The convention will conclude with an awards breakfast on Thursday.

Juniors will have a full sche-

dule, with Dairy Bowl and the Dairyman's Contest on Tuesday, their own party on Tuesday evening and a pool party on Wednesday. They will have a separate banquet Wednesday evening before joining in efforts to raise money for the junior scholarship program.

## Ten Jersey Scholarships Available

There are four *Jack C. Nisbet Scholarships* awarded annually. Entries for these scholarships are accepted from those Jersey youths who are entered in the previous year's National Jersey Youth Achievement Contest (announced during the current year).

Students who are enrolled in college or those who have completed high school and are ready to enter a college or university are eligible to apply for one of three

*William A. Russell Scholarships* awarded annually by the AJCC. Applicants must have an interest in or background with Jerseys.

Two *V.L. Peterson Scholarships* are awarded each year to students who have completed at least one year of college. Any Jersey junior meeting that qualification may apply for these scholarships.

The *Paul Jackson Memorial Scholarship* is awarded each year to one Jersey junior who has completed at least one year of college.

All applications for scholarships are due in the AJCC office by July 1. For further information, contact: The American Jersey Cattle Club, P.O. Box 27310, Columbus, OH 43227-0310, (614) 861-3636.

COLUMBUS, OH — High school graduates and college and university students with Jersey backgrounds are eligible to apply for ten scholarships awarded annually by The American Jersey Cattle Club.

The basis for selecting the recipients will be need, character, scholastic excellence and other qualifications commonly used as criteria for the awarding of scholarships for study at an accredited college or university.

### PAUL B. ZIMMERMAN INC.

#### AUTOMATIC HEADGATE

Full Roof Cover For Outdoor Protection

Double Linkage For Extra Stability

Handle Can Be Operated From Both Sides

Full Sheet Protection On Front

Heavy Duty Latch For Positive Locking

No Wrenches Needed To Adjust Back Set Open

Fast, Easy Adjustment On Both Sides So Animal Size Can Be Adjusted Under Pressure

Handle To Help Close For Slow Or Horned Cattle

Neck Size Adjusts From 5" to 7"

Optional Chute

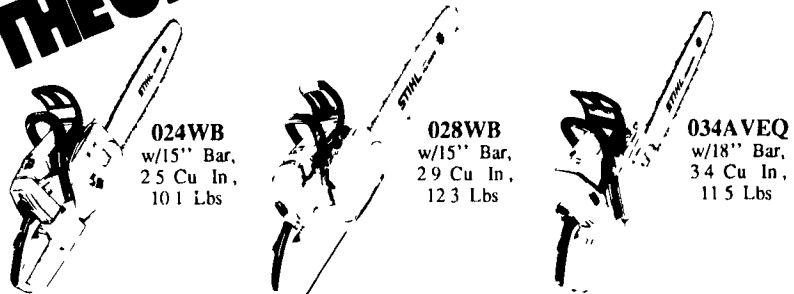
### PAUL B. ZIMMERMAN, INC.

Call or Write For Additional Information And Your Nearest Dealer

295 Woodcorner Rd  
Lititz, PA 17543  
1 Mile West of Ephrata  
Phone: 717-738-1121

### STIHL'S THE ONE.

### Save now on STIHL quality!



Special flush-cut design. Ideal for limbing operations or cutting firewood. Features electronic ignition, Quickstop™ Inertia chain brake, anti-vibration system.

Call Your Stihl Dealer Today And Arrange For A FREE Demonstration

BAR & CHAIN OIL  
Reg \$5.79 Gal  
NOW \$3.99 Gal.



WES STAUFFER ENGINES & EQUIPMENT  
RD 3 Ephrata PA 17522  
Phone 717 738 4215

EBLING LAWN & GARDEN SERVICE  
688 E. Lincoln Ave  
Myerstown PA 717 856 6720

MARTIN HARDWARE & EQUIPMENT CO.  
Rt 501 1 1/2 Miles South of Schaefferstown PA  
Phone 717 849 6817

BOMBERGER'S STORE, INC.  
656 W. Newport Rd  
Eim PA  
Phone 717 665 2407

OXFORD GREENLINE, INC.  
1100 Limestone Rd  
Oxford PA 19353  
Phone 215-932-2753

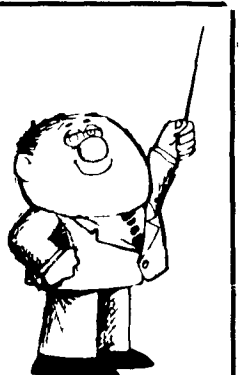
GAP POWER EQUIPMENT  
Corner of Rt 30 & Rt 897  
Gap PA  
Phone 717 442 8970

A & B SALES & SERVICE  
2 Miles South of Rt 23 Along 772  
Thru Monterey RD 1 Ronks PA

SHARTLESVILLE FARM SERVICE  
RD #1 Box 1382 Hamburg PA  
Phone 215 488 1025

HOLLINGER'S LAWN & GARDEN EQUIP.  
Ephrata PA 717 738 1131  
Hershey PA 717 533 4060  
Lancaster PA 717 656-2710

**STIHL**  
NUMBER ONE WORLDWIDE



A LESSON WELL LEARNED...

LANCASTER FARMING'S CLASSIFIED ADS

GET RESULTS!

Phone: 717-394-3047 or 717-626-1164

# Dedication and Dependability...

These words sum up our service to Pennsylvania agribusiness. Cultivate a relationship with the Meridian banker near you.

Palmyra/Myerstown  
Andrew C. Terrell  
717-274-6402

Kennett Square/Thorndale  
Gary Kline  
215-444-6060

Lancaster  
Bob Zook  
717-295-8577

Reading  
William Hughes  
Blaine Fessler  
Doug Darling  
215-320-FARM

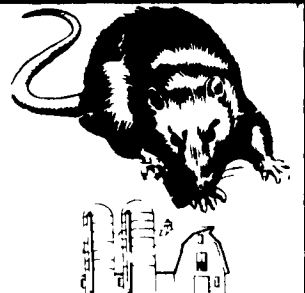
Or call toll-free, 1-800-222-2150

**Meridian Bank**

Professionals with the personal touch.

MEMBER FDIC

ATTENTION FARMERS...  
FREE ESTIMATES ON RODENT CONTROL



RODENTS carry diseases which can endanger the health of your poultry flocks. Your business is raising them. Ours is protecting them.

We Specialize In Sanitizing And Disinfecting Poultry Houses

**Ehrlich**

Since 1928

Pest control is too important to trust to anyone else

Lancaster, PA  
397-3721

Lewistown, PA  
248-0983

State College, PA  
237-7607