

Evergreen Sold Most Tractors In Pennsylvania



Evergreen Tractor Inc. of Lebanon, was presented a special recognition award from Deere & Co. during their annual John Deere Day celebration held January 20 at the Lebanon Area Fairgrounds. This award recognized superior sales success and achievements.

Presentation of the award was made by Donald Worner, Territory Manager, John Deere Co. - Columbus, Ohio. "This award has a special significance as it recognizes top selling dealerships during Deere's 150th anniversary year. With the highest unit sales of John Deere farm tractors in the state of Pennsylvania, Evergreen Tractor Inc. can be very proud of its accomplishments during 1987."

Dennis Grumbine, president of Evergreen Tractor Inc., accepted the award stating, "This award is very meaningful to myself and all of the dealership employees. It is the efforts of our sales, service, and parts people which has enabled our dealership to gain this leadership

position. We are looking forward to serving the agricultural community with a high level of quality

for many years to come and are very encouraged by the outlook for 1988."

Guernseys Registrations Increase

An increase in registration and transfer applications highlighted the close of a very successful year for the American Guernsey Association (AGA). A total of 20,289 registration applications and 6,714 transfer applications were received by the association office in 1987. These numbers show an increase of 23.3 percent in registrations and 3.3 percent in transfer activity from the previous year. The total number of applications processed for the 1987 calendar year was 22 percent above 1986 figures.

"This increase can be attributed to two major factors," according to Records Department Director Arlene Crosser. "The Genetic Recovery program was influential in bringing quite a few Guernseys

into the herdbook during the year," Crosser said. "The use of the fee-waivers also encouraged many people who had fallen behind to update their registrations," Crosser concluded.

"The interest in Guernseys has generally increased," AGA Executive Secretary-Treasurer Erick Metzger stated. Highlighting the results of the increase in Guernsey registration numbers Metzger said, "The value of registration papers is being reflected in the marketplace." Like Crosser, Metzger credits the AGA's Genetic Recovery program with some of the success. "Herds that started with the Genetic Recovery program several years ago have continued to register their cattle," he concluded.

Evergreen Tractor Inc., Lebanon, sold the most tractors in Pennsylvania. Dennis Grumbine, owner (right), received special recognition from Donald Worner, John Deere Company Manager at a special dealer day at Lebanon Area Fairgrounds.

HESSMILLS

North Atlantic 38 from Purina Mills, Inc.

If you are interested in a top of the line 38% protein concentrate that features the following:

- High Quality - only the highest quality ingredients are used
- Very Palatable - makes a great top dress
- Versatile - works extremely well in a base mix and provides excellent income over feed cost
- Available in meal or pellets
- Excellent vitamin and mineral fortification

Give us a call today to learn more about this fine product.

HESSMILLS
PURINA CHOWS

6 S. Vintage Rd.
Paradise, PA 17562
(717) 442-4183
(717) 768-3301

Rt. 82
Unionville, PA 18375
(215) 347-2377

* Registered trademark of Ralston Purina Company

JOHN DEERE DAY

MONDAY, JANUARY 25, 1988
At Our Store 9 AM and 7 PM

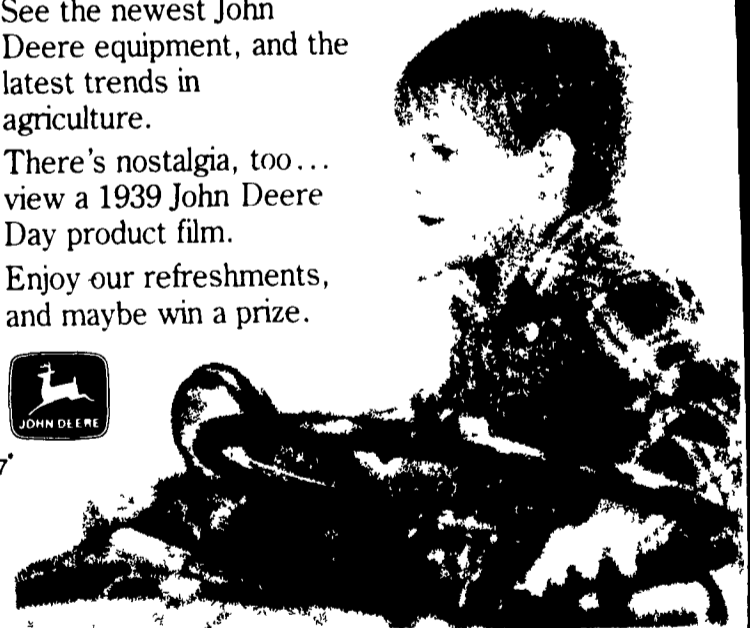
SOME OF TODAY'S BEST FARMERS GOT THEIR START AT JOHN DEERE DAY

KEEP THE TRADITION GOING

- You're invited to attend our John Deere Day... and bring your family, too!
- See the newest John Deere equipment, and the latest trends in agriculture.
- There's nostalgia, too... view a 1939 John Deere Day product film.
- Enjoy our refreshments, and maybe win a prize.



KA7



SAVE \$\$ SAVE \$\$
10% CASH DISCOUNT
ON PARTS
And Other Specials

- Informative Films & Entertainment
- Refreshments Will Be Served
- Factory Representatives Will Be On Hand For Product Information

ABC GROFF, INC.

Since 1890
110 S Railroad Ave
New Holland PA 17557

Mon.-Fri. 7:30 AM-5:30 PM
Sat.: 7 AM-12 Noon

717-354-4731