

Oklahoma Cattle

Tuesday, Jan. 21

Report supplied by USDA

WEEKLY CATTLE SUMMARY:
FEEDER CATTLE AND CALVES
UNDER 600 LB. 2.00-4.00 HIGHER;
OVER 600 LB. 1.00-3.00 HIGHER.
SLAUGHTER COWS STEADY.
SLAUGHTER BULLS STEADY TO 1.00
HIGHER. CLEAR WINTER WEATHER;
BULK OF SNOW AND ICE HAS
MELTED; FIELDS AND COUNTRY
ROADS VERY SOFT.
RECEIPTS THIS WEEK 11,489; LAST

WEEK 1,300; LAST YEARS RUN 661
HEAD. LAST WEEKS AND LAST
YEARS NUMBERS A RESULT OF
TRANSPORTATION DIFFICULTIES
DUE TO ICE AND SNOW.
SUPPLY INCLUDED 80% YEAR-
LING FEEDERS; 15% FEEDER
CALVES; 5% COWS & BULLS. ABOUT
ONE-FOURTH OF COW NUMBERS
RETURNING TO THE COUNTRY.
QUOTES FOR THE WEEK FOLLOW:
MEDIUM & LARGE FRAME 1.
FEEDER STEERS: 300-400# BULK
100.50-107.25; 400-450# BULK
97.50-106.50, RANGE 96.75-106.50;

450-500# BULK 90.00-98.00; 500-550#
BULK 87.50-94.25, RANGE 86.25-94.25;
550-600# BULK 84.00-93.00, RANGE
84.00-93.75; 600-700# BULK
82.00-87.25, RANGE 81.50-87.50;
700-750# BULK 80.75-85.50, RANGE
80.00-85.70; 750-800# BULK
80.00-83.75, RANGE 79.00-85.70;
800-850# BULK 78.00-81.70, RANGE
77.00-81.70; 850-900# BULK
76.50-81.20, RANGE 75.50-81.70;
900-960# BULK 73.00-78.00
FEEDER HEIFERS: 200-300# BULK
91.00-101.00, 300-400# BULK
86.00-91.00, RANGE 85.00-91.00;

400-450# BULK 82.75-90.00, RANGE
80.00-90.00; 450-500# BULK
80.00-85.00, RANGE 78.00-85.00;
500-550# BULK 79.50-85.75; 550-600#
BULK 77.00-81.00, RANGE 76.75-81.00;
600-700# BULK 76.00-79.00, RANGE
75.50-79.00; 700-750# BULK
74.75-78.50, RANGE 73.50-78.50;
750-800# BULK 72.25-77.25; 800-825#
BULK 71.25-75.50, RANGE 72.25-75.50.
SLAUGHTER COWS: BREAKING
UTILITY & COMMERCIAL 3-5 BULK
43.75-48.50; BONING UTILITY 1-2
BULK 46.25-49.50, RANGE 46.25-52.25;
CUTTER 1-2 BULK 45.00-48.50, RANGE
44.50-48.50; CANNER & LOW DRESS-
ING CUTTER BULK 41.00-44.25,
RANGE 38.25-44.50.
SLAUGHTER BULLS: YIELD
GRADE 1, 1000-1500 LB. BULK
54.50-60.00, 1500-2100 LB. BULK
55.75-61.00, RANGE 55.75-62.00

35.00-43.50; BUTCHER SOWS
32.00-41.00; FEEDER SHOATS
15.00-36.00.
VEAL: GOOD 84.00-98.00; STAN-
DARD 76.00-82.00; UTILITY
60.00-75.00; BULL CALVES
1.20-1.62% .
SHEEP & LAMBS: CHOICE
85.00-95.00; GOOD 70.00-80.00;
SLAUGHTER EWES 20.00-30.00.
SLAUGHTER CATTLE: STEERS:
GOOD 62.00-63.50; STANDARD
60.50-61.00; UTILITY 55.00-58.00.
HEIFERS: GOOD 58.00-60.50; STAN-
DARD 54.00-56.00; UTILITY
45.00-50.00.
COWS: COMMERCIAL 44.00-50.00;
UTILITY 42.00-48.00
BULLS: COMMERCIAL & GOOD
48.50-55.50; CUTTER & UTILITY
42.00-48.00.
STOCK-FEEDER CATTLE: (YEAR-
LING STEERS) GOOD 70.00-75.00;
MEDIUM 55.00-65.00.
STEER CALVES: GOOD 75.00-89.00;
MEDIUM 60.00-70.00.

GARDEN SPOT TOBACCO AUCTION

THANK YOU FARMERS...for your support by consigning many crops of high quality tobacco. Having a good floor to offer the buyers made a better sale for all the tobacco here and made for higher prices for everyone.

THANK YOU BUYERS...for your confidence in our ability to conduct a good sale. Having good quality tobacco on the floor which farmers are willing to sell helps you to fill your orders.

FARMERS & BUYERS...LET'S DO IT AGAIN NEXT WEEK!!! The auction system can be the best method to market tobacco for both farmers & buyers.

SALES SCHEDULE
Tuesday, Jan. 26 - 9:30 A.M.
Thursday, Jan. 28 - 1:30 P.M.

Receiving Monday thru Friday, 8 a.m. to 4 p.m.
Trucks are available - call for arrangements

Your New Auction Warehouse Is Located Along
Rt. 322, Midway Between Hinkletown & Blue Ball.

Member:
 Keystone Tobacco
Marketing Group



Garden Spot Tobacco Auction
PO Box 190
Blue Ball, PA 17506
717-354-6934
License #AY-23-L

NEW REVOLUTIONARY Corn Burning Stove

Heat Your House With America's Cheapest Energy Source



Authorized Dealers

SUMMIT MACHINERY Leroy M Ash Rt 281 No., Box 325 Summerset, PA 15501 (814) 445-2528	ELI PEACHY Star Rd. Box 541 Millcreek, PA 17060 (717) 483-6475	R.A. BENDER & CO. P.O. Box 42 Pleasant Hall, PA 17246 717-264-4678	ALTERNATE ENERGIES Larry Blaugh RD 3, Box 8068, Rt 72 Jonestown, PA 17038 (717) 865-7128
--	--	--	---

Dealers Wanted

Distributed By:



HIESTAND SUPPLY CO.

RD 1, Box 96, Marietta, PA 17547
(717) 426-1921



DAIRYMEN!

Do You Want Your Milk Represented In The
Marketplace By The Best
Professional Bargainers?

Then Go With The Leader In
Strong Collective Bargaining

NATIONAL FARMERS ORGANIZATION

- ★ Nationwide Bargaining
- ★ All-Commodities
- ★ 3 Milk Checks Each Month
- ★ Trust-Protected Payment
- ★ Up-To-Date Market Information

Call: Ed or Dave **215-258-2904**

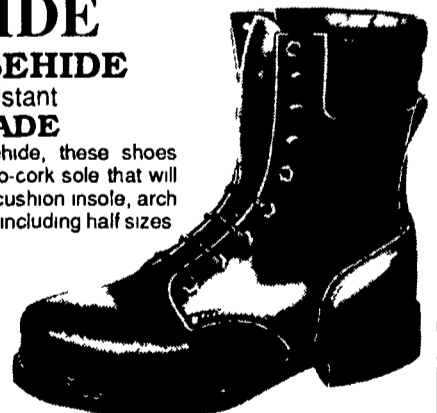
Together, There Is A Way!!!

HORSEHIDE GENUINE HORSEHIDE

Barnyard Acid Resistant
AMERICAN MADE

Made of tough, long wearing horsehide, these shoes
feature a genuine Goodyear welt, nitro-cork sole that will
not track, steel shank, padded collar, cushion insole, arch
support. Ideal for barn use. Sizes 7-13 including half sizes

- 6 Inch D-EE-EEE \$44.95
- 8 Inch D-EE-EEE \$47.95
- 8 Inch Steel Toe-EE Only \$51.95
- 8 Inch Insulated - Features
Snow Grip Sole -
EE & EEE Width Only \$54.95
- 8 Inch Models Pictured



STYLE	Price Ea.	Size & Width	Total
6 Inch	\$44.95		
8 Inch	\$47.95		
Steel Toe	\$51.95		
8" Insulated	\$54.95		
Send Checks To:		Total	
W-R SUPPLY CO. RD No. 4, Box 155 Norwich, N.Y. 13815 (607) 336-6987 "We Pay Postage"		N.Y. Add 6% Tax	
		Grand Total	

NAME _____
ADDRESS _____
CITY _____
STATE _____ ZIP _____

We ship phone orders COD same day. We ship in 24 hours.