



Livestock market and auction news

Virginia Weekly Livestock

Richmond, VA
Thurs., January 7, 1988

MARKETS IN REVIEW: DEC. 31, 1987 THRU JAN. 6, 1988. FEEDER STEERS AND HEIFERS IN VIRGINIA AUCTIONS SOLD STEADY. INSTANCES \$1.00 LOWER WHILE MIDWEST PRICES WERE FIRM TO \$1.00 HIGHER.

SLAUGHTER STEERS AND HEIFERS WERE STEADY TO \$1.00 LOWER AT VIRGINIA AUCTIONS WHILE MIDWEST MARKETS WERE STEADY TO \$1.00 LOWER EARLY, HOWEVER, LATE CLOSE STEADY. BOXED BEEF CUT-OUT VALUE WAS 96 CENT LOWER LAST WEEK AS THE BOXED BEEF CUT-OUT VALUE FELL TO \$99.70/CWT TUESDAY.

COWS AND BULLS IN VIRGINIA AUCTIONS WERE STEADY TO \$2.00 LOWER WHILE MIDWEST PRICES WERE STEADY TO \$1.00 LOWER. BEEF PRODUCTION LAST WEEK WAS 20 PERCENT ABOVE THE PREVIOUS WEEK AND 3.5 PERCENT ABOVE A YEAR AGO. AVERAGE LIVE WEIGHTS WERE 11 LBS. HEAVIER THAN LAST YEAR.

VEAL AND CALF PRICES IN VIRGINIA AUCTIONS WERE STEADY TO \$2.00 LOWER LAST WEEK, FOLLOWING MIDWEST PRICES WHICH WERE STEADY. SLAUGHTER WAS 1 PERCENT ABOVE A WEEK AGO AND 16 PERCENT BELOW A YEAR AGO AS AVERAGE WEIGHTS WERE UNCHANGED FROM A YEAR AGO.

LAMB PRICES AT VIRGINIA AUCTIONS WERE STEADY TO \$2.00 LOWER EARLY AND CLOSED STEADY WITH LAST WEEK AS MIDWEST PRICES WERE \$2.00 TO \$4.00 HIGHER.

SLAUGHTER LAST WEEK WAS 4 PERCENT ABOVE THE PREVIOUS WEEK AND 8 PERCENT ABOVE A YEAR AGO. AVERAGE LIVE WEIGHTS WERE 11 LBS. ABOVE LAST YEAR.

HOG PRICES IN VIRGINIA AUCTIONS WERE \$1.00-2.00 LOWER EARLY AND CLOSED STEADY TO \$1.00 HIGHER THAN LAST WEEK AS MIDWEST AREAS CLOSED \$1.00 HIGHER. PORK PRICES WERE GENERALLY HIGHER DURING THE WEEK. PORK PRODUCTION LAST WEEK WAS 27 PERCENT ABOVE THE PREVIOUS WEEK AND 15 PERCENT ABOVE A YEAR AGO. AVERAGE LIVE WEIGHTS WERE UNCHANGED FROM LAST YEAR.

THE RICHMOND HOG MARKET CLOSED WITH NO TREND REPORTED DUE TO HOLIDAY LAST WEEK. BARROWS AND GILTS US 1-4 200-240 LBS 39.00-39.50. TOTAL RECEIPTS FOR THE WEEK 61 HEAD

THE SOUTHEAST VIRGINIA HOG MARKET CLOSED WITH NO TREND REPORTED DUE TO HOLIDAY LAST WEEK. BARROWS AND GILTS US 1-4 200-240 LBS \$40.00-41.00. TOTAL RECEIPTS FOR THE WEEK 8529 HEAD.

AT HARRISONBURG, LYNCHBURG AND TAPPAHANNOCK HOG PRICES - NO TREND REPORTED DUE TO HOLIDAY - CLOSED \$36.00-40.00. SOWS RANGED \$27.00-30.00 AND BOARS \$20.00 PER CWT.

SLAUGHTER STEERS AND HEIFERS 9%, SLAUGHTER COWS 23%, SLAUGHTER BULLS 2%, SLAUGHTER CALVES AND VEALERS 3%, FEEDER STEERS AND FEEDER HEIFERS UNDER 600 LBS 48%, OVER 600 LBS 15%.

PRICE RANGES FOR VIRGINIA AUCTIONS

SLAUGHTER CATTLE CHOICE STEERS 2-3 1000-1150 LBS 62.00-64.25 CHOICE STEERS 2-3 1150-1300 LBS 63.25-66.00 CHOICE STEERS 2-3 1300 LBS 63.50-66.25 CHOICE HEIFERS 2-3 900-1000 LBS 54.50-60.75 CHOICE HEIFERS 2-3 1000-1150 LBS 57.00-61.00 CHOICE HEIFERS 2-3 1150-1275 LBS 61.00-61.25 UTILITY & COMMERCIAL COWS 42.00-55.00 BULLS 1-2 900-1300 LBS 44.25-56.50 1-2 1300-1600 LBS 50.00-61.00 FEW 48.75 1-2 1600 LBS & OVER 51.00-62.00 SLAUGHTER CALVES AND VEALERS VEALERS - HIGH CHOICE AND PRIME 100-250 LBS 82.00-95.00 GOOD AND CHOICE 100-250 LBS 72.00-87.00 CALVES - GOOD AND CHOICE 250-500 LBS 64.00-79.00 FEW 82.00 SLAUGHTER LAMBS HIGH CHOICE AND PRIME 95-125 LBS 72.25-76.85; BUCKS 71.00 SLAUGHTER HOGS US 2-4 200-250 LBS 37.50-42.00 SOWS US 1-3 300-500 LBS 30.00-41.00 500 LBS & OVER 30.00-38.00 FEEDER CATTLE STEERS; MEDIUM 1 300-500 LBS 82.00-95.00 FEW 77.00 500-700 LBS 72.00-85.50 HEIFERS; MEDIUM 1 300-500 LBS 67.50-78.25 500-700 LBS 62.75-75.00

Shenandoah Valley Livestock

Harrisonburg, Va.
Sat., Jan. 1, 1988

Report supplied by auction

FEEDER CATTLE TREND:
STEERS: M&L-1 300-500 LBS. FEW 81.00-91.00; 500-700 LBS. 72.00-82.00; 700-1000 LBS. 64.50-72.50; HOLSTEIN 300-1000 LBS. 66.00-70.00.

FEEDER BULLS: M&L-1 300-500 LBS. 77.00-89.00.

HEIFERS: M&L-1 300-500 LBS. 70.00-74.50; 500-700 LBS. 67.00-72.50. S-L&M&L-2 300-500 LBS. 66.00-70.50.

STOCK COWS: BABY CALVES: 80.00-137.00.

SLAUGHTER COWS TREND: UTILITY & COMMERCIAL 2-4 45.50-50.50 FEW 50.50-51.50. CANNER & CUTTERS 1-3 40.00-46.50.

LAMBS: TREND: BLUE O HIGH CHOICE & PRIME 76.00; RED O CHOICE 77.75; FEEDER LAMBS CHOICE 82.00-88.00; SLAUGHTER EWES 30.00-40.50.

HOGS: SOWS 1-3 32.00-38.00; BOARS 23.50

Belleville Livestock Auction

Belleville, PA
Wed., January 6, 1988

CATTLE 133...PDA...Compared with last weeks market: Slaughter cows \$1.25 to \$2.50 lower. Standard slaughter steers 53.25-59.25, few Utility 48.75-52.75. Select holstein heifer, individual at 56.50. Breaking Utility and Commercial sl. cows 44.75-47.25, one 48.60, Cutter and Boring Utility 43.50-46, Canner and Low Cutter 37.00-43, Shells down to 35.00. One Yield Grade No. 1, 1515 lb. sl. bull 52.60.

CALVES 106...Few Standard and Good 70/100 lbs. vealers 72.00-79.00, few Utility 65/75 lbs. 60.00-70.00. FARM CALVES: Holstein bulls 90/125 lbs. 80.00-118, one 123.00, few Hol. Heifers 90/100 lbs. 80.00-107.00.

HOGS 149...Barrows and Gilts about .50 lower. US No. 1-2 220/240 lbs. barrows and gilts 40.10-41.10, 1-3 200/240 lbs. 38.60-40.10. US 1-3 385/550 lbs. sows 32.00-34.75. Few Boars 24.00-26.75.

FEEDER PIGS 166...One Lot US No. 1-3 20 lbs. feeder pigs 14.00, 30/40 lbs. 19.00-28.50, 45/65 lbs. 32.50-43.00 --- all per head.

SHEEP 21...Good 40/90 lbs. woolled sl lambs 73.00-88.00, couple 108.00 Few sl ewes 22.00-38.00.

GOATS 0...No Market Test. Holstein Dairy Cows.. Few \$510.00-\$1090.00 --- per head.

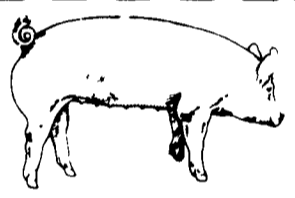


ATTENTION FARMERS

EVERY MONDAY
HATFIELD PACKING CO. and
MOYER PACKING CO.
Will Receive Your
Hogs and Cattle at the
DANVILLE LIVESTOCK MARKET
RD 4, Danville, PA

- We will receive your hogs from 8 AM to 12 Noon every Monday. Your hogs will be weighed and paid for immediately.
- We will also accept your sows & boars.
- Your cattle will be received from 12:30 to 5 P.M. We will either pay you for your cattle immediately or you may sell them dressed weight.
- There will not be a commission or yardage fee deducted from your check.
- You may call our office Monday morning and we will be able to tell you the base price for hogs for the day.

MELVIN M. LEHMAN - Owner
Danville Buying Station
Phone: 717-275-2880



EMERY'S BUYING STATION

OPEN TO RECEIVE
YOUR MARKET HOGS
AT THE GREEN DRAGON MARKET
RD 4, EPHRATA, PA 17522
1 MILE NORTH OF EPHRATA
ON NORTH STATE STREET.

HOURS: MONDAY, TUESDAY, and
WEDNESDAY 7:00 A.M. to 11:30 A.M.
215-458-5677 Residence
717-733-9648 Office

215-458-5677 Residence
717-733-9648 Office

YOU ARE PAID FOR YOUR
HOGS IMMEDIATELY

Ken & Lois Emery, Proprietors

CRIPPLED AND DISABLED

Cows, Steers & Bulls
For Slaughter Under
USDA Inspection

Call Wayne Taylor
717-866-6289
215-286-9400
Lebanon, Berks,
Lancaster & Chester
Counties



I'M NOT
LION...
The Classified
Livestock
Section
Has Beastly
Selections!



Be Wise...
Check our
prices before
you buy!!

SPRAY MATERIALS

We will deliver in
the Delmarva area

- | | | |
|------------------|------------|-------------|
| * ATRAZINE | * BLADEx | * EXTRAZINE |
| * DUAL | * BANVEL | * FURADAN |
| * LASSO | * LOROx | * COUNTER |
| * SUTAZINE | * PARAQUAT | * LORSBAN |
| * ROUND UP | * PRINCEP | * DYFONATE |
| * LASSO-ATRAZINE | | ETC. |

SAVE ON BULK HERBICIDES

- BICEP • LASSO-ATRAZINE • PROWL
- EXTRAZINE • DUAL • BLADEx • LASSO MT

MELVIN R. WEAVER

2213 Leabrook Road, Lancaster, PA 17601
Ph: 717-569-6576 or 898-8354

SWINE PRODUCTION SALES AND SERVICE

Feeding Programs
And Services To
Meet Your Individual
Needs

Computerized
Record Keeping
System



Supplying Farm Fresh
Feeder Pigs

Marketing and Hedging
Services

Marketing of Genesis
Breeding Stock

Grain Purchasing
And Exchange

Developing Individual
Financial Programs

Quality Products And Services - Working For YOU

Elizabethtown
(717) 367-1525

419 West High Street
Elizabethtown, PA 17022

PA Toll Free
1-800-468-5524

Shippensburg
(717) 532-7845