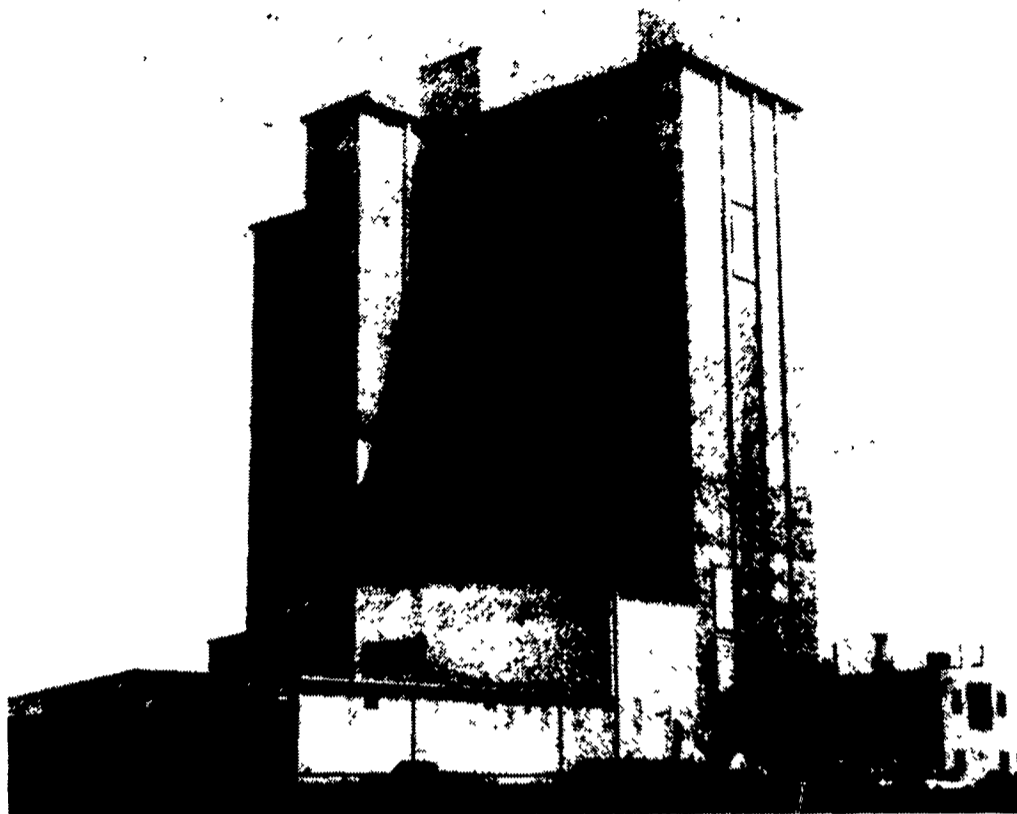
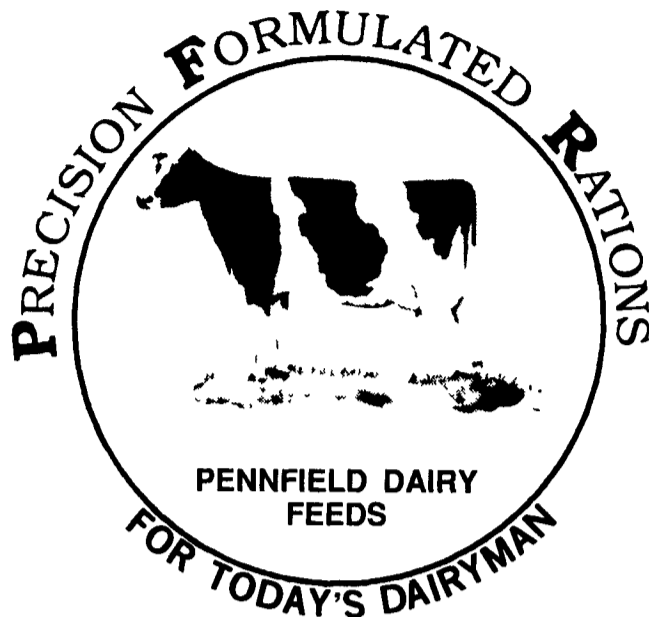


A DAIRY RATION BALANCED FOR EACH DAIRY FARM



Mt. Joy Mill



Pennfield's new Mt. Joy feed mill has a feed production line specifically designed by Pennfield to produce PFR (Precision Formulated Rations) custom formulated dairy feeds balanced for each dairyman's feeding program. This customized ration will be pelleted to prevent separation of vitamins and minerals from the feed ingredients. The ration will be balanced to meet specific needs such as **PROTEIN, BY-PASS PROTEIN, MINERALS, STARCH LEVEL, ADDED FAT, NDF (Neutral Detergent Fiber), ADF (Acid Detergent Fiber), PALATABILITY, TOTAL RATION DENSITY, and FEEDING PROGRAM PROFITABILITY.**

PENNFIELD DAIRY PROGRAM PLUSES:

- + "NO CHARGE" - CERTIFIED FORAGE TESTING LAB.
Pennfield's Forage Testing Lab is certified by the NAHTA (National Alfalfa Hay Testing Assoc.)
- + Forage results mailed directly to the farm.
- + Professionally formulated dairy feeding programs.
- + Precision formulated rations balanced to individual dairy farm's forage program.
- + Order dept. open 24 hours per day Monday 5 AM through Saturday 5 AM. Answering service on weekends.
- + Grain exchange program for Corn - Barley - Oats
- + No hauling charge for grain exchange customers
- + Dairy Terms: 2½ % Cash Discount - due 15th of following month.
- + Well trained "Dairy Service Specialists" who can work with you to help solve problems when they occur.
- + Feed quality guaranteed.

#508 16% Golden Flake \$154.08 Net/Ton	#515 16% Textured Dairy \$158.66 Net/Ton	#519 20% Dairy Pellet \$175.70 Net/Ton	#533 Pellet 32% Dairy Conc. \$246.42 Net/Ton	#538 Meal 38% Dairy Conc. \$275.15 Net/Ton	#528 Pellet 28% Hi-Yield Conc. Fat Added/Buffers \$265.01 Net/Ton
---	---	---	---	---	---

Includes 8 ton volume discount and cash discount of 2½ % due 15th following month.
Prices effective Dec. 14, 1987 and subject to change with grain markets. Deduct additional \$3.00 per ton if paid in 10 days.

From PA
1-800-732-0467

From MD, NJ, DE
1-800-233-0202



pennfield feeds
Quality — Service — Value