

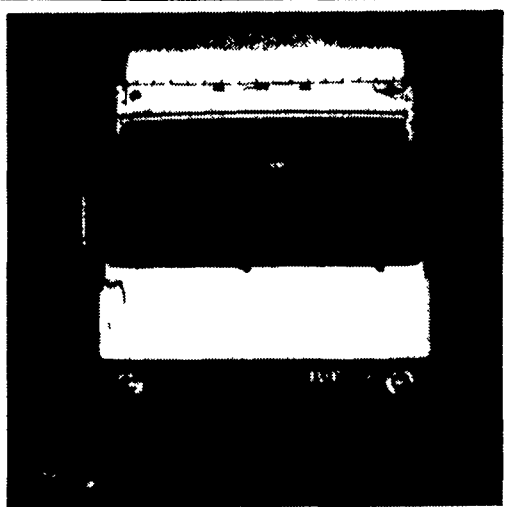
35 TRUCKS & TRAILERS

1981 GMC truck, 16' Van body, V8, 2 spd. rear, 21,000 GVW, \$4,800. 717-225-3798

1981 Int. 1854 dsl., 466, 5&2, p. steering, 30,000 GVW, 1000x20 tires; 1977 Int. 1800, 446 gas V8, 5&2, p. steering, air brakes, 31,000 GVW, 1000x20 tires. 301-877-9889.

1982 Dodge Maxi Van, 15 passenger window van, 1 ton, runs good, new tires, new exhaust, has rough interior, can use w/or without bench seats. Asking \$3,000. 609-965-2884

1985 Ford F150 Lariat XLT pickup w/AC, PS, PB, black and chrome, lots of extras, very clean, \$8400; 1977 Montone 28' aluminum 3 axle dump trailer w/new hydraulic cylinder \$10,900. 1-800-356-7655.



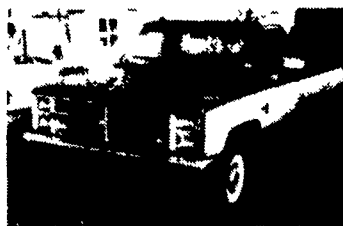
FOR SALE

1982 Iveco Van-Body Truck 5SP, light body damage, runs, and drives 28,000 miles.

\$3200

215-683-7943

USED TRUCKS



'86 Chevy C-30 Silverado, Auto., AC, Red/White, 7,000 Mi., 350 FI.

\$11,900



'85 GMC C2500 Sierra, 350 Auto., 21,000 Mi.

\$8,600

MARTIN'S AUTO SALES

725 E. Main St., New Holland, PA 17557
(717) 354-9967

35 TRUCKS AND TRAILERS

AIR-HYD. Specializing 10,000 PSI HOSE In

• JACKS • CYLINDERS • PUMPS

REPAIRS AND REBUILDING
New & Used
Wholesale & Retail

Lincoln-Walker
• Ausco • HeinWerner
Weaver • Blackhawk
• OTC • Enerpac

BEARTOWN HYDRAULICS

Rt. 322, Midway Between Honey Brook & Blue Ball
Mon., Tues., Thurs. & Fri. 7 AM - 5 PM
Call for Wed., Sat. & Even. Hours
(717) 354-5649 Daily UPS Pickup
Ron Zimmerman



1974 DODGE

1 ton power wagon, 24,000 actual miles, 318, V-8, 4 speed, 10' stake dump - \$5,250.00.

Phone 301-293-2577

FOR SALE



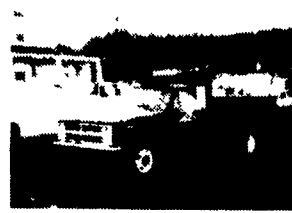
1984 CHEVY C30
With 12 ft. Morgan van body, 350 auto, PS, PB, 49,000 miles, local 1 owner, ex. cond.

\$9,600



1986 FORD F250
¾-ton, 300 6-cyl., HD, 4-spd. PS, PB, AM-FM, dual tanks, 33,000 miles, new radials, ex. cond.

\$8,600



1986 CHEVY C30
With 8½ ft. dump body, 350 4-speed, PS, PB, AM-FM, dual tanks, 10,000 miles.

\$12,900



1987 FORD F350
Dual wheel, cab & chassis, 460 auto., PS, PB, dual tanks, 11,000 GVW, radial tires, 150 miles with factory warranty.

\$11,900



1985 FORD F350
Dual wheel short wheel base, cab & chassis, 460 4-speed, PS, PB, 31,000 miles, new radials.

\$8,600



1986 CHEVY C20
HD, ¾-ton with new reading utility body, 350 4-speed, PS, PB, ladder rack, ex. cond.

\$10,995.00

A & J AUTO SALES

798 East Main Street - Rt. 322 East
Ephrata, PA 17522
717-733-2873

FOR SALE

1985 F250 diesel, 42,000 miles, auto. trans., full power & AC, excellent condition, good for heavy duty work or pulling camper or trailer. Must drive to appreciate. \$7,900 O.B.O.

215-589-2719 or 215-488-1020

ROPE IN SOME EXTRA CASH!

Advertise With A Lancaster Farming CLASSIFIED AD
Phone 717 394 3047 or 717 626 1164



Your Livestock Trailer Source On The East Coast

M.H. Eby builds reliable livestock trailers to your custom specifications. With heavy-duty slat-and-post construction and an aerodynamic front end, Eby POTs are made to take a beating. Call today to order your 1988 model or choose from our nice selection of used trailers.

USED TRAILERS

- 1983 Eby - 48'x13'2" Cattle-Hog Drop Deck
- 1979 American - 45'x13'2" Cattle-Hog Drop Deck
- 1977 American - 43'x12'6" Livestock Trailer
- 1974 Wilson - 43'x13' Cattle-Hog Drop Deck
- 1965 Hobbs - 40'x13'4" Shallow Drop

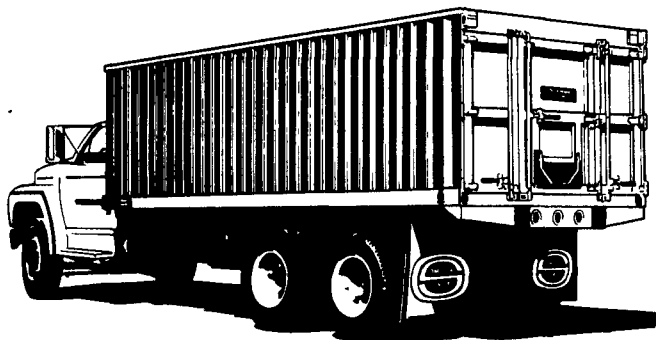
USED EBY ALUMINUM LIVESTOCK BODIES SALE



- 20' Eby, 6'6" Height,
- 26' Eby, 7' Height,
- ½ Double Deck

M.H. EBY, INC.
P.O. Box 127
Blue Ball, PA 17506
(717) 354-4971

"CLEAN FLOW" Aluminum Bodies



by OMAHA STANDARD

Backed by more than 60 years' experience in truck body manufacturing, this is the aluminum body that sets the standard for the industry. With 92¼ inches of unobstructed inside width, this rugged, lightweight body lets you haul more grain or bagged or palletized commodities and save fuel doing it.

With 60" or 72" high, vertically corrugated, splice-free sidewalls, three-piece full opening rear doors, swing-out header, trailer-type aluminum flooring and "I" beam cross members, this body's built for rugged field work and continuous road hauling.

"Clean Flow" design of the extra deep 30" sidewall corrugations allows complete emptying with no sharp corners for grain to hang up.

Available at:

FARMERSVILLE EQUIPMENT INC.

RD 4, East Farmersville Road
Ephrata, PA 17522
Located in the Village of Farmersville,
Lancaster County
717-354-2150

Omaha Standard



NEW

REDESIGNED 1988 TIMPTE GRAIN HOPPER



Got Grain? Then get the trailer that is Timpte tough... the Super Hopper. It's not only built to take it...it's also built to cut fuel costs. The Super Hopper is lightweight and aerodynamically designed to reduce wind drag. When there's grain to be hauled, Timpte does the hauling' best and pulls a lot easier than the rest.

USED HOPPERS FOR SALE

- 1984 Crescent Steel, 42'x65" Sides, Hopper Bottom
- 32' Level Floor Grain Trailer

M.H. EBY, INC.
Box 127, Blue Ball, PA 17506 (717) 354-4971