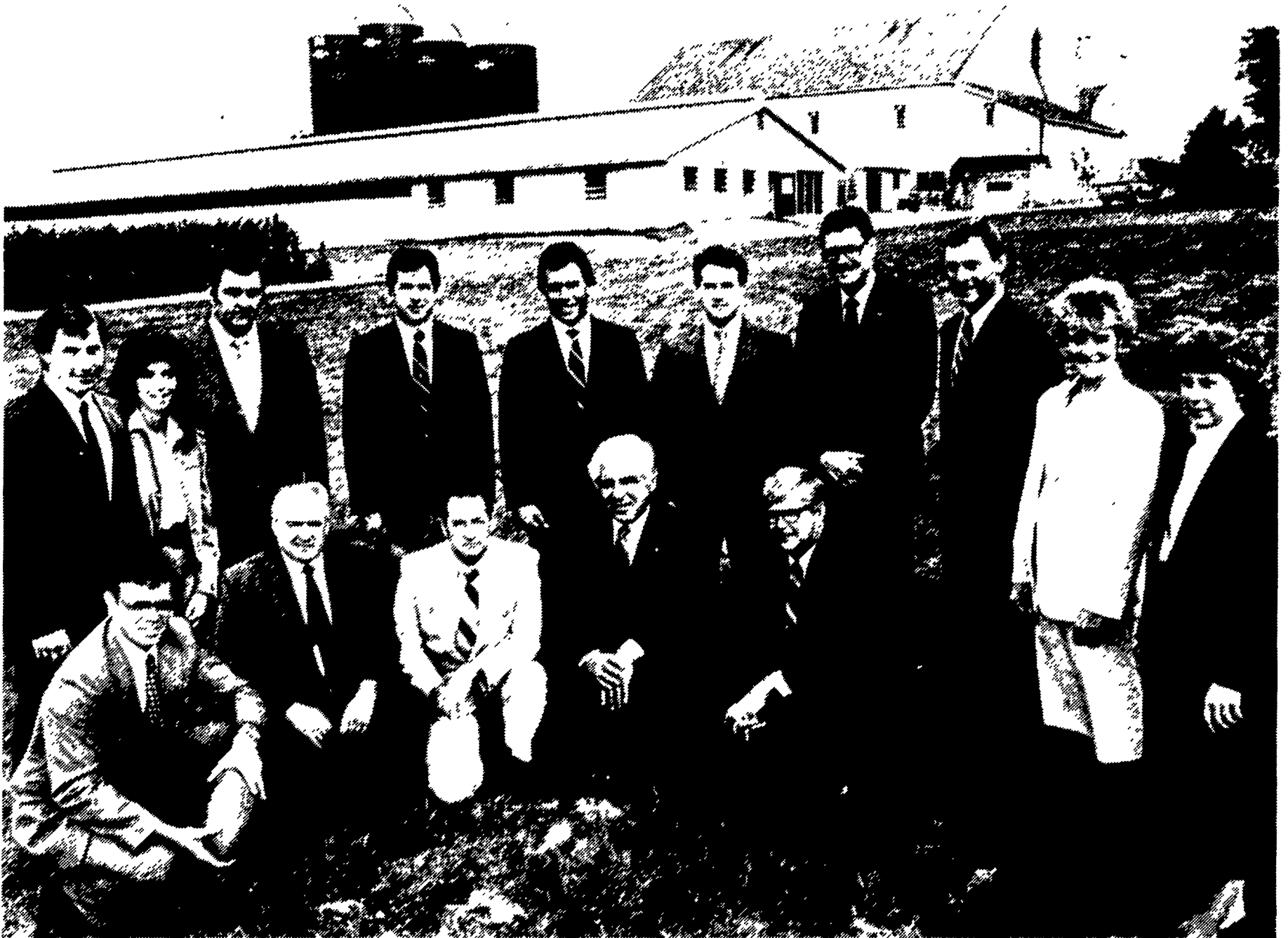


A COMMITMENT TO AGRICULTURE.



The Hamilton Bankwide Agricultural Team at the Robert H. Rohrer and Son Farm in Washington Boro, Lancaster County. (Front row—left to right) Darvin E. Boyd, Vice President and Director, Agri-Finance Department, William J. Lancy, Marketing Manager, Christiana Branch servicing Lancaster and Chester Counties, Robert E. Kline, Assistant Vice President and Marketing Manager, Mount Joy Branch, Lancaster County, Thomas E. Papp, Jr., Marketing Manager, Kutztown and Lyons Branches in Berks County, Robert J. Koch, Assistant Vice President and Marketing Manager, Richland branch in Lebanon County. (Second row) Ted Bowers, Agri-Finance officer, Suzanne Trower, Secretary, C. Donald Wissler, Jr. and Dennis R. Lefever, Assistant Vice President and Marketing Manager respectively, Quarryville Branch in Lancaster County, Roger M. Rohrer, Assistant Vice President, Agri-Finance Department, Jeffrey R. Troutman, Assistant Vice President, Agri-Finance Department, Bradley Kline, Marketing Manager, Red Lion and Stewartstown Branches in York County, John E. Moose, Vice President and Assistant Director, Agri-Finance Department, Patricia Trout, Business Account Technician, Agri-Finance Department, and Lisa Shelly Smith, Administrative Assistant, Agri-Finance Department. The Agri-Finance Department serves other counties in the Hamilton Bank servicing area as well.

**AN EXPERIENCED
BANKWIDE
AGRICULTURAL
TEAM TO SERVE YOU.**

Hamilton Bank believes that agriculture is the backbone of America. In Pennsylvania, agriculture is our number one industry.

We recognize the significant role farm and Agri-business plays in contributing to a viable economy. That is why Hamilton Bank is so interested

in supporting agriculture.

Your friend from Hamilton Bank knows that with the value of agricultural production rising every year the need for capital goes up with it.

Therefore, the need for sound financial planning rises, too. He will work with you on the full range of financing, credit, trust

and estate services, designed to help your business.

Hamilton Bank's business is to tailor a program to fit your needs . . . comfortably.

If you believe that agriculture is still the backbone of America, talk to your friend at Hamilton Bank. You'll find he feels the same way.



Hamilton Bank

A CoreStates Bank

Member FDIC