



Livestock market and auction news

Shenandoah Valley Livestock

Harrisonburg, Va.

Saturday, Nov. 14, 1987

Report supplied by auction

FEEDER CATTLE TREND: 300-500 LBS. \$2-6 HIGHER; OTHER WEIGHTS STEADY TO \$2 HIGHER.

STEERS: M&L-1 300-500 LBS. 80.00-90.00; 500-700 LBS. 68.00-81.00; 700-1000 LBS. 65.00-71.75. S-L&M&L-2 300-500 LBS. 70.00-82.00; 500-700 LBS. 62.00-72.00; 700-1000 LBS. 62.00-65.00; HOLSTEIN 300-1000 LBS. 58.00-68.00. FEEDER BULLS: M&L-1 300-500 LBS. 78.00-79.50; 500-700 LBS. 63.00-68.00. S-L&M&L-2 300-500 LBS.

65.00-70. HEIFERS: M&L-1 300-500 LBS. 72.00-79.00; 500-700 LBS. 65.00-76.00; 700-1000 LBS. 62.00-65.00. S-L&M&L-2 300-500 LBS. 68.00-70.00; 500-700 LBS. 62.00-68.00. STOCK COWS: BEEF: MEDIUM FRAME 400.00-435.00; SMALL FRAME 325.00-360.00; BABY CALVES: 35.00-118.00. SLAUGHTER COWS TREND: UTILITY & COMMERCIAL 2-4 39.00-45.00; CANNER & CUTTERS 1-3 34.00-41.00. SLAUGHTER BULLS 1&2 50.00-56.00. LAMBS: TREND: 1/4 LOWER. BLUE O HIGH CHOICE & PRIME 63.35; RED O CHOICE 68.50; FEEDER LAMBS CHOICE 79.50-81.00.

HOGS: US 1-3 200-240 LBS. 40.60; SOWS 1-3 35.00-40.00; BOARS 25.00. VEALS: CHOICE & PRIME 84.00-92.00. SLAUGHTER CALVES: GOOD & CHOICE 61.00-70.00.

PRICE RANGES FOR VIRGINIA AUCTIONS SLAUGHTER CATTLE CHOICE STEERS 2-3 1000-1300 LBS 61.00-65.00 CHOICE STERS 2-3 1300 LBS & OVER 61.50-65.25 CHOICE HEIFERS 2-3 900-1100 LBS 60.00-65.25 CHOICE HEIFERS 2-3 1100 LBS & OVER 59.50-64.75 UTILITY & COMMERCIAL COWS 35.00-50.00 BULLS 1-2 900-1300 LBS 45.00-56.00; 1-2 1300-1600 LBS 48.00-56.00 1-2 1600 LBS & OVER 48.50-59.50 SLAUGHTER CALVES AND VEALERS VEALERS - HIGH CHOICE AND PRIME 100-250 LBS 82.00-109.50 GOOD AND CHOICE 100-250 LBS 66.00-81.50 CALVES - GOOD AND CHOICE 250-500 LBS 58.00-75.00 LAMBS HIGH CHOICE AND PRIME 95-125 LBS 63.20-65.00 SLAUGHTER HOGS - US 2-4 200-250 LBS 40.25-41.10 SOWS US 1-3 300-500 LBS 31.00-40.00 500 LBS & OVER 35.00-45.00 FEEDER CATTLE STEERS; MEDIUM 1 300-500 LBS 78.00-93.50 500-700 LBS 66.00-82.00 HEIFERS; MEDIUM 1 300-500 LBS 65.00-80.00 500-700 LBS 63.00-76.00.

Virginia Weekly Livestock

Roanoke, Virginia

Thursday, November 19, 1987

WEEKLY REVIEW IN VIRGINIA MARKETS IN REVIEW; NOV. 12-18, 1987. FEEDER STEERS AND HEIFERS IN VIRGINIA AUCTIONS SOLD STEADY TO \$6.00 HIGHER WHILE MIDWEST PRICES WERE STEADY TO \$4.00 HIGHER. SLAUGHTER STEERS AND HEIFERS WERE STEADY TO \$3.00 HIGHER AT VIRGINIA AUCTIONS WHILE MIDWEST MARKETS WERE MIXED \$1.50 HIGHER TO \$1.00 LOWER. BOXED BEEF PRICES WERE \$2.51 HIGHER LAST WEEK AS THE BOXED BEEF CUT-OUT VALUE REACHED \$103.16/CWT. MONDAY. COWS AND BULLS IN VIRGINIA AUCTIONS WERE STEADY TO \$5.00 HIGHER WHILE MIDWEST PRICES WERE STEADY TO \$1.00 HIGHER. BEEF PRODUCTION LAST WEEK WAS 2% BELOW THE PREVIOUS WEEK AND 1% BELOW A YEAR AGO. AVERAGE DRESSED WEIGHTS WERE 34 LBS. HEAVIER THAN LAST YEAR. VEAL AND CALF PRICES IN VIRGINIA AUCTIONS WERE STEADY LAST WEEK, FOLLOWING MIDWEST PRICES WHICH WERE STEADY TO \$3.00 HIGHER. SLAUGHTER WAS UNCHANGED FROM A WEEK AGO AND 14% BELOW A YEAR AGO AS AVERAGE WEIGHTS WERE 5 LBS. HEAVIER THAN A YEAR AGO. LAMB PRICES AT VIRGINIA AUCTIONS WERE STEADY TO \$4.50 HIGHER AS MIDWEST PRICES WERE STEADY TO \$6.00 LOWER. SLAUGHTER LAST WEEK WAS 4% ABOVE THE PREVIOUS WEEK AND LESS THAN 1% BELOW A YEAR AGO. AVERAGE WEIGHTS WERE 1 LB. HEAVIER THAN LAST YEAR. HOG PRICES IN VIRGINIA AUCTIONS WERE STEADY THIS WEEK. PORK PRICES WERE STEADY TO \$9.00 LOWER DURING THE WEEK. PORK PRODUCTION LAST WEEK WAS 1% BELOW THE PREVIOUS WEEK AND 13% ABOVE A YEAR AGO. AVERAGE WEIGHTS WERE 3 LBS. LIGHTER THAN LAST YEAR.

THE RICHMOND HOG MARKET CLOSED \$1.00 LOWER THAN LAST WEDNESDAY WITH BARROWS AND GILTS US 1-4 200-240 LBS \$39.00-39.50. TOTAL RECEIPTS FOR THE WEEK 233 HEAD. THE SOUTHEAST VIRGINIA HOG MARKET CLOSED \$1.00 LOWER THAN LAST WEDNESDAY WITH BARROWS AND GILTS US 1-4 200-240 LBS AT \$39.50-41.00 PER CWT. TOTAL RECEIPTS FOR THE WEEK 14,551 HEAD AT HARRISONBURG, LYNCHBURG AND TAPPAHANNOCK HOG PRICES WERE 50 CENT TO 1.00 LOWER THAN LAST WEDNESDAY AT \$39.00-41.50. SOWS RANGED \$30.00-32.00 AND BOARS \$26.00 PER CWT.

SLAUGHTER STEERS AND HEIFERS 2%; SLAUGHTER COWS 17%; SLAUGHTER BULLS 1%; SLAUGHTER CALVES AND VEALERS 2%; FEEDER CATTLE UNDER 600 LBS 63%, OVER 600 LBS 15%.

Regional Hay

November 16, 1987

Eastern, Pa.

On-Farm Sales

HAY & STRAW MARKET FOR EASTERN PA. (ALL HAY NO. 2 AND BETTER PRICES PAID BY DEALERS AT THE FARM AND PER TON.) HAY AND STRAW FULLY STEADY.

ALFALFA 75.00-110.00; MIXED HAY 65.00-90.00; TIMOTHY HAY 70.00-90.00; STRAW 60.00-80.00; MULCH 20.00-40.00.

LANCASTER CO. AUCTIONS

SUMMARY OF LANCASTER CO. HAY AUCTIONS FOR WEEK ENDING 11/13/87. PRICES PER TON: LOADS: 178 HAY, 55 STRAW, AND 24 EAR CORN.

ALFALFA 70.00-122.00, *140.00; MIXED HAY 61.00-120.00; TIMOTHY HAY 88.00-147.00; STRAW 76.00-106.00; EAR CORN 61.00-85.00.

CENTRAL PA. HAY AUCTIONS

SUMMARY OF CENTRAL PA. HAY AUCTIONS FOR WEEK ENDING 11/13/87. PRICES PER TON: LOADS: 77 HAY, 13 STRAW AND 11 EAR CORN.

ALFALFA 75.00-110.00, *140.00; MIXED HAY 64.00-100.00, *120.00; TIMOTHY HAY *65.00-100.00; STRAW 64.00-100.00; EAR CORN 55.00-62.50.

Belleville Hay

Wednesday, Nov. 18

Belleville, PA

Report Supplied by Auction

47 LOADS HAY. ALFALFA, 85.00-160.00; MIXED HAY, 60.00-110.00; STRAW, 87.50, 3 LOADS EAR CORN, 65.00-72.50.

Roth Hay

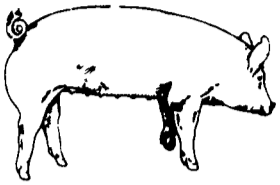
Kirkwood, PA

Thurs., Nov. 19

Report Supplied by Auction

6 LOADS. STRAW, 64.00 PICK-UP LD.; ALFALFA, 70.00-104.00.

EMERY'S BUYING STATION



OPEN TO RECEIVE YOUR MARKET HOGS

AT THE GREEN DRAGON MARKET RD 4, EPHRATA, PA 17522 1 MILE NORTH OF EPHRATA ON NORTH STATE STREET.

HOURS: MONDAY, TUESDAY, and WEDNESDAY 7:00 A.M. to 11:30 A.M. 215-458-5677 Residence 717-733-9648 Office

215-458-5677 Residence 717-733-9648 Office

YOU ARE PAID FOR YOUR HOGS IMMEDIATELY

Ken & Lois Emery, Proprietors

WE EXPLODE THE MYTHS ABOUT...

There are many myths floating about manure management today. Most of these are just that - myths. At U S Agri-Systems they explode the myths. They're only interested in one thing - the solution to your problem.

At U S Agri-Systems the myths are exploded with

state of the art equipment that is time tested and proven. Along with this equipment you'll be getting 15 years of manure management knowledge and experience. Don't rely on myths to solve your problems. Contact U S Agri-Systems Toll Free 1-800-222-2948.

ATTENTION FARMERS

The New Way To Market Your Livestock

HATFIELD PACKING CO. AND MOYER PACKING CO. Will Receive Hogs Will Receive Cattle

At The

BLAIR-BEDFORD BUYING STATION

RD 1 Martinsburg, Pa

Thanksgiving Week Sale Day Wednesday, November 25

MONDAYS - Hogs 8 AM to 11:30 AM Cattle & Calves 8 AM to 3 PM

THURSDAYS - Cattle & Calves 8 AM to 3 PM

- No commission or yardage fees deducted from check
- Livestock weighed and paid for immediately
- You may call our office sale day for prices

DALE R. HOOVER - Owner

Business 814-793-3077 Residence 814-793-2657

ATTENTION FARMERS

EVERY MONDAY HATFIELD PACKING CO. and MOYER PACKING CO.

Will Receive Your Hogs and Cattle at the DANVILLE LIVESTOCK MARKET

RD 4, Danville, PA

- We will receive your hogs from 8 AM to 12 Noon every Monday. Your hogs will be weighed and paid for immediately.
- We will also accept your sows & boars.
- Your cattle will be received from 12:30 to 5 P.M. We will either pay you for your cattle immediately or you may sell them dressed weight.
- There will not be a commission or yardage fee deducted from your check.
- You may call our office Monday morning and we will be able to tell you the base price for hogs for the day.

MELVIN M. LEHMAN - Owner Danville Buying Station

Phone: 717-275-2880

SWINE PRODUCTION SALES AND SERVICE

Feeding Programs And Services To Meet Your Individual Needs

Computerized Record Keeping System



Supplying Farm Fresh Feeder Pigs

Marketing and Hedging Services

Marketing of Genesis Breeding Stock

Grain Purchasing And Exchange

Developing Individual Financial Programs

Quality Products And Services - Working For YOU

419 West High Street Elizabethtown, PA 17022

Elizabethtown (717) 367-1525

PA Toll Free 1-800-468-5524

Shippensburg (717) 532-7845

CRIPPLED AND DISABLED

Cows, Steers & Bulls For Slaughter Under USDA Inspection

Call Wayne Taylor

717-866-6289 215-286-9400

Lebanon, Berks, Lancaster & Chester Counties

HAY & STRAW SALE

12:00 Noon

Every Wednesday Westend of Avondale at the intersection of Baltimore Pike and Route 41.

Harvey Z. Martin 215-268-3604 (Office) 215-445-5303 (Residence)

KING'S AUCTION

KIRKWOOD

Hay, Straw and Grain Auction

EVERY TUESDAY 12:00

Located Rt. 472 6 miles south of Quarryville or 6 miles north of Oxford corner of Rt. 472 and Noble Road at Rouse Tobacco Station.

Lloyd H. Kreider, Auctioneer AU-000513L.

No out of state checks ALL TRUCKERS AND FARMERS WELCOME