

35 TRUCKS & TRAILERS

'85 Chevy C10 1/2 ton 4x4, 305 auto, PB, PS, AM-FM, 6,100 GVW, \$8,900 717-733-2873

1980 GMC Sierra pickup, 57 dsl, automatic, PS, brakes and air, 16,000 miles on new engine Good farm truck \$3295 717-933-8044 after 8PM.

1983 14' Stainless Steel Stoltzfus Spreader w/13' booms on a 1976 9000 Ford w/290 Cummins engine 717-394-1257

1984 Ford F350, dual wheel, 12' flatbed Dsl 6.9 engine, 4SP transmission, set up with gooseneck and bumper trailer hitch Well maintained, high mileage unit \$5,900 215-932-0445 days

1984 Peterbilt 362 double sleeper, 110" bunk, 3406B, 400 Cat, RTO14613, 3.90 ratio, 11x24.5 Alcoa budds, air rde suspension, 190" wheel base, 80% rubber, 80% brakes. Must Sell! 717-530-1884

1985 Ford F-700 truck with 28' JerrDan rollback, excellent condition, 40,000 miles, 8.2 Detroit with 5+2, \$25,000 301-848-6558

FOR SALE

1972 GMC grain truck, 7500 series, 33,000 GVW, power steering, air brakes, 16' Midwest grain body w/18 ton holst, 10-20 tires, clean truck. 717-786-1119

'74 IH cab over diesel tandem tractor & tri axle bulk trailer, good working condition. (Combine auger will reach over top of trailer) \$3,200. for both. 717-534-1253

'77 Dodge power wagon 4x4, 5 pass. club cab, 56,000 original miles, 360, V-8, PS, PB, fac air, auto. trans., new radials, nice shape Asking \$4,995. 301-398-2946.

'79 Marmon COE 110' bunk 400BC 15SP Neway air-ride alum. budds \$20,000 or trade for JD tractor of equal value 2-42' refer trailers w/o units 717-664-3222

'84 Chevy Scottsdale C30, 17' Jerr-Dan rollback, 454 4 spd., PS, PB, air, AM-FM cassette stereo, dual tanks, hyd tow bar, 12,000 miles, like new 717-733-2873

1959 Mack H-67 S/A Jake Racor fuel/air restored, new rubber, wetline, 1948 Furehauf dump trailer, 3 parts trucks \$6750 OBO. 717-597-8511

1973 F700 dump truck, GVW 26,000 lbs., new paint, looks & runs like new, \$10,500. Will send picture, perfect condition Bucks Co 215-348-2123

RINGO HILL FARMS

Pleasant Valley Route 212, Quakertown, Pa. 18951

215-346-7340

FARM & LANDSCAPE EQUIPMENT

Utility Trailers



From \$650

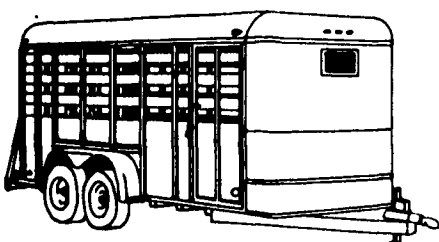


From \$1,500



From \$1,500

Horse Trailers



Trailer Accessories
Hitches & Installation
Available

MEYERS SNOW EQUIPMENT IN STOCK

SNOW PLOWS

8 ft. Power Angle Lights & Controls \$1800 Installation \$200

SALT SPREADERS

Tail Gate Hopper 600# \$1000 Bed Hopper w/Auger 3/4 Yd. \$2500

Snow and Grader Blades

Size	
5 Ft.....	\$195*
6 Ft.....	\$220*
7 Ft.....	\$240*
8 Ft.....	\$350*

Brush Hog Rotary Mowers

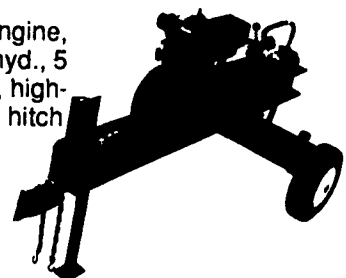
Available in 4', 5', 6' and 7' cutting widths. Three-point lift and pull-type models. • strong and versatile enough to handle all grass, weeds, stubble, stalks and brush • constructed of a 7 gauge unitized deck, reinforced with heavy angle and a heavy duty A-frame •flex hitch • 1/2 x3" suction blades on a round blade carrier and a 1 3/8" spline quick disconnect PTO shaft

3 Point Hitch Models

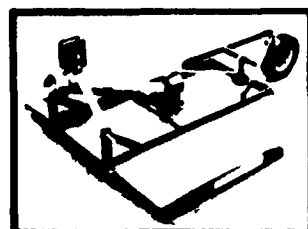
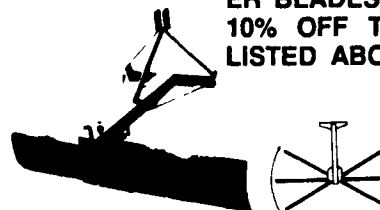
Size		Trailer
4 Ft.....	\$450	
5 Ft.....	\$550	
5 1/2 Ft.....	\$600	
6 Ft.....	\$700	Size
7 Ft.....	\$1600	5 Ft..... \$700
		6 Ft..... \$850

Log Splitter

8 HP industrial engine, 17 ton, two stage hyd., 5 gal. hyd. reservoir, high-way tires, 2" ball hitch \$900



NOVEMBER SPECIAL* ALL SNOW AND GRADER BLADES ON SALE - 10% OFF THE PRICES LISTED ABOVE!



Mark VII - Pickups - Broncos - Bronco II - Stake Body - Crew Cab -

SHEEHY FORD LINCOLN MERCURY INC.

For All Your Farming Transportation Needs Through The F800 Series

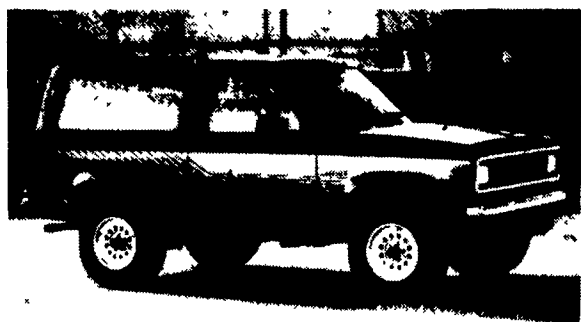
BRONCOS DIESEL PICKUPS CHASSIS CAB CARGO VANS 4x4 RANGERS PICKUPS
BRONCO II SUPER CAB CREW CAB STAKE BODY BOX VANS XLT CUSTOM VANS

SHEEHY HOTLINE 717-272-7671

Unless This Emblem Is On Your Car Or Truck You Probably Paid Too Much

SHEEHY LEBANON

20th & Cumberland St. - Lebanon



1988 New XL Sport Bronco II



New For 1988 Is An STX 4x2 Ranger 6 In Stock To Choose From

\$500 Rebate
On All F150, F250,
and F350's With
Manual Transmissions

\$500 Rebate
On All Rangers And
Bronco II's

Over 75 Used Trucks,
Including 4x4's
In Stock For
Clearance Sale



Snow Plows Arriving Daily



4 WD Pickups In Stock

Custom Vans - XLT - Grand Marquis - Marquis -

Lynx - Topaz - Diesel Pickups - Mustang - T Bird

Tempo - Cougar - Continental - Town Car - 4x4 - Box Van - Rangers -