

Huntingdon Celebrates Farm City Week

BETSY YODER

Huntingdon Co. Correspondent
HUNTINGDON — Rural and urban dwellers were brought together Thursday, November 12 in Huntingdon County for their annual Farm City banquet. The event is co-sponsored by the Kiwanis Club and the Dairy Promotion Committee.

The highlight of the evening was the honoring of two farm couples for their outstanding contributions to their communities.

Recipients of the Grange Family Award presented by John Keith, State Deputy Grange Master, were Ruth and Eugene Garner of Marklesburg. The Garners are active in

the Lincoln Grange where he currently serves as treasurer and she as chaplain. Eugene is master of Pomona Grange, the group which includes members of all subordinate granges in Huntingdon County. Ruth holds the office of Pomona.

The Garners are also active members of the Zion United Church of Christ and their communities. Eugene serves as president of the Marklesburg Borough Council.

The Farm-City Distinguished Service Award was presented to Max and Eleanor Isenberg of Alexandria where they are engaged in a dairy farming opera-

tion. The couple are active members and supporters of the Dairy Promotion Committee, spending many hours each year working in various aspects of promoting milk.

Each year the Kiwanis Club and the Dairy Promotion Committee see that each third grade student in Huntingdon County receives a tour of a local dairy farm and an informative talk from the dairy princess.

Mr. and Mrs. Ross Metz praised clubs' efforts and made and presented plaques to the following farmers who help to make it all possible: Max Weller Family, Richard Hess Family, Gibboney Farms, Max and Eleanor Isenberg,

Oliver Farms, Baney Brothers, LeCrone Farms, Tom and Gloria Coffman, Raymond Hall Family, Phillip Yohn Family, Willard Yoder Family, Ed and Sharon Parsons, Ron Baker Family, Fred Freece Family, John Lynn Family, Larry and Brucette Metz, Eberle Brothers, Jim and Barb McMath and John Kyper Family.

Lolly Long, a former Huntingdon countian, who currently serves as the state Dairy Promotion coor-

dinator reported on several state campaigns. The White Lite campaign has been a great success; causing milk consumption in Pittsburgh to increase by 10%. The next promotion is getting milks-hake machines into school cafeterias.

Harold Davis who took a trip to the Soviet Union with the People to People Program rounded out the evenings activities with a talk and slide show from his tour.



ARMSTRONG FARM MUSCLE

All Orders Over \$250 Delivered Free To Your Farm! (Orders Under \$250... Only A Small Extra Fee)

We Install Tires On Your Farm

- Centre Hall • Williamsport
- Sunbury • Allentown
- North Penna. • New Jersey
- Northern Maryland

Ask About Our 5 Year Guarantee On Rear Tires Strongest In The Country

OFFER EXTENDED...

FREE MOUNTING ON PAIRS Super Hi-Power Lug Radials

14.9R28 10 Ply	\$325.00
16.9R28 10 Ply	\$399.00
18.4R34 6 Ply	\$399.00
16R38 6 Ply	\$428.00
18.4R38 6 Ply	\$458.00
18.4R38 8 Ply	\$489.00
18.4R28 10 Ply	\$448.00
20R34 8 Ply	\$538.00
20.8R38 6 Ply	\$648.00
20.8R38 10 Ply	\$699.00

ARMSTRONG FARM MUSCLE

ARMSTRONG FARM TIRES

Hi Power Lug

Now! 5-Year Warranty

11.2x24, 4 Ply	\$108.00
11.2x24, 6 Ply	\$125.00
14.9x24, 4 Ply	\$161.00
14.9x24, 6 Ply	\$172.00
14.9x24, 8 Ply	\$200.00
16.9x24, 6 Ply	\$200.00
16.9x24, 8 Ply	\$220.00
14.9x28, 6 Ply	\$180.00
18.4x28, 6 Ply	\$247.00
23.1x28, 6 Ply	\$525.00
11.2x28, 4 Ply	\$120.00
12.4x38, 4 Ply	\$137.00
13.6x28, 4 Ply	\$150.00
13.6x28, 6 Ply	\$165.00
13.6x28, 8 Ply	\$195.00
14.9x28, 4 Ply	\$185.00
14.9x28, 6 Ply	\$185.00
16.9x28, 6 Ply	\$225.00
16.9x28, 8 Ply	\$245.00
16.9x30, 6 Ply	\$240.00
18.4x28, 6 Ply	\$300.00
18.4x30, 6 Ply	\$270.00
23.1x30, 8 Ply	\$650.00
24.5x32, 10 Ply	\$775.00
16.9x34, 6 Ply	\$270.00
18.4x34, 6 Ply	\$310.00
18.4x34, 8 Ply	\$335.00
20.8x34, 6 Ply	\$470.00
20.8x34, 8 Ply	\$510.00
23.1x28, 10 Ply	\$600.00
23.1x34, 8 Ply	\$689.00
11.2x38, 4 Ply	\$147.00
12.4x38, 4 Ply	\$175.00
13.6x38, 4 Ply	\$185.00
13.6x38, 6 Ply	\$205.00
14.9x38, 6 Ply	\$224.00
15.5x38, 6 Ply	\$235.00
15.5x38, 8 Ply	\$260.00
16.9x38, 6 Ply	\$295.00
16.9x38, 8 Ply	\$325.00
18.4x38, 6 Ply	\$340.00
18.4x38, 8 Ply	\$380.00
20.8x38, 8 Ply	\$520.00

Service Available.... Call For Quote!

ARMSTRONG

Loader-Dozer



★ TUBELESS ★

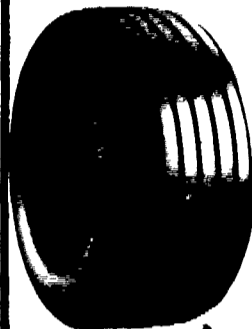
16.9x24, 8 Ply	\$265.00
16.9x24, 10 Ply	\$330.00
17.5Lx24, 6 Ply	\$245.00
17.5x24, 8 Ply	\$270.00
15.5x25, 12 Ply	\$310.00
17.5 x25, 12 Ply	\$440.00
19.5Lx24, 10 Ply	\$380.00
19.5Lx24, 12 Ply	\$430.00
12Lx24, 12 Ply	\$500.00
20.5x25, 12 Ply	\$643.00
23.5x25, 12 Ply	\$860.00
23.5x25, 16 Ply	\$1,000.00

ARMSTRONG

★ TUBE TYPE ★

14.9x24, 6 Ply	\$200.00
14.9x24, 8 Ply	\$220.00
16.9x24, 6 Ply	\$220.00
16.9x24, 8 Ply	\$235.00
16.9x24, 10 Ply	\$280.00
17.5Lx24, 8 Ply	\$240.00
16.9x28, 8 Ply	\$280.00
18.4x28, 10 Ply	\$340.00
20.5x25, 12 Ply	Call For Quote
1300x24, 10 Ply	\$225.00
1300x24, 12 Ply	\$245.00
1400x24, 10 Ply	\$255.00
1400x24, 12 Ply	\$280.00

WAGON TIRES



Special Discount \$5.00 OFF These Prices

• WAGON TIRES SHIPPED UPS - NO CHARGE! •

26 1200x12, 4 Ply	\$48.00
8.5x14, 6 Ply	\$41.00
9.5Lx14, 6 Ply	\$44.00
9.5Lx14, 8 Ply	\$48.50
9.5Lx15, 6 Ply	\$42.00
9.5Lx15, 8 Ply	\$44.00
11Lx14, 6 Ply	\$49.00
11Lx15, 6 Ply	\$43.00
11Lx15, 8 Ply	\$47.00
11Lx15, 10 Ply	\$60.00
1000x15, 8 Ply	\$60.00
11Lx15, 3 Ply Tubeless	\$50.00
11Lx16, 8 Ply	\$58.00
11Lx16, 10 Ply Tubeless	\$74.00
12.5Lx15, 10 Ply	\$75.00
12.5Lx16, 14 Ply	\$86.00
12.5Lx16, 12 Ply	\$87.00
14Lx16.1, 12 Ply	\$140.00
16.5Lx16.1, 10 Ply Tubeless	\$160.00
25x7.50x15, 4 Ply Tubeless	\$44.00
25x7.50x15, 6 Ply Tubeless	\$48.00
27x9.50x15, 4 Ply Tubeless	\$53.00
27x9.50x15, 6 Ply Tubeless	\$60.00
27x9.50x15, 8 Ply Tubeless	\$65.00
31x13.50x15, 6 Ply Tubeless	\$88.00
31x13.50x15, 8 Ply Tubeless	\$99.00

FRONT TRACTOR Shipped UPS - No Charge!

★ 3-RIB ★

400-12	\$22.00
400-15	\$24.00
400-19, 4 Ply	\$28.00
500-15	\$31.00
550-16, 4 Ply	\$33.00
550-16, 6 Ply	\$36.00
600-14, 6 Ply	\$52.00
600-16, 4 Ply	\$37.00
600-16, 6 Ply	\$41.00
650-16, 6 Ply	\$42.00
75L-15, 8 Ply	\$50.00
750-16, 8 Ply	\$54.00
750-15, 6 Ply	\$50.00
750-18, 6 Ply	\$64.00
750-20, 6 Ply	\$77.00
9.5L-15, 6 Ply	\$55.00
9.5L-15, 8 Ply	\$60.00
10.00-16, 6 Ply	\$80.00
11Lx15, 8 Ply	\$75.00
1100-16, 8 Ply	\$110.00
14L-16.1, 8 Ply	\$160.00

★ 4-RIB ★

11L-15, 8 Ply	\$80.00
10.00-16, 6 Ply	\$80.00
10.00-16 (TL), 6 Ply	\$95.00
10.00-16 (TL), 8 Ply	\$108.00
11.00-16, 6 Ply	\$108.00
11.00-16 (TL), 6 Ply	\$110.00
11.00-16, 8 Ply	\$108.00
11.00-16 (TL), 8 Ply	\$123.00
14L-16.1 (TL), 6 Ply	\$180.00
14L-16.1, 8 Ply	\$164.00
16.5L-16.1 (TL), 8 Ply	\$250.00

★ 5-RIB ★

1100x16, 12 Ply, Tubetype	\$135.00
1100x16, 12 Ply, Tubeless	\$150.00

Small Rear Farm Tires

750x20, 4 Ply	\$59.95
750x24, 4 Ply	\$64.95
8.3x24, 4 Ply	\$92.00
9.5x24, 4 Ply	\$92.00
11.2x34, 4 Ply	\$142.00
11.2x36, 4 Ply	\$144.00
12.4x24, 4 Ply	\$123.00
12.4x36, 4 Ply	\$190.00
13.9x36, 6 Ply	\$200.00

CONTRACTOR F-3

11Lx15, 8 Ply	\$80.00
11Lx16, 8 Ply	\$82.00
11Lx16, 10 Ply	\$86.00
750 800x16, 10 Ply	\$80.00
11Lx16, 12 Ply	\$130.00
145 - 75 - 16.1, 10 Ply	\$225.00

3 WHEELER TIRES

20x7.00-8	\$35.00
21x7.00-8	\$33.50
22x11.00-8	\$38.01
22x8.00-10	\$40.75
22x11.00-10	\$45.95
25x12-9	\$54.71
18x950-8	\$30.65

ARMSTRONG

USED GRASS TIRES IN STOCK!

8.3x24	\$100.00
9.5x24	\$112.00
14.9x24, 6 Ply	\$200.00
16.9x24, 6 Ply	\$210.00
18.4x16.1, 6 Ply	\$245.00
18.4x26, 6 Ply	\$360.00
13.6x28, 6 Ply	\$225.00

SKID LOADER TIRES

570x12, 4 Ply	\$40.00
23.850x12, 4 Ply	\$47.00
27.850x15, 4 Ply	\$51.00
27.850x15, 6 Ply	\$65.00
27.1050x15, 6 Ply	\$70.00
700x15, 6 Ply	\$85.00
750x15, 6 Ply	\$88.00
10-16.5, 6 Ply	\$80.00
12-16.5, 8 Ply	\$120.00

Steel Shield 10-16.5, 6 Ply.....\$95.00

Above Tires Shipped To You FREE

Central Warehouse
 Mt Joy, Pa
 717-653-1260

Serving Farmers In
 Penna., New Jersey, Northern
 Maryland and Delaware

Branch Warehouse
 Northumberland, Pa
 717-473-3974

MUMMAU TIRE

For Service And Out-of-State, Call: 717-653-1260
 In Pa., Call Toll Free: 1-800-222-1729