

Virginia Weekly Livestock

Richmond, VA

Thurs., October 29, 1987

FEEDER STEERS AND HEIFERS IN VIRGINIA AUCTIONS SOLD STEADY TO \$6.00 LOWER WHILE MIDWEST PRICES WERE STEADY TO \$1.00 LOWER.

SLAUGHTER STEERS AND HEIFERS WERE STEADY AT VIRGINIA AUCTIONS WHILE MIDWEST MARKETS WERE STEADY TO \$1.00 LOWER. BOXED BEEF PRICES WERE \$.83 CENT LOWER LAST WEEK AS THE BOXED BEEF CUT-OUT VALUE REACHED \$103.85/CWT. MONDAY.

COWS AND BULLS IN VIRGINIA AUCTIONS WERE MOSTLY STEADY TO \$3.00 LOWER WHILE MIDWEST PRICES WERE STEADY TO \$1.00

LOWER. BEEF PRODUCTIONS LAST WEEK WAS 4% BELOW THE PREVIOUS WEEK AND .3% BELOW A YEAR AGO. AVERAGE WEIGHTS WERE 7 LBS. HEAVIER THAN LAST YEAR.

VEAL AND CALF PRICES IN VIRGINIA AUCTIONS WERE STEADY LAST WEEK, FOLLOWING MIDWEST PRICES WHICH WERE STEADY TO AS MUCH AS \$8.00 LOWER. SLAUGHTER WAS 2% ABOVE A WEEK AGO AND 11% BELOW A YEAR AGO AS AVERAGE WEIGHTS WERE THE SAME AS A YEAR AGO.

LAMB PRICES AT VIRGINIA AUCTIONS WERE STEADY TO \$2.25 HIGHER AS MIDWEST PRICES WERE STEADY TO \$6.00 HIGHER. SLAUGHTER LAST WEEK WAS 4% ABOVE

THE PREVIOUS WEEK AND 8% BELOW A YEAR AGO. AVERAGE WEIGHTS WERE 1 LB. HEAVIER THAN LAST YEAR.

HOG PRICES IN VIRGINIA AUCTIONS WERE \$3.00 TO \$4.00 LOWER THIS WEEK. PORK PRICES WERE STEADY TO \$2.00 HIGHER DURING THE WEEK. PORK PRODUCTION LAST WEEK WAS 2% BELOW THE PREVIOUS WEEK AND 8% ABOVE A YEAR AGO AVERAGE WEIGHTS WERE 1 LB. HEAVIER THAN LAST YEAR.

RICHMOND HOG MARKET CLOSED \$3.00 LOWER THAN LAST WEDNESDAY WITH BARROWS AND GILTS US 1-4 200-240 LBS \$42.00-42.50 PER CWT. TOTAL RECEIPTS FOR THE

WEEK 200 HEAD.

SOUTHEAST VIRGINIA HOG MARKET CLOSED \$3.00 LOWER THAN LAST WEDNESDAY WITH BARROWS AND GILTS US 1-4 200-240 LBS \$42.50-43.50 PER CWT. TOTAL RECEIPTS FOR THE WEEK 18,127 HEAD.

AT HARRISONBURG, LYNCHBURG AND TAPPAHANNOCK HOG PRICES WERE \$3.00-3.50 LOWER THAN LAST WEDNESDAY AT \$41.00-47.00. SOWS RANGED \$30.00-34.00 AND BOARS \$28.00 PER CWT.

SLAUGHTER STEERS & HEIFERS 1%; SLAUGHTER COWS 18%; SLAUGHTER BULLS 1%; SLAUGHTER CALVES AND VEALERS 1%; FEEDER CATTLE UNDER 600 LBS 66%, OVER 600 LBS 13%.

PRICE RANGES FOR VIRGINIA AUCTIONS.

SLAUGHTER CATTLE CHOICE STEERS 2-3 1000-1150 LBS 63.50 CHOICE STEERS 2-3 1150-1300 LBS 64.00-64.50 CHOICE STEERS 2-3 1300 LBS & OVER 64.00-66.50.

CHOICE HEIFERS NO PRICES REPORTED THIS WEEK

UTILITY & COMMERCIAL COWS 38.00-48.50 BULLS - 1-2 900-1300 LBS 43.25-55.00 1-2 1300-1600 LBS 45.00-57.50 1-2 1600 LBS & OVER 47.00-59.00.

SLAUGHTER CALVES AND VEALERS VEALERS - HIGH CHOICE AND PRIME 100-250 LBS 70.00-85.00 GOOD AND CHOICE 100-250 LBS 69.00-82.00 CALVES - GOOD AND CHOICE 250-500 LBS 62.00-76.00 SLAUGHTER LAMBS HIGH CHOICE AND PRIME 95-125 LBS 65.00-68.80, BUCKS 63.00 SLAUGHTER HOGS US 2-4 200-250 LBS 43.50-46.35 SOWS US 1-3 300-500 LBS 34.25-46.00, 500 LBS & OVER 35.00-48.00 FEEDER CATTLE STEERS, MEDIUM 1 300-500 LBS 74.00-88.00 500-700 LBS 70.00-86.00 FEW 65.00 HEIFERS, MEDIUM 1 300-500 LBS 70.00-82.00 FEW 60.00 500-700 LBS 60.00-70.00

Shenandoah Valley Livestock

Harrisonburg, Va.

Saturday, Oct. 24, 1987

Report supplied by auction

FEEDER CATTLE TREND \$2-5

LOWER

STEERS M&L-1 300-500 LBS 80.00-87.00, 500-700 LBS 71.00-80.00; 700-1000 LBS 66.00-74.00, S-L&M&L-2 300-500 LBS 74.00-78.00, 500-700 LBS 63.00-75.00; 700-1000 LBS. 63.00, HOLSTEIN 300-1000 LBS. 56.00-63.00 FEEDER BULLS. M&L-1 300-500 LBS 74.00-81.00, 500-700 LBS 67.00, S-L&M&L-2 300-500 LBS 71.00.

HEIFERS M&L-1 300-500 LBS 65.00-71.00; 500-700 LBS. 58.00-67.00; 700-1000 LBS 60.00-61.00 S-L&M&L-2 300-500 LBS. 62.00-65.00; 500-700 LBS 59.00.

STOCK COWS: BEEF: 390.00-495.00; BABY CALVES: 35.00-120.00, MOSTLY 50.00-100.00

SLAUGHTER COWS TREND. \$2-3 LOWER. UTILITY & COMMERCIAL 2-4 37.00-43.00, CANNER & CUTTERS 1-3 32.00-39.00.

SLAUGHTER BULLS 1&2 48.00-54.00.

LAMBS TREND. 1/4 LOWER. BLUE O HIGH CHOICE & PRIME 65.50, RED O CHOICE 67.50, FEEDER LAMBS CHOICE 78.00-81.00, SLAUGHTER EWES 26.00-31.00

HOGS. SOWS 1-3 36.00-41.00 VEALS. GOOD 79.00.

New Holland Horses

New Holland Sales Stables

New Holland, PA

Monday, Oct. 26, 1987

Report supplied by Auction REGISTERED RECEIPTS OF 390 HEAD OF HORSES, MULES AND PONIES MARKET STEADY

LOCAL DRIVING HORSES 375.00-850.00 RIDING HORSES 175.00-500.00 BETTER RIDING HORSES 625.00-875.00 LIGHTWEIGHT KILLERS 140.00-275.00 HEAVYWEIGHT KILLERS 325.00-455.00 MARE PONIES 30.00-70.00 COLTS 10.00-20.00 GELDING PONIES 30.00-70.00 LARGER PONIES 110.00-140.00

THEY DON'T CALL US FOR NOTHING...

Most calls at U S Agri-Systems concern problems - problems with manure management systems. They call because U S Agri-Systems is known in the business as the best trouble-shooter in the business.

U S Agri-Systems is backed

by experience and the best manure handling equipment available. This combination provides you a solution to your problem, without spinning wheels. Call U S Agri-Systems for solutions - Toll Free

1-800-222-2948.

CRIPPLED AND DISABLED

Cows, Steers & Bulls For Slaughter Under USDA Inspection

Call Wayne Taylor

717-866-6289
215-286-9400

Lebanon, Berks, Lancaster & Chester Counties



ATTENTION FARMERS

EVERY MONDAY HATFIELD PACKING CO. and MOYER PACKING CO.

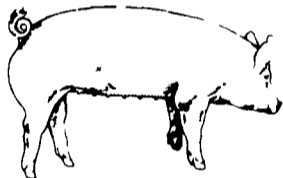
Will Receive Your Hogs and Cattle at the DANVILLE LIVESTOCK MARKET

RD 4, Danville, PA

- We will receive your hogs from 8 AM to 12 Noon every Monday Your hogs will be weighed and paid for immediately
- We will also accept your sows & boars
- Your cattle will be received from 12:30 to 5 P.M. We will either pay you for your cattle immediately or you may sell them dressed weight
- There will not be a commission or yardage fee deducted from your check
- You may call our office Monday morning and we will be able to tell you the base price for hogs for the day

MELVIN M. LEHMAN - Owner
Danville Buying Station

Phone: 717-275-2880



EMERY'S BUYING STATION

OPEN TO RECEIVE YOUR MARKET HOGS

AT THE GREEN DRAGON MARKET RD 4, EPHRATA, PA 17522 1 MILE NORTH OF EPHRATA ON NORTH STATE STREET.

HOURS: MONDAY, TUESDAY, and WEDNESDAY 7:00 A.M. to 11:30 A.M.

215-458-5677 Residence
717-733-9648 Office

215-458-5677 Residence
717-733-9648 Office

YOU ARE PAID FOR YOUR HOGS IMMEDIATELY

Ken & Lois Emery, Proprietors

HAY & STRAW SALE

12:00 Noon Every Wednesday Westend of Avondale at the intersection of Baltimore Pike and Route 41.

Harvey Z. Martin
215-268-3604 (Office)
215-445-5303 (Residence)

KING'S AUCTION KIRKWOOD

Hay, Straw and Grain Auction EVERY TUESDAY

12:00 Located Rt. 472 5 miles south of Quarryville or 6 miles north of Oxford corner of Rt. 472 and Noble Road at Rouse Tobacco Station.

Lloyd H. Kreider, Auctioneer AU-000513L

No out of state checks ALL TRUCKERS AND FARMERS WELCOME

WORKERS FOR FERTILIZER PLANT WANTED

Shipping, receiving, production & mechanical. Agricultural background helpful, but not required.

Apply R/K Agri Service
500 Running Pump Rd.
Lancaster, PA

SHOW and SALE of BERKSHIRES - LANDRACE - POLAND CHINAS



November 6 & 7, 1987

ROCKINGHAM COUNTY FAIRGROUNDS, HARRISONBURG, VIRGINIA

SALE DAY PHONE: 703/434-1002

FRIDAY, NOVEMBER 6

1:00 p.m. - Show Begins
Poland Chinas - Landrace - Berkshires
6:00 p.m. - Championship Drive

SATURDAY, NOVEMBER 7

10:00 a.m. - Sale Begins
Boars, Bred Gilts, Open Gilts, on rotating basis.

SWINE PRODUCTION SALES AND SERVICE

Feeding Programs And Services To Meet Your Individual Needs

Computerized Record Keeping System



Supplying Farm Fresh Feeder Pigs

Marketing and Hedging Services

Marketing of Genesis Breeding Stock

Grain Purchasing And Exchange

Developing Individual Financial Programs

Quality Products And Services - Working For YOU

419 West High Street
Elizabethtown, PA 17022

Elizabethtown
(717) 367-1525

PA Toll Free
1-800-468-5524

Shippensburg
(717) 532-7845

HAY, STRAW & GRAIN SALE!

Every Thursday, 12 Noon

As Many As 30 Buyers - Need More Loads Of Hay, Straw And Corn!

Lunch Served
Everett Kreider
Auctioneer #007

ROTH SALES
Rt 472, Kirkwood, PA
717-529-6249