

Lebanon County Holstein Banquet Held

SCHAEFFERSTOWN — More than 150 members of the Lebanon County Holstein Club gathered at the fire hall here Thursday evening for their annual banquet.

Dr. Larry Specht, dairy science extension specialist from Penn State, was the meeting's featured speaker. He discussed the history of the dairy industry in America with a special emphasis on Holsteins.

Attend Homemakers Holiday Meeting

KENNETT SQUARE — The Chester County Cooperative Extension Service will hold their Homemakers Holiday Meeting on Wednesday, November 11, 1987 at the Masonic Hall, Center & Cypress Streets, Kennett Square from 9:30 A.M. until 2:15 P.M.

The program will feature Dr. Nancy Churchman Sawin, illustra-

Awards were given to the Junior Holstein Club members who placed first, second, and third in the club's milk and fat contest.

Rebecca Sonnen, the State Dairy Princess, who is from Lebanon County, attended the banquet as did Angie Bollinger, the Lebanon County Dairy Princess. Rebecca entertained attendees with her account of the state dairy princess competition.

tor, author, educator, and entertainment by a local vocal group. The Make and Take will be a Victorian ornament filled with potpourri. A registration fee will include lunch.

Pre-registration is necessary by Friday, Nov. 6. For information contact the Extension Office at 696-3500.



The Junior Holstein Club members received awards for placing in the club's milk and food contest. Left to right, front row: Christopher Wagner, Steve Bollinger. Middle row: Kristen Hoffer, Stephanie Wagner, Kendra Mase, Angie Bollinger, Kathy Mase. Back row: Adam Sonnen, Duane Nolt, Jonathan Sonnen, David Lentz, and Jacob Sonnen.

Public Auction Register

Closing Date Monday 5:00 P.M. of each week's publication

OCTOBER

WED. NOV. 4 - 11AM Modern Farm Machinery, 2 Trucks, Standing Corn, 2000 Bales Hay, 63 Holstein Dairy Cattle Keiss Farm, 3 mis W of Warrensville, PA, 3 mis E. of Balls Mills, just off Rt. 973. 6 mis NE of Williamsport. Lycoming Co. Mike Fish, Owner Fraley Auct. Co.

THURS NOV 5 - 1PM Farm Eq 2 mis E of Muncy along Kepner Hill Rd. Fraley Auct Co

FRI NOV 6 - 7PM Cumberland Valley Dairy Sale of

100 plus Reg & High Grade Holsteins. At former Chambersburg Livestock, I-81, Exit 5. J. Rodger Wildeson, Auct

SAT NOV 7 - 10AM Ice Plant Industrial & Farm Eq. At Hollyford Ice Co., King Street, Mt. Holly, NJ. Richard Allen, Auct

SAT NOV 7 - 11AM Nittany Lion Fall Classic of 65 Deep-Pedigreed Registered Holsteins. At PSU Ag Arena, University Park, PA. Co-Sponsored by Penn State Dairy Science Club, PA Holstein Assn

Lebanon County Shows Champion

Shelby Heagy from Lebanon showed a heavyweight barrow in the junior competition at the Keystone International Livestock Exposition that was named grand champion. It was also chosen as reserve grand champion open barrow on foot.



PUBLIC AUCTION Ice Plant Industrial & Farm Equipment SATURDAY, NOVEMBER 7th, 1987 10:00 A.M.

Inspection 9 A.M.
At Hollyford Ice Co., King Street, Mt. Holly, New Jersey.

Complete contents of ice plant, including ice tank with 440 can 300 lb. blocks, 10 can hydraulic dump, 10 can filler system, 3 ton overhead crane, ammonia condensers and pump, cooling tower, Vogt cube machine, ice crusher and sizer, block size elevator, Perfection scoring machine, Perfection ice bagger, Ford truck with 16' refrigerated body, 1966 White truck with regular body, contents of locker plant.

INDUSTRIAL EQUIPMENT

1984 GMC Brigadier 10 wheel dump truck, 60,000 miles; 15 fork lift trucks, gas & propane; battery chargers, 6 and 36 volt; 6 cyl. Gray Marine engine; 15 overhead hoists, electric and hand; 100 ton press; Homelite generator; Homelite pump.

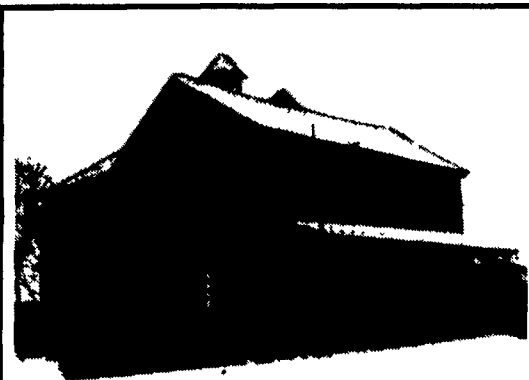
FARM EQUIPMENT

New MF grain and fertilizer drill 17x7" double disc; new FM Model 151 tiller, 12 1/2' wide with Danish S tires; coulters and rolling baskets; new MF 820 disc harrow, bat wing 27' wide, 22" disc, fully hydraulic; Kubota Model L210 3 pt. hitch PTO dsl.; 1 International Model 504 Ag tractor; 1 International Model 460 utility tractor; JD Model 2030, 6 cyl. dsl. rebuilt; Kubota Model B5100E with mid mount mower; Oliver 70 tractor; MF 85 tractor, power adjust wheels, 3 pt. hitch PTO, White Model 2442 tractor loader, 3 pt. hitch PTO; new MF240 Ag tractor, 3 pt. PTO, 34 hp.

FOR COMPLETE LISTING CONTACT AUCTIONEER

Terms: Cash and certified check.

Auctioneer: Richard Allen
Pa. license #AU002268L
609-267-8382



Short Notice PUBLIC SALE

SATURDAY, NOVEMBER 7, 1987
Time: 10:00 A.M. Sharp

Located in the village of Andersonburg, Perry Co., 3 miles East of Blain on Rt. 274.

ANTIQUES & COLLECTIBLES Partial Listing

2 sets of 4 plank bottom chairs, 2 pc., 2 drawer red & white step-back cupboard with dovetailed case (blond doors, top & bottom), Early blanket chest dated on hinges 1786, Blue decorated jugs and other Misc. crocks, Cookstoves (Dockash & Home Comfort), primitive sled, cast iron stoves, many old store items, many nice pieces too numerous to mention.

Selling at 1:00 P.M.
REAL ESTATE

Consists of 3-story frame dwelling, 7 large rooms, kitchen & full bath, drilled well, septic and garage. Home and business property. Inspection of property - day of sale. Seller reserves the right to reject any or all bids.

AUTOMOBILE

1954 Chevrolet Sedan, automatic, 49,000 original miles. Very nice condition. Guns, Silver dollars & other Misc. coins. Mills Bros. 5¢ Slot Machine.

OWNER:

T.B. BEDNARCZYK

JO DREWETT - AUCTIONEER

Lic. No. AU002140-L

STEVEN P. NEGLEY - APPRENTICE

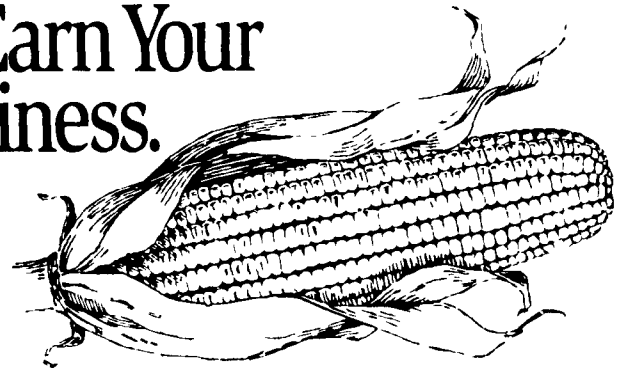
For Information Call (717) 536-3382

TERMS: CASH ONLY

LUNCH STAND

NOT RESPONSIBLE FOR ACCIDENTS!

I've Got The Numbers To Earn Your Business.



Cooperator: Lapp Bros. Farms
Cochranville, Pa.

Planted: May 11, 1987

Harvested: October 26, 1987

Hybrid	Day Maturity	Moisture	Yield @ 15%
DK 636	113	19.4	182.5
DK 524	95	18.0	161.5
DK 636	113	19.1	200.9
DK 572	107	19.2	181.5
DK 636	113	18.8	184.7
DK 672	117	20.5	186.5
DK 636	113	19.1	190.9
DK 656	115	19.5	185.7
DK 636	113	19.8	180.2
DK 689	118	24.4	154.7

With performance numbers like these, it's easy to see how DEKALB-PFIZER products are earning their way on more crop acres. Ask me about the hybrids and varieties that can earn your seed business.

Earning Our Way On More of Your Acres.

See Your Local DEKALB-PFIZER
Genetics Dealer
For More Information



**DEKALB-PFIZER
GENETICS**

DEKALB is a registered trademark. Numbers designate varieties. As a condition of sale, please note that our corn is limited to winter and summer crops. DEKALB-PFIZER Corn Genetics is not responsible for accidents.