

Public Auction Register

Closing Date Monday 5:00 P.M.
of each week's publication

SAT NOV 7 - 2PM Real Estate, Antiques, HH, Coins 340 Clay School Rd., Clay Twp., Lanc Co., PA Rt 322 W of Ephrata, turn right onto Snyder Lane to Clay School Rd. Terms by Harry G Brubaker Sr Estate, T. Glenne & Timothy G Horst, Aucts

Sale at the Mar Lee Angus Farm in the Broadway Sale Barn, Woodsboro, MD 301-898-7272

MON NOV 9 - 10:30AM Plumbing & Electrical Equipment, Tools, Supplies Estate of Clarence Foster, 1/2 mi N of Cecilton, MD, on Rt 213 Harry Rudnick & Sons Inc

SAT NOV 7 - 2PM Maryland Reg Angus Club Calf

MON NOV 9 - 2PM 72 Acre Limestone Farm in

West Earl Twp Between Farmersville and Browns-town Phares W & Anna Mae Hurst Paul E Martin & John D Stauffer, Aucts

MON NOV 9 - 4:30PM Fine Antiques, HH Bricker-

ville Fire Hall, 10 Hopeland Rd., 8 mis W of Ephrata, just off Rt 322, Brickerville,

Lanc Co., PA Terms by Ruth J Frantz T Glenn & Timothy G Horst, Aucts

PUBLIC SALE

Monday, November 2, 1987

REAL ESTATE

Located in Leacock Township, Lancaster Co., PA. 2 miles northwest of Intercourse along Newport Rd., Rt. 772. Two and a half story house, 4 bedrooms on second floor. On first floor, large kitchen, 1 bedroom, living room, laundry, full bath, closed in porch.

Two story barn, with horse stable, forebay, work shop area.

New well, septic tank sewage system. 10% down sale day. Final settlement 60 days.

Owners:

CHRIST Z. & FANNIE KING



Auctioneers: Steve Petersheim
Steve, Jr.
AU 001349L

For Information call: 215-593-2828
Attorney: Wentz, Weaver, Kiling

FARM EQUIPMENT and Lawn & Garden AUCTION

Thurs., Nov. 19
11 AM

Everett Kreider,
Auctioneer #007

ROTH SALES

Rt 472, Kirkwood, Pa.
717-529-6249
Next Farm Sale
Feb 25, 1988

WILLIAM G. MUSSER ABSOLUTE AUCTION VALUABLE 30-ACRE FARM PERSONAL PROPERTY, ANTIQUES FARM MACHINERY, TOOLS Sat., Nov. 7, 1987

At 9 A.M. Sharp!

Location on premises: From Rt. 625 thru Bowmansville turn east onto Maple Grove Rd. Go approx. 1/4 mi. across turnpike bridge to first lane left, Lancaster County. Watch for auction signs.

REAL ESTATE - 2 P.M.

30 acres, more or less, w/approx. 18 ac. tillable. Balance pasture and woodland. Sandstone and log 2 1/2 story 4-bedroom dwelling w/18" window sills w/eat-in kitchen, attached summer kitchen, living and family rm. and full bath. Attic and basement storage. Spring-fed water supply. Oil hot water heat.

Note: This farm has not been available for 50 yrs. Location ideal for easy access to Reading or Lancaster via Rt. 625 or Rt. 222 or Phila. via turnpike! For terms, details and farmland plot plan call auctioneers at 215-445-4309 or 717-733-1006. Open house - Sats, Oct. 24 and 31 from 2-5 P.M. or by appointment.

FARM WILL BE SOLD REGARDLESS OF PRICE!!

PERSONAL PROPERTY - ANTIQUES

Oak Pedestal Table; Cherry Drop Leaf Table; Oak Sideboard w/Mirror; 6 Plank Bottom Keyhole Chairs; Ext. Table w/Boards; 3-pc. Maple Bedrm. Suite; 4-pc. Waterfall Bedrm. Suite; 2-Lid Dovetail Woodbox; Oak Chest of Drawers; Cedar Chest; Walworth Piano; Carnival Water Pitcher; Assorted Dishes; Old Doll Crib; F.H. Cowden Harrisburg Jug; Old Crystal Radio; Piano Claw Foot Stool; Blanket Chest; Wardrobes; Old Highchair; Leather Sewing Machine; Maytag Wringer Washer; Old Mantel Clock; Picture Frames; Crocks; 410 ga. H & R Single Shotgun; Grain Cradle; some Bee Equipment; Morris & Ireland Boston Safe; Block Plane; Slaw Cutter; Broadaxe; Straw Knife; Enterprise Saus. Stuffer; Sm. Cider Press; Old Flail; Old Light Fixtures; Washstand; Lg. Iron Kettle; Cigar Mold; Pump Jack; Pump Trough; 60 lb. Box; 2 Recliner Chairs; Treadle Sewing Machine; Eureka Vacuum Cleaner; Zenith AM-FM Radio; Burpee Pressure Cooker; Hotpoint Elect. Range; Hotpoint Upright Freezer; Philco Freezer; Jordan Freezer; Elect. Egg Grader; plus loads of other items!

FARM MACH. AND TOOLS

AC B Tractor; AC 2R Corn Planter; AC Gleaner Combine (not grader; running); N.H. Stationary Hammermill; Anvil; Vise; 2 T. Floor Jacks; Old Car Parts; 3 hp 2-Stage Air Compressor w/45 Gal. Tank; Old 6 Cy. Chevy Engine; Assort. Oils; Fan Belts; Brake Fluid, Etc.; Hand Tools; Ladder; Chain Hoist; Lathe.

Note: This is only a partial listing. 2 auctions may be conducted simultaneously much of the time. Something at this one for everyone!

Terms are cash or good check. No out of state checks.

Lunch stand.

Terms by:

WILLIAM G. MUSSER

Auction conducted by
Randal V. Kline, Lloyd Kreider,
Roy Good, Jr., Auctioneers, AU-2116L

215-445-4309



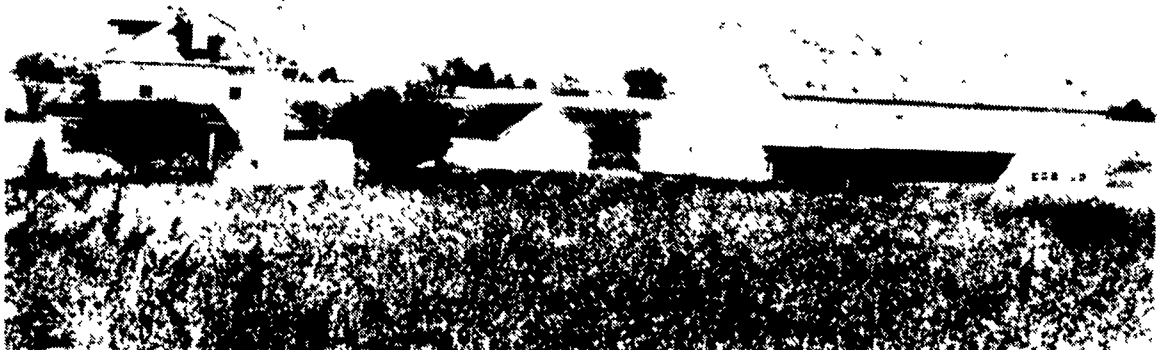
Kline & Kreider Auctioneers

PUBLIC AUCTION OF REAL ESTATE

(70.8 Acre General Farm)

Saturday, November 14, 1987

Promptly at 9:30 A.M.



LOCATION: Between Mount Joy and Marietta, East Donegal Township, Lancaster County, Pennsylvania. Situated on Long Lane, off Mount Joy Pike (Route 772)

FROM EAST: US Route 30 to PA Route 441 North at Columbia. Route 441 North to Ore Mine Road at Farmer's First Bank to Route 772 North. Turn right on 772 North to Long Lane. Right to Auction.

FROM WEST: PA Route 283 to Mount Joy Exit, Route 772 South, through Mount Joy, past Donegal High School to Long Lane. Turn left to Auction.

Real estate is a 70.8 acre limestone farm with approximately 57+ acres tillable. 13+ acres woodland. Farm fronts on Little Chickies Creek (approximately 2,000').

Farm includes a 2 story frame dwelling with three bedrooms with walk-in closets and full bath on second floor. Large, eat-in kitchen with extensive oak counter/cupboard space (kitchen includes a Whirlpool dishwasher and Magic Chef gas range/oven), living/family rooms, laundry (includes Maytag gas dryer), and attached summer kitchen all on first floor. Full concrete basement. Bradford White gas water heat. Some attic storage. Large wraparound roofed porch. Slate roof. Asbestos siding. Several entrances. Well water. Septic system.

Very Large Solid Frame and Stone Bank Barn, all concrete floor, entire barn scaffolded for several acres of tobacco, with dampening cellar and stripping room, machinery/hay storage, ear corn storage, several additions for machinery storage. Barn has asbestos and barn siding with slate roof.

Separate Frame Equipment Shed or Garage with dirt floor, tin roof, barn siding.

Other out buildings.

Farm is subject to a conservation easement limiting uses to agricultural and associated uses and no more than two dwellings in prescribed locations. For terms, details, call the Lancaster County Agricultural Preserve Board (717-299-8355).

Formerly the Warren and Esther Neff farm.

Open House: Thursday, Friday, and Saturday, November 5, 6, and 7, respectively, from 10:00 A.M. to 12:00 Noon.

REAL ESTATE IS ONLY AUCTION ITEM AND WILL BE SOLD PROMPTLY AT 9:30 A.M.
Coffee and donuts served.

Blakinger, Byler, Thomas and Chillas, P.C.

Edward Miller, Attorney

Roy C. Probst, AU000730LL

and Eric R. Probst, Auctioneers

464-3190 464-3700

Auction By:
Lancaster Co. Agricultural
Preserve Board/
County of Lancaster

