

National Grain Summary

Washington, D.C.

Wednesday, Oct. 21, 1987

MARKETS MOVED MOSTLY HIGHER WITH WHEAT RANGING 2 3/4 TO 14 CENTS PER BUSHEL HIGHER. YELLOW CORN TRADED 2 CENTS LOWER TO 4 CENTS PER BUSHEL HIGHER. SOYBEAN MARKETS MOVED UP 1/2 CENTS TO 5 1/4 CENTS PER BUSHEL HIGHER. USDA ANNOUNCED THAT RUSSIA BOUGHT 65,000 METRIC TONS OF U.S. YELLOW CORN FOR DELIVERY DURING THE 1987-88 MARKETING YEAR. ANOTHER 101,600 TONS SOLD TO UNKNOWN DESTINATION. ALGERIA BOUGHT 75,000 TONS OF U.S. HARD RED WINTER WHEAT FOR NOVEMBER-DECEMBER. SOUTH KOREA BOUGHT 50,000 TONS OF U.S. CORN FOR NOVEMBER-DECEMBER. RUSSIA BOUGHT 500,000 TONS OF U.S. SOYBEANS AND 500,000 TONS OF U.S. SOYBEANS MEAL FOR NOVEMBER-DECEMBER SHIPMENT.

DATE CHANGE YEAR AGO 10/20/87 10/19/87 10/21/87 WHEAT: KANSAS CITY 2.83-2.87 + 5 2.59-2.66 MINNEAPOLIS 3.18 3/4 + 2 3/4 3.06 1/2 PORTLAND 3.06-3.08 + 6 + 8 2.80-2.81 ST. LOUIS 2.83-2.91 + 5 + 14 2.95-3.01.

CORN, U.S. NO. 2 YELLOW: KANSAS CITY 1.66-1.72 UNCH - 2 1.50-1.56 MINNEAPOLIS 1.66 1/4 + 3 1.32 1/4 SO. IOWA 1.75-1.78 1/2 + 3 + 4 1.32-1.37 OMAHA 1.57-1.58 UNCH 1.41-1.43

SOYBEANS, NO. 1 YELLOW: KANSAS CITY 4.99-5.10 UNCH + 2 4.62-4.75 MINNEAPOLIS 5.10 1/4 + 5 1/4 4.72 3/4 SO. IOWA 5.18-5.21 + 4 + 5 4.67-4.75 C. ILL PROCESSORS 5 23 1/2-5.26 1/2 + 1/2 4.92-4.94.

*KANSAS CITY, U.S. NO 1 HARD RED WINTER WHEAT, ORDINARY PROTEIN MINNEAPOLIS, U.S. NO. 1 DARK NORTHERN SPRING WHEAT, 14% PROTEIN; PORTLAND NO. 2 SOFT WHITE WHEAT; AND ST.

LOUIS, NO. 2 SOFT RED WINTER WHEAT.

FUTURES CLOSE: KANSAS CITY (DEC) WHEAT 2.96 3/4 + 4 3/4 2.55 3/4 MINNEAPOLIS (DEC) WHEAT 2.84 3/4 + 2 3/4 2.70 1/2.

CHICAGO (DEC) WHEAT 3.02 1/4 + 5 1/2 2.90.

(DEC) CORN 1.83 1/4 - 1 1.73 1/4. (NOV) SOYBEANS 5.35 1/4 + 1/4 4.87 3/4.

EXPORT: BARGE OR RAIL, GULF DELIVERY NO. 1 HARD RED WINTER WHEAT ORDINARY PROTEIN 3 14 3/4-3.16 3/4 + 8 3/4 + 10 3/4 NO. 2 SOFT RED WINTER WHEAT 3.06-3.06 1/4 + 5 1/4 NO. 2 YELLOW CORN 2.02 1/4-2.04 UNCH + 1/4 NO. 2 YELLOW SORGHUM 3.30-3.43 UNCH - 4 NO. 2 YELLOW SOYBEANS 5 49-5 50 UNCH

King's Hay

Kirkwood, Pa.

Tuesday, Oct. 20, 1987

Report Supplied by Auction

10 LOADS ALFALFA 75 00-122.00; ALFALFA MIX 120 00, MIXED HAY 94 00-114 00; GRASS HAY, 90 00 WE NEED MORE STRAW BROUGHT TO OUR AUCTION.

Roth Hay and Straw

Kirkwood, PA

Thurs., Oct. 22

Report Supplied by Auction

4 LOADS EAR CORN, 61 00, ALFALFA, 87.00-129 00

Dewart Hay

Dewart, PA.

Monday, Oct. 19, 1987

Report Supplied by Auction

5 LOADS HAY, 45.00-92.00; 2 LOADS STRAW, 71.00-77.00; 4 LOADS WOOD, 45.00-90.00 LD.; CORN, 3 AT 55 00-59.00.

Westminster Hay

Westminster, Md.

Tuesday, Oct. 20, 1987

Report Supplied by Auction

14 LOADS. ALFALFA, VERY GOOD, 121 00, FAIR, 55 00; ALFALFA AND GRASS, 74.00-78.00, 1.40-2 05 BALE; ALFALFA TIMOTHY, FAIR, 43 00; TIMOTHY, 1 40 BALE; MIXED HAY, 1.20 BALE STUBBLE HAY .50 BALE, BARLEY STRAW (DARK) .50 BALE; WHEAT STRAW, 1.15 BALE WOOD, 20 00-45 00 CORD.

Keister's Hay

Middleburg, PA

Tuesday, Oct. 20

Report supplied by auction

15 LOADS HAY. MIXED HAY, 60.00-112.50, 2 LOADS STRAW, 62 50-80 00, 8 LOADS EAR CORN, 60 00-65 00, 2 LOADS RYE, 3 95 BU, 2 LOADS OATS, 1 55-1 65 BU

Leinbach's Hay

Shippensburg, PA

Oct. 17 & 20

Report supplied by Auction

31 LOADS. ALFALFA, 81.00-128.00; MIXED HAY, 61.00-116.00; TIMOTHY, 66.00-90.00, ORCHARD GRASS, 80.00-88.00; STRAW, 60.00-75.00. EAR CORN, 79.00-81.00; WHEAT, 2 50-3 30 BU.; RYE, 2.00-2.50 BU.; FIREWOOD, 35.00-40.00 PICK-UP LD

New Wilmington Hay

New Wilmington, PA.

Friday, Oct. 16, 1987

Report Supplied by Auction

HAY 22 LOTS. ALFALFA 67.50-101.00, MIXED HAY 48.00-100.00; TIMOTHY 3 AT 27.00, 60.00 & 69.00; CLOVER 1 AT 60.00. EAR CORN 7 LOTS 47.00-62.00 OATS 3 LOTS 1.85-2.15.

Buffalo Valley Produce Hay

Mifflinburg, Pa.

Thurs., Oct. 22, 1987

Report Supplied by Auction

2 Loads Mixed Hay, 58 00 and 66.00; Wood, 25 00 Ld.

Peoria Cattle

Peoria, Illinois

Thursday, Oct. 22, 1987

COMPARED WITH LAST WEEK'S CLOSE SLAUGHTER STEERS AND HEIFERS SOLD FIRM TO .50 HIGHER, INSTANCES 1.00 HIGHER. SLAUGHTER COWS GENERALLY STEADY TO WEAK. BULLS 1.00 TO 2.00 HIGHER. ALL REPORTED SALES MONDAY WITH NOT ENOUGH SALES MIDWEEK FOR A MARKET TEST. SUPPLY MAINLY GOOD TO AVERAGE CHOICE SLAUGHTER STEERS AND HEIFERS WITH 6% COWS. ESTIMATED RECEIPTS THIS WEEK ABOUT 2200 AS COMPARED WITH

ACTUAL RECEIPTS OF 1883 A WEEK AGO AND 1523 A YEAR AGO.

SLAUGHTER CLASSES: STEERS: CHOICE 2-4 1100-1300 LBS. 65.00-66.50 950-1100 LBS. 61.00-65.00 GOOD & CHOICE 2-3 1000-1200 LBS. 61.00-64.00.

HEIFERS: CHOICE 2-4 1000-1200 LBS. 64.00-65.50 850-1000 LBS. 60.00-64.00 GOOD & CHOICE 2-3 900-1100 LBS. 60.00-63.50.

COWS: BREAKING UTILITY 2-3 42.00-45.00 CUTTER AND BONING UTILITY 1-2 40.00-46.00 HIGH DRESSING 46 00-47.00 CANNER AND LOW CUTTER 40.00-42.00.

BULLS. FEW YG 1-2 1300-2000 LBS. 52 00-57.00.

St. Louis Cattle, Hogs

Wednesday, Oct. 21, 1987

FLASH MID-SESSION CLOSE CATTLE 200: (ALL SLTR) IN SUFFICIENT VOLUME SLAUGHTER STEERS AND HEIFERS TO ESTABLISH A MARKET. SLAUGHTER SUPPLY CONSISTS OF COWS. TRADING SLOW COWS WEAK TO 1.00 LOWER, DECLINE ON HIGH-YIELDING CUTTER AND BONING UTILITY.

SLAUGHTER CLASSES: COWS. CUTT, UTIL, COMM BULK SALES HI-DRESS % LO DRESS % BREAKING 2-4 41.00-44.00.

BONING 1-2 44.00-45.00 45.00-46.00.

CANNER & CUTTER 1-2 39.00-43.00.

SHELLY CANNER 1-2 35.00-39.00 DS

214 QUOTATION CHANGE: CD

43 00-46 00 CG 42.00-45.00.

ATTENTION FARMERS

The New Way To Market Your Livestock

HATFIELD PACKING CO. AND MOYER PACKING CO. Will Receive Hogs Will Receive Cattle

At The

BLAIR-BEDFORD BUYING STATION RD 1 Martinsburg, Pa

MONDAYS - Hogs 8 AM to 11:30 AM Cattle & Calves 8 AM to 3 PM

THURSDAYS - Cattle & Calves 8 AM to 3 PM

- No commission or yardage fees deducted from check
- Livestock weighed and paid for immediately
- You may call our office sale day for prices

DALE R. HOOVER - Owner

Business 814-793-3077 Residence 814-793-2657

HAY, STRAW & GRAIN SALE!

Every Thursday, 12 Noon

As Many As 30 Buyers - Need More Loads Of Hay, Straw And Corn!

Lunch Served

Everett Kreider Auctioneer #007

ROTH SALES Rt 472, Kirkwood, PA 717-529-6249

FRIDAY, NOV. 20 - 1:00 PM ON THE FARM MONTHLY BRED GILT SALE

Sale To Start Promptly Every 4 Weeks

Located 18 miles south of Lancaster, Pa., 6 miles south of Quarryville, take Rt. 272 to Little Britain, turn north, follow Little Britain Road to Jackson Road, right. 2nd farm, OR take Rt. 222, out of Quarryville to Cedar Hill Road to Little Britain Road to Jackson Road, left. Watch for sale arrows.

50 to 60 Head

WHITE DIAMOND GILTS Large White & Landrace, first generation true F-1 gilts. Parent stock originated from Lieske Bros. Minnesota. Very productive in litter size and feed conversion.

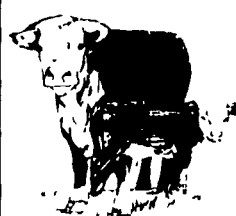
Vaccinated for Lepto, Erysipias, Rhinitis, E'Coll, Pasteueralla

Hand mated with Breeding Dates

Local Truck Available

No Hogs Sold On Commission

JOHN B. STOLTZFUS R.D. 1, Kirkwood, Pa. Abe Diffenbach, Auctioneer AU225L NEXT SALE FRI., DECEMBER 18, 1:00 P.M.



FEEDER CATTLE SALE

FRIDAY EVENING OCT. 30 - 7 P.M.

300 FEEDER CATTLE ALL BREEDS

90 Stock Cows Hereford & Crossbreds

30 cows selling with calves

60 bred back to pure-bred polled Hereford & Angus bulls.

Cows are tested for Interstate shipment.

FOUR STATES' Livestock Sales

Just off I-70 or 81 in Hagerstown, Md.

Phone 301-733-8120

LIVESTOCK HAULING

Dependable Service

6 Possum Bottom Tractors and Trailers Call Anytime

Vintage Sales Stables, Inc.

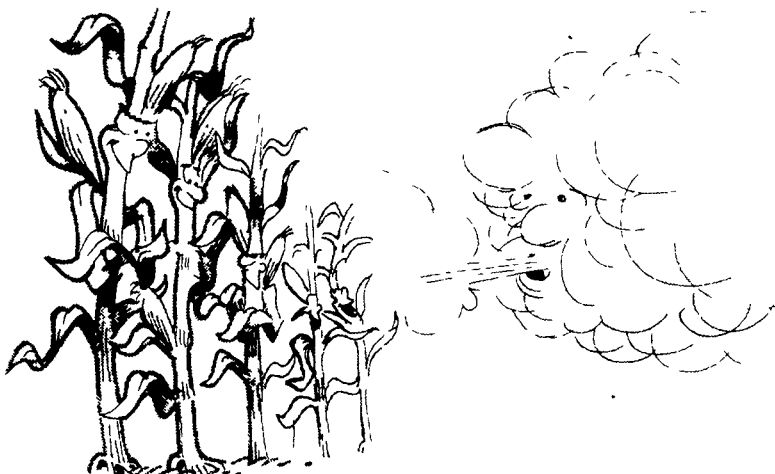
L. Robert Frame Manager

Office 717-442-4181 Office & Home: 215-458-5060 Office & Home: 215-458-8518

GRAIN & LIVESTOCK HEDGING SERVICES WITH

E.F. Hutton

Jim Rohrbaugh, Account Executive E.F. Hutton & Company Inc P.O. Box 3151, Harrisburg, PA 17105 (717) 763-1611 (800) 822-9553 In-state (800) 334-3119 Out-of-state



Corn That Stands Through The Fall

That corn crop you've labored over won't do you any good if the ears are lying on the ground at harvest time. But Funk's G-Hybrids will stand right through the harvest.

And they'll not only stand, they'll produce record breaking yields. With varieties like G-4027, tops in its field in New York. Or G-4446, a record yielder in Pennsylvania. Or G-4626, a stand-out in southern PA and Delmarva areas.

And each Funk's variety is backed by Hoffman research. We annually run

more than 50 test plots to ensure that only the best yielding varieties reach your fields.

When you're looking for outstanding yields this planting season, call your local Hoffman seed representative. Or call Hoffman Seeds direct. We'll deliver a corn crop that stands through the fall.



Hoffman Seeds, Inc.

The Yield Experts

Landisville, PA 17538

Call Toll Free 1-800-233-0137 In PA 1-800-732-0466