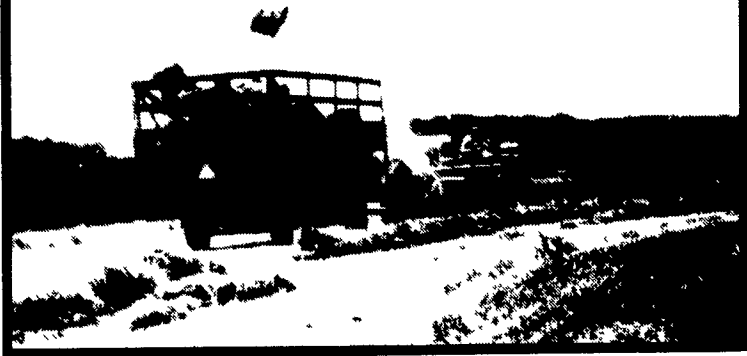


# HAY MARKETS



## Pa. Grain

Monday, Oct. 19, 1987

Report supplied by PDA  
 COMPARED WITH LAST TUESDAY'S MARKET FOR SOUTHEASTERN, CENTRAL AND SOUTH CENTRAL PA.: CORN STEADY TO .05 HIGHER; WHEAT UNEVENLY STEADY; BARLEY, OATS AND SOYBEANS STEADY TO .10 HIGHER; OLD EAR CORN MOSTLY STEADY

**SOUTHEASTERN PENNSYLVANIA**  
 CORN NO. 2-Y RANGE 1.80-2.12, AVERAGE 1.98; @WHEAT NO. 2 RANGE 2.85-3.15, FEW REPORTED 2.60, AVERAGE 2.90; \*CONTRACT FOR HARVEST 2.90-3.08, BARLEY NO. 3 RANGE 1.30-1.65, AVERAGE 1.46, \*CONTRACT FOR HARVEST 1.25; OATS NO. 2 RANGE 1.50-1.85, FEW REPORTED 2.05, AVERAGE 1.71; SOYBEANS NO. 1 RANGE 5.20-5.45, AVERAGE 5.28; \*GR SORGHUM #2 RANGE 1.75, AVERAGE 1.75; OLD EAR CORN RANGE 52.00-65.00, AVERAGE 56.18; \*\*NEW EAR CORN RANGE 37.00-44.00, AVERAGE 40.67.

**CENTRAL PENNSYLVANIA**  
 CORN NO. 2-Y RANGE 1.80-2.00, AVERAGE 1.89; @WHEAT NO. 2 RANGE 2.25-3.00, AVERAGE 2.64, BARLEY NO. 3 RANGE 1.25-1.40, AVERAGE 1.33; OATS NO. 2 RANGE 1.20-1.75, AVERAGE 1.48; SOYBEANS

NO. 1 RANGE 5.10-5.50, AVERAGE 5.24; \*+BUCKWHEAT RANGE 7.75-9.00, AVERAGE 8.38; OLD EAR CORN RANGE 50.00-55.00, AVERAGE 52.10

**SOUTH CENTRAL PENNSYLVANIA**  
 CORN NO. 2-Y RANGE 1.75-2.15, AVERAGE 1.98, @WHEAT NO. 2 2.25-2.85, AVERAGE 2.54, BARLEY NO. 3 RANGE 1.20-1.70, AVERAGE 1.43, OATS NO. 2 RANGE 1.20-1.95, MOSTLY 1.50-1.75, AVERAGE 1.57; OLD EAR CORN RANGE 55.00-65.00, AVERAGE 58.88; \*\*NEW EAR CORN RANGE 41.00-55.00, AVERAGE 47.67

**WESTERN PENNSYLVANIA**  
 CORN NO. 2-Y RANGE 1.50-2.00, AVERAGE 1.79, @WHEAT NO. 2 RANGE 2.30-2.70, AVERAGE 2.51; OATS NO. 2 RANGE 1.35-1.70, AVERAGE 1.51, \*+BUCKWHEAT RANGE 7.75-9.00, AVERAGE 8.25, OLD EAR CORN RANGE 45.00-53.00, AVERAGE 49.33, \*\*NEW EAR CORN FEW REPORTED 40.00, AVERAGE 40.00

**SOUTHEASTERN, CENTRAL & SOUTH CENTRAL SUMMARY**  
 CORN NO. 2-Y RANGE 1.80-2.12, AVERAGE 1.94, @WHEAT NO. 2-Y RANGE 2.30-3.11, AVERAGE 2.70, BARLEY NO. 3 RANGE 1.25-1.60, AVERAGE 1.41; OATS NO. 2 RANGE 1.25-1.85, AVERAGE 1.59; SOYBEANS NO. 1 RANGE 5.10-5.50, AVERAGE

5.26; OLD EAR CORN RANGE 50.00-65.00, AVERAGE 55.52; \*\*NEW EAR CORN RANGE 37.00-55.00, AVERAGE 43.47

### MONTH AGO

CORN NO. 2-Y RANGE 1.87, @WHEAT NO. 2-Y RANGE 2.59; BARLEY NO. 3 RANGE 1.35, OATS NO. 2 RANGE 1.42; SOYBEANS NO. 1 RANGE 5.32, OLD EAR CORN RANGE 54.61

### YEAR AGO

CORN NO. 2-Y AVERAGE 1.75, @WHEAT NO. 2-Y AVERAGE 2.51, BARLEY NO. 3 AVERAGE 1.30, OATS NO. 2 AVERAGE 1.00, SOYBEANS NO. 1 AVERAGE 4.42, OLD EAR CORN AVERAGE 50.65, \*\*NEW EAR CORN AVERAGE 36.22

HAY, 35 STRAW, AND 44 EAR CORN. ALFALFA 90.00-150.00; MIXED HAY 75.00-130.00, TIMOTHY HAY 90.00-147.50; STRAW 84.00-115.00, EAR CORN 58.00-86.00

### CENTRAL PA. HAY AUCTIONS

SUMMARY OF CENTRAL PA HAY AUCTIONS FOR WEEK ENDING 10/9/87 PRICES PER TON LOADS 38 HAY, 8 STRAW AND 15 EAR CORN ALFALFA 85.00-132.50, MIXED HAY 65.00-92.50, TIMOTHY HAY 72.50-87.50, STRAW 57.00-95.00, EAR CORN 57.50-81.00

### Frederick Co. Hay

Buckeystown, Md.  
 Thursday, Oct. 22, 1987

Report Supplied by Auction

27 LOADS MARKET A LITTLE WEAKER ON ALL GRADES HAY NO FANCY HAY OFFERED.

ALFALFA, 5 FAIR TO GOOD, SOME WITH MOISTURE, 80.00-126.00, 3 DARK OR DAMAGED, 60.00-75.00, ALFALFA AND GRASS, 5 FAIR, SOME DAMAGED, 50.00-115.00, TIMOTHY HAY, 3 GOOD, 95.00-100.00, 2 FAIR, 70.00-82.00

MIXED HAY, 3 LOADS FAIR TO GOOD, 82.00-95.00, 1 DARK, 65.00, BROME GRASS, 87.00, STRAW, 3 LOADS FAIR, 109.00-112.00.

GOOD FIREWOOD, 67.50 CORD

### Regional Hay

October 19, 1987  
 Eastern, Pa.

On-Farm Sales

HAY & STRAW MARKET FOR EASTERN PA. (ALL HAY NO. 2 AND BETTER PRICES PAID BY DEALERS AT THE FARM AND PER TON) HAY AND STRAW STEADY  
 ALFALFA 75.00-110.00; MIXED HAY 65.00-90.00, TIMOTHY HAY 70.00-90.00; STRAW 55.00-80.00, MULCH 20.00-40.00

### LANCASTER CO.

AUCTIONS  
 SUMMARY OF LANCASTER CO HAY AUCTIONS FOR WEEK ENDING 10/9/87 PRICES PER TON. LOADS. 108

## Fast and Accurate Forage Analysis

- \*Forages
- \*Commercial Concentrates
- \*Ingredients

24 hour NIR service, ICP minerals & "Wet Chemistry" methods available. Write or call for complete details

1-800-344-2697 or 1-800-255-5344  
(NY only) (Northeast except NY)

New York DHI Cooperative

730 Warren Road, Ithaca, NY 14850 \* 607/257-1272

### Green Dragon Hay

Ephrata, Pa.

Friday, Oct. 16, 1987

Report Supplied by Auction

52 LOADS.  
 MIXED HAY, 77.00-130.00, TIMOTHY, 64.00-115.00, ALFALFA, 76.00-113.00; BROME GRASS, 81.00-105.00, CORN, 55.00-91.00 STRAW, 86.00-104.00, OATS, 2.50-2.60 BU., RYE 3.60-3.70 BU

### New Holland Hay

New Holland, PA

Monday, Oct. 19

Report Supplied by Auction

104 LOADS  
 ALFALFA, 90.00-150.00, 1 AT 172.00, AND 1 AT 175.00, MIXED HAY, 72.00-145.00, TIMOTHY 70.00-160.00 CLOVER, 82.00-105.00, ORCHARD GRASS, 60.00-107.00, STRAW, 95.00-130.00, EAR CORN, 52.00-80.00 OATS, 2.25 BU., RYE, 4.50-5.00

### Belleville Hay

Wednesday, Oct. 21

Belleville, PA

Report Supplied by Auction

21 LOADS HAY  
 ALFALFA, 90.00-145.00; TIMOTHY, 85.00-87.50, MIXED HAY, 82.50-115.00, 5 LOADS STRAW, 67.50-95.00, EAR CORN, 67.50-76.00

## Seeking Profits In Commodities Trading?

- Hedging
- Speculating
- Managed Account
- Commodity Options

Call Forney Longenecker, Commodities Investment Executive, At (717) 295-8914

SHEARSON LEHMAN BROTHERS  
 29 E. King St.  
 Lancaster, PA 17603



# HERE TO STAY!

## MAKE 1987 THE YEAR TO GET ACQUAINTED WITH NEW HOLLAND SALES STABLES, INC. - THE ACTION AUCTION

### MONDAY

FAT HOGS



### EARLY BIRD HOG SALE

7:30 AM  
 For Your Protection Your Hogs Must Be Identified

### 10:00 AM

HORSES MULES



### 11:00 AM



HAY  
 STRAW  
 GRAIN



1:30 PM  
 BEEF SALE  
 CALF, SHEEP,  
 GOATS

### WEDNESDAY

11:00 A.M.



HEIFERS, BULLS

### NEW HOLLAND SALES STABLES, Inc.

12 Miles East of Lancaster  
 on Route 23, New Holland, Penna

The Action Auction  
 717-354-4341

Mgr - Abe Diffenbach - 717-393-4464  
 Norman Kolb - 717-397-5538

Field Representatives  
 Alan Diffenbach 717-656-9806  
 Luke Eberly 215-267-6608 - 738-1865

### WEDNESDAY - 1:30 P.M. FEEDER PIG SALE



We endeavor to keep our barns cleaner than yours. State graded until 12 Noon

### THURSDAY

10:00 AM

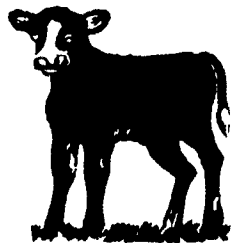
BULLS -



STEERS -  
 BEEF COWS

2:30 P.M.

CALVES



SHEEP  
 GOATS

Market your livestock thru New Holland Sales, your neighbor does  
 Pick-up your check before you leave