

Public Auction Register

**PUBLIC SALE
OF REAL ESTATE
OCT. 31st, 1987
1:00 P.M.**

Located 2 miles West of Bedford, Pa. near Agway bulk plant off Route 30, follow signs, at the Glenn and Pearlline Horner farm.

Consisting of approx. 160 acre farm, bank barn, loafing shed, 2 bedroom bungalow house, bath, modern kitchen, full basement, garage attached, hot water baseboard heat. Approx. 90 acres of cropland, approx. 21 acres woodland, balance pasture land, well water. Land in good state of cultivation.

Terms - Real estate 10% down day of sale. Bal. on delivery of deed.

Owner has right to accept or reject bid. For information phone 814-839-4156 or 814-276-3272.

AGNES MINTMIER
Guardian
New Paris, RD 4, Pa.

Stanley Claycomb, Auct.
#AU-000155-L

FRI OCT 30 - 12PM 52 Head Jerseys At Philip Bender Farm, 2 mis W of Grantsville, MD, on Rt 40 Clark A Yoder, Auct

FRI OCT 30 - 7PM Auctul Angie's Club Calf Sale at

Dr. Full's new sale barn Mt Airy, MD 1/2 mi N of I-70 on Rt 27, 1/2 mi E on Twin Arch Rd

WED OCT 28 THRU SAT OCT 31 - Horse Drawn Carriages, Sleighs & Anti-

ques At Martin's Sales Pavilion, 2 mis E of Inter-course, on Rt 340, Lanc Co, PA Martin Auctioneers

SAT OCT 31 - 65 Acre Limestone Farm, Farm Machinery & Personal Property Located along

Camp Rodgers Road, Ephrata, PA For Fred A & Naomi W Brubaker Kline & Kreiders Auctioneers 717-733-1006

PUBLIC AUCTION

REAL ESTATE, ANTIQUES,
HOUSEHOLD GOODS
SAT., NOVEMBER 28, 1987
10:00 A.M.

Location: Take Rt. 30 to Strasburg Sq. take May Post Office Rd. approx. 5 miles, turn East on White Oak Rd., turn North on Summit Hill Rd. approx. 1/4 mile to sale.

2 Acre corner lot w/ 2 story, 3 bedroom, log house. 2 story frame barn, pig pen and chicken house comb., brooder house, tool shed. Full line of antiques and household goods. Property inspection, Nov. 14 and 21 from 2 to 4 P.M.

TERMS BY MARION B. MOWRER

Kreider & Kline Auction Service
717-786-3394, AU000513L



PUBLIC AUCTION

OF
FARM EQUIPMENT &
HOUSEHOLD GOODS
SAT., NOVEMBER 14, 1987
@ 10:30 A.M.

Located along Dogwood Drive, East Cocalico Township, Lancaster Co., Pa. From Rt. 222 turn N on Rt. 897 to 2nd road L (Smokestown Rd.), first road R (Dogwood Dr.), 2nd farm on right.

Ford 3000 diesel Tractor; Sauder Loader w/ buckets; J.D. 520 Tractor, P.S., 3 pt. Hook-up; N.H. Haybine #479; Hay Wagon w/highsides; M.F. #3 Baler; 4 bar Hay Rake; Oliver #356 Mower; Little Giant 34' Elev.; Gehl #65 Grinder Mixer; N.I. One row #233 Corn Picker; McGurgy Grain Bin; J.D. N Manure Spreader; J.D. 2 bottom plow, 16"; 3 Section Spike Harrow; J.D. KBA Disk, 8'; Cultipacker; Harrow; Int. #245 2 row Corn Planter; Int. Grain Drill; J.D. 2 row Cultivators; J.D. Flat Wagon w/brakes; Approx. 10 Tons of Mixed Hay & 3 Ton Straw; 1968 F-100 FORK TRUCK; Truck Racks, 8'; Sm. Stationary Hammermill; Corn Sheller; Lincoln 225 Amp Welder; Sm. Gas Tank w/pump; Water pump & hose w/gas eng.; 2 Hog Feeders; Iron Water Troughs; Ladders; Truck Racks; Heavy Tow Chains; Tractor Chains; Chicken Coops; Wooden Wheel; Fans on Stands; Large Gates, Buck Saw; Many Sm. Items; 100' Elec. Cord; Bolt Cutters; Hog Wires; Grinding Stone w/elec. Motor; Furnace w/iron kettle; Set of 4 kitchen chairs; 4 Odd Chairs; Coffee Table; Trunk; Vanity Chair; Old School Desk; Crocks; Pear Grinder; Sleds, Glider; Monarch Wood Coal Cookstove; New Children's Picnic Table; Bicycles, 3, 5 & 10 Speed; Other items not mentioned.

TERMS BY:

ISAAC Z. & MARGARET HOOVER

NOTE: Sale to be held at Warren H. Martin Farm.

Alvin Horning, Auctioneer
#000433-L

HORNING FARM AGENCY, INC.
Main St., Morgantown, Pa. 19543
215-286-5183

Lunch Available
Specializing in Farms, Land and
Public Auctions

SAT OCT 31 - Antiques, HH For Francis Nolt along East Earl Rd in village of East Earl Nevin Martin & Lewis Groff, Aucts

SAT OCT 31 - 8 30AM Cons Horse Sale at Keister's Middleburg Auction Sales, Inc, Rt 522, 3 mis E of Middleburg, PA, 5 mis W of Selinsgrove, PA Don & Walt Keister, Owners

SAT OCT. 31 - 9AM Public Sale HH Goods, Gun, Farm Shed, Tools & Misc Items, Chevy Caprice, Antiques Located 7 mi south west of Mt Pleasant Mills, PA. Turn off Rte 104 at Fuller's Store and go toward Oriental at covered bridge make a sharp right turn, go to first road to left, first farm, watch for sale signs Owner Kathryn Finkenbinder Auctioneer Ken Smith.

SAT. OCT 31 - 9AM Real Estate, Antiques, HH, Car Along Mohler Church Rd, Ephrata Twp, Lanc Co, PA North State turn right onto Mohler Church Rd Terms by Anna Lydia Zschack Estate T Glenn & Timothy G Horst, Aucts

SAT OCT 31 - 9AM Real Estate, Antiques, Collectibles, HH Estate of Florence H Geist Between Mandata & Shamokin, PA, 2 mis off Rt 225, village of Red Cross Dockey, Dockey & Deppen, Aucts

SAT OCT 31 - 9 30AM Valuable Real Estate, Antiques, Personal Property, Guns at RD 1, Red Lion, PA approx 1 1/2 mi from Martinsville and from the Burkholder Rd along Snyders Corner Rd at Snyders corner in Lower Windsor Twp Estate of Emma E Herman Jacob A Gilbert, Brian L Gilbert, Auctioneers

SAT OCT 31 - 9 30AM 47 State Street, Millville, PA Next to Quakerette Restaurant Contents of Berton Ortwine Shoe Store and Harness Shop and contents of home Mrs Pearl Ortwine, Seller Nevius Auct Serv

SAT OCT 31 - 9 30AM Antiques, Collectibles, Lawn Eq, Books, Coins & HH Village of Oregon, PA, at 1407 E Oregon Rd (Rt 722) For Wm & Helen Wilson EM Murry Assoc. Aucts

A U C T I O N

CUSTOM FORD CENTURION VAN

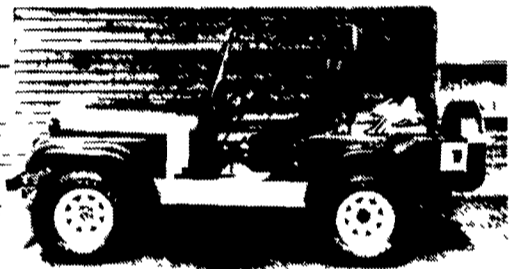
HAYNES HORSE TRAILER JD 750 TRACTOR, SERVICE TRUCKS & TANK TRAILERS, '64 WILLY'S, SHOP EQUIP., TOOLS, TRUCK PARTS, 40x60 STEEL BUILDING

For: GLOBE INDUSTRIAL SERVICES, INC. 2040 Lucon Rd., Skippack, PA 19474 (Montg. Co., bet. Rt. 73 & Rt. 113).

MONDAY, OCTOBER 26, 1987

10:00 A.M.

Sale will begin w/Tools & Parts
Vehicles at 12:00 Noon



VEHICLES - 1985 Ford Van Centurion 350 Crew Cab, pick-up bed, 460 cu. in. dual wheels, 11,300 miles, fully customized & loaded w/extras, set up to pull 5th wheel trailer; 1981 Haynes Horse Trailer 5th wheel, 2 horse w/dressing rm, dual axle, 8,000 GVW; John Deere Mod. 750 4 WD Tractor 291 hrs., #67 front end loader, #261 Grooming Mower 5' cut, post hole digger 8" auger, 1964 Willy's 4x4 - F-4 New Rebuilt Motor, new wheels & tires, lockout hubs, nicely reconditioned; 1979 Ford F-250 Pick-up 4 WD, 351 cu. in., 50,000 on new motor, Meyers Snow Plow; 1972 Ford F-350 w/Reading Utility Body, 4 spd. trans. w/liftgate & scissor lift, 73,525 mi.; 2 Penn Tank Trailer 65,000 gal., current insp.; 35' storage trailer.

BUILDING - 46x60 Wedgecore Steel Building, never assembled, full prints & parts included.

SHOP EQUIPMENT - Airco Gas Welder; 12T Fleetwood Floor Jack; body jacks; 20T bottle jacks; Buffalo bench vise; touch head & gauges; welding tables & metal lockers & benches; chain binders & chains; six 12x24 new & used tarps; comm. PTO pumps; smudge pots; Kodiak wood stoves; Agri Charger Battery Chargers; 20T Black Hawk Air Jack; Sun 1/4 hp bench grinder; 8 sets of scaffolding; fuel tanks w/pumps, Hotsy "Sand Jet" Sand Plaster #9775, Weathershield Crimp #T400 Brass Compression fittings 1/4 - 1 1/8, Torque Multiplier Jewel Type 2: Parts, Michelin casing F-20 Pilate 11x20 casing ready for recapping, brake linings, brass fittings, misc. new & used truck parts for Ford, Chev., GMC & Mack, Leaf Springs, 20" Flotation Tires (mounted).

OFFICE EQUIPMENT - Magnavox Security Viewer & 2 cameras (never been installed), wal. finished exec. desk & credenza, Lazy Boy leather exec. chair; formica top desk & chairs; 4 & 2 drawer file cabinets, misc. office chair & desk, Olympia ES101 elec. typewriter; 2 Mita DC 122 copiers; Simplex Time Clock & Cardholder.

TERMS - CASH OR ACCEPTABLE CHECK

Lunch

NOTE - Having liquidated a portion of their existing business, these vehicles & equipment are no longer needed in their daily operation. Good clean equipment.

PUBLIC SALE

FRIDAY, OCTOBER 30, 1987
1:00 P.M.

Located 17 miles south of Lancaster at east side of Village of Wakefield, Fulton Twp., Lanc. Co., Pa.

REAL ESTATE

82 Acre farm, more or less. Approximately 65 acres tillable balance permanent pasture, with Conowingo Creek passing through.

Bank barn with box stalls and horse stable. Attached hip roof barn with room for 39 cows.

Three concrete stave silos 10'x55', 12'x50' and 14'x65'.

Milk House: Dairy set-up only three years old.

Room to hang 10,000 lath of tobacco, tobacco shed, corn barn, implement shed, two bay carriage shed.

Two and one-half story brick house with seven rooms and bath. Slate roof.

Lot Of Road Frontage.

Inspection Anytime Except Sundays, Early Possession.
Sale 1:00 P.M.

SAMUEL E. & ELIZABETH KING,
Owners

Diffenbach's Auct.'s
Abe 225L Alan 2258L
Abe Jr. 1101L David 2324L

SANFORD
ALDERFER AUCTION COMPANY
501 Fairgrounds Road • Hatfield, PA • (215) 368-5477
Box 1 • Harleysville, PA • (215) 723-1171
PA NO. AU-00117-L