

Empire Sheep Co-Op To Meet In November

ALFRED, N.Y. — Annual meeting of the Empire Sheep Producers Cooperative, Inc. will be Nov. 13-14 at Alfred State College.

Hosted jointly by the West Central New York Sheep and Wool Cooperative based in Canaseraga and Alfred State, the two-day event opens at 7 p.m. Friday, Nov. 13, with a meeting of directors to which pool managers also have been invited. This session will be in the college's agricultural science building.

First general meeting will be at 9:40 a.m. Saturday, Nov. 14, when Dr. James Thompson, dean of Alfred State's School of Agriculture and Allied Health Technologies, will officially welcome the visitors. All Saturday activities will be at the college lake-lodge facility.

At 9:45 a.m., the group will hear from James G. Butler, vice president of the National Wool Growers Association, who will offer an update on association activities.

Barbara Gates of Interlaken, president, will preside at the Empire Sheep Producers annual meeting from 10:30 a.m. to 12:30 p.m. This will be followed by a lamb dinner.

The program then continues with a 1:30 p.m. session on sheep first aid.

At 2 p.m., Dr. Don Thompson of New South Wales, Australia, a practicing veterinarian who works primarily with flock health, will speak on Ovine Progressive Pneumonia (OPP). He is currently a research assistant at Cornell University in the field of OPP.

Completing the afternoon prog-

ram will be two other presentations:

2:30 p.m. — "Handling Systems for Sheep," by Tim Willsallen of Ithaca. Originally from Southern New South Wales, Australia, he now manages a 300-white faced

ewe operation in Ithaca.

3:30 p.m. — "1987 Program Review of NYS Cooperative Coyote Damage Control" by Thomas Tomasa, district supervisor, USDA Animal Damage Control Program.

Reservations for the program are in charge of Lee LaRoche of Belfast, president of the West Central New York Sheep and Wool Coop and assistant professor of animal science at Alfred State College.

Deadline for reservations is Nov. 2. Professor LaRoche may be contacted at 607-587-4714 or 716-365-2249.

Commercial exhibits of interest to sheep producers will be on display both days.

Unionville Beef Winners Chosen

UNIONVILLE — Tiffany Rohrer of Nottingham showed the Grand Champion Market Steer at the Chester County 4-H Baby Beef Show last Saturday in Unionville. Anita Howe, Downingtown, showed the Reserve Champion at the 63rd annual Unionville Community Fair.

Erica and Matthew McClellan of Fox Hill Farm, Unionville, exhibited Champion and Reserve Champion Angus heifers respectively. Clarise Tittle of Atglen showed the Grand Champion Hereford heifer.

Ribbons in the Market Steer classes went to Matthew McAllister, Spring City, Champion, and Walter Russell, Downingtown, Reserve Champion Light weight; Tiffany Rohrer, Champion, and Anita Howe, Reserve Champion Medium weight. Also to David Howe, Champion, and Vance Dietz, Reserve Champion Light Heavy weight. Both boys are from Downingtown.

Lane Lineberger, Downingtown, and Rob Rohrer, Nottingham, showed Champion and Reserve Champion Heavy weight Market Steers, respectively.

Fitting and showmanship honors went to Tiffany and Rob Rohrer, first and second Senior show-

men; Matthew Howe, Downingtown, and Matthew McClellan, first and second Junior showmen;

and Jonathon Howe, Downingtown, and Chris Bremer, Parkersburg, first and second First Year showmen.

Hostetler Receives Award

UNIVERSITY PARK — Kathryn Hostetler, Cambria County, received a Distinguished Service Award from the National Association of Extension Home Economists at the association's annual meeting in Louisville, Kentucky, October 4-8.

A home economist with Penn State's Cooperative Extension office in Cambria County, Mrs. Hostetler was cited for her innovative programming and work with young homemakers. "Cambria County Cooperative Extension provides a program of interest to young families," Mrs. Hostetler said about the young homemakers program. Another successful program is the family strengths program, which provides financial management and parenting information to young families through already existing parents' associations. Mrs. Hostetler is also the

Cambria County 4-H youth coordinator of the various 4-H camps.

A native of Millerstown, she holds a bachelor of science degree in home economics from Indiana University of Pennsylvania, and completed her master of science degree from the same institution in 1981.

Mrs. Hostetler was the 1980

recipient of the National Association of Extension Home Economist Fellowship Award and is a member of National and Pennsylvania Associations of Extension Home Economists.

She is married to Ronald L. Hostetler, who is also on the Cambria County Extension staff. They have a son and a daughter.

Honey Bee Quarantine Imposed

HARRISBURG — The Pennsylvania Department of Agriculture has imposed a quarantine order restricting the movement of honey bees into, out of or within the Commonwealth effective October 14. The action was taken to prevent the further spread of the Varroa mite and limit its economic consequences to the state's agri-

cultural industry.

The movement of honey bees into the Commonwealth is prohibited without certification by an originating state entomologist that the bees are mite-free. Similar certification by the Pennsylvania Department of Agriculture is required for movement of honey bees within the state or out of the

(Turn to Page D17)



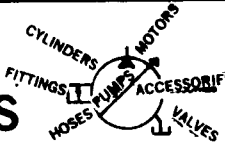
MONTEREY SHOP

- OVERHEAD GARAGE DOORS
- DISTRIBUTOR & INSTALLATION

196 MONTEREY ROAD (717) 656-0513
BIRD-IN-HAND, BETWEEN 6:30 to
PA 17505 7:00 A.M.

Ephraim Stoltzfus - Proprietor

BEILER HYDRAULICS



WHOLESALE • RETAIL
SALES • SERVICE • INSTALLATION

BOX 255A RD #1
N. SHIRK R.D.
NEW HOLLAND, PA. 17557
(717) 354-6066



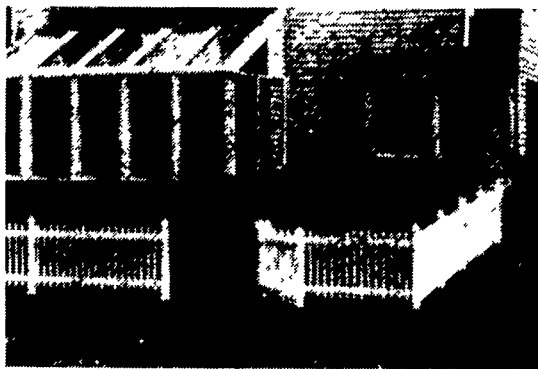
"P.V.C. WHITE RAIL FENCE"

Perfect For Farm, Home, Recreation Area, Or
Wherever Fence Is Used

2, 3 OR 4 RAIL FENCING



3-Rail Fence w/Gates
Never Need Paint"



PVC Picket Fence

P.V.C. MANUFACTURED PRODUCTS

- | | | | |
|------------------|---------------|---------------|------------|
| Lamp Posts | Picnic Tables | Sand Boxes | Sign Posts |
| Yard Fence | Horse Fences | Gazebos | Dog Cages |
| Race Track Fence | Trellis | Mailbox Posts | |

QUALITY FENCING & SUPPLY, INC.

R.D. #1, Box 428

(717) 354-9760

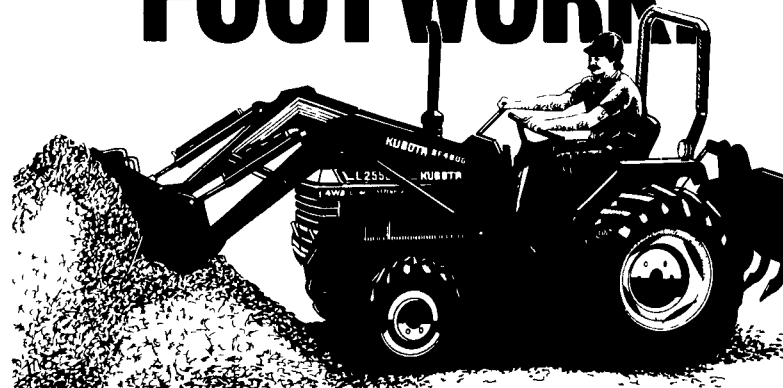
New Holland, PA 17557

Authorized Dealers

UMBERGER'S of FONTANA
Lebanon, PA
(717) 867-5161

G. BENJAMIN MILLER, JR.
Rouzerville, PA 17250
(717) 782-2386

IT DOES YOUR FOOTWORK



The new Kubota L2550 GST Diesel Tractor will save you a lot of footwork, making weekend farming or light construction a little easier.

Kubota's new Glide Shift Transmission lets the driver shift gears without using a clutch pedal. Saving you footwork. And saving time, fuel, and unnecessary wear and tear on the engine.

Superior hydraulics give the Kubota L2550 GST front loading lift capacity of more than a ton.

Four-wheel drive and direct fuel injection assure power and economy. Implements for mowing, tilling and even towing give a versatility any owner will appreciate.

Let the Kubota L2550 GST save you footwork today.

KUBOTA
Nothing like it on earth.™

Good Selection Of
Used Kubota Tractors

Over 100 Kubotas
In Stock

4.5% APR FINANCING
FOR 24 MONTHS

730 South Broad St
Litz Pa 17543
on Route 501
6 miles North
of Lancaster
Lancaster County

KELLER BROS.
SINCE 1921 TRACTOR CO.

(717)
626-2121

PARTS ★ SALES ★ SERVICE

R 7 Lebanon
Pa 17042
Rt 419 1 mile West of
Schaefferstown
Buffalo Springs
Lebanon County

(717)
949-6501