

New York Beef Cattlemen's Association Tele Auction

CANANDAIGUA, New York — The bidding will be by telephone and from the floor at the New York Beef Cattlemen's Association second annual Tele-Auction Oct. 30 at the Finger Lakes Livestock Exchange here.

More than 1,000 head of health managed feeder cattle have been consigned to this direct marketing program. Coordinator Lee Kraszewski of Corning said more than 500 steer calves, 300 heifer calves and 250 yearlings are expected to be sold at the Tele-Auction which will begin promptly at 7 p.m. Oct. 30.

The bulk of the feeder cattle in the Tele-Auction have been consigned by beef producers west of Route 81 but all sections of the state are represented. Many of the cattle are crossbred.

All of the feeder cattle have had to meet health management requirements including vaccinations as recommended by the New York Veterinary Association and the Bovine Practitioners Association for acceptance in this Tele-Auction. Response following the 1986 Tele-Auction showed buyer

satisfaction because these health management requirements minimized any health problems when the cattle went into the feedlot. This acceptance by buyers has resulted in much interest in advance of the Oct. 30 Tele-Auction.

All of the feeder cattle consigned to the Tele-Auction will be weighed and graded according to USDA standards at the sale barn and then penned in uniform lots. The grading and sorting will be under the supervision of Dennis Widga of the USDA and Peter Comerford of the State Ag & Markets Department. "Skip" Bevin and Wilson Hall will also be assisting the Cattlemen's Sale committee with the grading, sorting, and many other details of the Tele-Auction. Buyers will be able to preview the sale cattle from 3-7 p.m. Oct. 30.

Buyers have been given the option of bidding over the telephone as each lot is described or of being in the audience and making bids in person. The Mid-Atlantic Market Association communication system will be used for the Tele-Auction and the telephone

bidding.

Beef producers who are not consignors are encouraged to attend the Tele-Auction to learn more about this alternative marketing program sponsored by the New York Beef Cattlemen's Association.

There were 1,200 head of feeder cattle in the first Tele-Auction in 1986 purchased by buyers from five states. "The large numbers of

uniform health managed cattle attracted the larger order buyers and enhanced both price and demand. We expect even better results this year," said Kraszewski.

The New York Beef Cattlemen's Association recently received an Ag & Markets grant of \$10,000 to expand the Tele/Direct Market program with emphasis on obtaining feedlot and carcass data to return to the producer. This data

will also be incorporated into the existing Herd Test Performance Program.

Working closely with the Cattlemen in all aspects of the marketing program are Cornell University and N.Y. Ag & Markets. More information may be obtained from Lee Kraszewski, RD1, Box 120, Corning, N.Y. 14830. 607-732-8619.

Task Force To Study Environmental Impact Of Mushroom Industry

The American Mushroom Institute (AMI) announced today that a special task force has been established to deal with environmental matters related to surface water problems in the Chester County area. Members are Michael Pia, President, AMI, Dr. Paul Wuest, Department of Plant Pathology, Penn State University, University Park, Pa.; Charles C. Brosius, Chairman, AMI Research Committee; Dr. Kenneth Lomax,

Department of Agricultural Engineering, University of Delaware, Newark, De. and Charles Harris, Executive Director, AMI.

The task force will seek final approval from the Pennsylvania Department of Environmental Resources (DER) for the publication issued in February 1984 entitled, "Best Practices For Environmental Protection in the Mushroom Farm Community." This was prepared by a coalition of

mushroom growers, county and state officials with support from the Chester County Commissioners. It was in production for four years and represents the best thinking of growers and governmental officials from county, state and federal levels relative to acceptable practices. With approval from commonwealth officials, it will be required reading for those involved in the mushroom industry.

Also, the task force will seek funds from selected governmental agencies, universities and foundations for ecological studies that will supplement current studies underway in the southern Chester County water shed. It will seek to establish a closer working liason with commonwealth officials and lay organizations, in Pennsylvania and Delaware, interested in maintaining clean streams.

"The mushroom industry has a sincere interest in good farm practices which will serve to prevent possible pollution of local streams. We are pleased to be able to join other groups in their efforts to maintain clean water supplies before they flow into Delaware," Michael Pia said today.

Atlantic District

34 To Meet

SOUTHAMPTON (Bucks Co.) — Atlantic Dairy Cooperative District 34 will hold its annual dinner meeting Oct. 28 at 7 p.m. at the Prescott Fire Company, Lebanon.

Dr. Paul E. Hand, Atlantic's general manager, will be the guest speaker. Hand will report on the cooperative's fiscal year and will review the Atlantic merger.

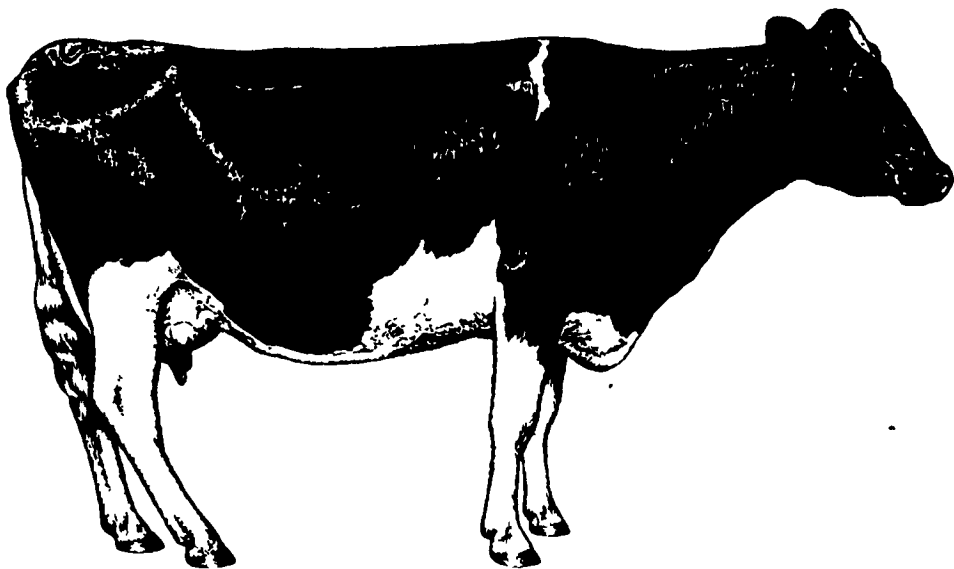
In other business, Roy W. Hetrick of Bernville, District 34 director, will present 25- and 50-year membership awards.

25-Year Membership Award

Robert Bashore, Lebanon; Elmer L. Bross, Bethel; Jame M. Fair, Mohrsville; Fitterling Farm, Mohrsville; Merlin Grube, Mohrsville; Dale Hetrick Farm, Bernville; Richard H. Hoffman, Bernville; John H. Jacoby, Mohrsville; Nicholas J. Kopicz, Mohrsville; John R. Lash, Bernville; Arthur D. Luckenbill, Mohrsville; Skyline Acres, Inc., Bernville; Daniel Unterkofler, Mohrsville; Leroy C. Zweig, Shoemakersville; Clifford R. Berger, Fredericksburg; Malcolm J. Sonnen, Richland; Willow Maple Farm, Newmangtown; Edward M. Edris, Fredericksburg.

50-Year Membership Award

Heindel Farms, Womelsdorf.



VITAMIN E

Recent Ohio Research indicates that the increased incidence of mastitis and retained placentas is caused by inadequate levels of Vitamin E in Dairy Cow Rations. This is prevalent in the Selenium-Deficient Northeast. As a result, Agway immediately increased Vitamin E levels in all formula feeds and mineral premixes.

Other feed companies will probably follow suit. Shouldn't you be using FEED FROM THE LEADER?

Working for people who work the land

FARM
ENTERPRISE
SERVICE

