

New Holland Sales Stables

New Holland Dairy
 Wednesday, Oct. 14, 1987
 Report supplied by auction
 REPORTED RECEIPTS OF 106 COWS, 62 HEIFERS, AND 9 BULLS MARKET STEADY
 LOAD OF PERRY CO. FRESH COWS 825.00-1325.00
 LOAD OF PA FRESH COWS 710.00-1500.00
 LOAD OF CANADIAN FRESH COWS 850.00-1350.00; SPRINGERS 675.00-925.00
 LOAD OF NY PUREBRED & GRADE FRESH COWS 1075.00-1475.00, SPRINGERS 1000.00-1875.00
 LOCALLY CONSIGNED COWS 600.00-1200.00
 SPRINGING HEIFERS 625.00-975.00
 OPEN HEIFERS 390.00-750.00
 BULLS 600.00-760.00.

Penns Valley Livestock

Centre Hall, Pa.
 Tuesday, Oct. 13
 Report Supplied by Auction
 BEEF COWS: UTILITY AND COMMERCIAL 46.50-52.00, CUTTERS 42.50-46.00; CANNERS 38.00-42.00;

SHELLS 30.00.
 HEIFERS: GOOD 59.00-63.50; STANDARD 52.00-57.50; COMMERCIAL 42.00-50.00.
 STEERS: CHOICE 61.00-65.50; GOOD 57.50-60.00; STANDARD 53.00-57.00
 BULLS: STANDARD 52.00-54.00.
 FEEDER CATTLE: 300-500 LBS. LARGE FRAME 65.00-80.00; 300-500 LBS SMALL FRAME 55.00-69.00; 500-700 LBS. LARGE FRAME 60.00-74.00, 500-700 LBS SMALL FRAME 54.00-65.00.
 VEAL CALVES: GOOD 90.00-96.00, STANDARD 75.00-87.00, UTILITY 67.00-74.00.
 FARM CALVES: BULLS 95.00-140.00; HEIFERS 90.00-105.00
 HOGS: 48.50-49.50.
 SOWS: 45.75-46.25.
 BOARS: 40.00-41.00.
 SHOATS: 25-30 LBS. PER HEAD 17.00-24.00; 30-35 LBS. PER HEAD 25.00-37.00; 35-50 LBS PER HEAD 35.00-64.00
 LAMBS 54.00-66.00
 SHEEP 24.00-31.00

Oklahoma Cattle

Wednesday, Oct. 14
 Report supplied by USDA
 WEEKLY SUMMARY. FEEDER STEERS AND HEIFERS 1.00-2.00 HIGHER, CALVES 3.00-4.00 HIGHER

SLAUGHTER COWS STEADY LIMITED TEST SLAUGHTER BULLS FIRM. RECEIPTS THIS WEEK 13,700 BULK SALES FOR THE WEEK FOLLOW-
 FEEDER STEERS: MEDIUM AND LARGE FRAME 1, 300-400 LB 98.00-107.00; 400-450 LB 93.00-101.75, 450-500 LB. 91.00-97.00; 500-600 LB 83.00-89.00; 600-700 LB. 78.75-85.50; 700-800 LB 74.75-79.50; 800-885 LB 71.80-74.50.
 FEEDER HEIFERS: MEDIUM AND LARGE FRAME 1, 300-400 LB. 82.00-87.75; 400-500 LB 78.50-85.75, 500-600 LB 74.75-80.25; 600-700 LB 71.50-76.50; 700-750 LB. 67.25-72.00.
 SLAUGHTER COWS. BREAKING UTILITY, FEW COMMERCIAL 2-4 44.00-49.00 BONING UTILITY 1-2 43.25-49.50. CUTTER 1-2 41.50-46.75. CANNER AND LO DRESSING CUTTER 37.00-41.50.
 SLAUGHTER BULLS: Y.G 1, 1000-1500 LB. 48.00-56.00, 1500-1900 LB 52.00-57.00

Valley Livestock

Athens, Pa.
 Monday, Oct. 12, 1987
 Report supplied by auction
 HOLSTEIN HFR CALVES TO 120.00
 VEAL CALVES TO 88.00
 VEALER BULL CALVES TO 136.00

SLAUGHTER CALVES 65.00-80.00.
 GRASSERS & FEEDERS 40.00-70.00
 LAMBS 55.00-71.00
 SHEEP 25.00-38.00
 HOGS, 200 TO 250 46.00-50.00.
 SOWS 36.00 43.00
 BOARS 30.00 46.00.
 PIGS, EACH 30.00-42.50.
 HEIFERS 42.00-55.50.
 STEERS 50.00-59.75.
 STEERS, FEEDER 50.00-80.00
 BULLS 46.00-57.00
 COWS, UTILITY 46.00-50.00
 COWS, FAT 44.00-49.00
 COWS, MEDIUM 43.00-45.00.
 COWS, POOR OR SMALL 32.00-41.00
 CATTLE MARKET REAL STRONG CALF MARKET STEADY
 PONIES TO 130.00
 GOATS TO 50.00.
 REMARKS: PRICES ARE HOLDING REAL GOOD ON ALL LIVESTOCK FEEDER SALE 1ST MONDAY OF EACH MONTH, DAIRY SALE 3RD THURSDAY OF EACH MONTH

Belleville Livestock Auction

Belleville, Pa.
 Wednesday, Oct. 14, 1987
 Report Supplied by PDA
 CATTLE 115 PDA...Compared with last weeks market. Standard slaughter steer, individual 51.10 Breaking Utility and Commercial sl. cows 46.00-49.35, one 50.60, Cutter and Boning Utility 43.25-46, Canner and Low Cutter 38.00-42.75, Shells down to 36.25. Yield Grade No. 1, 1340 lbs sl bull, individual 46.50.
 CALVES 121...Choice vealer, individual 86.00, Standard and Good 75/100 lbs 82.00-92.00, few Utility 60/80 lbs. 58.00-75.00. Farm Calves: Holstein Bulls 90/130 lbs 90.00-124.00; few Holstein Heifers 95/110 lbs. 94.00-108.00.
 HOGS 64...Few Lots US No. 1-3 210/245 lbs. barrows and gilts 48.10-53.50 Few US No. 1-3 285/540 lbs. sows 45.00-50.25. Boars 37.00-38.00
 FEEDER PIGS 277...US No. 1-3 20/35 lbs. feeder pigs 22.00-31, 35/50 lbs. 28.00-39, 55/65 lbs. 38.00-45.00 --- all per head.
 SHEEP 48...Good & Choice 60/110 lbs wool sl. lambs 58.00-68.00; Good 50/80

lbs. feeder lambs 57.00-71.00. Slaughter ewes 21.00-30.00.
 GOATS 9...Few Large 30.00-48.00, few Kids 12.00-15.00 --- per head.
 HOLSTEIN DAIRY COWS \$650.00-\$1100.00 PER HEAD.

Joliet Cattle

Des Moines, Iowa
 Tuesday, Oct. 13, 1987
 REPORTED SALES FOR TUESDAY 6,400 WEEK TO DATE: 14,900 LIVE SALES TRADE ACTIVE. SLAUGHTER STEERS AND HEIFERS FIRM DEMAND AND SELLER INTEREST GOOD. GOOD CLEAN UP THIS WEEK OF HEAVY AND OVER FAT CATTLE.
 LIVE SALES SLAUGHTER STEERS: MOSTLY CHOICE 2-4 1050-1300 LBS. 66.00-67.00, FEW 67.50. MIXED GOOD AND CHOICE 2-3 AND SMALL LOTS 65.00-66.00. SLAUGHTER HEIFERS: MOSTLY CHOICE 2-4 950-1100 LBS. 65.00-66.00 MIXED GOOD AND CHOICE 2-3 AND SMALL LOTS 64.00-65.00
 MOST CATTLE DELIVERED TO THE PACKING PLANTS WITH WEIGHING CONDITIONS EQUIVALENT TO 3% SHRINK AT THE FEEDLOTS.
 CARCASS BASIS STEERS AND HEIFERS FIRM TO 1.00 HIGHER.
 WEIGHT ONLY STEERS: MOSTLY CHOICE 2-4 600-900 LBS. 105.00-106.00, FEW 106.50. WEIGHT ONLY HEIFERS: MOSTLY CHOICE 2-4 550-800 LBS 103.00-103.50, FEW 104.00.
 DRESSED PRICES BASED ON HOT WEIGHTS.

St. Louis Cattle, Hogs

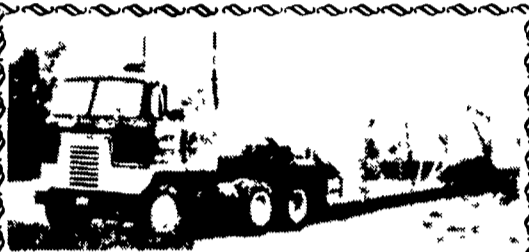
Thursday, Oct. 15, 1987
 CATTLE & CALVES 1,000: (900 SLTR, 100 FDRS) BULK OF RECEIPTS FEEDER CATTLE FOR THURSDAY'S AUCTION OPEN MARKET CONSISTS OF COWS. TRADING MODERATELY ACTIVE. COWS STEADY.
 SLAUGHTER CLASSES: COWS: CUTT, UTIL, COMM BULK SALES HI-DRESS % LO DRESS % BREAKING 2-4 42.00-45.00.
 BONING 1-2 44.00-46.00; 46.00-47.00.
 CANNER & CUTTER 1-2 40.00-44.00.
 SHELLY CANNER 1-2 36.00-40.00.

AUCTION SPECIAL FEEDER & STOCKER CATTLE

FRI., OCTOBER 23, 1987 7 P.M.

All weights & breeds.
 Contact Vintage Sales Stables, Inc.
 Paradise, PA

L. Robert Frame, Manager
 Office, 717-442-4181
 Home, 215-458-8518
 Call Anytime.

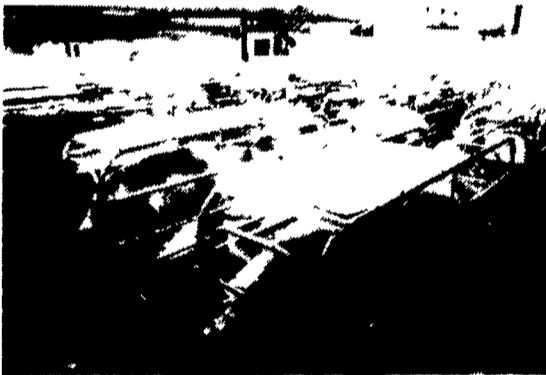


FOR SALE:

42' Car Carrier, Whitehead - Kales, Guted For Hauling Hay or Straw. Completely Re-done. New Radial Tires, Brake Lining, Wheel Bearings & Air Bags. \$19,900 Or With Tractor \$19,900

Phone 412-245-8524
 or after 3 pm 412-438-4260

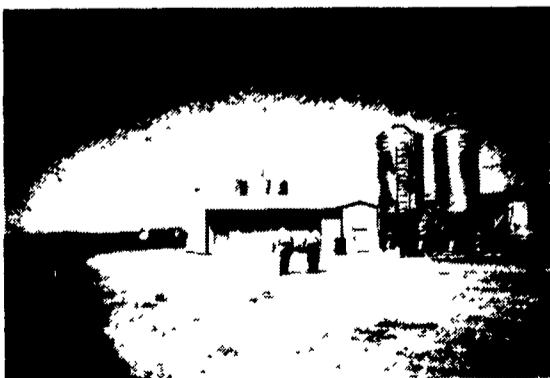
PENNFIELD GROWER OPPORTUNITIES



We have an immediate need for several swine finishing facilities.

We are maximizing returns for our current growers by using single source feeder pigs, maintaining buildings at 100% efficiency and offering competitive contracts.

If you have an existing facility or would like to build a new facility, please contact our Swine Division at 717-295-8783 or 1-800-732-0467.



PENNFIELD CORPORATION

711 Rohrerstown Rd., P.O. Box 4366, Lancaster, PA 17604

- AN EQUAL OPPORTUNITY EMPLOYER -