

National Grain Summary

Washington, D.C.

Wednesday, October 7, 1987

WHEAT MARKETS MIXED, UP 1 CENT AT KANSAS CITY, DOWN 1 1/4 CENTS AT MINNEAPOLIS, DOWN 1 TO 2 CENTS AT PORTLAND AND DOWN 4 CENTS TO UP 1 CENT AT KANSAS CITY, DOWN 1 1/2 CENTS AT MINNEAPOLIS, DOWN TO 4 CENTS AT SOUTHERN IOWA POINTS AND STEADY TO UP 1 CENT PER BUSHEL AT OMAHA. SOYBEANS RANGED STEADY TO UP 1 CENT AT KANSAS CITY, UP 2 3/4 CENTS AT MINNEAPOLIS, UP 1 TO 3 CENTS AT SOUTHERN IOWA POINTS AND DOWN 1 1/2 TO UP 3 1/2 CENTS PER BUSHEL AT ILLINOIS PROCESSORS. CHICAGO OCTOBER SOYBEAN MEAL FUTURES MARKET ADVANCED 90 CENTS PER TON AND OCTOBER SOYBEAN OIL ROSE 53 POINTS.
DATE CHANGE YEAR AGO 10/7/87 10/6/87 10/8/86.
WHEAT: KANSAS CITY 2.73-2.76 + 1 2.50-2.56 MINNEAPOLIS 3.09 - 1 1/4 2.91 PORTLAND 3.02-3.05 - 1 - 2 2.72-2.74 ST. LOUIS 2.73-2.82 - 4 + 1

2.59-2.63.
CORN, U.S. NO. 2 YELLOW: KANSAS CITY 1.66-1.70 + 1 1.45-1.47 MINNEAPOLIS 1.52 - 1 1/2 1.25 SO. IOWA 1.57-1.60 1/2 - 3 - 4 1.25-1.30 OMAHA 1.53-1.55 UNCH + 1 1.34-1.35.
SOYBEANS, NO. 1 YELLOW: KANSAS CITY 5.12-5.18 UNCH + 1 4.58-4.73 MINNEAPOLIS 5.10 1/2 + 2 3/4 4.57 3/4 SO. IOWA 5.14-5.19 + 1 + 3 4.57-4.63 C. ILL. PROCESSORS 5.29 1/2-5.38 1/2 - 1 1/2 + 3 1/2 4.78-4.82.
*KANSAS CITY, U.S. NO. 1 HARD RED WINTER WHEAT, ORDINARY PROTEIN MINNEAPOLIS, U.S. NO. 1 DARK NORTHERN SPRING WHEAT, 14% PROTEIN; PORTLAND NO. 2 SOFT WHITE WHEAT; AND ST. LOUIS, NO. 2 SOFT RED WINTER WHEAT.
GRAIN FUTURES CLOSE:
KANSAS CITY (DEC) WHEAT 2.90 + 1 2.49 3/4.
MINNEAPOLIS (DEC) WHEAT 2.81 - 1/4 2.61.
CHICAGO (DEC) WHEAT 2.97 + 3/4 2.67 1/4
(DEC) CORN 1.83 + 1/2 1.65.
(NOV) SOYBEANS 5.42 1/2 + 4 3/4 4.72 3/4.
EXPORT: BARGE OR RAIL, GULF

DELIVERY.
NO. 1 HARD RED WINTER WHEAT ORDINARY PROTEIN 3.02 + 1 NO. 2 SOFT RED WINTER WHEAT 3.03-3.07 UNCH + 2 NO. 2 YELLOW CORN 1.95-1.96 UNCH - 1/4 NO. 2 YELLOW SORGHUM 3.16-3.27 + 2 NO. 2 YELLOW SOYBEANS 5.57-5.58 + 4 1/2 + 5.

Keister's Hay

Middleburg, PA
Tuesday, Oct. 6

Report supplied by auction
12 LOADS HAY. ALFALFA, 90 00-135 00, MIXED HAY, 60 00-113.00; STRAW, 65 00, 2 LOADS EAR CORN, 66 00 AND 67 50, 3 LOADS RYE, 3 10-3 25 BU, OATS, 1 85 BU

Westminster Hay

Westminster, Md.
Tuesday, Oct. 6, 1987

Report Supplied by Auction
13 LOADS.
FOURTH CUTTING ALFALFA, GOOD, 118.00; TIMOTHY, GOOD, 72.00, VERY GOOD, 2.10 BALE; MIXED HAY, 47.00, GOOD, 77.00, 2.50 BALE STRAW, 70.00; WOOD, 30 00 AND 62.50 CORD.

New Wilmington Hay

New Wilmington, PA.
Friday, Oct. 2, 1987

Report Supplied by Auction
20 LOADS HAY.
ALFALFA 63.00-119.00; MIXED HAY 62.00-120.00; CLOVER 1 @ 67.00; TIMOTHY 2 @ 61.00 & 67.50.
STRAW 2 LOTS 72.00 & 87.00.
EAR CORN 13 LOTS 55.00-63.00.
OATS 1 @ 1.75/BU.

New Holland Hay

New Holland, PA
Monday, Oct. 5

Report Supplied by Auction
93 LOADS.
ALFALFA, 90 00-155.00, TIMOTHY, 92.00-150 00; MIXED HAY, 62 00-147.00; STRAW, 87 00-155 00, CORN, 62 00-90 00; GRASS, 90 00-100 00, OATS, 1 95-2 50 BU; RYE 2 75-4 10 BU

Good's Hay

Leola, Pa.
Wed., Oct. 7, 1987

Report Supplied by Auction
75 LOADS
ALFALFA, 66 00-111 00, MIXED HAY, 75 00-117 00, TIMOTHY, 67 00-131 00, STRAW, 62 00-125 00, CORN, 63 00-77 00, RUE, 3 00-4 00 BU REED'S CANARY GRASS, 81 00-116 00, GRASS, 81 00-107 00

Buffalo Valley Produce Hay and Straw

Mifflinburg R3
Thursday, Oct. 8

Report Supplied by Auction
4 LOADS
CORN, 55 00-60 00; HAY, 82 00; STRAW, 57 50

Leinbach's Hay

Shippensburg, PA
Oct. 3 & 6

Report supplied by Auction
21 LOADS.
ALFALFA, 81.00-132.00; MIXED HAY, 49.00-95.00; TIMOTHY, 48.00-95.00; EAR CORN, 61.00-83.00; RYE, 2.75-3.40 BU; FIREWOOD, 36.00 PICK-UP LOAD.

Penns Valley Livestock

Centre Hall, Pa.
Tuesday, Oct. 6

Report Supplied by Auction
BEEF COWS: UTILITY AND COMMERCIAL 46.00-49.00; CUTTERS 41.00-45.50; CANNERS 38.00-40.50; SHELLS 37.00.
HEIFERS: COMMERCIAL 46.00-49.25.
STEERS: GOOD 62.00-64.50, GOOD 56 00-60.00; STANDARD 48.75-54.00.
BULLS: GOOD 59.00-62.00; STANDARD 50.50-55.00.
FEEDER CATTLE: 300-500 LBS. LARGE FRAME 63.00-78.00; 300-500 LBS. SMALL FRAME 55.00-64.00; 500-700 LBS. LARGE FRAME 60.00-71.00; 500-700 LBS. SMALL FRAME 52.00-60.00

VEAL CALVES: GOOD 91.00-96.00; STANDARD 81.00-88.00; UTILITY 65.00-79.00.

FARM CALVES: BULLS 95.00-120.00; HEIFERS 90.00-100.00.
HOGS: 49.00-51.25.
SOWS: 45.00-47.50.
BOARS: 38.00-40.00.
SHOATS: 25-30 LBS. PER HEAD 24.00-31.00; 30-35 LBS. PER HEAD 34.00-38.00; 35-50 LBS. PER HEAD 40.00-49.00.
LAMBS: 60.00-77.00.
GOATS PER HEAD: 15.00-40.00.

East Coast Carlot

Wednesday, Oct. 7, 1987

Report supplied by USDA
EAST COAST CARLOT MEAT TRADE DELIVERED PRICES (CAF) BOSTON TO WASHINGTON AREA INCLUSIVE
COMPARED TO TUESDAY'S CLOSE CHOICE AND PRIME SPECIAL FED VEAL GENERALLY STEADY GOOD AND CHOICE BONING VEAL STEADY, INSHIPPED UNTESTED CHOICE AND PRIME SPRING LAMB NOT ESTABLISHED, GENERALLY SIFADY. TONE

VEAL CARCASS HIDE-ON CHOICE & PRIME SPECIAL FED 150 HEAD
220-280 LBS 204 00-206 00, GENE-ALLY STEADY

GOOD AND CHOICE BONING TYPE - HIDE ON NORTHEASTERN SUPPLIERS 625 HEAD

65-75 LBS 113 00-114 00, STEADY 55-64 LBS 111 00-112 00 45-54 LBS. 109 00-110 00. 35-44 LBS 107 00-108 00. 34 LBS. DWN 105 00-106 00 INSHIPPED
NO SALES REPORTED.

New Holland Horses

New Holland Sales Stables
New Holland, PA

Monday, Oct. 5, 1987
Report supplied by Auction
REGISTERED RECEIPTS OF 282 HEAD OF HORSES, MULES AND PONIES.
MARKET. STEADY.
LOCAL

DRIVING HORSES: 300 00-975 00
RIDING HORSES: 250 00-450 00.
BETTER RIDING HORSES 535 00-685 00.
LIGHTWEIGHT KILLERS: 200 00-300.00.
HEAVYWEIGHT KILLERS: 350 00-465 00
MARE PONIES. 30 00-60 00
COLTS: 10 00-30 00
GELDING PONIES: 30 00-60 00
LARGER PONIES: 100 00-165 00

Green Dragon Livestock Sales



Location: Ephrata RD 4. 1 mile N. on North State St., Ephrata.

COWS COWS COWS SALE EVERY FRIDAY

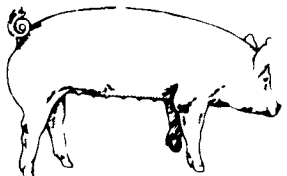
Lots of good Northern Feeder & Stockers. Slaughter Cows - Bull Steer, Veal-lamb.

11:00 A.M.-Beef Sale 200-300 each week.
1:00 P.M.-Dairy Sale.
7:00 P.M.-Small Animal Sale.

For Special Sales and Herd Dispersals on farm or at our barn or other market information call: Office 717-733-2444, Home 717-838-4318.

WALTER H. RISSER, Proprietor

All out of state and new buyers must have cash or certified check or current letter of credit from bank.



EMERY'S BUYING STATION

OPEN TO RECEIVE YOUR MARKET HOGS

AT THE GREEN DRAGON MARKET RD 4, EPHRATA, PA 17522 1 MILE NORTH OF EPHRATA ON NORTH STATE STREET.

HOURS: MONDAY, TUESDAY, and WEDNESDAY 7:00 A.M. to 11:30 A.M.
215-458-5677 Residence
717-733-9648 Office

215-458-5677 Residence
717-733-9648 Office

YOU ARE PAID FOR YOUR HOGS IMMEDIATELY

Ken & Lois Emery, Proprietors



Corn That Stands Through The Fall

That corn crop you've labored over won't do you any good if the ears are lying on the ground at harvest time. But Funk's G-Hybrids will stand right through the harvest.

And they'll not only stand, they'll produce record breaking yields. With varieties like G-4027, tops in its field in New York. Or G-4446, a record yielder in Pennsylvania. Or G-4626, a standout in southern PA and Delmarva areas.

And each Funk's variety is backed by Hoffman research. We annually run more than 50 test plots to ensure that only the best yielding varieties reach your fields.

When you're looking for outstanding yields this planting season, call your local Hoffman seed representative. Or call Hoffman Seeds direct. We'll deliver a corn crop that stands through the fall.



Hoffman Seeds, Inc.

The Yield Experts
Landisville, PA 17638
Call Toll Free 1-800-233-0137 In PA 1-800-732-0456

The limitation of warranty and remedy on the tag attached to each bag of Funk's G Hybrids and RA Hybrids sold is a part of the terms of sale thereof. Funk's is a brand name. Numbers identify varieties.

GRAIN & LIVESTOCK HEDGING SERVICES WITH



Jim Rohrbaugh, Account Executive
E.F. Hutton & Company Inc
P.O. Box 3151, Harrisburg, PA 17105
(717) 763-1611
(800) 822-9553 In-state
(800) 334-3119 Out-of-state

AUCTION SPECIAL FEEDER & STOCKER CATTLE

FRI., OCTOBER 23, 1987 7 P.M.

All weights & breeds.
Contact Vintage Sales Stables, Inc.
Paradise, PA

L. Robert Frame, Manager
Office, 717-442-4181
Home, 215-458-8518
Call Anytime.

KING'S AUCTION KIRKWOOD Hay, Straw and Grain Auction EVERY TUESDAY

12:00
Located Rt. 472 5 miles south of Quarryville or 6 miles north of Oxford corner of Rt. 472 and Noble Road at Rouse Tobacco Station.

Lloyd H. Kreider, Auctioneer AU-000512L
No out of state checks ALL TRUCKERS AND FARMERS WELCOME

HAY & STRAW SALE

12:00 Noon
Every Wednesday
Westend of Avondale at the intersection of Baltimore Pike and Route 41.

Harvey Z. Martin
215-268-3604
(Office)
215-445-5303
(Residence)