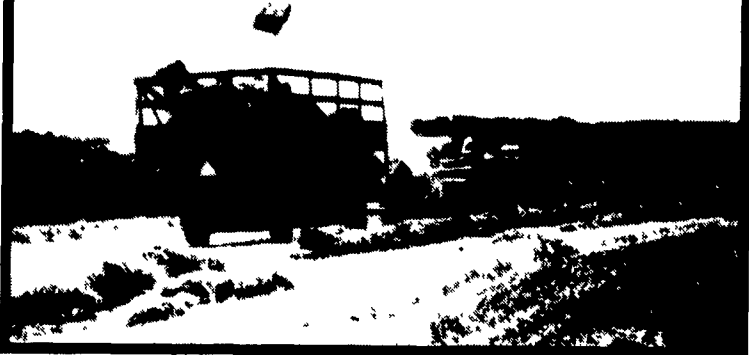


# HAY MARKETS



## Pa. Grain

**Monday, Oct. 5, 1987**  
 Report supplied by PDA  
 COMPARED WITH LAST MONDAY'S MARKET FOR SOUTHEASTERN, CENTRAL AND SOUTH CENTRAL PA: CORN STEADY TO .10 HIGHER; WHEAT AND OATS UNEVEN, MOSTLY STEADY TO .15 HIGHER; BARLEY UNEVEN, MOSTLY STEADY TO .05 HIGHER, SOYBEANS STEADY TO .30 HIGHER, OLD EAR CORN STEADY TO STRONG; NEW EAR CORN LITTLE ON THE MARKET, FEW PRICES REPORTED

**SOUTHEASTERN PENNSYLVANIA**  
 CORN NO. 2-Y RANGE 1.80-2.10, AVERAGE 1.92, @WHEAT NO. 2 RANGE 2.60-3.10, AVERAGE 2.85, \*CONTRACT FOR HARVEST 2.93, BARLEY NO. 3 RANGE 1.30-1.50, AVERAGE 1.39; OATS NO. 2 RANGE 1.50-1.70, FEW REPORTED 1.90, AVERAGE 1.62; SOYBEANS NO. 1 RANGE 5.10-5.40, AVERAGE 5.24; \*GR. SORGHUM #2 \*CONTRACT FOR HARVEST 1.75, AVERAGE 1.75; OLD EAR CORN RANGE 48.00-65.00, AVERAGE 55.25, \*\*NEW EAR CORN RANGE 36.00-39.00, AVERAGE 37.50.

**CENTRAL PENNSYLVANIA**  
 CORN NO. 2-Y RANGE 1.70-2.00, AVERAGE 1.84; @WHEAT NO. 2 RANGE 2.40-2.90, FEW REPORTED 2.25, AVERAGE 2.51, BARLEY NO. 3

RANGE 1.25-1.35, AVERAGE 1.29, OATS NO. 2 RANGE 1.25-1.60, FEW REPORTED 1.10, AVERAGE 1.33, SOYBEANS NO. 1 RANGE 5.00-5.50, AVERAGE 5.31; \*+BUCKWHEAT RANGE 7.75-8.50, AVERAGE 8.13, OLD EAR CORN RANGE 49.00-55.00, AVERAGE 52.20

## SOUTH CENTRAL PENNSYLVANIA

CORN NO. 2-Y RANGE 1.85-2.05, AVERAGE 1.94; @WHEAT NO. 2 2.25-2.75, AVERAGE 2.47; BARLEY NO. 3 RANGE 1.20-1.40, FEW REPORTED 1.55, AVERAGE 1.38; OATS NO. 2 RANGE 1.50-1.70, FEW REPORTED 1.20, AVERAGE 1.52, OLD EAR CORN RANGE 55.00-65.00, AVERAGE 59.44, \*\*NEW EAR CORN RANGE 43.00-50.00, AVERAGE 46.50.

## WESTERN PENNSYLVANIA

CORN NO. 2-Y RANGE 1.53-2.00, AVERAGE 1.79; @WHEAT NO. 2 RANGE 2.30-2.70, AVERAGE 2.49, OATS NO. 2 RANGE 1.25-1.60, AVERAGE 1.42, \*+BUCKWHEAT RANGE 7.75-8.50, AVERAGE 8.08, OLD EAR CORN RANGE 48.00-50.00, AVERAGE 49.33

## SOUTHEASTERN, CENTRAL & SOUTH CENTRAL SUMMARY

CORN NO. 2-Y RANGE 1.80-2.08, AVERAGE 1.89; @WHEAT NO. 2-Y RANGE 2.40-3.05, AVERAGE 2.64; BARLEY NO. 3 RANGE 1.25-1.50,

AVERAGE 1.36, OATS NO. 2 RANGE 1.25-1.70, AVERAGE 1.49; SOYBEANS NO. 1 RANGE 5.10-5.50, AVERAGE 5.27; OLD EAR CORN RANGE 48.00-65.00, AVERAGE 55.48

## MONTH AGO

CORN NO. 2-Y RANGE 1.81; @WHEAT NO. 2-Y RANGE 2.52, BARLEY NO. 3 RANGE 1.31; OATS NO. 2 RANGE 1.36, SOYBEANS NO. 1 RANGE 5.36, OLD EAR CORN RANGE 53.94

## YEAR AGO

CORN NO. 2-Y AVERAGE 1.81, @WHEAT NO. 2-Y AVERAGE 2.45, BARLEY NO. 3 AVERAGE 1.30, OATS NO. 2 AVERAGE .97, SOYBEANS NO. 1 AVERAGE 4.48, EAR CORN AVERAGE 50.79

## Regional Hay

October 5, 1987

Eastern, Pa.

## On-Farm Sales

HAY & STRAW MARKET FOR EASTERN PA. (ALL HAY NO. 2 AND BETTER PRICES PAID BY DEALERS AT THE FARM AND PER TON.) HAY AND STRAW STEADY TO \$5 HIGHER  
 ALFALFA 75.00-110.00; MIXED HAY 65.00-90.00; TIMOTHY HAY 70.00-90.00; STRAW 55.00-75.00, MULCH 20.00-35.00

## LANCASTER CO.

## AUCTIONS

SUMMARY OF LANCASTER CO HAY AUCTIONS FOR WEEK ENDING 9/25/87 PRICES PER TON: LOADS. 103 HAY, 38 STRAW, AND 42 EAR CORN

ALFALFA 86.00-147.00; MIXED HAY 65.00-125.00; TIMOTHY 67.00-150.00; STRAW 78.00-121.00; EAR CORN 60.00-75.00.

## CENTRAL PA. HAY AUCTIONS

SUMMARY OF CENTRAL PA HAY AUCTIONS FOR WEEK ENDING 9/25/87 PRICES PER TON LOADS 53 HAY, 3 STRAW AND 17 EAR CORN  
 ALFALFA 80.00-122.50, MIXED HAY 50.00-105.00, STRAW 52.00-97.50, EAR CORN 57.00-77.50

## Green Dragon Hay

Ephrata, Pa.

Friday, Oct. 2, 1987

Report Supplied by Auction

72 LOADS  
 MIXED HAY, 51 00 140 00, TIMOTHY, 67 00-145 00, ALFALFA, 59 00-129 00, STUBBLE HAY, 72 00-90 00, CORN, 60 00 76 00, STRAW, 69 00-121 00, OATS, 1 60 BU, RYF, 2 60-3 90 BU.

## Belleville Hay

Wednesday, Oct. 7

Belleville, PA

Report Supplied by Auction

20 LOADS  
 ALFALFA, 85 00 112 50, MIXED HAY, 67 50 105 50, 5 LOADS STRAW 77 50 90 00, 6 LOADS EAR CORN, 57 50-67 50

## King's Hay

Kirkwood, Pa.

Tuesday, Oct. 6, 1987

Report supplied by Auction

18 LOADS ALFALFA 60.00-112.00, ALFALFA MIX 95.00-125.00; MIXED HAY 90.00-95.00; TIMOTHY & TIMOTHY MIX 92.00-130.00, GRASS HAY 65.00-120.00; STRAW 96.00 & 111.00; 4 LOADS EAR CORN 57.00-58.00

## Frederick Co. Hay

Buckeystown, Md.

Thursday, Oct. 8, 1986

Report Supplied by Auction

15 LOADS MARKET ABOUT STEADY COMPARED TO LAST WEEK. ALFALFA, 3 FAIR, SOME WITH MOISTURE, 65.00-105.00, ALFALFA WITH GRASS, 65.00; TIMOTHY, 1 GOOD, 130.00, 1 FAIR, 70.00, MIXED HAY, 2 FAIR, 69.00-92.00, 1 GOOD, 122.50.  
 STRAW, 6 FAIR TO GOOD, 85.00-95.00

## Dewart Hay

Dewart, PA.

Monday, Oct. 5, 1987

Report Supplied by Auction

7 LOADS HAY, 57.00-72.00; STRAW, 70.00; 3 LOADS CORN, 56.00-63.00.



## Fast and Accurate Forage Analysis

- \*Forages
- \*Commercial Concentrates
- \*Ingredients

24 hour NIR service, ICP minerals & "Wet Chemistry" methods available. Write or call for complete details

1-800-344-2697 or 1-800-255-5344  
(NY only) (Northeast except NY)

New York DHI Cooperative

730 Warren Road, Ithaca, NY 14850 \* 607/257-1272

## Seeking Profits In Commodities Trading?

- Hedging
- Speculating
- Managed Account
- Commodity Options

Call Forney Longenecker, Commodities Investment Executive, At (717) 295-8914

**SHEARSON LEHMAN BROTHERS**  
 29 E. King St.  
 Lancaster, PA 17603

**SHEARSON LEHMAN BROTHERS**

An American Express Company  
**AMERICAN EXPRESS**

# HERE TO STAY!

## MAKE 1987 THE YEAR TO GET ACQUAINTED WITH NEW HOLLAND SALES STABLES, INC. - THE ACTION AUCTION

### MONDAY

FAT HOGS



### EARLY BIRD HOG SALE

7:30 AM  
 For Your Protection Your Hogs Must Be Identified

### 10:00 AM

HORSES MULES



### 11:00 AM

HAY STRAW GRAIN



1:30 PM BEEF SALE CALF, SHEEP, GOATS



### WEDNESDAY

11:00 A.M.



HEIFERS, BULLS

### NEW HOLLAND SALES STABLES, Inc.

12 Miles East of Lancaster on Route 23, New Holland, Penna

The Action Auction  
 717-354-4341

Mgr - Abe Diffenbach - 717-393-4464  
 Norman Kolb - 717-397-5538  
 Field Representatives  
 Alan Diffenbach 717-656-9806  
 Luke Eberly 215-267-6608 - 738-1865

### WEDNESDAY - 1:30 P.M. FEEDER PIG SALE



We endeavor to keep our barns cleaner than yours. State graded until 12 Noon

### THURSDAY

10:00 AM

BULLS -

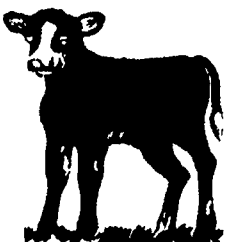


STEERS - BEEF COWS



2:30 P.M.

CALVES



SHEEP GOATS



Market your livestock thru New Holland Sales, your neighbor does  
 Pick-up your check before you leave