

# Dairy and Livestock Sales

## Public Auction Register

THURS OCT 29 - 6PM  
Civil War Sale Collection of  
Kenneth W Conrad Con-  
estoga Auct Co, Inc, Man-  
heim, PA Garystone Rd,  
W of Rt 72, 7 mis N of  
Lancaster, PA

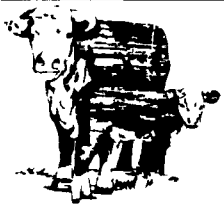
FRI OCT 30 - 1PM 82 Acre  
Farm 17 mis S of Lancas-  
ter at East side of Village  
of Wakefield, with frontage on  
Rt 222 & 272 Samuel E &  
Elizabeth King, Owners  
Difffenbach's Aucts

WED OCT 28 THRU SAT  
OCT 31 - Horse Drawn  
Carriages, Sleighs & Anti-  
ques At Martin's Sales  
Pavilion, 2 mis E of Inter-  
course, on Rt 340, Lanc  
Co, PA Martin

## PIGS

STATE GRADED SALE  
FRI., OCT. 16  
1:30 P.M.

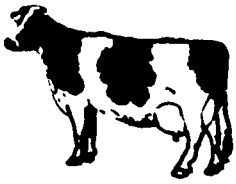
AT  
WESTMINSTER  
LIVESTOCK AUCTION  
Westminster, Md.  
Phone (301) 848-9820



## FEEDER CATTLE SALE

Wednesday,  
Oct. 14th  
7:00 p.m.  
cattle received  
from 8:00 a.m.  
FOUR STATES  
LIVESTOCK  
Hagerstown, Md.  
call (301) 733-8120

## KISH VALLEY DAIRY SALES



Located on the corner of S. Walnut St.  
& Front Mountain Rd., Belleville, PA.  
**COMPLETE HERD DISPERSAL  
FRIDAY, OCT. 23, 1987**

AT 1 P.M.  
—84 HEAD—

For Galen & Dorothy Kenep. Herd con-  
sists of 25 Reg. Cows, 16 Grade Cows, 25  
Reg. Heifers, 18 Grade Heifers which 11 of  
the heifers are bred, the balance are year-  
lings down to calves. Rolling Herd Aver-  
age, 16,915m. 613f. This herd being dis-  
persed, farm being sold  
Sherman Glick,  
Owner & Sale Manager,  
717-935-5195 or 248-0960  
Brian D. Imes, Auctioneer AU-001656-L  
& V. Art Kling Pedigrees  
*Catalogs Available Day Of Sale*

## CONSIGNMENT SALE

OF FEEDER PIGS  
& FEEDER CATTLE

FRIDAY, OCTOBER 16, 1987  
at 6:30 P.M. Sharp

Held at Keister's Middleburg Auction  
Sales, Inc. Rt. 522 3 miles east of Middle-  
burg, PA, 5 miles west of Sellinsgrove,  
PA.

Early consignments accepted  
Bring a load - buy a load  
Owners,

**DON & WALT KEISTER**

For information call  
717-837-2222, 717-966-2856  
or 717-523-0360

Terms: Cash  
Auctioneers:  
Bryan Imes & Ray Long  
Restaurant Open

## PUBLIC SALE

FRIDAY, OCTOBER 30, 1987  
1:00 P.M.

Located 17 miles south of Lancaster at east side of  
Village of Wakefield, Fulton Twp., Lanc. Co., Pa.

### REAL ESTATE

82 Acre farm, more or less. Approximately 65 acres tillable  
balance permanent pasture, with Conowingo Creek passing  
through.

Bank barn with box stalls and horse stable. Attached hip  
barn with room for 39 cows.

Three concrete stave silos 10'x55', 12'x50' and 14'x65'.  
Milk House: Dairy set-up only three years old.

Room to hang 10,000 lath of tobacco, tobacco shed, corn  
barn, implement shed, two bay carriage shed.

Two and one-half story brick house with seven rooms and  
bath. Slate roof.

Lot Of Road Frontage.

Inspection Anytime Except Sundays, Early Possession.  
Sale 1:00 P.M.

**SAMUEL E. & ELIZABETH KING,**  
Owners

Difffenbach's Auct.'s  
Abe 225L Alan 2258L  
Abe Jr. 1104L David 2324L

Ephrata, PA For Fred A &  
Naomi W Brubaker Kline &  
Kreiders Auctioneers  
717-733-1006

SAT OCT 31 - Antiques,  
HH For Francis Nolt along  
East Earl Rd in village of  
East Earl Nevin Martin &  
Lewis Groff, Aucts

SAT OCT 31 - 8 30AM  
Cons Horse Sale at Keis-  
ter's Middleburg Auction  
Sales, Inc, Rt 522, 3 mis  
E of Middleburg, PA, 5 mis  
W of Sellinsgrove, PA Don  
& Walt Keister, Owners

SAT OCT 31 - 9AM Public  
Sale HH Goods, Gun, Farm  
Shed, Tools & Misc Items,  
Chevy Caprice, Antiques  
Located 7 mi south west of

Mt Pleasant Mills, PA Turn  
off Rte 104 at Fuller's Store  
and go toward Oriental at  
covered bridge make a  
sharp right turn, go to first  
road to left, first farm, watch  
for sale signs Owner,  
Kathryn Finkenbinder Auc-  
tioneer Ken Smith

SAT OCT 31 - 9 30AM  
Valuable Real Estate, Anti-  
ques, Personal Property,  
Guns at RD 1, Red Lion,  
PA approx 1 1/4 mi from  
Martinsville and from the  
Burkholder Rd along Snyders  
corner in Lower Windsor  
Twp Estate of Emma E  
Herman Jacob A Gilbert,  
Brian L Gilbert,  
Auctioneers

## PUBLIC AUCTION

TRACTORS, FARM EQUIPMENT  
LAWN & GARDEN

WED., OCTOBER 7, 1987  
9:30 A.M.

COPPAGE IMPLEMENT CO.  
GREAT MILLS, MD 20634

LOCATION: Southeast of Waldorf, MD, 40  
Miles. Take Rt. 5 to Great Mills, MD. From  
Virginia, off US Rt. 301 on MD Rt. 234 East  
to Rt. 5 to Great Mills.

TRACTORS, TRUCKS, LAWN & GARDEN  
Deutz-Allis 5230 (31 HP) Tractor w/Turf Tires  
(new); Deutz-Allis 5220 (26 HP) Tractor w/  
Turf Tires (new); International B-275 Tractor;  
1977 Ford F-100 Pick-up Truck; 1974 Ford  
F-100 Truck w/Utility Body; Woods Model  
1850 Mow-N-Machine w/42" Mower (new);  
ACT811 Tractor w/42" Mower (new); AC 608  
LTD Tractor w/36" Mower (new); 2-Billy  
Goat Mod. AD 50T Vacuums (new); Int. Cub  
Cadet 1250 Hydro LGT w/Mower and Blade;  
AC B-10 LGT w/Mower.

Deutz-Allis RM-60 Rotary Mower, Deutz-  
Allis RM72 Rotary, AC Mod. 63 Rotary Mow-  
er, Woods RM-306 Rotary, Yazoo-Harry 22"  
Push Mower, 2 Yazoo Trimmers, MTD 4 HP  
SP 22" Mower, 2 AC Rear Mtd. Tillers for 900  
and 800 Series, York 4' RM Landscape Box, 2  
Woods 3RB5 Blades, Tractor Weights.

### NEW & USED FARM EQUIPMENT

Allis Chalmers Mod. 2315 Fold-up Disk Har-  
row, Allis Chalmers 2500 Series 10'10" Disc  
Harrow, AC 2000 Series 5B Plow, AC Model  
42 3 Pt. 2B Plow, AC 73 3B Plow, AC 8' 3 Pt.  
Chisel Plow, AC Mod. 101 Rolling Cultivator,  
AC 4 Row Cultivator, Sovena Mod. L120 Till-  
er, Long 4B Reducible Plow, Ferg. 3 Pt. 4 Sec-  
tion Harrow, Long Mod. 953 3 Pt. Disk, Lillis-  
ton 4R Cutlivator, AC Series 2000 6B Plow,  
AC 1 and 2B S-C Plows, MF 3 Pt. 8' Disk.  
3 Allis Chalmers 333 Notil Planters, AC 330  
Planter, AC 74 Series Planting Units, AC 300  
Series 3 Pt. 2 Row Notil Planter Frames, Cole  
4R Corn Planter, Holland 1600 Series Tobacco  
Planter, 4 Star Tobacco Cutter, Gandy Mod.  
1011A 10' Spreader, Gandy Mod. 10085 8'  
Spreader, AC Fertilizer Fill System (4 Row),  
Young Spinner Spreader, AC Granular Herbi-  
cide Applicator, 2- Holland Pull-Type Tobacco  
Planter Frames, Gehl Model 100 Grinder Mix-  
er, 3 Pt. Super Pan Mod. SP600, Herd Mod.  
750 3 Pt. Spreader, Sunoco Seed Cleaner w/2  
Screens, New Idea 2 Row Picker/Sheller, AC  
Gleaner E Combine w/12' Head (for parts),  
Hart Cart 13' Floating Cutter Bar (fits E and  
K).

TERMS: CASH OR GOOD CHECK  
FULL SETTLEMENT SALE DAY

AUCTIONEER'S NOTE: In order to settle the  
family estate, Coppage Equipment must liquid-  
ate this equipment, much of which is new and  
will be sold with warranty. Some items subject  
to prior sale. Will also be selling some new  
parts and shop tools.

SALE CONDUCTED FOR:  
**COPPAGE IMPLEMENT CO.**  
Great Mills, MD 20634  
(301) 994-9892

AUCTIONEER:  
Blaine N. Rentzel  
Emigsville, PA  
(717) 764-6412  
PA Lic. #761-L

## PUBLIC SALE

JUNIATA CO. REAL ESTATE  
SAT., NOV. 7 — 1:00 P.M.

Located in village of Locust Run, along old  
Rt. 22, approx. 7 mi. east of Mifflintown and  
2 mi. west of Thompsontown.

1 1/2 sty, 6 room frame dwelling w/alum. siding.  
Good cond. well water, on lot septic. OHW  
heat, 1 car garage, lg. lot 70x228. Nice loca-  
tion, beautiful view.

Owners:  
**MAYNARD & CLARA FINICLE**

For more info or brochure, contact:  
**LONG'S AUCTION SERVICE**  
Ph. 717-527-2405 or 4458  
AU 001702 L

## PUBLIC AUCTION

ANTIQUES, HOUSEHOLD GOODS,  
TOOLS, TRACTORS & EQUIPMENT  
MONDAY, OCT. 12, 1987

12:00 NOON  
NORTH OF HELLAM, PA

Located: Off Rt. 30 at Hellam Exit, go North  
1/2 Mile to Tracy School Road, continue  
straight to first hard road on left - Chimney  
Rock Road, go to first lane on left. Watch  
for Signs.

Oak Side Board, Kerosene Lights, Butter  
Scales w/Platform (double weight), Blanket  
Chest, Cane Chairs, Picture Frames, Small  
Chest, 6 Plank Bottom Chairs, Living Room  
Suit (2 chairs and sofa - wood frame), Wooden  
Stack Stands, Chunk and Coal Stove, End  
Tables, Coffee Grinder Light, Old Table Set  
(spooner, butter, sugar and creamer), Butcher  
Ladles, Cast Grill, Butter Dish, Celery Dish,  
Other Glassware, Desk, Pewter Match Holder,  
Porcelain Tea Kettle, Breakfast and 6 Chairs,  
Blonde Bedroom Suit, Maple Dresser, Gun  
Case, Baskets, Books, Metal Cabinet, Table  
Tops, Kitchen Cupboard Top, Kettle Stove,  
Iron Kettles, Meat Hooks, Crocks, Pump  
Trough and Pump, 19" Rotary Mower, 13 Cu.  
Ft. Chest Freezer, Screen House, Braided  
Rugs, Cast Iron Cookware, School Desk,  
Clothes Tree, Ukulele, Mandolin, Guitar,  
Microwave Oven, Child's Wooden Blocks,  
Etc.

Ford 8N Tractor in good condition, Dearborn 7  
Ft. 3 Pt. Sickle Mower, Ford Major Diesel  
Back and Loader, 24 Blade Pull Disk, 3 Pt. Fer-  
guson Hay Rake, Cultipacker, 3 Pt. Cultivator,  
J.D. 3 Pt. 2x Plow, J.D. 6 Ft. 3 Pt. Scraper  
Blade, Woods C80 Pull-Type Rotary Mower,  
Tilt-Top Equipment Trailer w/Electric Brakes,  
Int. 45 PTO Baler, John Deere Wagon w/Bed  
and Sides, Case C.C. Tractor, Manure Spreader  
4 Wheel, D.B. Garden Tractor, Attachment for  
D.B. Sickle Mower, Plow, Rototiller, Myers  
Snow Plow, Brinley Garden Cultivator, Snow  
Plow for Wheel Horse, Hand Corn Sheller,  
Weed Burners, 3500 Watt Generator- Home-  
lite, Int. Pick-up (52?), 1968 Volvo Automob-  
ile, 1965 Ford F500 Tow Truck, GMC Dump  
Truck- 21,000 GVW, year- mid 50?, Wheel  
Balancer, Big 4 Tire Machine, Oil Drainer,  
Waste Oil Furnace, Sand Blasting Cabinet,  
Jack Stands, Tires, New 2" Water Pump, Misc.  
Pipe and Iron, Metal Parts Cabinet, Hot Water  
Heater - electric, Metal Frame Dollies, Drums,  
Peg Board, New Wash Bowl and Commode,  
36' Double Ladder, Turf Builder, Boat Anchor,  
Chicken Crates, 10x10 Fiberglass Overhead  
Door, Fence Post, Air Compressor, Turkey  
Wire, and Many More Items!

TERMS: CASH OR GOOD CHECK

SALE FOR:  
**MR. & MRS. CLYDE  
BRENNEMAN**  
757-6092

AUCTIONEER:  
Blaine N. Rentzel  
Emigsville, PA  
(717) 764-6412  
PA Lic. #761