

Produce Markets

Philadelphia Vegetables

Wednesday, October 7, 1987

BEANS ABOUT STEADY various bushel containers Round Green type unless otherwise stated NJ 10.00-12.00 VA 11.00-12.00 mostly 12.00 MD 12.00 SC few 15.00*.

BROCCOLI ABOUT STEADY carton bunched CA 14s 10.00-10.50 18s 10.50 one label 11.50 NJ 12s 550*.

CABBAGE ABOUT STEADY 1-3/4 bushel crate & carton medium green unless otherwise stated NJ 550-600 medium-large 500-600 mostly 500 large 4-450 Savoy type 700 WI Red 650 PA medium-large 500-600 mostly 500 CANADA 7-750 Savoy type 800 Red 700-800 mostly 750 50-lb sacks NY large 4-450*.

CARROTS ABOUT STEADY 48-1 lb film bags in film sacks CA medium-large 900-10.00 mostly 9-950 WI medium 800 OH & CANADA medium 700 50-lb sacks loose jumbo CA 500-600 one label high as 800 OH & few CANADA 600*.

CAULIFLOWER CA LOWER, OTHERS ABOUT STEADY carton film wrapped CA 9s few 900 12s 800-950 jacket pack LI Long Island crate 12s 11.00-12.00*.

CELERY ABOUT STEADY carton CA 2 dozen 800-10.00 mostly 900 2-1/2 dozen 850-10.00 mostly 850-950 MI 2-2-1/2 dozen 700-800 3-4 dozen 500-600 OH 2-2-1/2 dozen 800*.

CHINESE CABBAGE OH celery crate 600-800 CA Nappa 50-lb carton 12.00*.

CORN ABOUT STEADY wire bound crate approximately 4-1/2 dozen NJ White fair quality 500-700 NY White fair quality 600*.

CUCUMBERS ABOUT STEADY 1-1/9 bushel crate & carton waxed medium unless otherwise stated MD 12.00 fair quality 800-900 VA small 800 GA fair appearance 11.00*.

EGGPLANT ABOUT STEADY NJ 1-1/9 bushel crate & carton 800-10.00 CA carton 18s few 900-10.00*.

ENDIVE ABOUT STEADY NJ 1-1/9 bushel crate few 700 OH 1-1/9 bushel crate 500-600 mostly 600 CA carton 24s 12.50*.

ESCAROLE ABOUT STEADY NJ 1-1/9 bushel crate few 700 OH 1-1/9 bushel crate 500-600 CA carton 24s 11.50*.

GREENS ABOUT STEADY crate approximately 1-1/2 bushel bunched unless otherwise stated PA Collards, Mustard, Turnip Tops, Kale & Rape 600 NJ Collards, Mustard & Turnip Tops 550-650 mostly 600 Rape & Kale 6-650 mostly 600 OH Kale 6-650 mostly 600*.

LEEKES ABOUT STEADY bunched 12s NJ crate 900-10.00 mostly 900 CA carton 11.00*.

LETTUCE-ICEBERG SLIGHTLY HIGHER carton 24s unless otherwise stated CA 11.00-13.00 some 13.50 film wrapped 11.00-12.00 NJ 600-700 mostly 6-650*.

LETTUCE-ROMAINE ABOUT STEADY CA 24s carton 13.00-16.00 crate 17.00-18.00 mostly 17.00 OH crate 24s 600 NJ crate 24s 600-700 CANADA carton 24s 750*.

LETTUCE-OTHERS Big Boston CA carton 24s 11.00 OH crate 24s 6-650 Bibb OH basket few 700 NJ small crate 500-600 Leaf CA carton 24s 10.00-11.50 Red 11.50-12.00*.

LETTUCE-PROCESSING No supplies*.

OKRA Supplies insufficient to quote*.

ONIONS-GREEN ABOUT STEADY crate bunched 36s NJ 650-700 carton bunched 48s CA 750-875 mostly 800 OH 700-800 MI 700*.

PARSLEY ABOUT STEADY bunched 5 dozen curly unless otherwise stated OH crate & carton 700-900 mostly 800 Plain 800-900 mostly 800 NJ bushel basket 800-10.00 CA carton 11.00-12.00*.

PEAS-GREEN Supplies insufficient to quote*.

PEAS-SOUTHERN Supplies insufficient to quote*.

PEAS-SUGAR 10-lb carton per lb CA 170-180 GUATEMALA 170-180*.

PEPPERS SLIGHTLY HIGHER 1-1/9 bushel crate & carton California Wonder type green unless otherwise NJ medium-large 800 Long Hots 1/2 bushel carton few 12.00 PA large fair quality 750 OH Mixed Red large 650-700 Red small 900-10.00 CA extra large 13.00-13.50 large 11.00-12.00 Red large 20.

RADISHES STEADY carton Red 30-6 oz film bags unless otherwise stated OH 450-500 bunched 24s 600 CA bunched 24s 650*.

SPINACH ABOUT STEADY Savoy type NJ bushel basket 600-700 1-1/4 bushel crate 500-600 PA 1-1/4 bushel crate 500 Flat type CA carton bunched 24s 11.00*.

SQUASH ABOUT STEADY NJ 1/2 bushel carton Zucchini small-medium 700 Yellow Straightneck small-medium few 700-800 medium 500 1-1/9 bushel crate Acorn & Butternut 800 Spaghetti type 12.00 NC 5/9 bushel carton Zucchini small-medium 800 VA 1/2 bushel carton Zucchini medium 400-500 Yellow Straightneck small-medium few 800 CA 26-lb carton Zucchini small 700-800 small-medium 600-700 medium 500-600*.

SUB TROPICAL VEGETABLES 50-lb carton unless otherwise stated APIO PUERTO RICO 35-lb carton 27.00 BATATAS FL 20.00 CALABAZAS NJ 10.00 CHAYOTE COSTA RICA 20-lb flat carton 11.00 CILANTRILLO NJ 12-lb carton

800 CULANTRO PUERTO RICO 40-lb carton 35.00 GUANABANA No supplies GUAVA FL 10-lb carton 900 MALANGA PUERTO RICO 27.00 MALANGA COCO DOMINICAN REPUBLIC 20.00 PANAPEN No supplies PLANTAINS COLOMBIA, COSTA RICA & ECUADOR 14.50 YAMS BRAZIL 28.00 JAMAICA 34.00 YAUTIA DOMINICAN REPUBLIC 34.00 YUCCA DOMINICAN REPUBLIC 21.50*.

SWEET POTATOES ABOUT STEADY NJ no grade mark 1/2 bushel carton Yellow Jersey 800-900 mostly 900 fair quality 500 Red Jersey 11.00-12.00 fair quality 600-700 NC 50-lb carton Jewel type 900-10.00 LA 50-lb carton Porto Rican type 10.00 large 800*.

TOMATOES ABOUT STEADY 25-lb carton Pink to light Red US Combination grade or better unless otherwise stated Sales by Repackers CA 5x6s 11.50 6x6s 10.00 Sales by Others CA 5x6s one lot 12.00 6x6s one lot 10.00 fair quality 5x6s 850-950 6x6s 700-800 Cherry type 12-1 pt flat CA 900-11.00 MEXICO 10.00-11.00*.

TURNIPS TOPPED 25-lb mesh sacks PA 800 NJ 700*

Shippensburg Produce Auction

(717) 530-1700

Shippensburg, PA

Oct. 1, 3 & 6

Report Supplied by Auction

APPLES 2 00 3 75 1/2 BU
BROCCOLI 2 50-5 00 BU
CABBAGE 2 00-2 75 50# BOX
CANTALOPES 56-65 EA
CAULIFLOWER 90 1 35 EA
CUCUMBERS 2 75-4 25 1/2 BU
GOURDS 3 50-5 25 1/2 BU
INDIAN CORN 60-1 00 BUNCH,
MINI 50-90 BUNCH
LIMA BEANS 4 75-7 50 1/2 BU.
MUMS 40-1 70 EA
PEACHES 1 25-2 00 1/2 BU
PEARS 3 50-5 00 1/2 BU
PEPPERS (LG) 4 50-10 00 1 1/9 BU.,
(MD) 3 00-5 55 1 1/9 BU
PLUMS 1 50 1 75 1/2 BU
POTATOES 3 50-6 75 50 LB
PUMPKINS FACE .03% -.06 1/2 LB.,
FACE .50-2.80 EA.; JUMBO FACE
2 50-8 50 EA.; MINI 3 50-7 75 1/2 BU.,
NECK 65-1 75 EA.
RED BEETS 4 25-5 25 1/2 BU
SQUASH 1 75-2 50 1/2 BU.
STRING BEANS 3 75-10 00 1/2 BU
SWEET POTATOES 4 75-5 25 1/2 BU
TOMATOES LG. 7 00-14 50 25 LBS.,
MD 5 50-8 25 25 LBS
ZUCCHINI 3 00-5 75 1/2 BU

Buffalo Produce Auction

Mifflinburg R3

Oct. 2, 6, & 8

Report Supplied by Auction

All prices listed are Grade 1

ACORN SQUASH: 1.50-3.25 BU.
APPLES: RED DELICIOUS 4.50-6.50 BU;
SMOKEHOUSE 3.00-4.50 BU;
NORTHERN SPY 4.00-5.25 BU;
ROME BEAUTY, FEW 5.00 BU.; WINESAP, VEW 6.00 BU
BROCCOLI 3.00-6.50 BOX, MOSTLY 14-16 HD CT
CABBAGE 3.75-5.50 50# BAG
CAULIFLOWER: .36-1.00 HD
CIDER. 1.00-1.15 GAL, FEW 75-80 1/2 GAL
GOURDS 2.75-6.00 1/2 BU
INDIAN CORN: .30-65 BUNCH,
MINI 50-70 BUNCH
ONIONS 6.25-9.50 50# BAG.
PEACHES FEW 3.00-4.25 1/2 BU
PEPPERS FEW 3.25-4.00 BU
POTATOES 4.00-5.00 50# BAG; 2.80 30# BAG.
PUMPKINS (NECK) .20-80 EA;
(FACE) 65-1.00 EA.; (MINI) 2.50-4.50 1/2 BU
SQUASH. (BUTTERNUT) 1.00-2.00 BU;
(BUTTERCUP) 1.00-4.00 BU.
STRING BEANS (GREEN) 4.25-5.00 1/2 BU.
TOMATOES MD 3.25-8.25 25# BOX,
LG 6.25-12.75 25# BOX
TURNIPS 3.00-5.00 1/2 BU.
WATERMELON CRIMSON 1.00-1.15 EA

Leola Produce Auction

Leola, PA

Tuesday, Oct. 6, 1987

Report Supplied by Auction

ACORN SQUASH: 3.00 6.00 1 1/9 BU
APPLES: 4.00-8.00 BU. RED, YELLOW DELICIOUS
BROCCOLI: 4.50-8.00, 12'S-14'S.
CABBAGE 25-47 HD, 4.50-7.00 50# CRATE
CAULIFLOWER: 40-82 HD
CIDER 85-1.20 GAL
CORN. 80-1.70 DOZ (WHITE)
CUCUMBERS: 4.75-8.25 1 1/9 BU
EGGPLANT: 4.25-6.00 1 1/9 BU
GOURDS: 3.75-5.00 1/2 BU.
INDIAN CORN 60-95 BUNCH (LG), (MINI) 40-55 BUNCH.
LIMA BEANS: 10.00-14.00 1 1/9 BU
MUMS .85-1.50 POT
PEPPERS: 3.00-10.00 1 1/9 BU.
POTATOES: 4.50-5.75 50#, #1; 80-1.10 10#, #1.

PUMPKINS: (FACE-SM.-MD.) .30-80 EA; LG. .85-1.80 EA. (NECK) .40-90 EA; (MINI) 4.00-7.00 1/2 BU.
RADISHES: 3.75-4.25 BUNCH 20 CT.
RED BEETS. 4.00-6.00 BUNCH 15 CT.
SPINACH 3.50-5.00 1 1/9 BU.
SQUASH. (BUTTERNUT) 2.75-4.50 1 1/9 BU.
STRING BEANS: GREEN 8.00-16.00 1 1/9 BU.
SWEET POTATOES: 6.50-8.00 1 1/9 BU.
TOMATOES. 3.00-8.00 25# SM-MD, 8.00-16.00 25# LG.
TURNIPS: 4.00-8.00 BU.
ZUCCHINI: 4.50-8.00 1/2 BU.

ACRES

(Continued from Page A3)

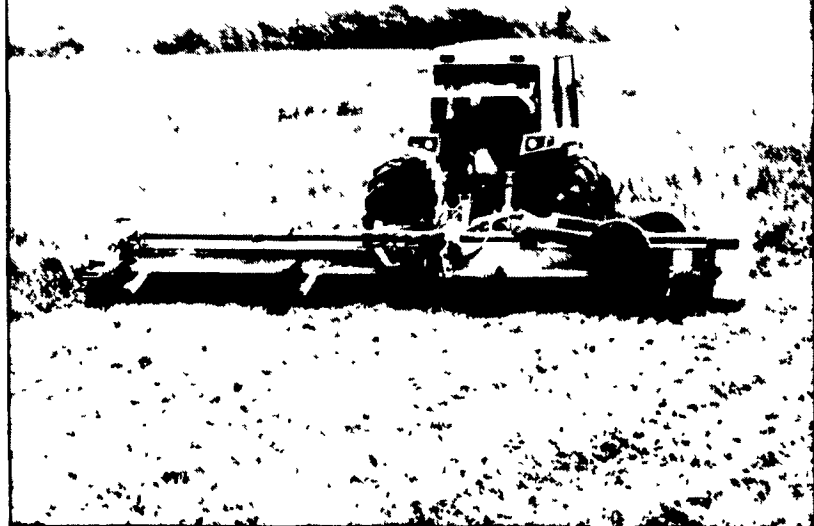
with the quality of U.S. wheat and on a lack of fresh export news. Japan's rejection of U.S. wheat offers pressured prices along with the failure of China and Iraq to announce purchase intentions.

ACRES CATTLE UPDATE: Live cattle and feeder cattle futures closed lower this afternoon but off daily lows as prices were lifted near the close on a short-covering rally. Uncertainty on the floor about the market's fundamental health, rumors of light boxed beef movement and concern over retail beef demand added up to plunge prices early in the day. Ideas began to filter that the market was approaching oversold conditions and a technical correction commenced near the close.

ACRES HOG UPDATE: Live hog futures closed mixed today with the front months pressured by weakening cash fundamentals and he unwinding of forward spreads. Ideas of increased interior movement along with lighter packer demand combined to drop prices lower on the opening. Mixed mid-day pork values also created some uncertainty while the deferreds were bolstered by buying linked to the liquidation of long cattle/short hog spreads.



BEST SET ASIDE MOWER & STALK SHREDDER BUILT!



- Wide Suction Knives - Cut, Lift & Shred Better
- Outlasts Any Other Cutter
- Mow Shred Faster At Less Cost
- Lifetime Knife Warranty Against Breakage
- Models in 12', 15', 20', & 30' Cutting Widths
- One Investment Multiple Use.

New Dealerships available in some areas
Call

Michael Maust, Territory Manager
Carlisle, PA
717/245-0552

Mathews Company / P O Box 70, Crystal Lake, IL 60014 815/459 2210

BREWERS WET GRAIN



A high quality feed ingredient for dairy and beef cattle available from

Anheuser-Busch Inc., Newark, N.J.

- Excellent source of protein, energy and fiber
- Year around availability
- Brewery pickup or local delivery available

For additional information call
Mr. John Ruhnke at (201) 589-4905