

Produce Markets

Leola Produce Auction

Leola, PA

Tuesday, Sept. 29, 1987

Report Supplied by Auction

APPLES: 4.00-6.00 1 1/9 BU
 APPLES: 4.00-8.00 BU RED, YELLOW DELICIOUS.
 BROCCOLI: 3.50-7.50, MOSTLY 14'S.
 CABBAGE: .32-.49 HD, 4.50-10.00 50# CRATE
 CAULIFLOWER: .50-.81 HD
 CORN: .55-1.35 DOZ.
 CUCUMBERS: 4.50-9.50 1 1/9 BU
 EGGPLANT: 3.00-5.00 1 1/9 BU
 GOURDS: 6.00-12.00 BU.
 INDIAN CORN: .50-.75 BUNCH (MINI); 45-.80 BUNCH (LG.)
 LIMA BEANS: 16.00-20.00 1 1/9 BU.
 MUMS: .70-1.70 EA
 PEACHES: 2.00-4.40 1/4 BU.
 PICKLES: 4.00-7.50 1/4 BU.
 PEPPERS: 2.50-8.25 1 1/9 BU.
 POTATOES: 4.75-5.30 50#, #1; 75-.95 10#, #1.
 PUMPKINS: (FACE) 1.00-1.75 LG; (FACE) .35-.90 SM.-MED.; (NECK) .35-.90 EA.; (MINI) 4.00-6.50 1/4 BU
 RADISHES: 4.00-5.00 20 CT.
 RED BEETS: 3.50-5.00 15 CT.
 SQUASH: (BUTTERNUT) 3.50-5.00 1 1/9 BU.
 STRING BEANS: GREEN 8.00-20.00 1 1/9 BU.; (YELLOW) 8.00-17.00 1 1/9 BU.
 SWEET POTATOES: 7.00-10.00 1 1/9 BU.
 TOMATOES: (CHERRY) 6.00-8.00 12 PT. FLAT; 10.00-20.00 LG., 25#; 4.00-9.00, SM.-MED., 25#.
 TURNIPS: 2.75-4.50 1/4 BU.
 ZUCCHINI: 8.00-12.00 1/4 BU.
 *NO MORE WED. SALES THIS YEAR.

Shippensburg Produce Auction

(717) 530-1700

Shippensburg, PA

Sept. 24, 26, and 29

Report Supplied by Auction

APPLES RED, YELLOW DELICIOUS 2.50-3.25 1/4 BU.; RAMBO, MACINTOSH, SMOKEHOUSE 2.75-3.50 1/4 BU.; STAYMAN, ROME, JONATHON 2.00-2.75 1/4 BU.
 CABBAGE 4.75-5.50 50# BOX.

CANTALOPES .10-.45 EA
 CAULIFLOWER .18-.99 HD
 CIDER 85-1.50 GAL.
 CORN 55-.75 DOZ
 CUCUMBERS 3.50-6.00 1/4 BU
 GOURDS 2.50-4.25 1/4 BU.
 GRAPES: (CONCORD) 4.00 5.50 1/4 BU.
 INDIAN CORN 45-.85 BUNCH, MINI 65-1.05 BUNCH.
 LIMA BEANS 4.50-9.25 1/4 BU.
 MUMS 75-1.80 EA.
 PEACHES 2.50-5.00 1/4 BU
 PEARS RED BARTLETT 2.00-3.00 1/4 BU.; YELLOW BARTLETT 2.50-3.25 1/4 BU.; STARK BARTLETT 2.00-3.00 1/4 BU.; SICKLE 1.00-1.50 1/4 BU.; BOSCH 2.00-3.75 1/4 BU.
 PEPPERS (LG) 4.50-8.50 1 1/9 BU., (MD) 3.50-7.25 1 1/9 BU.
 POTATOES 3.25-4.75 50 LB., 1.00-1.25 10 LB
 PUMPKINS FACE .035-.055 LB., JUMBOFACE 2.00-5.00 EA., MINI 5.00-6.25 1/4 BU., NECK .45-1.25 EA
 SQUASH 1.75-2.00 1/4 BU.
 STRING BEANS 4.50-8.00 1/4 BU
 SWEET POTATOES 4.00-5.50 1/4 BU
 TOMATOES LG. 8.50-17.75 25 LBS.; MD. 5.25-15.00 25 LBS.
 WATERMELON SM. .25-.55 EA
 ZUCCHINI 7.50-8.50 1/4 BU.

Buffalo Produce Auction

Mifflinburg R3

Sept. 25, 29 & Oct. 1

Report Supplied by Auction

All prices listed are Grade 1
 ACORN SQUASH: 3.00-3.25 BU.
 APPLES: RED DELICIOUS 4.75-12.00 BU.; SMOKEHOUSE 5.00-5.75 BU.; EMPIRE, FEW 5.50 BU.; NORTHERN SPY FEW AT 4.50 BU., YELLOW DELICIOUS FEW 3.00-3.50 BU.
 BROCCOLI: 3.00-6.25 BU., 14-18 CT.
 CABBAGE: 5.00-6.00 50# BAG.
 CAULIFLOWER: 5.00-5.25 BOX, .45-.60 EA.
 CORN: .65-.85 DOZ.
 GOURDS: 1.75-4.75 1/4 BU.
 INDIAN CORN: .65-.75 BUNCH; MINI .79-.90 BUNCH.
 ONIONS 7.00-10.00 50# BAG.
 PEACHES: 3.75-7.00 1/4 BU.
 PEPPERS: (RED) 5.00-6.00 BU.; MD. 2.00-3.00 BU.; LG. 4.00-7.00 BU.

POTATOES: 3.00-4.75 50# BAG; FEW 20# 1.20.
 PUMPKINS: (NECK) .45-.55 EA.; (FACE) .28-.45 EA., (MINI) 4.00-4.85 1/4 BU.
 RED BEETS. 4.00-7.50 BU.
 SQUASH: (BUTTERNUT) 3.25-3.75 BU.
 STRING BEANS: (GREEN) 9.00-11.00 BU.
 TOMATOES: MD. 4.50-9.00 25# BOX, LG. 6.25-12.50 25# BOX.
 TURNIPS: 3.50-5.00 1/4 BU.
 WATERMELON: FEW CRIMSON 1.00 EA; SEEDLESS FEW .90 EA.

Phila. Vegetables

Wednesday, Sept. 30, 1987

BEANS LOWER various bushel containers Round Green type unless otherwise stated NJ 10.00-12.00 CANADA 10.00-12.00 Lima type NJ few 14.00-15.00 Fava type CA 18.00*.
 BROCCOLI LOWER carton bunched CA 14s 9-950 18s 950 one label 11.00*
 CABBAGE ABOUT STEADY 1-3/4 bushel crate & carton medium green unless otherwise stated NJ 450-500 Red 750 Savoy type 750-800 PA 500-600 WI Red 650 CANADA Savoy type 900 Red 800*.
 CARROTS ABOUT STEADY 48-1 lb film bags in film sacks CA medium-large 900-10.
 Mostly 9-950 MI small-medium 650 CANADA medium 7-750 50-lb sacks loose jumbo CA 600-800 WI & OH 600 MI & CANADA 550-600*.
 CAULIFLOWER LOWER carton film wrapped CA 9s 650-750 12s 700-900 16s 500-600 jacket pack LI Long Island crate 12s 850-10.00 CANADA large carton 16s 500-600*.
 CELERY SLIGHTLY LOWER carton CA 1-1/2 dozen 800-900 mostly 800 2-2-1/2 dozen 800-10.00 mostly 900 3 dozen 700-900 OH & CANADA 2-2-1/2 dozen 800*.
 CHINESE CABBAGE CA Nappa 40-lb carton 10.00 50-lb carton 11.00-12.00 mostly 12.00 OH celery crate 700 Nappa 800 NJ celery crate 550*.
 CORN ABOUT STEADY wire bound crate approximately 4-1/2 dozen NJ White 500-700 mostly 600 PA White 700 DE Yellow 400-600 NY Yellow 400-500 White 600-700 GA Yellow 750*.
 CUCUMBERS ABOUT STEADY 1-1/9 bushel crate & carton waxed medium unless otherwise stated NY 900 fair quality 500 VA fair quality few 700 NJ fair quality few 600*.

EGGPLANT SUPPLIES LIGHT NJ 1-1/9 bushel crate & carton 10.00-12.00*
 ENDIVE ABOUT STEADY NJ 1-1/9 bushel crate 650-700 OH 1-1/9 bushel crate 600-700 NY 1-1/9 bushel crate 600 CA carton 24s 10.00-11.00 mostly 11.00
 ESCAROLE ABOUT STEADY NJ 1-1/9 bushel crate 700 OH 1-1/9 bushel crate 600-700 CA carton 24s 10.00-11.00 mostly 11.00*.

GREENS ABOUT STEADY crate approximately 1-1/2 bushel bunched unless otherwise stated PA Collards, Mustard, Turnip Tops & Rape 600 Kale 650 NJ Collards & Turnip Tops 6-650 mostly 600 Mustard, Kale & Rape m250 OH Kale 6-650 CA 20-lb carton Broccoli Rabe loose one label 21.00-22.00*.

LEEEKS ABOUT STEADY bunched 12s NJ crate 10.00 CA carton 10.50-11.00*.
 LETTUCE-ICEBERG SLIGHTLY LOWER carton 24s unless otherwise stated CA 900-11.00 mostly 10.00-11.00 film wrapped 11.00-12.00 30s 800-900 NJ 500*.

LETTUCE-ROMAINE ABOUT STEADY CA 24s carton 15.00-17.00 mostly 16.00 crate 17.00-18.00 mostly 18.00 OH crate 24s 800-900 CANADA carton 24s 800-900*.

LETTUCE-OTHERS Big Boston CA carton 24s 950-11.00 Bibb OH basket 24s 500-600 Leaf CA carton 24s 11.00-12.50 Red 11.00-12.00 mostly 12.00 OH crate 24s Red 700-800 NJ crate 24s 700-800*.
 LETTUCE-PROCESSING No supplies*.

OKRA Supplies insufficient to quote*
 ONIONS-GREEN ABOUT STEADY crate bunched 36s NJ 650-700 carton bunched 48s CA 8-850 OH 700-800 MI 700*.

PARSLEY ABOUT STEADY bunched 5 dozen curly unless otherwise stated OH crate & carton 700-900 mostly 800 NJ bushel basket 900-10.00 CA carton 12.00*.

PEAS-GREEN CA bushel crate 20.00*.
 PEAS-SOUTHERN Supplies insufficient to quote*.
 PEAS-SUGAR 10-lb carton per lb CA 155-170 GUATEMALA 180*.

PEPPERS 1-1/9 bushel crate & carton California Wonder type green unless otherwise CA extra large 11.00-12.00 large 10.00-12.00 medium 9-950 small-medium 750-800 NJ large 800-900 medium-large 700 medium 600-700 small 500-600 mostly 500 Cubanelle medium-large 10.00 small-medium few 700 Long Hots bushel basket few 25.00 PA large fair quality 700

Mixed Red medium 400 Red medium-large 12.00 CA Red large 25.00*

RADISHES ABOUT STEADY carton Red 30-6 oz film bags unless otherwise stated OH 450-550 mostly 500 bunched 24s 550-650*.

SPINACH ABOUT STEADY Savoy type PA 1-1/4 bushel crate few 600 NJ bushel basket clipped 800 Flat type CA carton bunched 24s 10.00-11.00*.

SQUASH LOWER NJ 1/2 bushel carton Zucchini small-medium 500-600 Yellow Straightneck medium 400-500 VA 1/2 bushel carton Zucchini small-medium 500-600*.

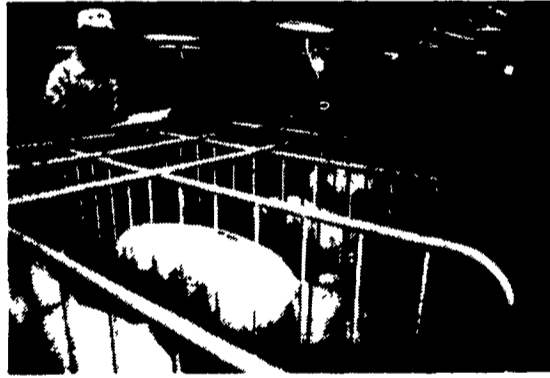
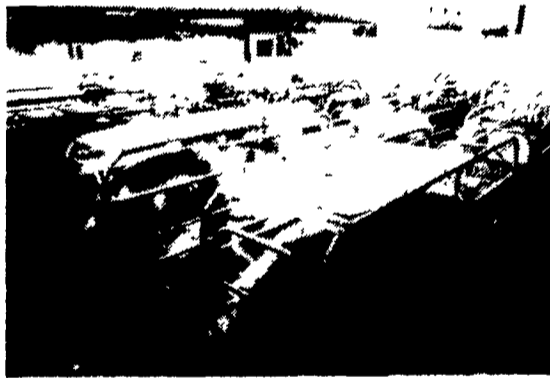
SUB TROPICAL VEGETABLES 50-lb carton unless otherwise stated APIO PUERTO RICO 35-lb carton 27.00 BATA-TAS FL 18.50 CALABAZAS NJ 12.00 CHAYOTE COSTA RICA 20-lb flat carton 11.00 CILANTRILLO NJ 12-lb carton 12.00 CULANTRO PUERTO RICO 40-lb carton 35.00 GUANABANA No supplies GUAVA FL 10-lb carton 900 MALANGA PUERTO RICO 27.00 MALANGA COCO DOMINICAN REPUBLIC 20.00 PANAPEN No supplies PLANTAINS COLOMBIA, COSTA RICA & ECUADOR 15.50 YAMS BRAZIL & DOMINICAN REPUBLIC 32.00 JAMAICA 34.00 YAUTIA DOMINICAN REPUBLIC 35.00 YUCCA DOMINICAN REPUBLIC 21.50*.

SWEET POTATOES ABOUT STEADY NJ no grade mark 1/2 bushel carton Yellow Jersey 900-10.00 fair quality 500-600 Red Jersey 11.00-12.00 fair quality 500-600 NC 50-lb carton Jewel type 10.00*.

TOMATOES ABOUT STEADY 25-lb carton Pink to light Red US Combination grade or better unless otherwise stated Sales by Repackers CA 5x6s 11.50 6x6s 10.00 Sales by Others CA 5x6s 9-950 6x6s 750-800 6x7s 6-650 fair quality 5x6s 800-900 6x6s 600-700 PA large fair quality 400-600 medium fair quality 300 NJ fair quality large 400-500 medium 300 Cherry type 12-1 pt flat CA 12.00*.

TURNIPS Topped PA 25-lb mesh sacks medium few 700*.

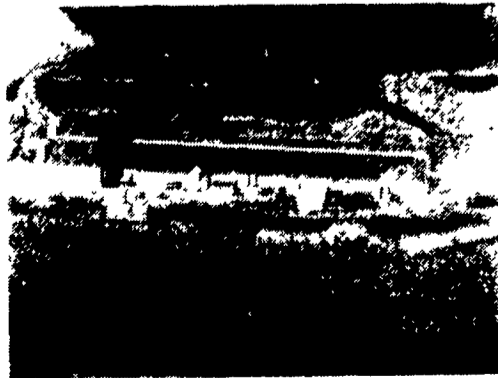
PENNFIELD GROWER OPPORTUNITIES



We have an immediate need for several swine finishing facilities.

We are maximizing returns for our current growers by using single source feeder pigs, maintaining buildings at 100% efficiency and offering competitive contracts.

If you have an existing facility or would like to build a new facility, please contact our Swine Division at 717-295-8783 or 1-800-732-0467.



PENNFIELD CORPORATION

711 Rohrerstown Rd., P.O. Box 4366, Lancaster, PA 17604

- AN EQUAL OPPORTUNITY EMPLOYER -