

National Grain Summary

Wednesday, September 23, 1987 - WHEAT MARKETS MIXED, 2 CENTS LOWER AT KANSAS CITY AND MINNEAPOLIS, STEADY TO UP 1 CENT AT PORTLAND AND THE ST. LOUIS MARKET FELL 3 TO 15 CENTS PER BUSHEL. YELLOW CORN RANGED 1/2 TO 1 CENT LOWER AT MOST MARKETS BUT THE KANSAS CITY MARKET CLOSED STEADY TO UP 1 CENT PER BUSHEL. SOYBEAN MARKETS MIXED, DOWN 3 CENTS AT KANSAS CITY, UP 2 CENTS AT ILLINOIS PROCESSORS AND AT MINNEAPOLIS AND UNCHANGED AT SOUTHERN IOWA BARGE LOADING POINTS. CHICAGO OCTOBER SOOY-EAN MEAL FUTURES MARKET ADVANCED \$3.70 PER TON AND OCTOBER SOYBEAN OIL ROSE 6 POINTS. PAKISTAN BOUGHT 26,000 TONS OF U.S. SOYBEAN OIL. DATE CHANGE YEAR AGO 9/23/87 9/22/87 9/24/86 WHEAT: KANSAS CITY 2.71-2.74 - 2 2.48-2.54 MINNEA-

POLIS 3.01 3/4 - 2 2.83 1/4 PORTLAND 2.99-3.01 UNCH + 12.68-2.71 ST. LOUIS 2.56-2.72 - 3 - 15 2.48-2.51 CORN, U.S. NO. 2 YELLOW: KANSAS CITY 1.58-1.62 UNCH + 1 1.53-1.58 MINNEAPOLIS 1.48 1/2 - 1 1/4 1.44 3/4 SO. IOWA 1.52-1.55 - 1/2 - 1 1.47-1.50 OMAHA 1.49-1.51 - 1 1.45-1.46 SOYBEANS, NO. 1 YELLOW: KANSAS CITY 5.09-5.27 - 3 4.64-4.74 MINNEAPOLIS 5.10 + 2 4.86 1/4 SO. IOWA 5.14-5.17 UNCH 4.72-4.92 C. ILL PROCESSORS 5.26-5.34 + 2 4 92 1/2-4 99 1/2

*KANSAS CITY, U.S. NO. 1 HARD RED WINTER WHEAT, ORDINARY MINNEAPOLIS, U.S. NO. 1 DARK NORTHERN SPRING WHEAT, 14% PROTEIN; PORTLAND NO. 2 SOFT WHITE WHEAT; AND ST. LOUIS, NO. 2 SOFT RED WINTER WHEAT.

GRAIN FUTURES CLOSE: KANSAS CITY (DEC) WHEAT 2.87 1/2 - 2 3/4 2.48 1/2. MINNEAPOLIS (DEC) WHEAT 2.80 3/4 - 2 2.58 1/4. CHICAGO (DEC) WHEAT 2.92 1/2 - 4 1/4 2.61. (DEC) CORN 1.76-1.72 3/4

(NOV) SOYBEANS 5.29 + 2 4.84 1/4. EXPORT: BARGE OR RAIL, GULF DELIVERY. NO. 1 HARD RED WINTER WHEAT ORDINARY PROTEIN 3.01 1/2 - 2 3/4 NO. 2 SOFT RED WINTER WHEAT 2.99-3.00 - 3 - 4 NO. 2 YELLOW CORN 1.82-1.87 UNCH + 1 NO. 2 YELLOW SORGHUM 3.07-3.11 UNCH - 2 NO. 2 YELLOW SOYBEANS 5.52-5.55 + 1.

Regional Hay

September 21, 1987 Eastern, Pa. On-Farm Sales

HAY & STRAW MARKET FOR EASTERN PA. (ALL HAY NO. 2 AND BETTER PRICES PAID BY DEALERS AT THE FARM AND PER TON.) HAY STEADY TO STRONG; STRAW STEADY. MOVEMENT SLOW IN SOME AREAS. ALFALFA 80.00-110.00; MIXED HAY 60.00-90.00; TIMOTHY 70.00-90.00; STRAW 50.00-75.00; MULCH 20.00-35.00.

LANCASTER CO. AUCTIONS

SUMMARY OF LANCASTER CO. HAY AUCTIONS FOR WEEK ENDING

9/18/87. PRICES PER TON: LOADS: 101 HAY, 54 STRAW, AND 60 EAR CORN. ALFALFA 89.00-130.00; MIXED HAY 76.00-125.00; TIMOTHY 79.00-129.00; STRAW 85.00-117.00; EAR CORN 60.00-75.00

CENTRAL PA. HAY AUCTIONS

SUMMARY OF CENTRAL PA HAY AUCTIONS FOR WEEK ENDING 9/18/87. PRICES PER TON: LOADS: 60 HAY, 5 STRAW AND 31 EAR CORN. ALFALFA 85.00-130.00; MIXED HAY 60.00-105.00; STRAW 60.00-92.50; EAR CORN 50.00-80.00.

Good's Hay

Leola, Pa. Wed., Sept. 23, 1987

Report Supplied by Auction 86 LOADS ALFALFA, 81.00-167.50; MIXED HAY, 63.00-150.00; TIMOTHY, 91.00-139.00; STRAW, 80.00-116.00; CORN, 57.00-70.00; GRASS, 84.00-97.00; RYE, 3.40 BU.; OATS, 1.75 AND 2.50 BU.

Westminster Hay

Westminster, Md. Tuesday, Sept. 22, 1987

Report Supplied by Auction 7 LOADS. ALFALFA, DARK, 79.00, 2.00 BALE; TIMOTHY, 2.20 BALE; TIMOTHY AND ORCHARD GRASS, 85.00; GRASS, 48.00; WOOD, 61.00 CORD.

Buffalo Valley Produce Hay and Straw

Mifflinburg R3 Thursday, Sept. 24

Report Supplied by Auction 6 LOADS. 4 LOADS CORN, 50.00-70.00; TIMOTHY, 75.00; STRAW, FAIR, 45.00. SALE HELD EVERY THURSDAY.

Dewart Hay

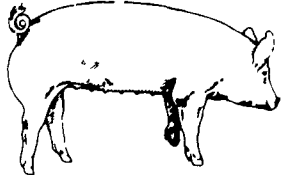
Dewart, PA.

Monday, Sept. 21, 1987 Report Supplied by Auction 3 LOADS HAY, 77.00-81.00; 3 LOADS STRAW, 59.00-90.00; 3 LOADS CORN, 61.00-66.00.

Valley Livestock

Athens, Pa.

Monday, Sept. 21, 1987 Report supplied by auction HOLSTEIN HFR. CALVES TO 116.00 VEAL CALVES TO 99.00. VEALER BULL CALVES TO 118.00. SLAUGHTER CALVES 70.00-80.00. GRASSERS & FEEDERS 40.00-60.00 LAMBS 55.00-77.00. SHEEP 20.00-35.00. HOGS, 200 TO 250 50.00-55.50. SOWS 35.00-37.00. BOARS 32.00-36.00. PIGS, EACH 25.00-38.00. HEIFERS 42.00-48.50. STEERS 45.00-61.50. STEERS, FEEDER 50.00-75.00. BULLS 50.00-58.00. COWS, UTILITY 45.00-48.00, TOP 51.75. COWS, FAT 45.00-48.00. COWS, MEDIUM 44.00-46.00. COWS, POOR OR SMALL 32.00-41.00. CATTLE MARKET HIGHER. CALF MARKET STEADY. PONIES, EACH TO 80.00. GOATS, EACH 25.00-57.50. REMARKS: REAL ACTIVE MARKET. FEEDER SALE 1ST MONDAY OF EACH MONTH DAIRY SALE 3RD THURSDAY OF EACH MONTH



EMERY'S BUYING STATION

OPEN TO RECEIVE YOUR MARKET HOGS

AT THE GREEN DRAGON MARKET RD 4, EPHRATA, PA 17522 1 MILE NORTH OF EPHRATA ON NORTH STATE STREET.

HOURS: MONDAY, TUESDAY, and WEDNESDAY 7:00 A.M. to 11:30 A.M. 215-458-5677 Residence 717-733-9648 Office

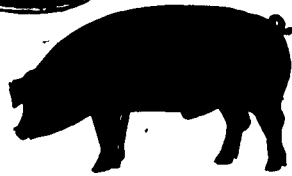
215-458-5677 Residence 717-733-9648 Office

YOU ARE PAID FOR YOUR HOGS IMMEDIATELY

Ken & Lois Emery, Proprietors



GWALTNEY of SMITHFIELD, LTD.



RECEIVING HOGS:

LANCASTER COUNTY FARMERS

MONDAYS: McCoy's Branch Office, Bareville WEDNESDAYS: (Next to Bawells Butcher Shop) & FRIDAYS: on Butler Rd. 717-656-9668

TUESDAYS: B & R Cattle

THURSDAYS: Marietta 717-426-3258

YORK COUNTY FARMERS

MONDAYS: Stewartstown 717-993-2564

TUESDAYS: Thomasville 717-792-2248 or 9836

Contact for information:

Ed Herrmann, 717-284-3203 or Charlie Kauffman, 215-593-5674 Future forward contracts available

MELHORN SALES, SERVICE, TRUCKING CO.

1010 W. Main St., Mount Joy, PA 17552

Why You Should Consider Melhorn Sales, Service and Trucking Co.

| Feature | Benefits |
|---|--|
| * 28 years of DEKALB sales & service experience | Providing you with a reliable source of a proven performer, committed to making it work in your layer house. |
| * 12 years of trucking experience | Providing you with a professional and caring approach to moving your pullets, protecting your investment. |
| * 25 years pullet growing experience - Custom growing - Started pullets | Providing you with a quality grown pullet raised on a proven program that insures top performance in your layer house |
| * 2 full time sales & service people | Providing you with information & technical help for maximum performance. |
| * 2 full time pullet service people | Insures that pullet growing program is followed resulting in birds that perform. |
| * 6 full time office staff | To handle your business needs fast, courteous & efficiently. |
| * Full time, professional pullet moving crews | Capable of moving and housing 80,000 pullets per day. Fast, efficient, & courteous service insures the least amount of stress on your birds. |
| * 20 years experience in the loading of spent hens | Utilizing fowl carts for fast, efficient handling of your spent hens |

The only full service company, in this area, to handle the total needs of the poultrymen.

For More Information Phone: 717-653-1102

Monday - Friday 8:30 AM - 4:00 PM



GRAIN & LIVESTOCK HEDGING SERVICES WITH E F Hutton

Jim Rohrbaugh, Account Executive E F Hutton & Company Inc P O Box 3151, Harrisburg, PA 17105 (717) 763-1611 (800) 822-9553 In-state (800) 334-3119 Out-of-state



SADDLE UP!

To Better Equipment... Find It In Lancaster Farming's CLASSIFIEDS!

Like to get a full 5-year warranty on your next running gear?

Then ask for Unverferth. That's right, our precisely built, road-ready, 8- and 10-ton wagon running gears come with a full, 5-year warranty and much more. For example:

To give you years of safe, worry-free service, we incorporate features like all-welded construction with extra bracing, pivot point grease fittings, and renewable bushings in the steering and front spindles.

And, to help keep those years of service safe, we use a specially aligned frame for smooth, straight trailing and 180° tongue swivel and innovative low-profile design for added maneuverability and unmatched stability...even on hillsides.

For more about reliable, safe Unverferth running gears or our full line of high quality grain boxes, see your dealer today. Or call us toll-free:

1-800-322-6301



Unverferth Mfg Co. Inc PO Box 357 Kahda OH 45853 1 800 322 6301

