

1975 Ford 350 camper special, very good mechanical condition, needs cosmetic work. 717-993-3405.

1976 International 1600 w/14' wood cattle body, 4 and 2 speed, 21,000 GVW, good condition, \$3900. 717-437-2721.

1977 GMC tandem axle flat bed, 44,000 GVW, 427 V8, 5 spd trans., 16' steel flat bed, \$8,950. 717-397-5154. 7-4:30 p.m.

1947 Fire Truck, 700 gallon pump & 500 gallon tank, both excellent condition 717-653-5663

1967 C50 Chevy truck w/13' Omaha standard grain body, good shape 215-285-6246 before 8AM or after 6PM.

1968 Ford N1000, SA truck tractor w/220 Cummins engine, \$900 or best offer 201-359-5934 evenings.

1969 Diamond Reo tractor, 238 Detroit, good condition, 20 ft dump trailer. Call 717-530-1773

1973 Mack, R686 5-speed Wetline Jake, 11-R225, 1980 Mack, R686 5-speed, Wetline, AC, 11R22.5, Parker 26'-60" Dump, sealed gate, heated, 11-R22 5 Parker 30'-32'-60" dump, sealed gate, bows, 11-R24.5 215-827-7105 or 215-458-8260.

1974 Jeep Wagoneer, 4WD, 350 automatic, 74,000 original miles, good shape \$675 717-665-3860.

1975 Ford F-700, 16' reefer body, new V-8, 5 speed, 2 speed rear All new brakes New TK unit. Best offer, 804-224-9171.

Country Oldsmobile, Inc.

YOUR 4x4 HEADQUARTERS

For PICKUPS & VANS!

Also... Dependable Used Cars!!

Your Olds Connection Dealer in Gilbertsville, PA

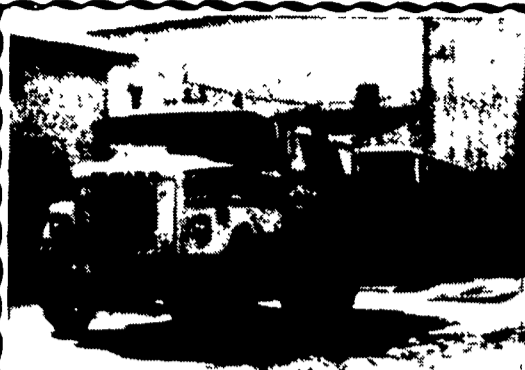
COUNTRY Oldsmobile

COUNTRY Oldsmobile

1-800-362-7655

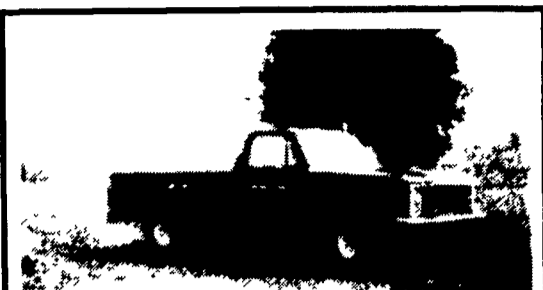
Route 663 & Swamp Pike Gilbertsville, PA

(215) 327-3000



'78 WHITE LIME TRUCK
13 Foot Box, 350 Cummins With Jake Brake, 9 Speed, With Auger Trailer. In Good Condition. \$20,000 or Best Offer

717-354-7907



1983 CHEVY C-10
6 Cyl. 3 spd, P.S., AM-FM, Sliding Rear Window, Black Withr Wagon Wheels, Excellent Condition.

\$3,995.00

Cumberland County, Shippensburg, Pa.

Phone 717-532-7887



Over 400 New and Used Trucks In Stock For Immediate Delivery

1978 Ford F-700



V8, 5 Spd., 2 Spd. Rear, 27,000 GVW, 16 Ft. Steel Platform Body, 10x20 Tires Stock #7922-A
Was \$7,995 Now \$6,995

1984 Ford F150



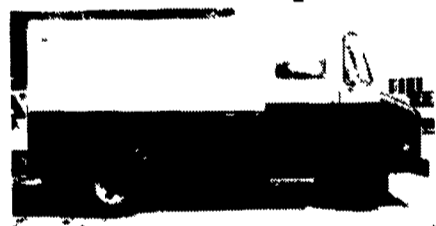
4 Spd. Manual, 6 Cyl., PS, PB, Clean Truck Stock #7875A
Was \$6,995 NOW \$6,495

1985 Chev Hi-Cube



1 Ton, V8, AT, 14 Ft. Alum. Body Stock #71137A
Was \$9,995 NOW \$9,295

1979 Chev Step Van



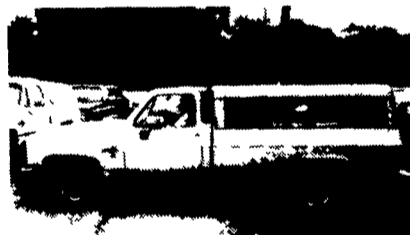
10 Ft. Steel Body, V8, AT, 7503A
Was \$4,995 Now \$3,995

1985 Chev K20



Heavy Duty Silverado, V8, AT, 6274A
Was \$11,995 NOW \$10,995

1986 Chev C-10



Diesel, 8 Ft. Fleetside Silverado, Air, AT, Cap, Loaded, 17,000 Miles. Stock #9392
Was \$11,995 NOW \$11,495

New 1987 Chev Dump



1 Ton V8, 4 Spd., w/8 Ft. Dump Body Stock No. 7337

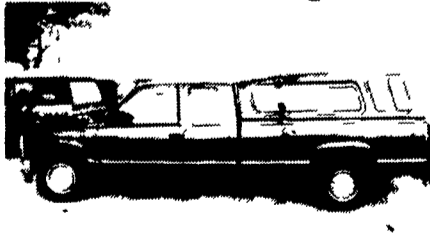
EL CAMINO



1987 Is the last year for this All American Truck

4 In Stock

1988 Pickups



Over 125 In Stock Starting As Low As

\$9,795

NOBODY BUT NOBODY UNDERSELLS...

LARRY MURPHY CHEVROLET (TRUCK CENTER)

1 Mile South of Park City, Old Harrisburg Pike, Lancaster, PA

717-397-0601

717-397-0601

YES!! ENGLE FORD DOES MAKE IT EASIER!!

Over 100 New & Used Trucks, Vans & 4x4's

- 87 Ford F250 Super Cab Diesel, Fully Equipped, Brand New, Only 1 Left
- (2) 86 Ford F150 Pickup V8, AOD, PS, PB, AC, XLT, Loaded, 1 Owner
- 85 Ford Ranger XLT Pickup V6 5 spd, PS, PB, 2 Tone, Real Sharp
- 85 Ford F350 Club Wagon, 15 Passenger, L&R, Air
- 85 Jeep CJ7 XLT 6 Cyl, 1 Spd, PS, PB, Town & Country, only 25,000 miles
- 83 Subaru Brat Auto Transmission & Air
- 83 Chev Beauville Van with Air
- 79 Ford LN 7000 Diesel 5 Spd, 2 Spd. Axle, Cube Body, Heavy Hauler
- 78 Ford LN8000, Cab & Chassis, 3208 D&L 5 Spd, 2 Spd. Axle, Low Miles

ENGLE FORD, INC.

Rt. 147 North Millersburg, PA 17061

In PA The Call's On Us 1-800-242-8075
Out of State Call 1-717-692-4841

Used Trucks & Equipment

- Totem-all 6 ton Tagalong Trailer
- 1973 Jersey 9 ton Tagalong Trailer
- 100 CFM Schram Compressor
- 125 CMF I-R Compressor
- 1750 CFM I-R Compressor (Reconditioned) mounted on Fruehauf 30 Ton Low-Bed (Package)
- Superior Generator w/Pump
- Superior Generator
- Case Skid-Steer Loader w/forks attachment

- 1978 R-Model Mack 300 Maxidyne 6 speed low gear
- 1985 National N-85 Crane
- (2) 40' Flat Beds with 4000 lb. Hydraulic Lift Gates
- 1987 Mack CS250P - 18 Ft. Stake and Lift Gate
- 1986 Mack CS250P - 18 Ft. Stake and Lift Gate
- 1985 Chev 1 Ton Stake - 12' Bed, Elec. Lift Gate, 48,000 Miles
- 1985 Chev 1 Ton Stake - 30,000 Miles, 12' Bed, Elec. Lift Gate



COOK EQUIPMENT CORPORATION

T/A Eastern States Utility Supply Co.
RD 6, Box 628-A
Allentown, Pennsylvania 18106

(215) 33-0405