

HAY MARKETS



Pa. Grain

Monday, August 31, 1987

Report supplied by PDA
COMPARED WITH LAST MONDAY'S MARKET FOR SOUTHEASTERN, CENTRAL AND SOUTH CENTRAL PA.: CORN UNEVENLY STEADY; WHEAT STEADY TO .05 HIGHER; BARLEY STEADY TO STRONG; OATS STEADY TO .10 HIGHER; SOYBEANS STEADY TO .20 LOWER; EAR CORN STEADY TO WEAK

SOUTHEASTERN PENNSYLVANIA

CORN NO. 2-Y RANGE 1.70-1.91, AVERAGE 1.82; *CONTRACT FOR HARVEST 1.60-1.84; @WHEAT NO. 2 RANGE 2.40-2.81, AVERAGE 2.65; BARLEY NO. 3 RANGE 1.20-1.45, AVERAGE 1.31; OATS NO. 2 RANGE 1.10-1.50, FEW REPORTED 1.80, AVERAGE 1.39; SOYBEANS NO. 1 RANGE 5.00-5.50, AVERAGE 5.25; *CONTRACT FOR HARVEST 4.70-4.93; *GR. SORGHUM #2 RANGE 1.60, AVERAGE 1.60; *CONTRACT FOR HARVEST 1.60; *+BUCKWHEAT *CONTRACT FOR HARVEST 7.75, EAR CORN RANGE 47.00-61.00, AVERAGE 54.00.

CENTRAL PENNSYLVANIA

CORN NO. 2-Y RANGE 1.70-1.90, AVERAGE 1.78; @WHEAT NO. 2 RANGE 2.30-2.65, AVERAGE 2.47; BARLEY NO. 3 RANGE 1.20-1.30, AVERAGE 1.25; OATS NO. 2 RANGE

1.00-1.45, AVERAGE 1.19; SOYBEANS NO. 1 RANGE 5.50-5.60, AVERAGE 5.53, EAR CORN RANGE 50.00-53.00, AVERAGE 50.50.

SOUTH CENTRAL PENNSYLVANIA

CORN NO. 2-Y RANGE 1.80-1.95, AVERAGE 1.87; @WHEAT NO. 2 2.25-2.50, AVERAGE 2.34; BARLEY NO. 3 RANGE 1.20-1.45, AVERAGE 1.34; OATS NO. 2 RANGE 1.20-1.55, AVERAGE 1.32; EAR CORN RANGE 50.00-62.00, AVERAGE 57.56.

WESTERN PENNSYLVANIA

CORN NO. 2-Y RANGE 1.55-2.00, AVERAGE 1.77; @WHEAT NO. 2 RANGE 2.30-2.65, AVERAGE 2.44; OATS NO. 2 RANGE 1.15-1.55, FEW REPORTED 1.00, AVERAGE 1.28; EAR CORN RANGE 45.00-50.00, AVERAGE 48.33.

SOUTHEASTERN, CENTRAL & SOUTH CENTRAL SUMMARY

CORN NO. 2-Y RANGE 1.70-1.91, AVERAGE 1.81; @WHEAT NO. 2-Y RANGE 2.30-2.77, AVERAGE 2.51; BARLEY NO. 3 RANGE 1.20-1.45, AVERAGE 1.32; OATS NO. 2 RANGE 1.00-1.50, AVERAGE 1.29; SOYBEANS NO. 1 RANGE 5.00-5.60, AVERAGE 5.37, EAR CORN RANGE 47.00-62.00, AVERAGE 54.13.

MONTH AGO

CORN NO. 2-Y RANGE 1.89; @WHEAT NO. 2-Y RANGE 2.44, BARLEY NO.

3 RANGE 1.29; OATS NO. 2 RANGE 1.12, SOYBEANS NO. 1 RANGE 5.47, EAR CORN RANGE 55.66

YEAR AGO

CORN NO. 2-Y AVERAGE 1.98, @WHEAT NO. 2-Y AVERAGE 2.43, BARLEY NO. 3 AVERAGE 1.31; OATS NO. 2 AVERAGE .94; SOYBEANS NO. 1 AVERAGE 4.56, EAR CORN AVERAGE 56.72

Regional Hay

August 31, 1987
Eastern, Pa.

On-Farm Sales

HAY & STRAW MARKET FOR EASTERN PA (ALL HAY NO. 2 AND BETTER PRICES PAID BY DEALERS AT THE FARM AND PER TON.) HAY & STRAW SLOW, STEADY TO STRONG.

ALFALFA 75.00-90.00, FEW 110.00, MIXED HAY 60.00-90.00; TIMOTHY 60.00-90.00; STRAW 45.00-75.00, MULCH 30.00-35.00.

LANCASTER CO. AUCTIONS

SUMMARY OF LANCASTER CO. HAY AUCTIONS FOR WEEK ENDING 8/28/87. PRICES PER TON: LOADS: 105 HAY, 39 STRAW, AND 74 EAR CORN. ALFALFA 88.00-130.00; MIXED HAY 66.00-120.00; TIMOTHY 67.00-127.00; STRAW 67.00-100.00; EAR CORN 52.00-70.00.

CENTRAL PA. HAY AUCTIONS
SUMMARY OF CENTRAL PA. HAY AUCTIONS FOR WEEK ENDING

8/28/87. PRICES PER TON: LOADS: 61 HAY, 12 STRAW AND 26 EAR CORN. ALFALFA 80.00-115.00; MIXED HAY 55.00-122.00; STRAW 45.00-72.50; EAR CORN 55.00-73.00.

New Holland Hay

New Holland, PA
Monday, August 31

Report Supplied by Auction

115 LOADS.
ALFALFA, 72.00-155.00; MIXED HAY, 80.00-135.00, TIMOTHY, 65.00-117.00; ORCHARD GRASS 92.00-75.00; STRAW, 75.00-102.00; EAR CORN 55.00-72.00; RYE 3.75 BU.; 7.00 BAG; OATS 1.85-2.40 BU.; SOYBEANS 8.50 BAG; TIMOTHY FEED 37.50 BAG

Dewart Hay

Dewart, PA.

Monday, Aug. 31, 1987

Report Supplied by Auction

2 LOADS HAY, 80.00-86.00 PER TON; 3 LOADS STRAW, 51.00-70.00; 3 LOADS CORN, 60.00-63.00 PER TON; LOAD WOOD 46.00

Belleville Hay

Wednesday, Sept. 2
Belleville, PA

Report Supplied by Auction

14 LOAD ALFALFA 55.00-120.00; MIXED 40.00-87.50; 4 LOADS STRAW 57.50-80.00; 6 LOADS EAR CORN 50.00-62.50.

Leinbach's Hay

Shippensburg, PA
Aug. 29 & Sept. 1

Report supplied by Auction

37 LOADS.
ALFALFA, 121.00-150.00; MIXED HAY, 66.00-125.00; TIMOTHY, 75.00-98.00; GRASS, 54.00-76.00; STRAW, 60.00-65.00, EAR CORN, 68.00-83.00; OATS, 1.45 BU.; MULCH HAY 40.00-52.00

Green Dragon Hay

Ephrata, Pa.

Friday, Aug. 28, 1987

Report Supplied by Auction

67 LOADS.
ALFALFA 90-114; TIMOTHY 87-140, MIXED 70-120; ORCHARD GRASS 78; CORN 48-63; STRAW 71-100; OATS 1.70-1.90, RYE 3.10-3.30, WOOD \$40 LOAD

Good's Hay

Leola, Pa.

Wed., Sept. 2, 1987

Report Supplied by Auction

72 LOADS.
ALFALFA, 81.00-164.00; MIXED HAY, 79.00-131.00; TIMOTHY, 67.00-129.00; STRAW, 75.00-100.00; CORN, 51.00-70.00; CORN 51.00-70.00; RYE 2.85-3.40 BU.; OATS 1.65 BU.

LIVESTOCK HAULING

Dependable Service

6 Possum Bottom Tractors
and Trailers
Call Anytime

Vintage Sales Stables, Inc.

L. Robert Frame Manager

Office 717-442-4181

Office & Home: 215-458-5060

Office & Home: 215-458-8518

Seeking Profits In Commodities Trading?

- Hedging
- Speculating
- Managed Account
- Commodity Options

Call Forney Longenecker,
Commodities Investment Executive,
At (717) 295-8914

SHEARSON
LEHMAN BROTHERS
29 E. King St.
Lancaster, PA 17603

SHEARSON
LEHMAN
BROTHERS

An American Express Company
AMERICAN EXPRESS

HERE TO STAY!

MAKE 1987 THE YEAR TO GET ACQUAINTED WITH NEW HOLLAND SALES STABLES, INC. - THE ACTION AUCTION

MONDAY

FAT HOGS

EARLY BIRD HOG SALE

7:30 AM
For Your Protection Your Hogs Must Be Identified

10:00 AM

HORSES MULES

11:00 AM



HAY
STRAW
GRAIN



1:30 PM
BEEF SALE
CALF, SHEEP,
GOATS

WEDNESDAY

11:00 A.M.

COWS

HEIFERS, BULLS

NEW HOLLAND SALES STABLES, Inc.

12 Miles East of Lancaster
on Route 23, New Holland, Penna

The Action Auction
717-354-4341

Mgr - Abe Diffenbach - 717-393-4464
Norman Kolb - 717-397-5538

Field Representatives
Alan Diffenbach 717-656-9806
Luke Eberly 215-267-6608 - 738-1865

WEDNESDAY - 1:30 P.M.
FEEDER PIG SALE



We endeavor to keep our barns cleaner than yours. State graded until 12 Noon

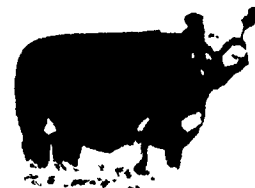
THURSDAY

10:00 AM

BULLS -

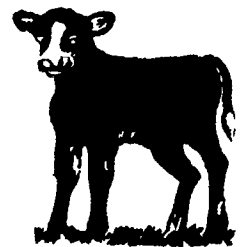


STEERS -
BEEF COWS

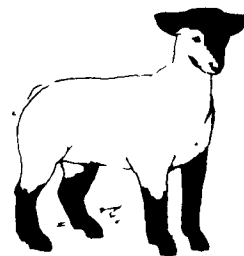


2:30 P.M.

CALVES



SHEEP
GOATS



Market your livestock thru New Holland Sales, your neighbor does
Pick-up your check before you leave