

PUBLIC AUCTION

SEPTEMBER 24, 1987
10:30 A.M.

2 Buildings sell, new Oct. 1986; Complete milking set up, new 1986, sells, 52 head Guernseys, Butler barn cleaner; Farm Machinery - 2 in. SS pipe line.

Located in Ocean Co., N.J. 25 miles East Trenton along Rt. 528.

CATTLE

52 head Guernseys - 47 head Registered.

BUILDINGS - STALLS

110x38 ft. 1 story all new dairy farm, insulated, baked enamel siding and roof, 40 comfort stalls and water bowls, 2 box stalls, sell separate, 40x60 pole barn, all new 86, 48 cow mats, gutter grates.

**MILKING EQUIPMENT
ALL NEW 1986**

600 gal. Mojonier milk tank, tank washer, 2 inch stainless steel milk line, 3 inch vacuum line complete with receiving jar, Electrobrain washer, 3 inch jar, sells as a unit, Alert Surge units sell separate, Surge Alamo 1200 vacuum pump with 5hp motor, 5hp Lehig Blue cold compressor with motor only piece bought used, switches all sell separate, large cut off switch for generator hook up.

Butler barn cleaner complete with unit section chain, XR16 Semen tank, International 856 Diesel tractor, Hay feeder wagon, flat bed wagon.

Watch for detailed ad
on cattle later.

OWNERS:
**TENPENNEY DAIRY
VINCE - KELLEY BLASCO**

Auct.:
Steve
Steve Jr. **Petersheim**
AU 001349-L

**FARM AND HOUSEHOLD SALE
THURS., SEPT. 10, 1987
11 A.M.**

On Route 49, 3 mi. East of Knoxville, Pa., 3 mi. West of Osceola, Tloga Co.

Selling mach. and equip. inc. 3000 Ford gas tractor, JD 420 tractor, 2 NH Model 15 wagons w/kicker racks, NH Model 256 rake, NH 469 haybine, NH 310 baler w/thrower, 5 ft. Hi-Co 3 pt. rotary mower, 3pt. blade, blade for JD 420, IH 401 3 section drag, flat bed trailer, Dunham Lehr 13 ft. transport cultipacker, utility trailer, shovel plow, quantity of new pine lumber, 2-8s, 2-6s, 2-4s, and boards, chicken crate, wooden bathtub, MF 2 row, 3 pt. corn planter, JD 60 H blower, electric fencers, corn sheller, 2 sets tractor chains, 501, 3 pt. Ford mower, 2 water tanks, snow fence, doors, windows, air compressor, milk cans, cream separators, log chains, grain augers, cast iron hog troughs, forks, shovels, gas cans, grind stone, 40 ft. wood ext. ladder, 2 bottom, 3 pt. Ford plows, 3 bottom, 3 pt. Ford plows, fence posts, barb wire, steel posts, feed carts, cattle vac, straps, halters, wood wheel barrow, shop vac, barn fogger, cow clippers, Skelton elevator, 20 ft. al. ext. ladder, etc.

Household items inc. gas range, ref., chest freezer, space heater, step ladders, crocks, diningroom table w/6 chairs, buffet, 4 wardrobes, dish washer, odd chairs, studio couch, pole lights and lamps, paint, fire-glo wood stove, gun racks, deer head, oil lamps, bookcase and books, stands, dressing tables, desk, meat grinder, trunk, picture frames, sewing machine, old high chair.

ALICE (TILLIE) BIESER,
Owner

Sale by Beards, Knoxville, Pa.
Lic. AU-000051-L

Terms, cash or good check w/proper ID.
Sale held in tent. Lunch available.

PS. This machinery is in A-1 shape and ready to go, we all know how Pat took care of his machinery. So we will see you the 10th.

**PUBLIC
AUCTION**

**2 LARGE
BRICK BUILDINGS
62,500 SQ. FT. OF BUILDING
THURSDAY, OCTOBER 1, 1987
At 1:30 P.M.**

LOCATED: Center Street and Railroad Street, Mt. Wolf, PA.

2 Large Brick Buildings on 3 Acres of Land in Mt. Wolf Borough, York County, PA.

Building #1: 4 floors w/ bathroom on each floor, heated by gas and oil hot water modines, zoned heat, loading docks, air supplied to each floor, adjacent to P.R.R., paneled office area on ground level, elevator for all 4 floors.

Building #2: 3 floors, heated by gas modines, loading area.

These buildings are of brick structure with wooden beams and are in very good condition. They have been used as a furniture factory, but were previously used for a sewing factory. They are connected to Mt. Wolf sewage and York City water and gas. The buildings have a sprinkler system and the roof on both is in very good condition. Buried 3,000 gallon fuel tank, 800 amp electric service, 220 and 110 current, phone system w/ intercom and paging system and a security system.

FOR INSPECTION,

PHONE 266-6110 or 764-6412

TERMS: 10% DOWN, BALANCE IN 60 DAYS
OWNER:

MRS. PAULINE BERNSTEIN

AUCTIONEER:

Blaine N. Rentzel
Emigsville, PA
PA Lic. #761
(717) 764-6412

SAT SEPT 12 - 9AM Personal Property, HH, Antiques 701 Hoffman Rd, Spring Garden Twp., York, PA Charlotte & Meredith Neiman, Owners Brian L & Jacob A Gilbert, Aucts

SAT SEPT 12 - 9AM Machine Shop Eq, Guns, Car, etc Paul Peiffer Estate, Mt Aetna Fire Hall, Mt Aetna, PA Clayton C Kleinfelter Sr & Sons, Aucts

SAT. SEPT 12 - 9AM L&G Equipment, Tools, Shop items 22 Plum Street, Rt 3, Palmyra, Leb Co, PA From Rt 422 in Palmyra, turn N onto Forge St and continue 2 mis to 90° turn Go straight onto Sportsman Rd towards Palmyra Sportsman Club and turn right onto Plum St to site For. J Donald Wolfe Harry H. Bachman, Auct.

SAT. SEPT. 12 - 9AM Plumbing Eq & Supplies 219 N Cleveland Ave., Hagerstown, MD. Philip DeBlase, Owner. Stull, Dietrich, Custer, Aucts.

SAT SEPT 12 - 9AM HH, Hyd Loader 1/4 mi W of "The Buck" on Rt 372 First road right, first driveway right 15 mis S. of Lancaster on 272 Estate of Naomi S Wenger J Everett Kreider, Auct.

SAT. SEPT 12 - 9AM Cranes, Concrete Eq, Trailers, Power Eq Located on Pauls Lane, off MD Rt. 7, 1/2 mi. south of MD Rt 152, Harford Co., Joppa, MD By Arthur D Ford William H Amoss, Auctioneer.

SAT. SEPT. 12 - 9:30AM Real Estate, Antiques, HH. 427 S 10th St., Akron, Lanc. Co., PA. Paul H Stamm & Janetta P Stamm Estate. T. Glenn & Timothy G. Horst, Aucts.

SAT. SEPT. 12 - 9:30AM United Telephone & Bell Telephone, Carlisle, PA Vilsmeier Auct. Co., Inc.

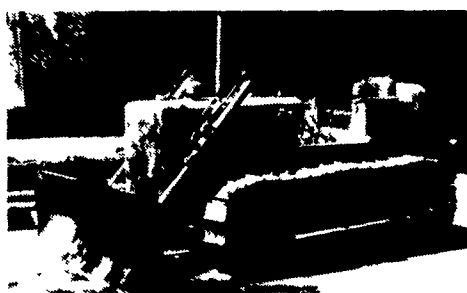
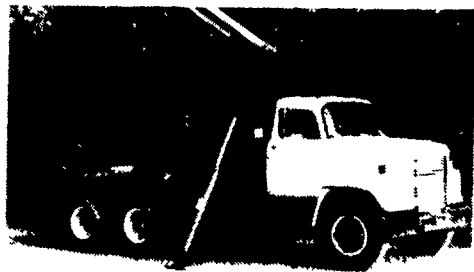
87C072

ABSOLUTE AUCTION**WALTER ADAMOW**

Lost Lease/Must Move — 90% Liquidation

SAT., SEPT. 12 - 10:00 A.M.

PHILADELPHIA, PA.



CAT 955H Crawler Loader; **Cat** 955 Crawler Loader; (2) **Case** 310 Crawler Loader; (2) **Cat** D4D Crawler Tractors; (2) **Cat** D4 Crawler Tractors; **A-C** HD11 Crawler Tractor; **Ford** 4500 Rubber Tired Tractor Loader; **Case** 1816 Skid Steer Loader; **IHC** E211 Elevating Scraper; **Miller** MS708A Rubber Tired Paving Box; **General** 2 ton Tandem Roller; **General** 1 ton Roller; **Gallon** 5-8 ton Tandem Roller; **Huber** 3-5 ton Static Tandem Roller; **Gallon** 10 ton, 3 Wheel Roller; (2) **Northwest** 25 Crawler Crane/Backhoes; (2) **Northwest** Backhoe Attach.; **Northwest** 40' Bolt Together Angle Boom; **Note:** The Northwest Boom & Backhoe Attach. will be sold separately from units; **Loralin** TL20, 10 ton Conv. Truck Crane; **Prentice** 8 ton Hyd. Crane; (3) Wrecking Balls; **Owen** 1 yd. Clamshell Bucket w/teeth; **Owen** 7/8 yd. Round Nose Clamshell Bucket w/teeth; (4) Concrete Buckets; 1975 **Diamond** REO S/A Dump Truck; 1969 **Chev.** C30 S/A Dump Truck; 1971 **Ford** F500 S/A Dump/Stake Truck; 1968 **Ford** F600 S/A Dump Truck; 1972 **Ford** F700 4x4 Flatbed Truck; 1969 **Ford** F8000 T/A Flatbed Truck; 1966 **Mack** B61S T/A Cab & Chassis; 1966 **Mack** B60S T/A Cab & Chassis; 1970 **Ford** F950 S/A Cab & Chassis; 1969 **Ford** T/A Vactor Truck; 1959 **Mack** B60S T/A Concrete

Mixer Truck; 1974 **IHC** Fleetstar 2010A T/A Truck Tractor; 1970 **IHC** Fleetstar 2000 S/A Truck Tractor; **Gindy** 45' T/A Storage Trailer; **Strick** 40' T/A Storage Trailer; (2) **Strick** 35' T/A Storage Trailers; **Gindy** 35' T/A Storage Trailer; **Fruehauf** 20' S/A Storage Trailer; 10'x30' T/A Office Trailer; 8'x30' T/A Office Trailer; **Shopmade** S/A 1 ton Tagalong Trailer; 1970 **Ford** F350 Stake Truck; **Ford** F100 Pickup; **Chev.** 3800 Pickup; 1973 **Ford** F350 Service Truck; (6) Air Compressors, Large Quantity of Contractors Tools & Shop Equipment, and Landscaping Equipment. The Sale is located at Adamow's leased property at 1400 Rhawn St. in Philadelphia, PA.

EVERYTHING SELLS AS-IS WHERE-IS TO THE HIGHEST BIDDER REGARDLESS OF PRICE

TERMS: COMPLETE PAYMENT SALE DAY IN CASH OR GUARANTEED FUNDS ONLY.

Vilsmeier Auction Co., Inc., PA Auctioneer License No.: AY-000958-L
Sale Site Manager: Dan Irwin
Sale Site Phone: (215) 742-3224

For More Info., Contact:

VILSMEIER AUCTION CO., INC.

ROUTE 309, MONTGOMERYVILLE, PA 18936

(215) 699-5833