

MON SEPT 7-9AM Annual Labor Day Consignment Auction The Auction Barn, American Corner, MD, on Hwy 621, between Denton & Federalsburg, MD A Curtis Andrew Auct, Inc

772 in Byerstown Jonas & Lovina Lapp, Owners Steve & Steve Jr Peter-sheim, Aucts

Related Items For Jacob Moyer At Alderfer Auction Center, 501 Fairgrounds Rd, Hatfield, PA 2 mis from Lansdale Exit of PA Tpk NE Ext Sanford Alder-fer Auct Co.

TUES SEPT 8-6PM Car-nages, Sleighs, Tack, Pri-mitive Farm Eq, Horse

MON SEPT 7 - 9:30AM Tractors, 100 Industrial Eq Trucks, Combines, Field Eq, etc Hale's Equipment Inc, 3099 Hart Rd, Leba-non, Ohio

MON SEPT 7 - 9:30AM Antiques, Collectibles Brckerville Fire Hall, just off Rt 322 in Village of Brcker-ville, Lanc Co, PA Mr & Mrs Alfred Strauch E M Murry Assoc

MON SEPT 7 - 10AM Annual Labor Day Auction of Homemade Quilts, New & Used Items Benefit Penn-York Christian Camp on Rt 49, Ulysses, Potter Co, PA Pirrung Aucts

MON SEPT 7 - 12 Noon 118 Acre Farm M/L Union Twp., Tioga Co N Rt 14 to Rt 414, go W. 5 mis, turn left to Y Stay right to farm Sanford G Leaman, CAI Auct

TUES SEPT. 8 - 21 Acre Farm 512 Newswanger Rd., Ephrata Twp., Lanc Co., PA. Rt. 322 E of Ephrata, turn at Hinkletown Light, 2nd road left. Terms by: Titus N. & Mary L Weaver, T. Glenn & Timothy G. Horst, Aucts.

TUES. SEPT. 8 - 10AM HH, Antiques, Farm Machinery, Sheep, Mules Lanc Co., PA 4 mis. S of Intercourse, 2 mis. N of Gap along Rt

2-DAY PUBLIC AUCTION CLASSIC CARS & FORD PARTS & RESTAURANT, INDUSTRIAL & GARAGE EQUIP. THUNDERBIRDS - MUSTANGS - LINCOLN CONT. + FOREIGN CARS

Located off Rt. 61 in Pottsville, Pa. Schuylkill Co. Turn off at Toddle House Restaurant on Mill Creek Ave. to corner of Nichols St.

"SALE SIGNS POSTED"

FRI., SEPT. 25, 1987

10:00 A.M.

Restaurant & Industrial Equip. + Misc.

SAT., SEPT. 26, 1987

9:00 A.M.

Classic Cars - Parts - Garage Equip.

Approx. 25 Classic cars & 15 parts cars + parts Nos. mostly Mustang + equip. from former 30 yr. old Ford Dealership (send for list).

PREVIEW THURS., SEPT. 24, 1987 1 to 6 PM

Lge. Ad. on Sept. 19

Sold for:

SEITZINGER BROS.

Pottsville, Pa.

Eugene G. Klinger Auct. Service

R.D. 3 Box 3290

Hamburg, Pa. 19526 Pa. 2138-L

Phone 215-562-4286 Eve. after 8

Joe Kinn Pa. 492-L

TUES SEPT 8 - 7:30PM Stratton Farm Dairy Equip Auction 7913 Mitchellville Rd, Bath, NY James Strat-ton, Owner Pirrung Aucts, Inc

struction Consignment Auction

SAT SEPT 9 - 9AM Farm Eq, Hay, Shop Tools, Butcher Eq Cumberland Co, PA Along Rt 233 approx 6 mis N of Newvil-le, PA Sale by Elam

Bucher Melvin Senseng, Auct

mis E of Knoxville, PA, 3 mis W of Osceola, Tioga Co Alice Bieser, Owner Sale by Beards

THURS SEPT 10 - 11AM Machinery & Eq Rt 49, 3

PUBLIC AUCTION 46 ACRE FARM SAT., SEPT. 12, 1987 At 10 AM

From Honey Brook go north on Rt. 10 to first cross road turn right onto Todd Road go approx. 1 mile to Welsh Road turn left go approx. 1/2 mile to Davis Road turn right to property. Honey Brook Twp. Chester County.

LAND: 46 acres more or less. Tillable acreage is about 25 acres, the meadowland is approx. 5 acres and has a nice spring fed farm pond and approx. 16 acres of woodland. This is a nice secluded area with all open fields surrounded by woodland. The terrain is level to gentle slope.

HOUSE: 2 1/2 story stone house with full basement, asphalt roof, First floor has kitchen & dining area, living room and enclosed porch. The second floor has 2 bedrooms & full bath also hallway. The attic is used for storage. Oil fired hot air heat. A beautiful evergreen grove and garden area.

GARAGE: 24'x30' three bay garage, block with stucco and asphalt roof.

BARN: Frame & stone bank barn, lower part is open stable, upper part used for hay straw & equipment storage. There is also a 10'x12' storage shed.

This property is well kept, secluded, and approx. 4 mile from the Turnpike entrance at Morgantown.

Inspection anytime by appointment, for further information call or write Elton Horning Farm Agency, Box 264, Morgantown, Pa. 19543, Tel. - 215-286-0135.

10% down day of sale, final settlement within 60 days.

Terms by:

RALPH H. BEAVERS

David G. Campbell, Atty

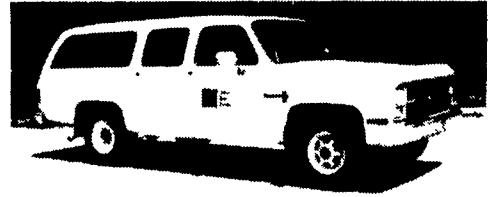
Auctioneer: Elton Horning

AU000434L

ABSOLUTE AUCTION

UNITED TELEPHONE & BELL TELEPHONE

SAT., SEPT. 12 - 9:30 A.M. CARLISLE, PA



(18) '83 - '81 Chev. Chevettes, 4 cyl., 4 spd.; (12) '82 - '80 Chev. Citations, 6 cyl., auto., w/a/c; (2) '80 - '79 Chev. Malibus, 6 cyl., auto.; (5) '80-'79 Ford Fairmonts, 6 cyl., auto.; '84 Chev. C20 Suburban, 6.2 litre dsl., auto., w/a/c, AM/FM, cruise, p/w, p/l; '82 Chev. C20 Pickup, 8 cyl., 4 spd.; (9) '82 Chev. S10 Pickups, 6 cyl., 4 spd., w/service caps; (10) '81 - '80 Chev. Luv Pickups, 4 cyl., 4 spd., some w/service caps; (22) '80 - '77 Chev. Display Vans, 8 & 6 cyl., auto. & 3 spd.; (4) Pitman Hyd. Digger Der-ricks; (14) Telsta, Versalift, & UEC Bucket Trucks; (2) '85 - '84 Chev. Hi Cube Vans; (2) '79 Ford Cab & Chassis; (20) '79 - '77 Chev. Cab & Chassis.

EVERYTHING SELLS AS-IS WHERE-IS TO THE HIGHEST BIDDER.

At United Telephone's facility at 1430 Trindle Rd. in Carlisle, PA. TERMS: COMPLETE PAY-MENT SALE DAY IN CASH OR GUARANTEED ONLY WITH \$200 CASH REQUIRED AFTER FIRST ITEM PURCHASED AND \$100 CASH REQUIRED AFTER EACH ITEM PURCHASED THEREAFTER.

Vilsmeler Auction Co. PA Auctioneer Lic. No.: AY-000958-L For More Info., Call (215) 699-5833, Vilsmeler Auction Co., Inc., Rt. 309, Montgomeryville, PA 18936. (87U057)

PUBLIC AUCTION



GEORGE HAIN ESTATE AUCTION

MODERN FARM EQUIPMENT; SKID LOADER; TRUCK HOUSEHOLD GOODS & ANTIQUES
Fri., Sept. 18, 1987 at 10:00 A.M.

Between Hamburg & Reading turn West off Rt. 61 onto Belleman's Church Road for .7 mile, turn at Wagonsellers Kountry Inn to Farm, Berks Co., Pa.

FARM EQUIPMENT: Int. 584 utility diesel w/3 pt., 38" rubber & 775 hrs.; Int. 450 w/FH & TA, 3000 hrs.; Int. 240 w/fh & 1880 hrs.; MC 33 ft. end loader for 300 Farmall; culti for 240 tractor; Int. #540 semi mtd 4-14" trip pl w/hill side hitch; Int. #46-9" transport finishing disk; Chattanooga 10' transport roller harrow; 9' & 10' single roll cultipackers; 7' drag disc; 4 sec harrow; Int. #56 four r c planter; Century 300 gal. poly tank weed sprayer; 120 gal. weed sprayer w/Meyers pump; MC 16 single disc grain drill; Int. 990 mower conditioner; Int. FH 7' mower; Int. rake; NH 268 bal-er w/thrower; 3 bale side wagons; Farmec 30' bale elev.; NI #319 Snapper w/322' husker, only did 300 acres. COMBINE: Int. #205 s p w/13' grain head; 34'-6" transport auger; Cardinal 12' alum. elev.; 22' alum. elev.; 3-180 bu. grain gravity wagons; NH #36 flail chopper; NH #327 PTO man-ure spreader; SKID LOADER: Int. 3200 series A hydro w/54" manure fork & 2 buckets; MC 60" chopper; Onan 12,000 KW port PTO gen.; Corson fh post hole digger; Ezee AVCO 3 pt. spinner spreader; fh rear blade; Little Giant drag elev.; one row riding cultivator; (2) 300 gal. skid fuel tank w/pumps; CT hy pressure washer; CT 20 ton hyd. jack; Eccho SRR-200 string weed cutter; 1/2" & 3/4" socket sets & tools; (2) rd. 4600 bu. cap wire type c cribs; 1/2" drill press; work bench; 500 lb. platform scale; baler twine; lot of second hand lumber; RIDING MOWER: Wheel Horse GT-1100, 8 spd. w/42" deck; 28' alum. ext. ladder; 32' wdn. ext. ladder; rubber tire wheel barrow; 200 bales straw & 500 bales hay, 2 yrs. old. TRUCK: 1978 Ford Custom 150 w/28,515 original miles.

HOUSEHOLD GOODS & ANTIQUES: Hotpoint refrig.; chest freezer; Hotpoint auto. washer; counter top appliances; formica breakfast set; LR furniture; kneehole desk w/leather inlay; 3 & 4 pc. Maple BRS; cedar blanket chest; gateleg dropleaf table; Sheraton 4 drawer chest w/inlay work; dovetailed blanket chest; sq. Oak ext. table; 8 day weighted wall clock; Oak side board base; old barroom chr.; asstd. plank seat chrs.; candle stands; 2 Oak slat back rockers; Walnut frame mirror; Gulbransen spinet piano; treadle sew machine; sm. pot belly stove; umbrella stand; wicker baskets; redware bowl; 2 Flow Blue plates; brass kettle; service for 6 silverplate flatware; plus other household items.

SALE ORDER: 10 A.M. Household goods & Antiques; 11 A.M. Small farm tools; approx. 12:30 Farm equip.

Terms: Cash or Acceptable Check.

Refreshments Available

Ordered by:

LOUISE M. FOLLET & HELEN M. MILLER, EXECUTORS

Atty. Edwin Kershner

P.O. Box 215 • Fogelsville PA 18051 • 215-395-8084 • License #AU001809-L

RALPH W. ZETTEMAYER AUCTION CO. INC

ABSOLUTE LIQUIDATION

NURSERY STOCK- EQUIPMENT- SUPPLIES- OFFICE EQUIPMENT QUITTING BUSINESS

BOMBERGER BROS. NURSERIES INC.
LEOLA, PENNSYLVANIA 17540 - TEL: 717-656-2291

TUESDAY MORNING, SEPTEMBER 15 AT 8:30 A.M. SHARP AND WEDNESDAY, SEPTEMBER 16 AT 8:30 A.M. IF NEEDED

Call before coming second day. No machinery or supplies sold before 12:00 noon of first day, Tues., Sept. 15th. Be on time.

Located on Rt 23 between Lancaster and New Holland, Penna in Leola, PA Upper Leacock Twp, Lancaster County

Stock includes large quantity of specimen shades and shrubs. Container Stock. TERMS: Machinery, supplies, containers, etc payable day of auction FIELD STOCK: Under \$1000.00 payable in full 50% or \$1000.00 whichever greater REMOVAL: On or before January 1, 1988 DIGGING HOURS: 7:00 a m till 5:00 p m No Sunday Digging MOTEL: Sunset Valley Motel on Rt 23, 2 miles west of auction 717-656-2091

TRUCKS, TRACTORS, CRAWLER, SPADES, TRAILERS, ETC.

ALL MACHINERY HOUSED INDOORS AND IN EXCELLENT CONDITION

SEVEN TRUCKS: 1986 Ford F350 one ton dump, 12,000 miles, like new 1986 Ford F-150 1/4 ton truck, new 1984 Ford Bronco II 4x4 w/western all angle snow blade 1983 Ford Ranger 4x4 w/western angle snow blade 1979 G M C #6000 dump truck, GVW 19,200 w/37,000 mi., excellent 1969 International #1600 Dump truck, 21,000 GVW, 72,000 miles, good 1973 Dodge 600 Dump truck, GVW 26,000, 66,000 miles, above average

THREE TRACTORS: All diesel

John Deere 300-B diesel tractor w/wide front end, loader, 800 hr., 3 PH, industrial rated, like new, all power, roll bar w/roof John Deere 302-A diesel tractor wide front end, loader bucket, 3 PH, 2400 hrs., industrial rated, like new, all power, roll bar w/roof David+Brown diesel tractor, all power, 3 PH, hi low range, nice Case #450 Crawler w/front end loader w/quick hook up T-44 Vemeer spade, T-44 Vemeer spade, tri axle Low Boy trailer, ele brakes, beaver tail Tandem axle Low Boy trailer, ele brakes, beaver tail 1985 Mits & Merrill #M-14 chipper w/6 cylinder engine like new Brillion 6' seeder cult-mulcher, Brillion 10' transport Pulva-Mulcher, new John Deere #20 Ditch W/itch w/6' & 12' cutters, Howard 5' 3 PH rototiller, two chisel harrows 3 PH, Little David 16 HP stump grinder, Aro #84 lawn mulcner & seeder just new w/gas engine, Howard 22' rototiller w/gas engine, one row 3 PH seedling planter, Ryan sod cutter 12", John Deere #624 front end rototiller, Cobra portable air hammer w/gas engine all attachments, portable air compressor, 7 Bender for steel, Spinner type fertilizer 3 PH spreader, IHC 3 PH 6' disc, Crawler Ripper, 3 PH York rake, McCleary 5' lawn pulverizer 3 PH like new, Flexo harrow, two 2 & 3 wheel tree carts, Danhauser post hole digger w/12" & 18" augers, 12V seed & fertilizer spreader, Ag Tech snow plow, Western 7' angle snow blade, John Deere 2x14" plows, Hi-wheeler, 5' trailer spreader, #0-24 Stihl chain saw, Stihl #TS350 Kwick Cutter Stone Cutter like new, Homelite chain saw, Echo Weed Eater, Green Thum Weed Eater, two Torpedo space heaters, bench grinder, chain saw grinder, two Koehler portable generators 1750 watt just new, Green Root pruner w/2 blades, 4 hand pump solo sprayers, Ag Tech power rake, Flax hand pump sprayer, 3 stainless steel hand fertilizer spreaders, 3' Scott seeder, Lawn Beauty 3' seeder, 3' lime spreader, climbing ropes & saddles, bull lines, all small shop and power tools too numerous to list. Nursery spades, shovels, rakes, hoes, and small nursery related tools Spade or tree baskets, burlap, etc Rabbit box traps, 3 PH sub soiler Flag stones, bncks, mulch, and all remaining supplies

ALL OFFICE EQUIPMENT: Desks, chairs, files, New Mita 600 copier, Sentry small safe, typewriters, calculators, etc IRRIGATION EQUIPMENT: Chase irrigation pump on two wheel trailer 780' 4" aluminum pipe, Rain Bird sprinklers, irrigation timers w/solonoides and valves, six pressure tanks Heavy duty submersible pump 50 gal per minute capacity, 2 yr old with pipe Poly Hoop House 20x48', new Lath House 40x75' Pole Barn 24x80', like new

AUCTION
By **REIMOLD BROTHERS**
Phone 412/962-2853 Transfer, PA 16154
BOB REIMOLD AUCTIONEER
LIC NO PA AU 000753 L OH 57 66 1160

REIMOLD BROTHERS AUCTION SERVICE
TRANSFER, PA 16154
BOB REIMOLD, AUCTIONEER - LIC. NO. AU-000753-L
LOCAL CALL 412-962-2853
OR TOLL FREE PA 1-800-752-7853 OR
USA & OHIO 1-800-772-7853
"Nursery Auction Experts"