

# Lycoming Co. DHIA

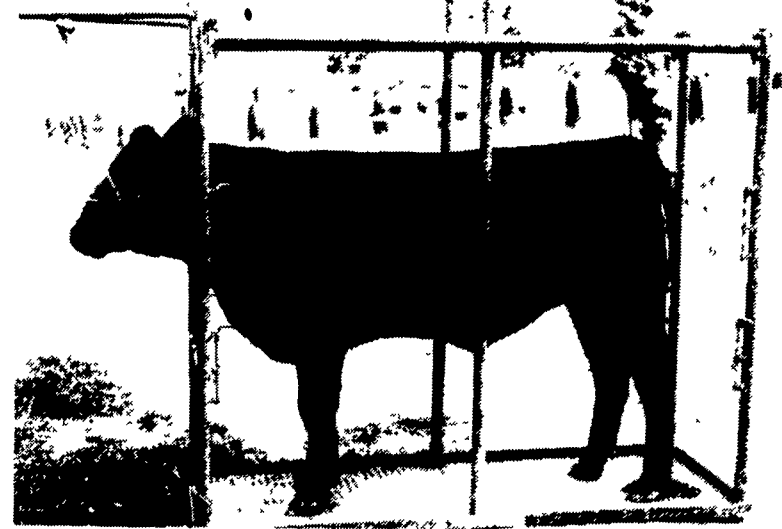
		Breed Codes					
		1-Ayrshire	4-Jersey	7-Red Dane			
		2-Guernsey	5-Brown Swiss	8-Mixed			
		3-Holstein	6-M. Shorthorn	9-Red and White			
June, 1987							
Name	Brd	No. Cows	%-Days in Milk	Milk Lbs	Fat Lbs		
Eugene W Hall	3	70.4	92.7	21,446	842		
Bar-Vista Farm	B3	44.4	91.9	22,948	812		
Charles F Ulmer Jr	B3	34.0	93.3	21,549	766		
Don & Scott Lopley	G3	39.9	89.6	20,698	719		
Vollman Dairy Farm	B3	45.7	85.1	18,795	719		
Schon-Crest Farms	B3	47.3	89.6	20,577	709		
Franklin J Finck	3	94.4	89.6	18,672	704		
Ritter Ridge Farm	3	105.1	85.9	20,669	703		
Samuel & Larry Fry	3	104.9	89.8	19,937	701		
Willard M Brelsford	B3	42.0	85.6	17,782	698		
Benjamin E McCarty	B3	47.4	87.5	18,740	697		
Marshall-Bros Inc	3	127.8	83.9	17,639	696		
Fred+Scott Lovell	B3	38.7	87.7	19,253	694		

Mars-View Farm	3	77.8	87.1	18,346	680		
Milton S Fuoss Jr	3	38.7	84.9	18,619	679		
Dale F Cooley	B3	39.7	89.4	20,563	676		
John C Bower Jr	G3	94.5	86.1	18,153	675		
Burton Y Staman	3	69.9	84.4	19,003	672		
Rodger & Owen Swartz	B3	74.8	88.4	18,669	669		
Marvin L Waltz	B3	71.0	84.9	18,162	668		
Kenneth O Bastion	B3	35.0	88.6	19,046	662		
John Snyder	3	49.9	86.8	18,034	657		
Mont Will Farms	B3	38.7	88.0	18,794	651		
The following cows completed lactations over 850 pounds of fat.							
Samuel & Larry Fry							
Lenny	3	2-3	305	16,585	4.6	776	
John Snyder							
Mandy	3	6-1	291	23,177	3.3	779	

John C Bower Jr	White22	3	3-9	305	22,239	3.9	879
Ritter-Ridge Farm	Daryl	3	5-0	305	24,584	4.8	1185
Camille	3	4-0	305	24,264	3.9	947	
Eugene W Hall	Dory	3	6-11	305	23,737	3.8	903
Marshall Bros Inc	G231	3	5-7	305	21,424	4.7	1017
Burton Y Staman	92	3	5-0	305	25,108	4.4	1129
Charles F Ulmer Jr	Barb	3	3-3	305	23,555	3.8	914
Vollman Dairy Farm	265	3	8-6	305	22,811	3.9	891
Marvin J Waltz	Lovely	3	3-1	305	25,398	3.7	945



## BLOCKING CHUTE



- For safe and easy grooming, washing and clipping cattle
- Expanded metal floor stays cleaner and gives more traction
- Assembles and disassembles quick and easy
- Can easily be moved and loaded by one person

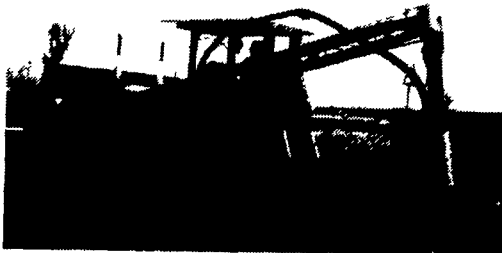
## PAUL B. ZIMMERMAN, INC.

Call or Write For Additional Information And Your Nearest Dealer

295 Woodcorner Rd  
Lititz, PA 17543  
1 Mile West of Ephrata  
Phone: 717-738-1121

## Farm Drainage & Soil Conservation... That's Us!

We Are Fully Equipped To Install Tile With Laser Beam Control



- Improved Land Use and Efficiency
- Better Soil Conservation
- Deeper Root Development
- Increased Crop Yield
- Longer Growing Seasons
- Improved Plant Quality
- Better Livestock Farming

We Specialize In Soil Conservation And Land Improvement Work



We're Equipped With: Dozers, Pans And Excavators To Handle Any Excavating Jobs, Such As Terraces, Waterways, Diversions, Ponds, Etc.



## COCALICO EQUIP. CO.

FARM DRAINAGE & EXCAVATING  
RD#4, BOX 317, DENVER, PA. 17517 PH: 215-267-3808  
717-738-3794



## EAR CORN

Paying Top Prices For Good Quality Ear Corn

- Wet or Dry
- No Quantity too large or too small
- Fast Unloading - Dump on Pile & Go
- Easy access - 2.2 miles off 283 bypass-Manheim, Mt. Joy exit
- Daily Receiving 7:30 A.M. to 5 P.M. - unloading evenings & Saturdays by appt.
- Trucks available for pick up at your farm.

Call Anytime For Price  
717-665-4785

JAMES E. NOLL GRAIN

# FLO-STAR™ claw

Bou-Matic®'s Flo-Star™ milking claw improves milk flow for:

- Better cow health
- Faster milk throughput, and
- Better milk quality.

Bou-Matic engineers designed the Flo-Star claw so milk flows smoothly and quickly out the bottom.

Less agitation equals less chance of milk "mist" carrying bacteria among teats. So the Flo-Star claw can mean less mastitis spread at milking.

Prove it to yourself by calling your Bou-Matic dealer for a free, on-farm demonstration.



## BOU-MATIC® MILKING SYSTEMS

NORTH CENTRAL  
AG AUTOMATION  
(Formerly L&W Ag)  
R.D. #2 Box 90A  
Milton, PA  
717-437-2031

JONES-DAIRY  
SERVICE  
Medford, NJ  
609-267-0198

DAIRYMEN,  
INC.  
Sykersville, MD  
301-549-2100

W and J  
DAIRY SALES  
Oxford, PA  
717-529-2569

LANCASTER  
DAIRY FARM  
AUTOMATION  
Manheim, PA  
717-665-7300

DIEM FARM  
SYSTEMS  
McAllisterville, PA  
717-463-2606

TRI-STATE  
FARM  
AUTOMATION  
Hagerstown, MD  
301-790-3698